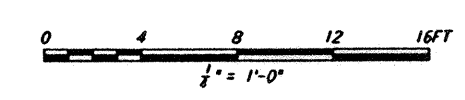
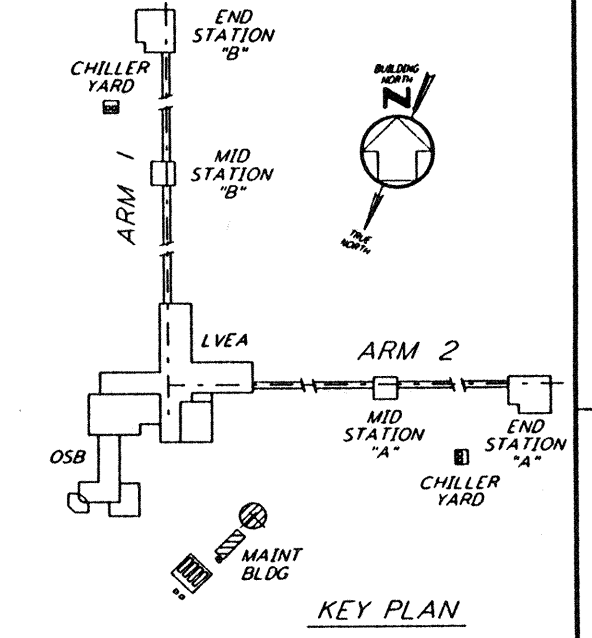
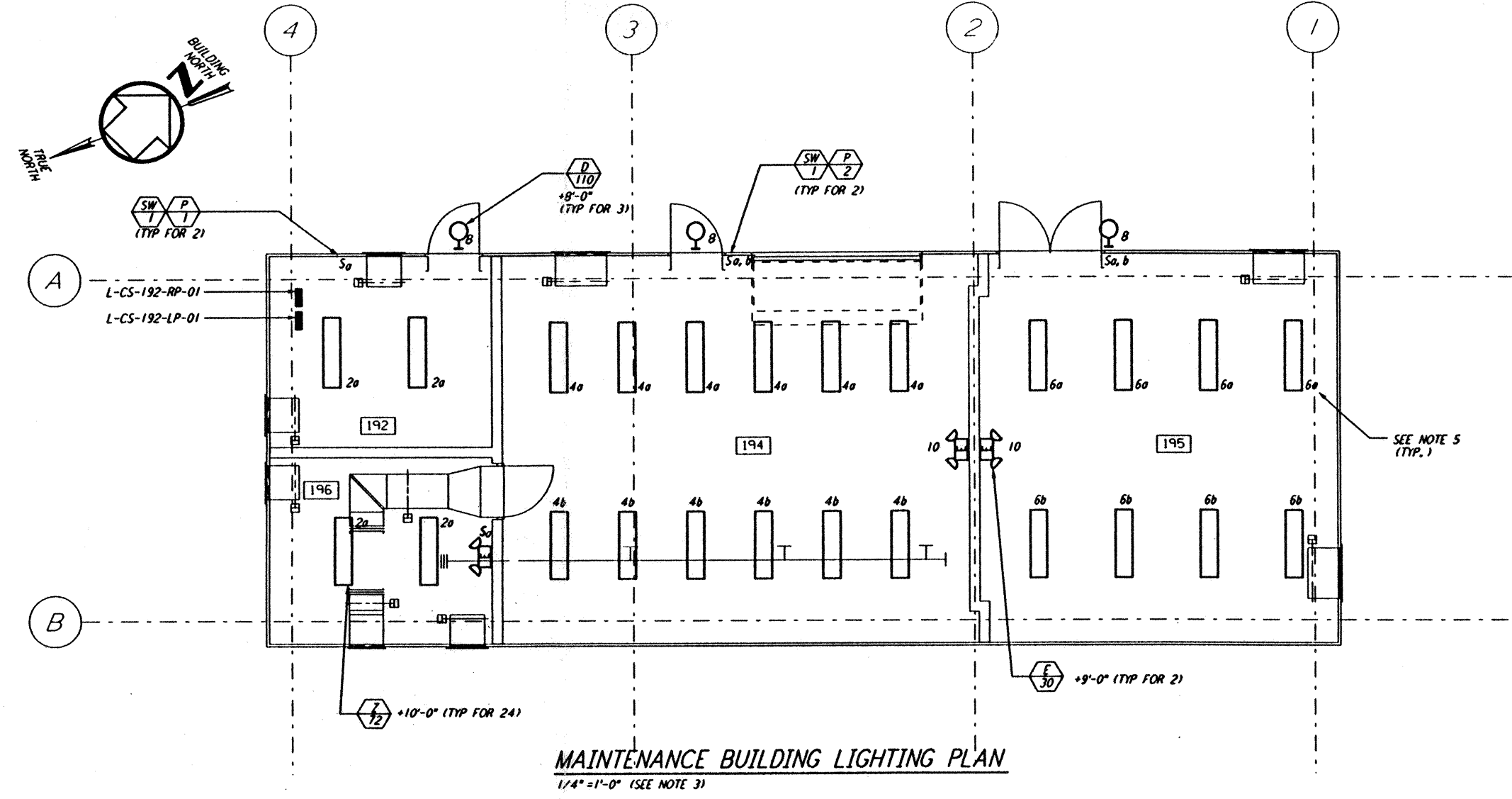


PANEL L-CS-192-RP-01		LOCATION TOP		MOUNTING SURFACE		VOLTS 200Y/120V	
FED FROM	CNT #	PHASE	WIRE	FEEDER	MAIN	BUS 100A	
L-CS-192-LP-01	1, 3, 5	3	3				
LOAD SERVED	SCT	POLES	WIRE SIZE	BKR	VOLTS	PHASE LOAD (VA)	LOAD SERVED
1 F.W. HEAT TRACE (GFCI)	1	1	20	500	500		2 SPARE
3 P.W. HEAT TRACE (GFCI)	3	1	20	200	200		4 RECEPTS RM 192, 196
5 RECEPTS OUTSIDE (GFCI)	5	1	20	720	720		6 RECEPTS RM 194
7 SPARE	7	2	20		1000		8 RECEPTS RM 194, 195
9	9	-	-	-	900		10 RECEPTS RM 195
11 SPARE	11	-	-	-	200		12 HVAC CONTROLS (CP84, CP85)
13	13	-	-	-			13
15	15	-	-	-			16
17	17	-	-	-			18
19	19	-	-	-			20
21	21	-	-	-			22
23	23	-	-	-			24
25	25	-	-	-			26
27	27	-	-	-			28
29	29	-	-	-			30
31	31	-	-	-			32
33	33	-	-	-			34
35	35	-	-	-			36
37	37	-	-	-			38
39	39	-	-	-			40
41	41	-	-	-			42
TOTAL				1500	2100	1640	
TOTAL CONNECTED LOAD (VA)				5400			
				(AMPS)			

PANEL L-CS-192-LP-01		LOCATION TOP		MOUNTING SURFACE		VOLTS 480Y/277V	
FED FROM	CNT #	PHASE	WIRE	FEEDER	MAIN	LUGS	
L-CS-192-SB-01	TBD	3	4	4#1 & #6 GND	BUS	100A	
LOAD SERVED	SCT	POLES	WIRE SIZE	BKR	VOLTS	PHASE LOAD (VA)	LOAD SERVED
1 L-CS-192-RP-01	1	3	30	15000	288		2 LIGHTING RM 192, 196
3	-	-	-	-	864		4 LIGHTING RM 194
5	-	-	-	-	576		6 LIGHTING RM 195
7 HEATER L-CS-195-HT-01	7	1	15	1500	330		8 LIGHTING OUTSIDE
9 HEATER L-CS-195-HT-02	9	1	15	1500	60		10 EMERGENCY LIGHTING
11 HEATER L-CS-196-HT-03	11	1	15	1500	1500		12 HEATER L-CS-196-HT-04
13 SPARE	13	3	15		15		14 SPARE
15	-	-	-	-	15		16 SPARE
17	-	-	-	-	15		18 SPARE
19 L-CS-194-AH-05	19	3	20	1500	500		20 SPARE
21	21	-	-	-	500		22 SPARE
23	23	-	-	-	500		24 SPARE
25	25	-	-	-			26
27	27	-	-	-			28
29	29	-	-	-			30
31	31	-	-	-			32
33	33	-	-	-			34
35	35	-	-	-			36
37	37	-	-	-			38
39	39	-	-	-			40
41	41	-	-	-			42
TOTAL				7618	7424	9076	
TOTAL CONNECTED LOAD (VA)				24618			
				(AMPS)			

- NOTES:**
- FOR GENERAL NOTES AND REFERENCE DWG SEE LA-E-103.
  - PANEL L-CS-192-RP-01 SHALL BE SQUARE D CLASS 7400 MINI-POWER-ZONE INTEGRAL 15KVA 3Ø TRANSFORMER, 12-POLE, TYPE ODB BREAKERS.
  - ALL LIGHTING CIRCUITS SHOWN ON THE LIGHTING PLAN ARE FROM PANEL L-CS-192-LP-01.
  - ALL RECEPTACLE CIRCUITS SHOWN ON THE POWER PLAN ARE FROM PANEL L-CS-192-RP-01 UNLESS OTHERWISE NOTED.
  - CIRCUITS SHOWN FEEDING THESE ITEM ARE FROM PANEL L-CS-192-LP-01.



This document and the design it covers are the property of PARSONS. They are loaned only with the borrower's expressed written agreement that they will not be reproduced, copied, loaned, exhibited, or used in any other way, except by written consent from PARSONS.

REV	NO.	DATE	BY	CHKD	ENGR	PROJ	DESCRIPTION
C	7-24-96	MM	JCL	TDW			ISSUED FOR BID
B	6-14-96	MM	JCL	KR	TDW		FINAL DESIGN REVIEW
A	10-31-95	MM	JCL	TDW			PRELIMINARY DESIGN REVIEW

DRAWN	M.M.
CHECKED	
ENGINEER	
PROJ	

**PARSONS**  
 100 WEST WALNUT STREET  
 PASADENA, CALIFORNIA

**LIGO**  
 CALIFORNIA INSTITUTE OF TECHNOLOGY  
 MASSACHUSETTS INSTITUTE OF TECHNOLOGY

LASER INTERFEROMETER  
 GRAVITATIONAL-WAVE OBSERVATORY  
 SITE NO. 2 - LIVINGSTON, LOUISIANA

ELECTRICAL  
 CORNER STATION  
 CHILLER PLANT & MAINT  
 BLDG POWER & LIGHTING PLANS

SCALE: AS SHOWN  
 CONTRACT NUMBER: PPI50969  
 PROJECT NUMBER: 8094

**LA-E-113**

Tue Jul 23 16:50:04 1996 s3-v18b2 J:\PLOTS\QUEUES\18B2\EE113.PRF