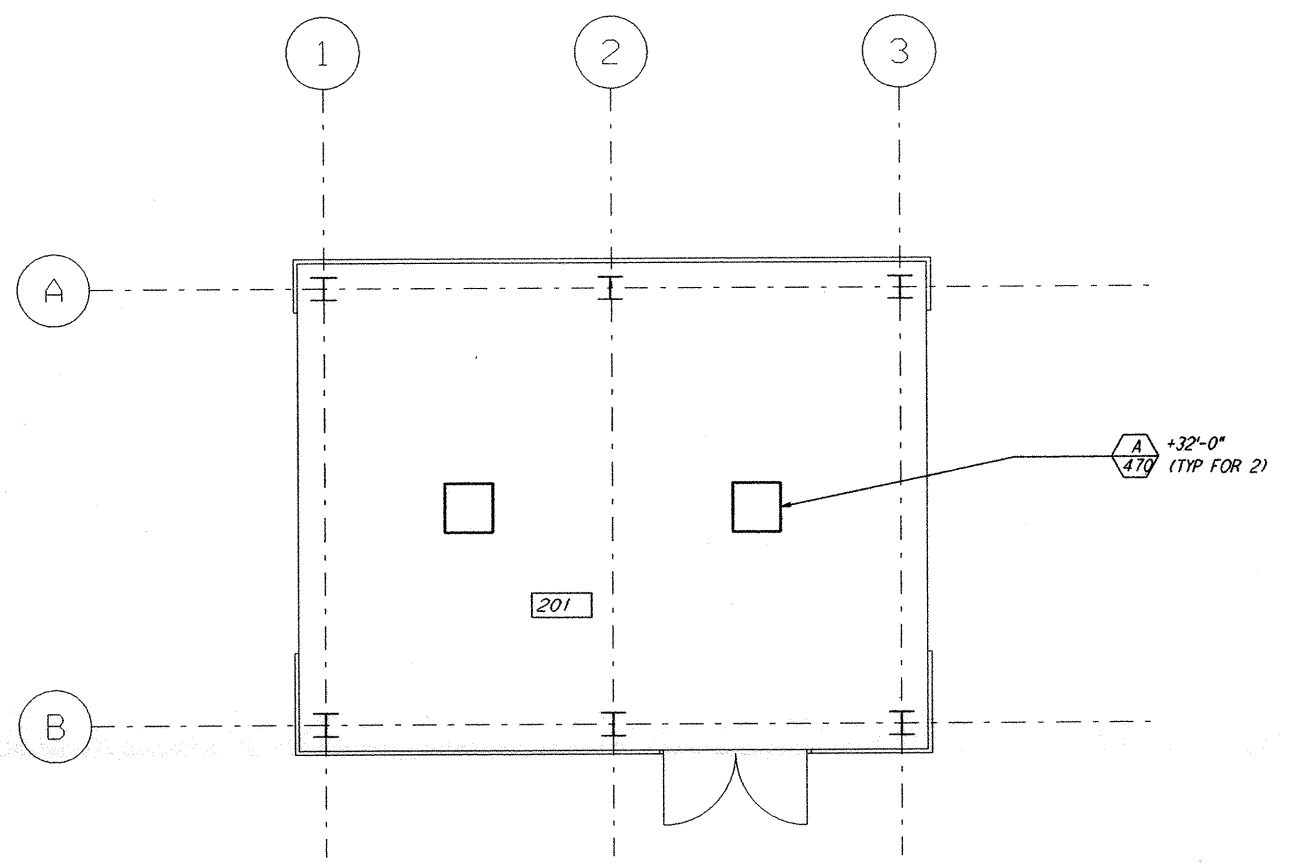
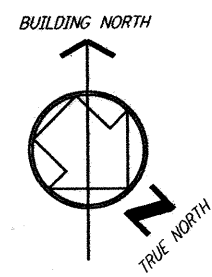
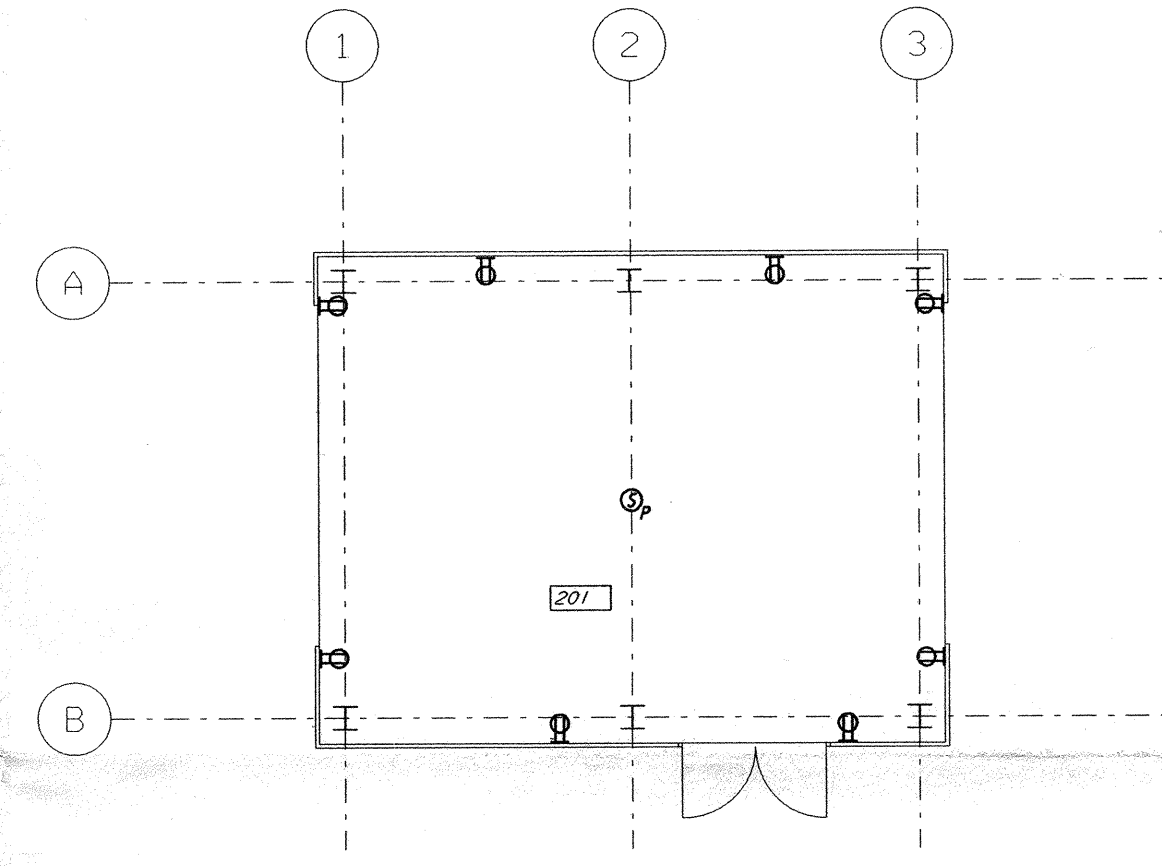


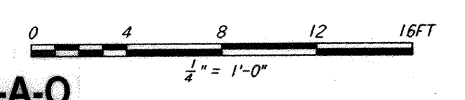
- NOTES:**
- FOR GENERAL NOTES, AND LEGEND SEE DWG. WA-E-101 & WA-E-110.
 - FOR RECEPTACLE LEGEND SEE DWG. WA-E-106.



LIGHTING PLAN



POWER, COMMUNICATIONS AND FIRE DETECTION PLAN



LIGO-D961025-A-O

NO.	DATE	APRD BY	DESCRIPTION OF REVISION
9			
8			
7			
6			
5			
4			
3			
2			
1			

NO.	DATE	APRD BY	ISSUED FOR
A	10-31-95	TDM	PRELIMINARY DESIGN REVIEW

DATE	10-31-95
DRAWN	J. G.
CHECKED	
ENGINEER	
PROJ MGR	

PARSONS
 100 WEST WALNUT STREET
 PASADENA, CALIFORNIA

LIGO
 CALIFORNIA INSTITUTE OF TECHNOLOGY
 MASSACHUSETTS INSTITUTE OF TECHNOLOGY

LASER INTERFEROMETER
 GRAVITATIONAL-WAVE OBSERVATORY
 SITE NO. 2 - LIVINGSTON, LOUISIANA

ELECTRICAL
 MID STATION POWER
 LIGHTING, FIRE DET AND
 COMMUNICATION PLAN

SCALE: AS NOTED
 CONTRACT NUMBER: PPI 50969
 PROJECT NUMBER: 8094

LA-E-201

not be reproduced, copied, loaned, exhibited, or used in any other way, except by written consent from PARSONS to the borrower.

This document and the design it covers are the property of PARSONS. They are loaned only with the borrower's expressed written agreement that they will

Mon Oct 30 23:48:54 1995 s3-v18b2 J:\PLOTS\QUEUES\18B2\EE201.PRF