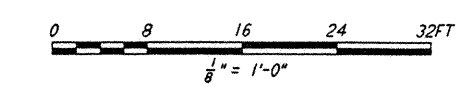
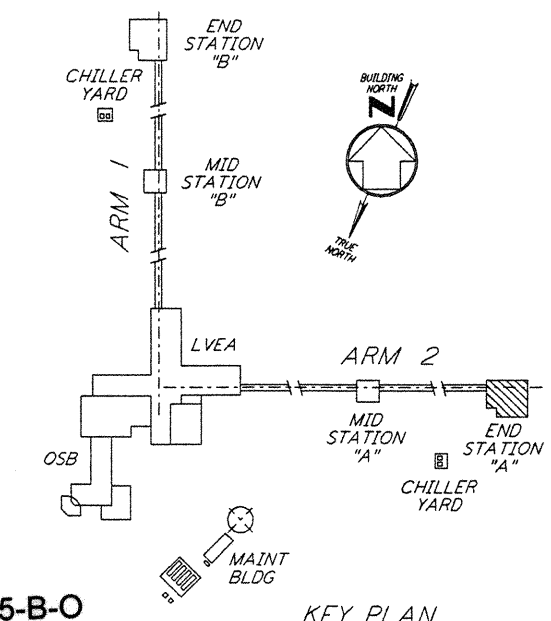
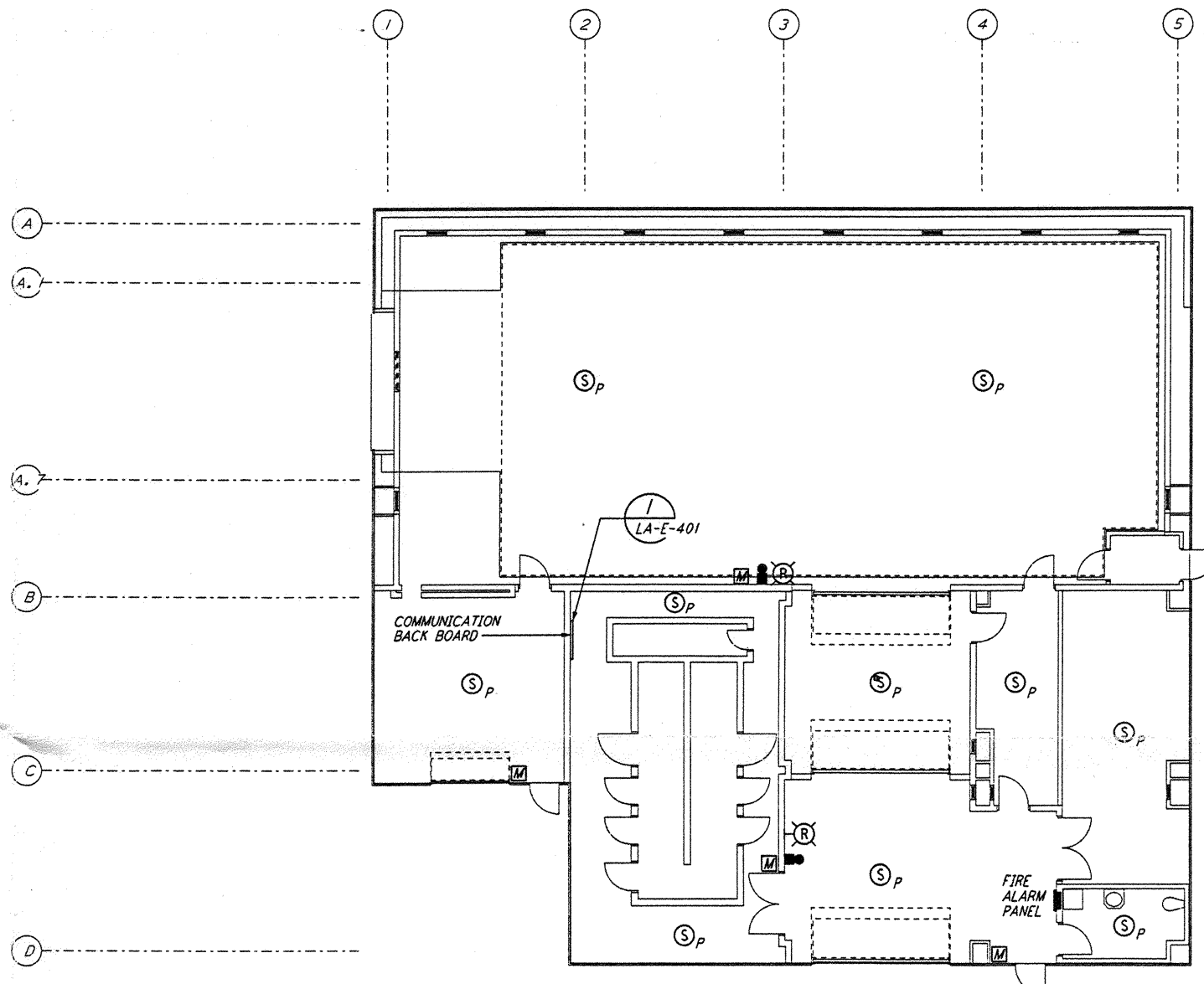
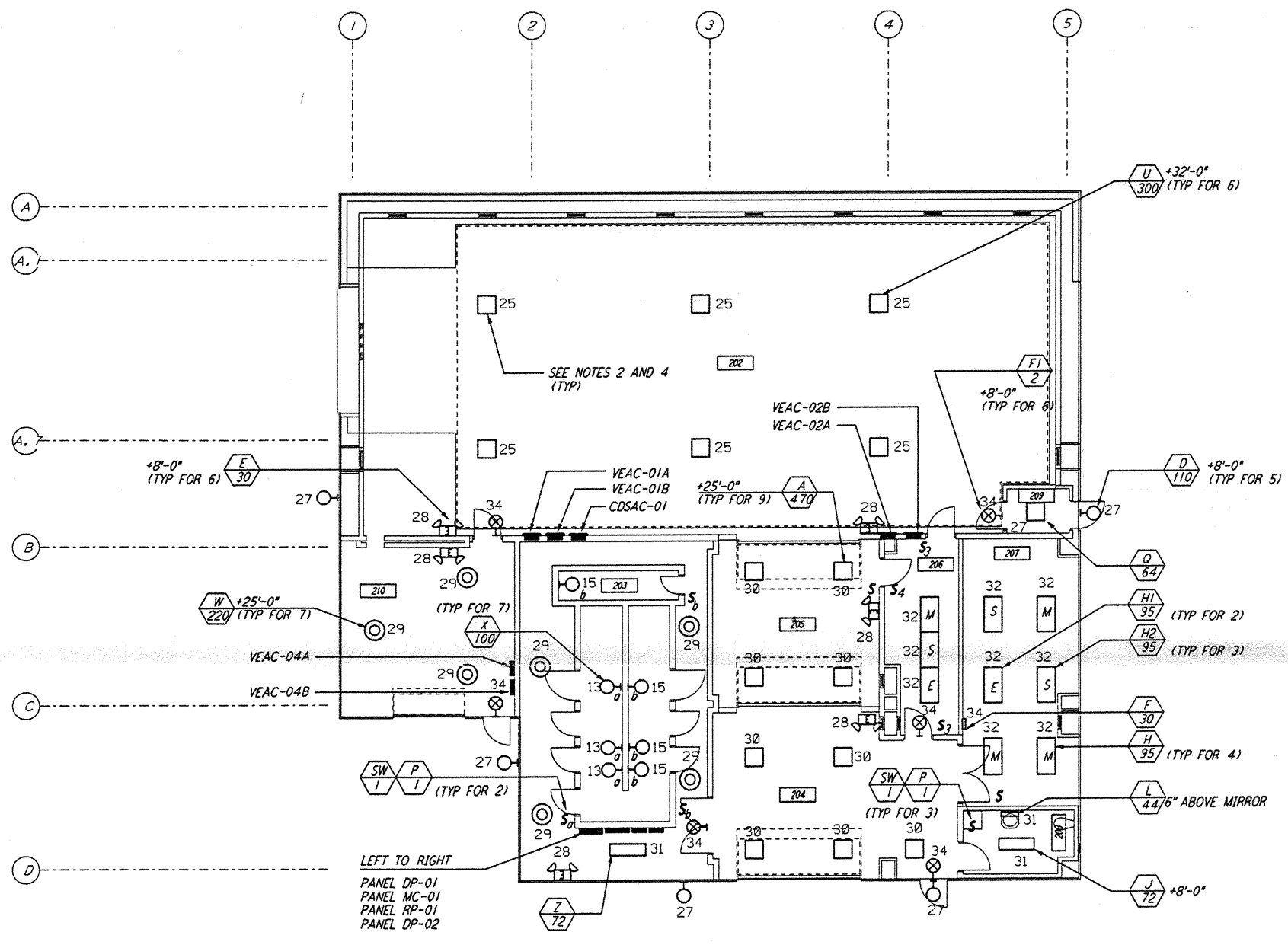


- NOTES:**
- FOR GENERAL NOTES SEE DRAWINGS LA-E-102.
  - ALL CIRCUITS SHOWN ON THIS DRAWING ARE FROM PANEL DP-02 UNLESS OTHERWISE NOTED.
  - FOR PANEL SCHEDULES SEE DRAWING LA-E-205 AND LA-E-206.
  - FOR FIXTURE LOCATION SEE ARCHITECTURAL REFLECTED CEILING PLAN ON DRAWING LA-A-221.
  - FOR FIRE DETECTION NOTES SEE DRAWING LA-E-110.
  - ALL LIGHTING CIRCUITS SHALL HAVE HOME RUN TO PANEL DP-02 EXCEPT CIRCUITS #13 & #15 SHALL HOME RUN TO PANEL RP-01.

This document and the design it covers are the property of PARSONS. They are loaned only with the borrower's expressed written agreement that they will not be reproduced, copied, loaned, exhibited, or used in any other way, except by written consent from PARSONS to the borrower.



LIGO-D961025-B-0

NO.	DATE	BY	CHKD	ENGR	PROJ	DESCRIPTION
B	6-14-96	JCL	JCL		TDM	FINAL DESIGN REVIEW
A	10-31-95	JCL	JCL		TDM	PRELIMINARY DESIGN REVIEW

DRAWN	M. M.
CHECKED	
ENGINEER	
PROJ	

**PARSONS**

100 WEST WALNUT STREET  
PASADENA, CALIFORNIA

**LIGO**

CALIFORNIA INSTITUTE OF TECHNOLOGY  
MASSACHUSETTS INSTITUTE OF TECHNOLOGY

LASER INTERFEROMETER  
GRAVITATIONAL-WAVE OBSERVATORY  
SITE NO. 2 - LIVINGSTON, LOUISIANA

**ELECTRICAL  
END STATION A  
LIGHTING, COMMUNICATIONS  
& FIRE DETECTION PLAN**

AS NOTED  
SHEET NUMBER  
**LA-E-201**

CONTRACT NUMBER  
PP150969  
PROJECT NUMBER  
8094