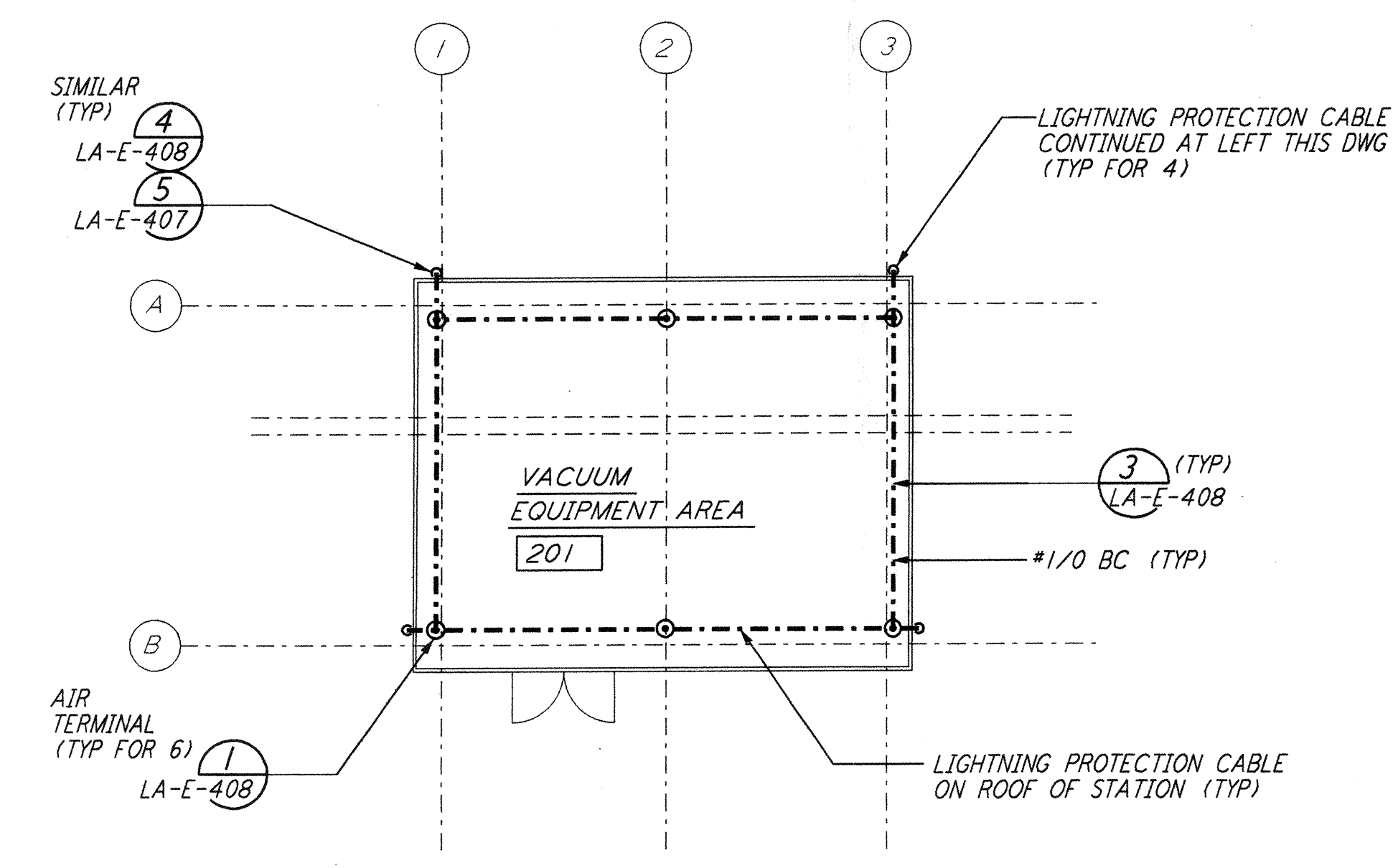
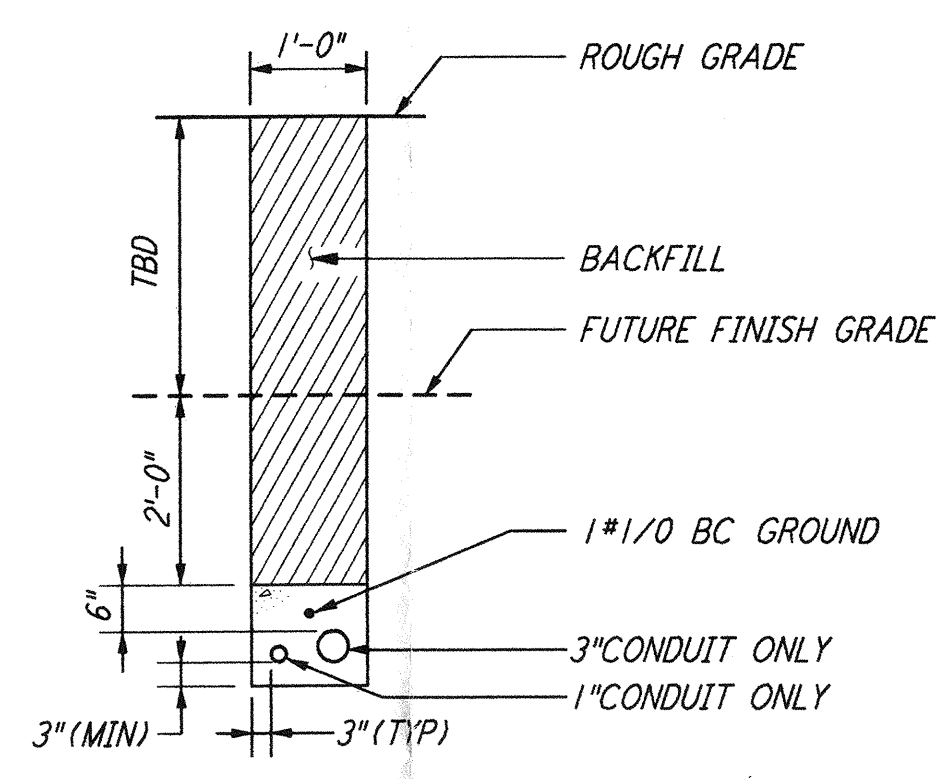
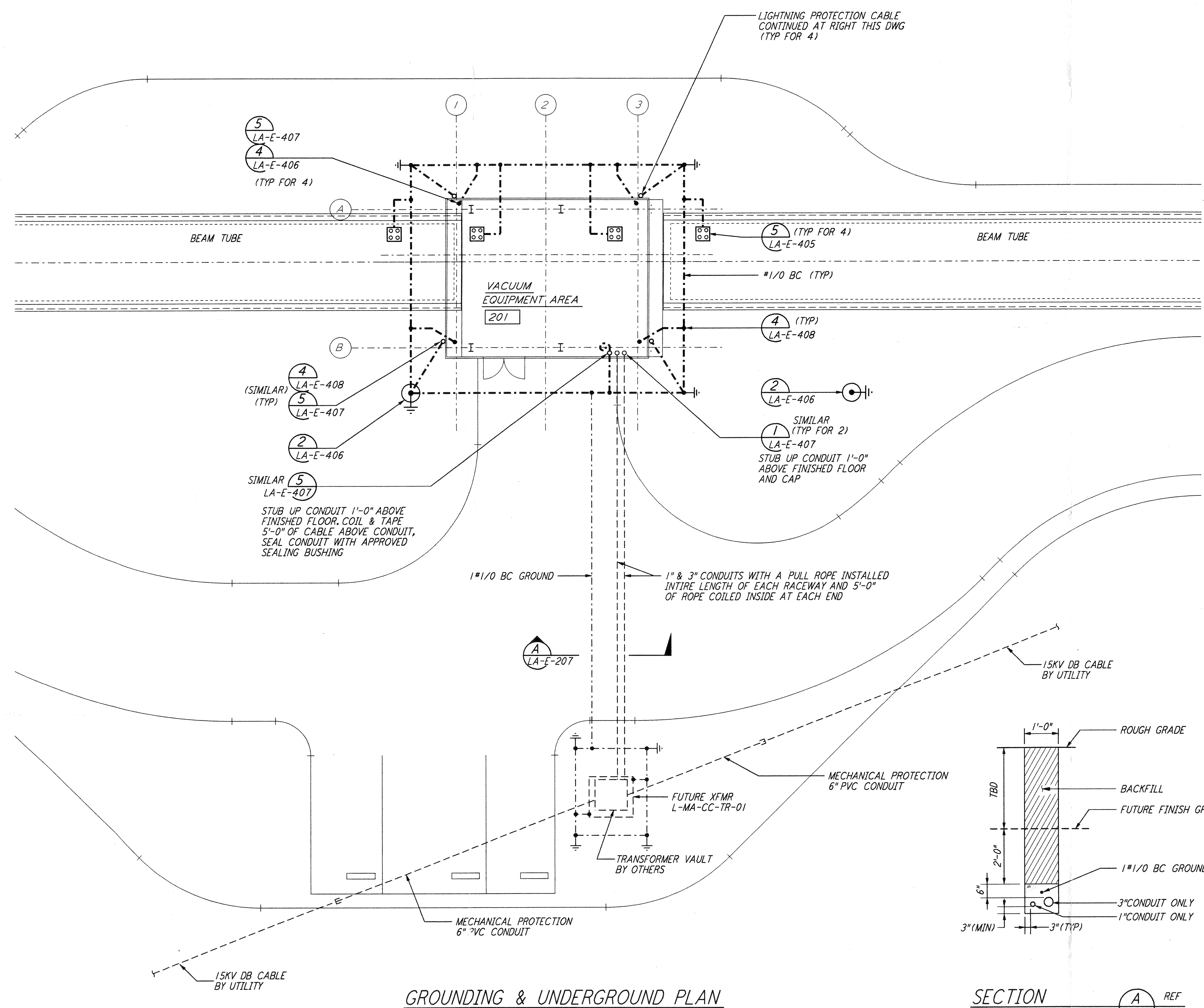
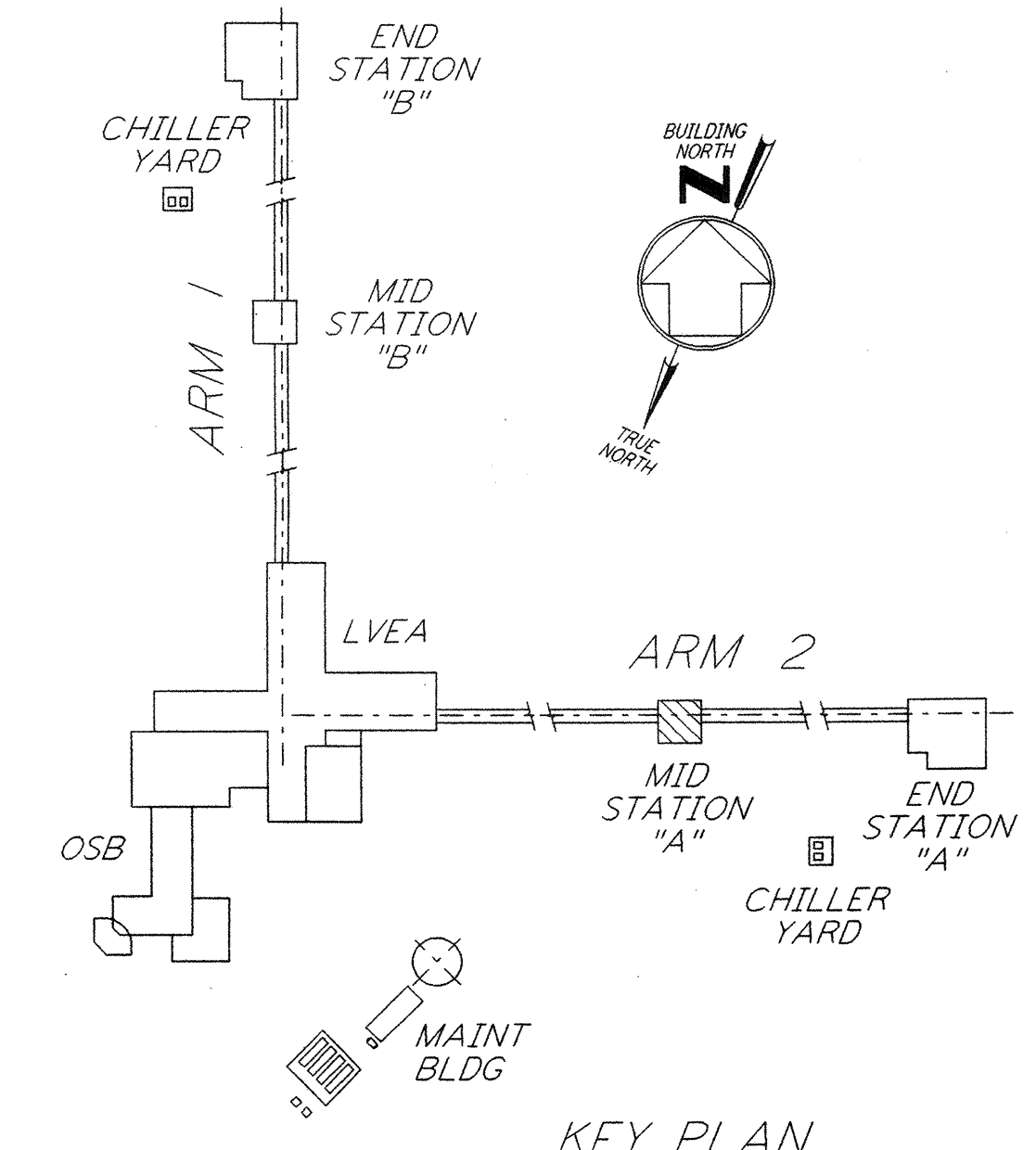


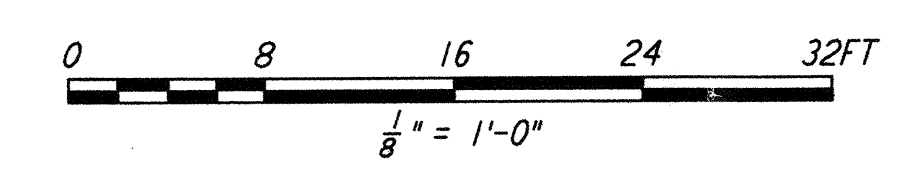
- NOTES:**
- FOR GENERAL NOTES SEE DWG. LA-E-103.
  - CONNECT GROUNDING CONDUCTOR TO REBAR AT BOTTOM OF FOUNDATION. REBAR SHALL BE AT LEAST 20 FEET LONG AND 1/2" DIAMETER.
  - SEE CIVIL DRAWING LA-C-021 FOR ACTUAL LOCATION OF TRANSFORMER.
  - SEE SPECIFICATION SECTION 16670 FOR LIGHTNING PROTECTION MATERIAL.
  - GROUND CONNECTION TO STRUCTURAL STEEL SHALL BE EXOTHERMIC WELD TYPE, AND APPROPRIATE FOR THE CABLE AND STRUCTURAL STEEL.



**LIGHTNING PROTECTION PLAN**



**KEY PLAN**



not be reproduced, copied, loaned, exhibited, or used in any other way, except by written consent from PARSONS to the borrower.

This document and the design it covers are the property of PARSONS. They are loaned only with the borrower's expressed written agreement that they will

DRAWING NO.	DESCRIPTION	NO.	DATE	BY	CHKD	ENGR	PROJ	DESCRIPTION
		1	8-7-98	JE	AK	MM		ISSUED FOR AS-BUILT

ISSUED FOR CONSTRUCTION			
DRAWN	M. M.	11-15-96	
CHECKED	JCL	7-24-96	
ENGINEER	KCR	10-25-96	
PROJ	T. D. M.	11-15-96	

**AS-BUILT DRAWINGS**

100 WEST WALNUT STREET  
PASADENA, CALIFORNIA

CALIFORNIA INSTITUTE OF TECHNOLOGY  
MASSACHUSETTS INSTITUTE OF TECHNOLOGY

**LIGO-D961031-01-0**

LASER INTERFEROMETER  
GRAVITATIONAL-WAVE OBSERVATORY  
SITE NO.2 - LIVINGSTON, LOUISIANA

TITLE	SCALE	CONTRACT NUMBER	PROJECT NUMBER
ELECTRICAL MID STATION A GROUNDING & UNDERGROUND PLAN	AS NOTED	PP150969	8094
SHEET NUMBER		REVISIONS	
<b>LA-E-207</b>			