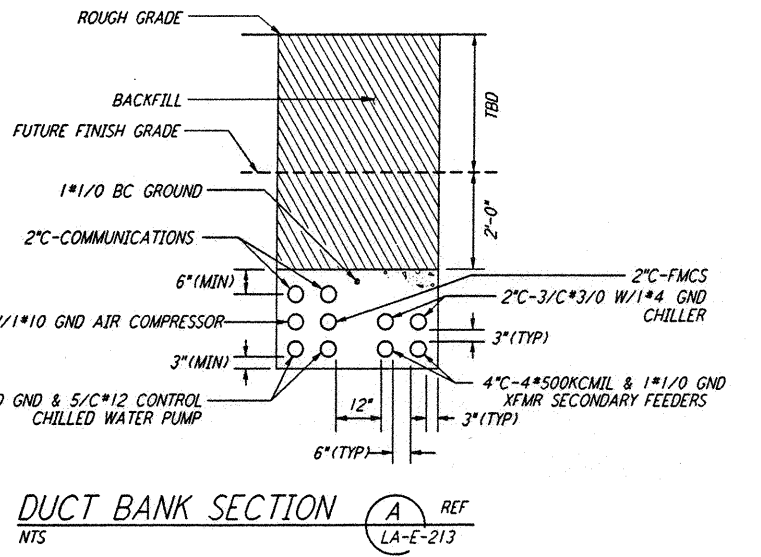
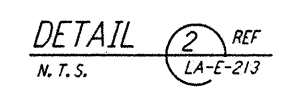
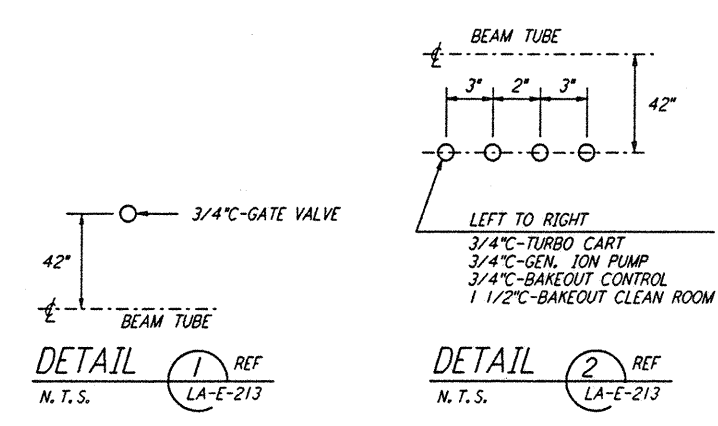
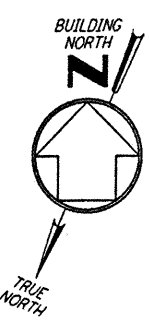
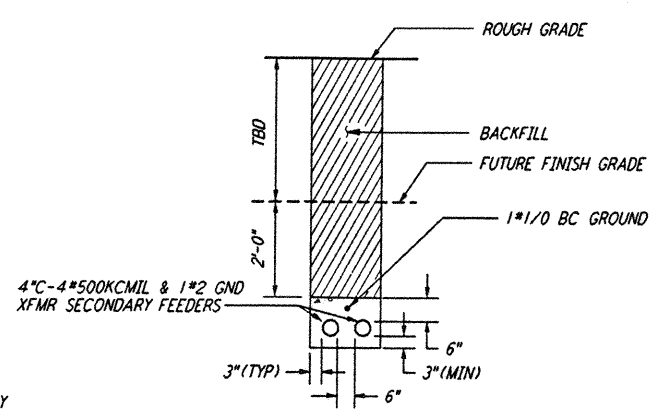
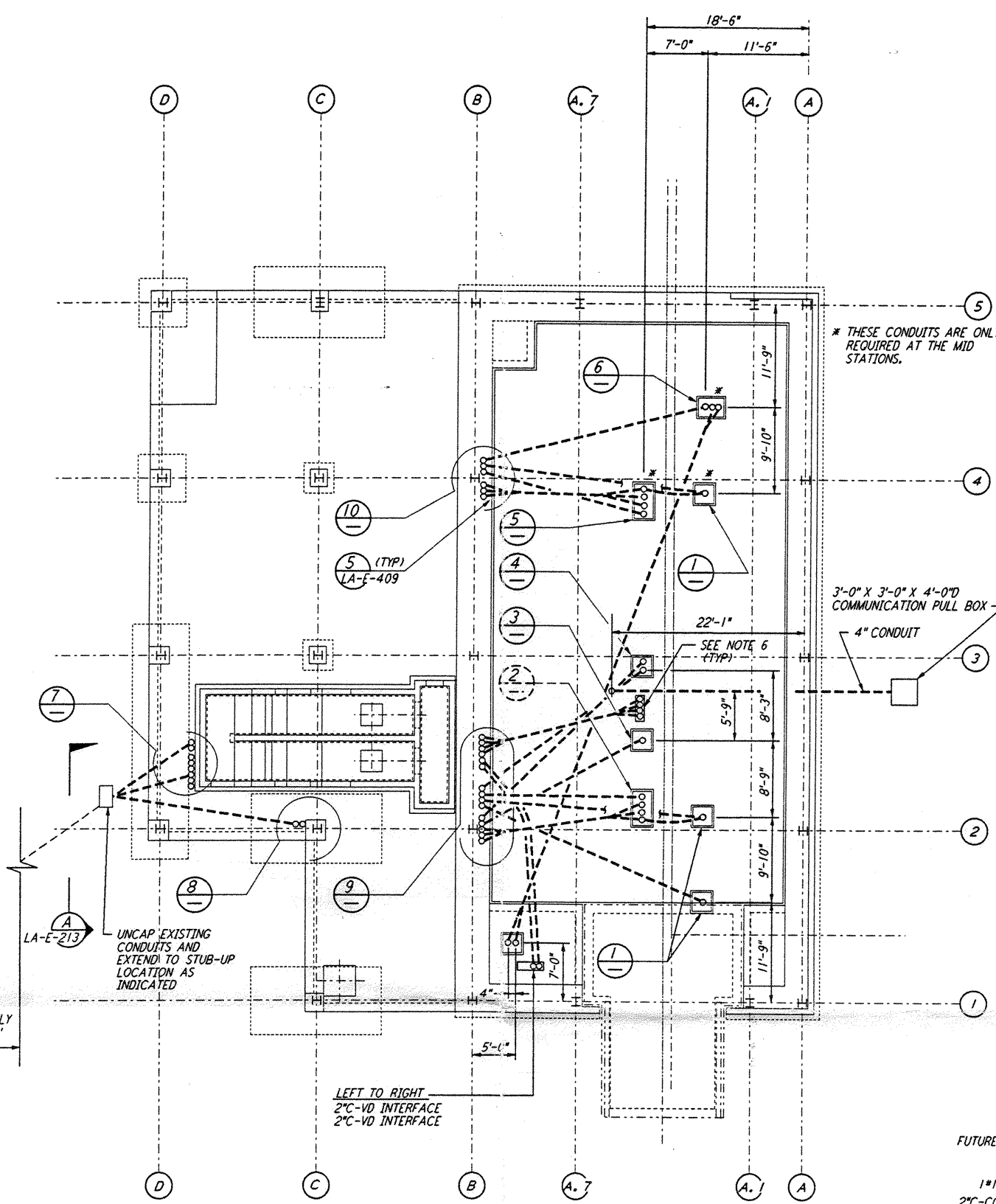


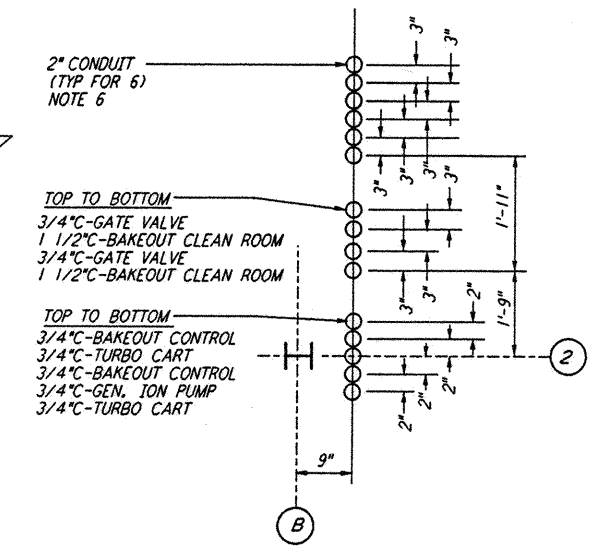
5 4 3 2



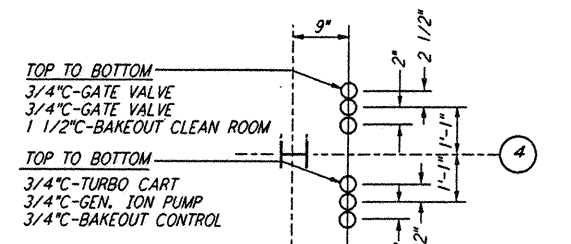
DUCT BANK SECTION A REF LA-E-213 N.T.S.



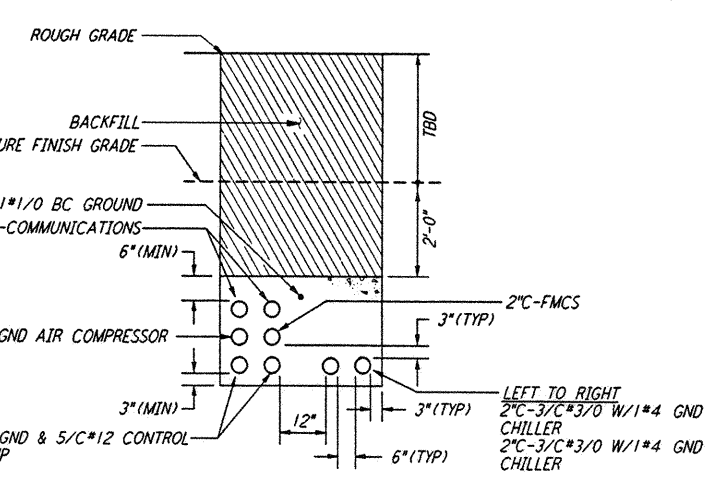
DUCT BANK SECTION B REF LA-E-213 N.T.S.



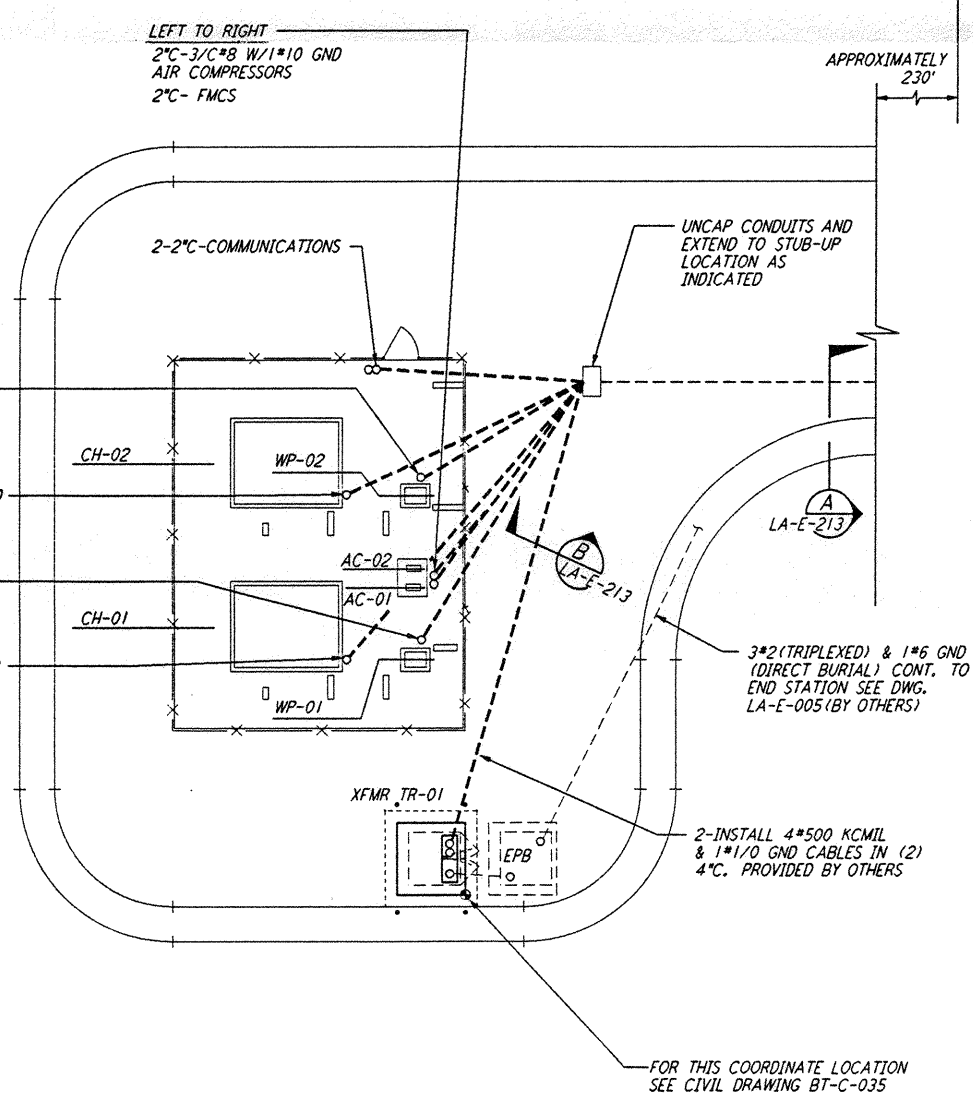
DETAIL 9 REF LA-E-213 N.T.S.



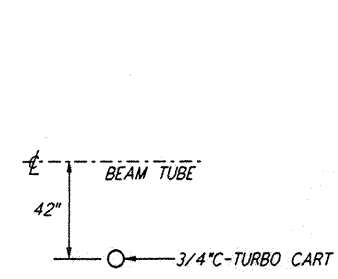
DETAIL 10 REF LA-E-213 N.T.S.



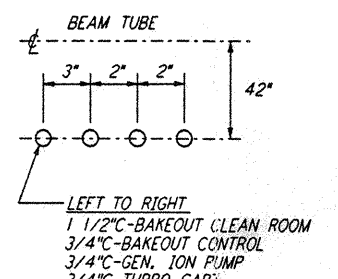
DUCT BANK SECTION C REF LA-E-213 N.T.S.



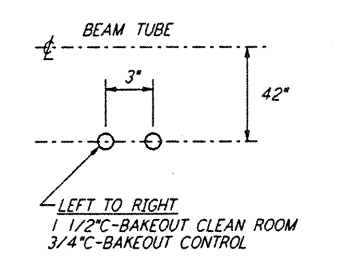
UNDERGROUND CHILLER PLAN



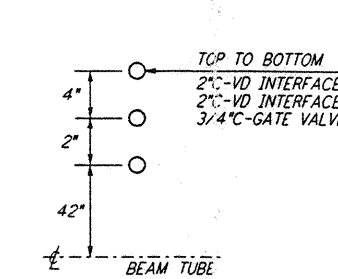
DETAIL 3 REF LA-E-213 N.T.S.



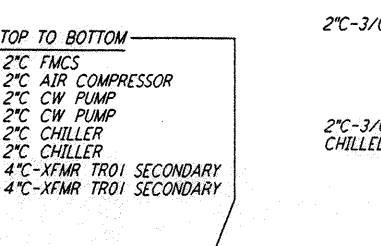
DETAIL 5 REF LA-E-213 N.T.S.



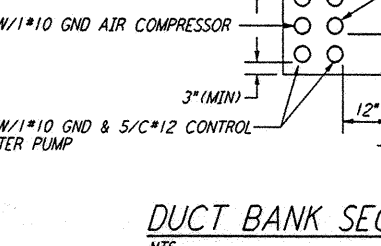
DETAIL 4 REF LA-E-213 N.T.S.



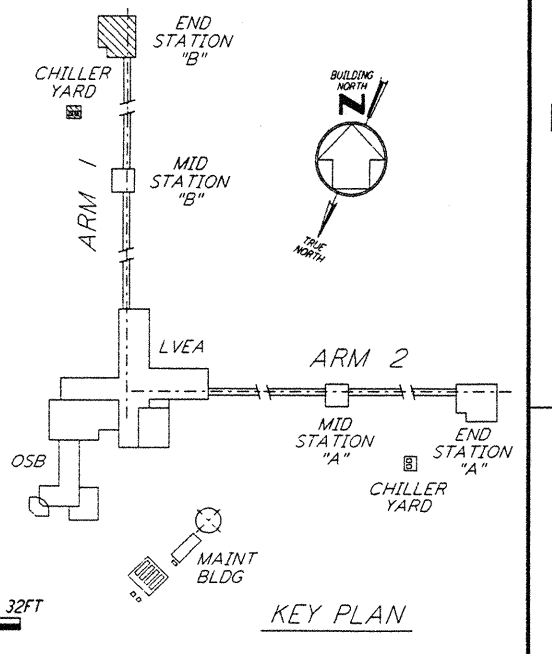
DETAIL 6 REF LA-E-213 N.T.S.



DETAIL 7 REF LA-E-213 N.T.S.



DETAIL 8 REF LA-E-213 N.T.S.



KEY PLAN

LIGO-D961034-A-0

1" = 1'-0"

NO.	DATE	BY	CHKD	ENGR	PROJ	DESCRIPTION
A	6-14-96	JCL	JCL	JCL	JCL	FINAL DESIGN REVIEW

DRAWN	M. M.
CHECKED	
ENGINEER	
PROJ	

PARSONS
 100 WEST WALNUT STREET
 PASADENA, CALIFORNIA

LIGO
 CALIFORNIA INSTITUTE OF TECHNOLOGY
 MASSACHUSETTS INSTITUTE OF TECHNOLOGY

LASER INTERFEROMETER
 GRAVITATIONAL-WAVE OBSERVATORY
 SITE NO. 2 - LIVINGSTON, LOUISIANA

TITLE	PROJECT NUMBER
ELECTRICAL END STATION B UNDERGROUND PLAN	8094
AS NOTED	CONTRACT NUMBER
LA-E-213	PPI 150969

not be reproduced, copied, loaned, exhibited, or used in any other way, except by written consent from PARSONS to the borrower.

This document and the design it covers are the property of PARSONS. They are loaned only with the borrower's expressed written agreement that they will

THU JUN 20 09:35:29 1996 53128002 J:\PL\15\SUB\REV\LA-E-213.DWG

THU JUN 20 09:35:29 1996 53128002 J:\PL\15\SUB\REV\LA-E-213.DWG