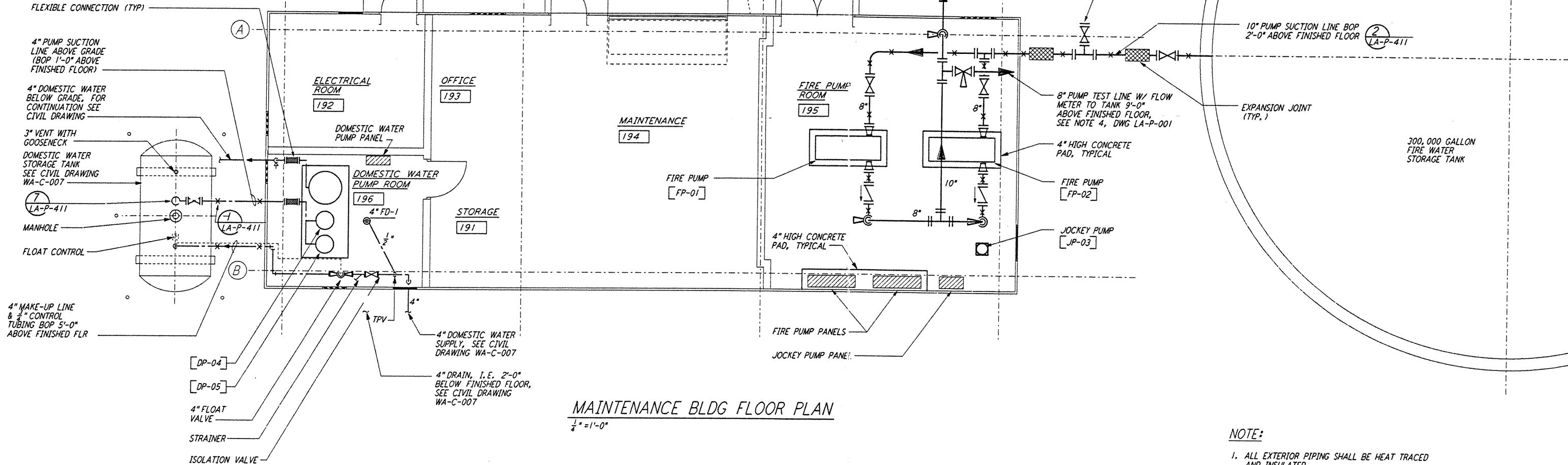
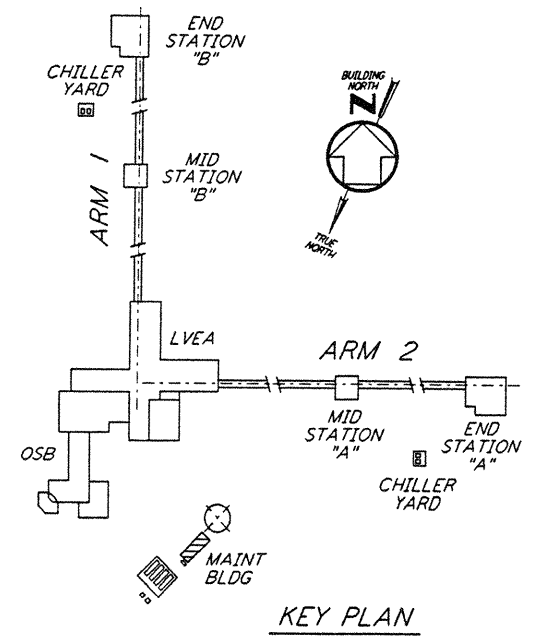
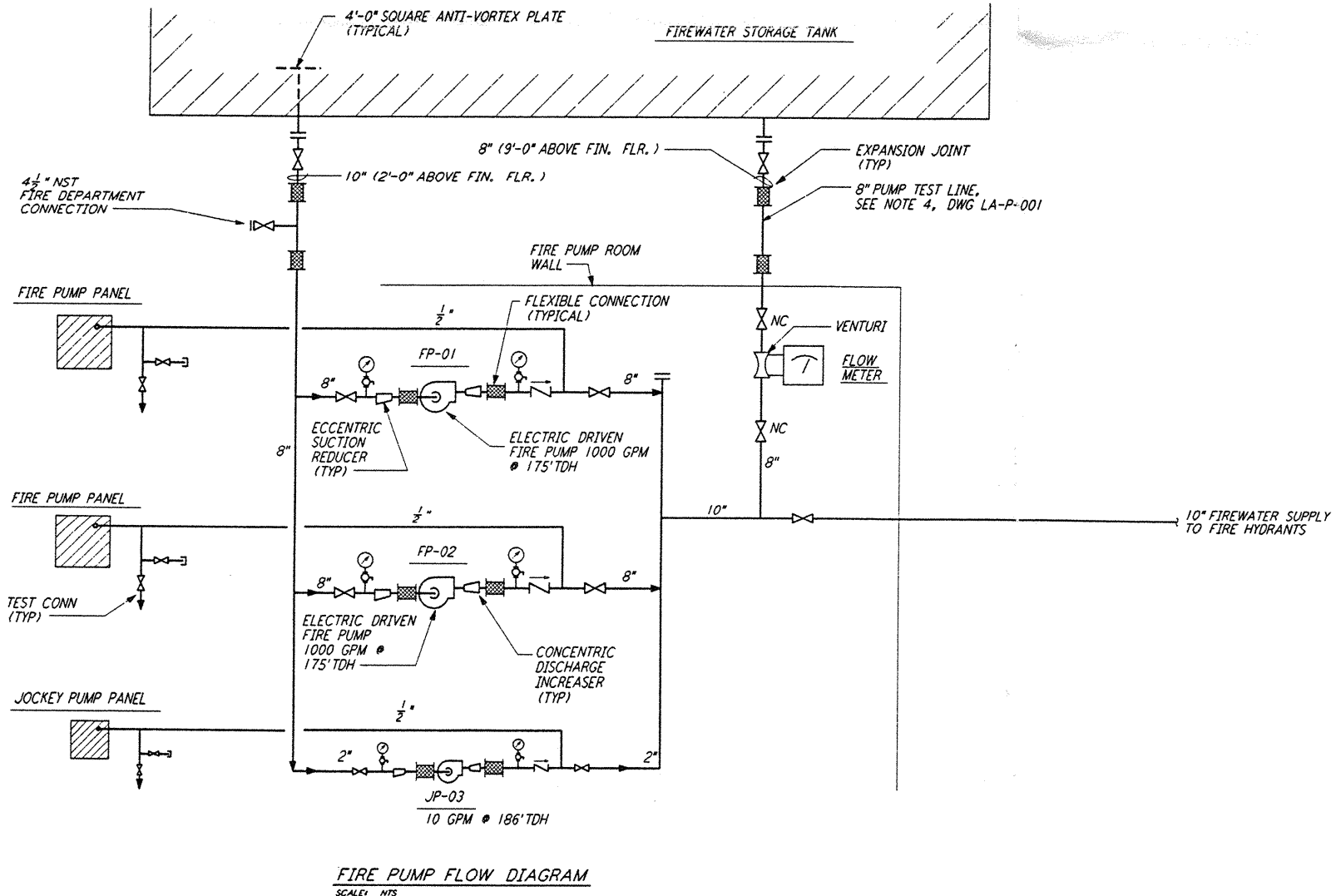


5 4 3 2

E
D
C
B
A



NOTE:
 1. ALL EXTERIOR PIPING SHALL BE HEAT TRACED AND INSULATED.



0 4 8 12 16 FT
 1/4" = 1'-0"

LIGO-D961050-B-O

This document and the design it covers are the property of PARSONS. They are loaned only with the borrower's expressed written agreement that they will not be reproduced, copied, loaned, exhibited, or used in any other way, except by written consent from PARSONS to the borrower.

This document and the design it covers are the property of PARSONS. They are loaned only with the borrower's expressed written agreement that they will not be reproduced, copied, loaned, exhibited, or used in any other way, except by written consent from PARSONS to the borrower.

FILE: J:\LIGO\13\13081230.DWG 3/17/96 3:27:20PM J:\LIGO\13\13081230.DWG 3/17/96 3:27:20PM

FILE: J:\LIGO\13\13081230.DWG 3/17/96 3:27:20PM J:\LIGO\13\13081230.DWG 3/17/96 3:27:20PM

NO.	DATE	BY	CHKD	ENGR	PROJ	DESCRIPTION
B	6-14-96	DG	MP	MP	MP	FINAL DESIGN REVIEW
A	10-31-95	SG	MP	MP	MP	PRELIMINARY DESIGN REVIEW

DRAWN	DG
CHECKED	
ENGINEER	
PROJ	

PARSONS
 100 WEST WALNUT STREET
 PASADENA, CALIFORNIA

LIGO
 CALIFORNIA INSTITUTE OF TECHNOLOGY
 MASSACHUSETTS INSTITUTE OF TECHNOLOGY

LASER INTERFEROMETER
 GRAVITATIONAL-WAVE OBSERVATORY
 SITE NO. 2 - LIVINGSTON, LOUISIANA

PLUMBING
 CORNER STATION
 MAINTENANCE BUILDING
 FLOOR PLAN & FLOW DIAGRAM

SCALE: AS NOTED
 CONTRACT NUMBER: PP150969
 PROJECT NUMBER: 8094

SHEET NUMBER: **LA-P-113**

5 4 3 2

LIGOLAF3.BDR