

TABLE 1

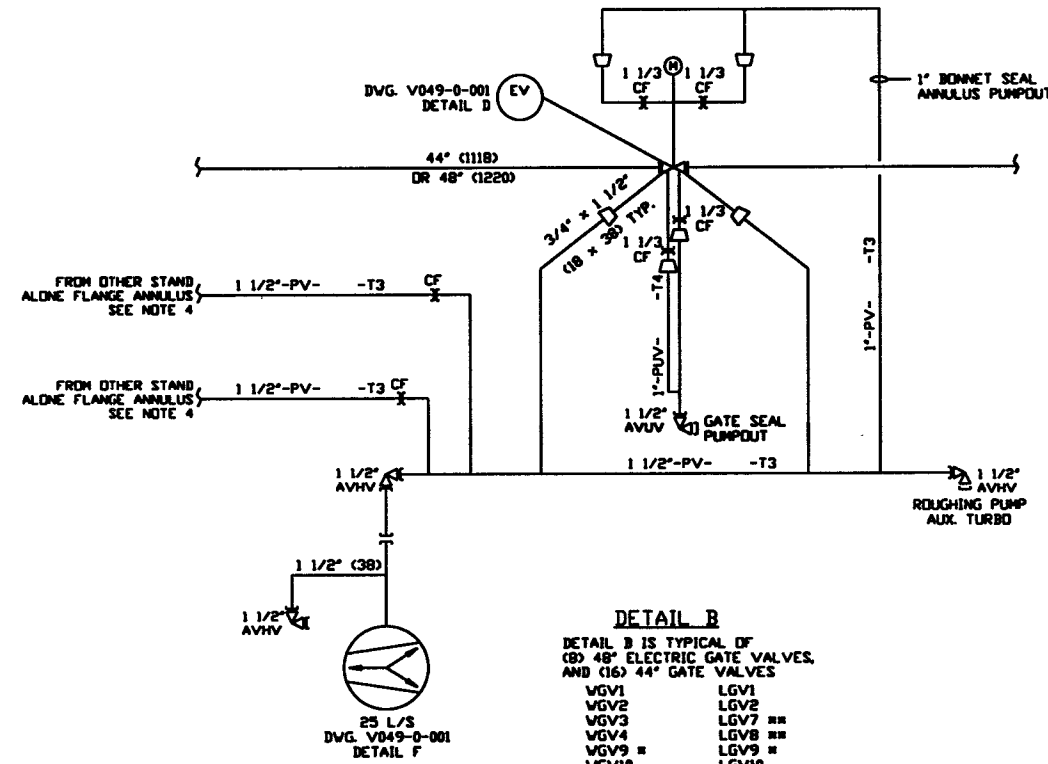
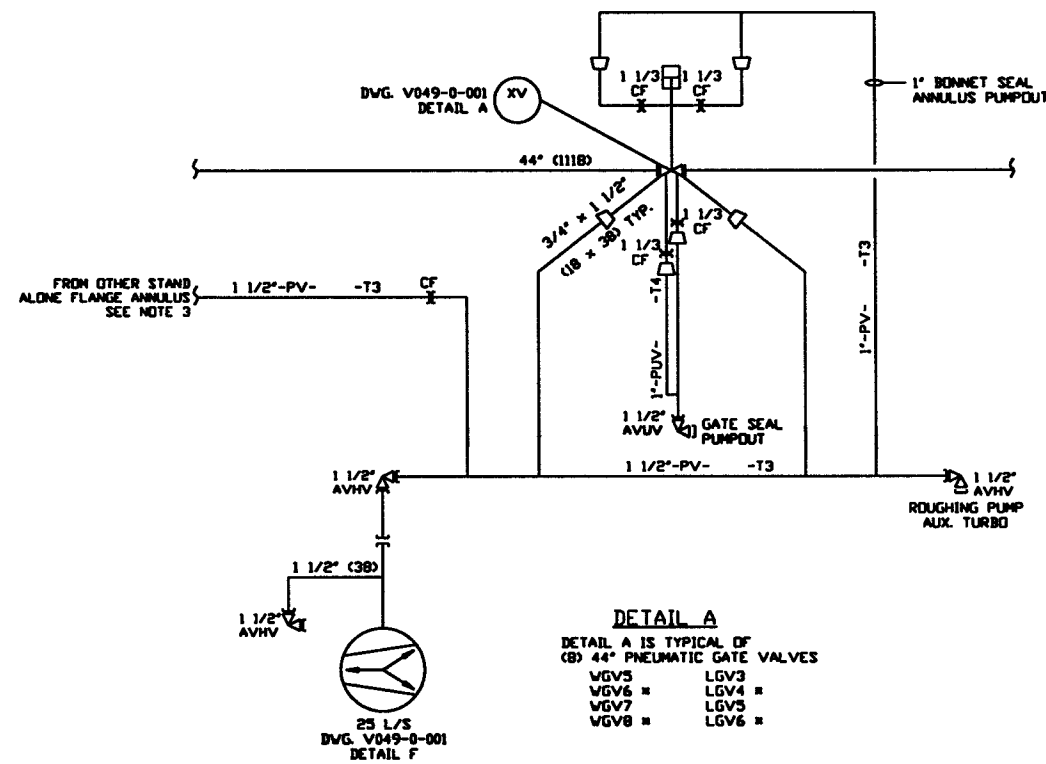
VALVE	VACUUM LINE
VG1	1 1/2"-PV-1117-T3
VG2	1 1/2"-PV-1118-T3
VG3	1 1/2"-PV-1119-T3
VG4	1 1/2"-PV-1120-T3
VG5	1 1/2"-PV-1113-T3
VG6	1 1/2"-PV-1114-T3
VG7	1 1/2"-PV-1115-T3
VG8	1 1/2"-PV-1116-T3
VG9	1 1/2"-PV-230-T3
VG10	1 1/2"-PV-231-T3
VG11	1 1/2"-PV-232-T3
VG12	1 1/2"-PV-233-T3
VG13	1 1/2"-PV-330-T3
VG14	1 1/2"-PV-331-T3
VG15	1 1/2"-PV-332-T3
VG16	1 1/2"-PV-333-T3
VG17	1 1/2"-PV-425-T3
VG18	1 1/2"-PV-426-T3
VG19	1 1/2"-PV-525-T3
VG20	1 1/2"-PV-526-T3
LGV1	1 1/2"-PV-682-T3
LGV2	1 1/2"-PV-683-T3
LGV3	1 1/2"-PV-678-T3
LGV4	1 1/2"-PV-679-T3
LGV5	1 1/2"-PV-680-T3
LGV6	1 1/2"-PV-681-T3
LGV7	1 1/2"-PV-725-T3
LGV8	1 1/2"-PV-825-T3
LGV9	1 1/2"-PV-726-T3
LGV10	1 1/2"-PV-727-T3
LGV11	1 1/2"-PV-826-T3
LGV12	1 1/2"-PV-827-T3

NOTES:

- DIMENSIONS IN () ARE IN MILLIMETERS.
- SEE TABLE 1 FOR PIPING LINE NUMBERS.
- FROM ADDITIONAL FLANGE ANNULUS FLANGE PAIR IDENTIFIED BY THE SPOOL PIECES THAT MAKE UP THE JOINT.

VALVE	SPOOLPIECE INTERFACE
VG5	B9/A1
VG6	WCP1/BE-4
VG7	B-9/A-1
VG8	WCP2/BE-4
LGV3	B9/A1
LGV4	LCP1/BE-4
LGV5	B9/A1
LGV6	LCP2/BE-4
- FROM ADDITIONAL FLANGE ANNULUS FLANGE PAIR IDENTIFIED BY THE SPOOL PIECES THAT MAKE UP THE JOINT.

VALVE	SPOOLPIECE INTERFACE
VG1	-
VG2	-
VG3	B-6/A-6, A-12/B-4
VG4	B-7/A-6, A-12/B-4
VG9	WCP3/BE-4
VG10	A-7/A-1
VG11	-
VG12	WCP4/BE-4
VG13	WCP5/BE-4
VG14	A-7/A-1
VG15	-
VG16	WCP6/BE-4
VG17	WCP7/BE-4
VG18	A-1/A-7
VG19	WCP8/BE-4
VG20	A-1/A-7
LGV1	-
LGV2	-
LGV7	-
LGV8	-
LGV9	LCP3/BE-4
LGV10	A-1/A-7
LGV11	LCP4/BE-4
LGV12	A-1/A-7



DETAIL A
 DETAIL A IS TYPICAL OF
 (8) 44" PNEUMATIC GATE VALVES
 VG5 = LGV3
 VG6 = LGV4
 VG7 = LGV5
 VG8 = LGV6

DETAIL B
 DETAIL B IS TYPICAL OF
 (8) 48" ELECTRIC GATE VALVES,
 AND (16) 44" GATE VALVES
 VG1 = LGV1
 VG2 = LGV2
 VG3 = LGV7
 VG4 = LGV8
 VG9 = LGV9
 VG10 = LGV10
 VG11 = LGV11
 VG12 = LGV12
 VG13 =
 VG14 =
 VG15 =
 VG16 =
 VG17 =
 VG18 =
 VG19 =
 VG20 =

- THESE VALVES HAVE BUTTWELDED CONNECTIONS ON ONE END AND THEREFORE HAVE ONLY ONE FLANGE ANNULUS PUMP/OUT.
- THESE VALVES HAVE BUTTWELDED CONNECTIONS ON BOTH ENDS AND THEREFORE HAVE NO FLANGE ANNULUS PUMP/OUTS OR PUMPS.

LIGO D961073-01-V

PROPRIETARY AND CONFIDENTIAL EQUIPMENT CONTAINS PROPRIETARY INFORMATION BELONGING TO PROCESS SYSTEMS INTERNATIONAL, INC. OR ITS TRADING COMPANIES AND SHALL BE USED ONLY FOR THE PURPOSES FOR WHICH IT WAS SUPPLIED. IT SHALL NOT BE COPIED, REPRODUCED OR OTHERWISE USED, AND SUCH INFORMATION BE FURNISHED IN WHOLE OR IN PART TO OTHERS EXCEPT IN ACCORDANCE WITH THE TERMS OF ANY AGREEMENT UNDER WHICH IT WAS SUPPLIED OR WITH THE PRIOR WRITTEN CONSENT OF PROCESS SYSTEMS INTERNATIONAL, INC. AND SHALL BE RETURNED UPON REQUEST.	V049-0-001 P & ID LEGEND	V049-0-005	PIPING & INSTRUMENTATION DIAGRAM LIGO VACUUM EQUIPMENT 112cm & 122cm GATE VALVES	
	DWG. NO.	DESCRIPTION	DWG. NO.	DESCRIPTION
	DO NOT SCALE THIS DRAWING	USED ON:	NEXT ASSY:	UNLESS OTHERWISE SPECIFIED DIMENSIONS ARE IN INCHES TOLERANCES: FRACTIONS: ±0.005 DECIMALS: ±0.005 HOLE DIMENSIONS: ±0.005 TWO PLACE DECIMAL: ±0.005 THREE PLACE DECIMAL: ±0.005 FINISHED SURFACE: ±0.005 BREAK CORNERS: R0.015 REMOVE ALL BURRS
	1 ISSUE FOR FDR	0 ISSUE FOR DESIGN	P1 PRELIMINARY DESIGN UPDATE	PROCESS SYSTEMS INTERNATIONAL, INC. 30 WILBUR DR. WESTBOROUGH, MASSACHUSETTS 01581 USA