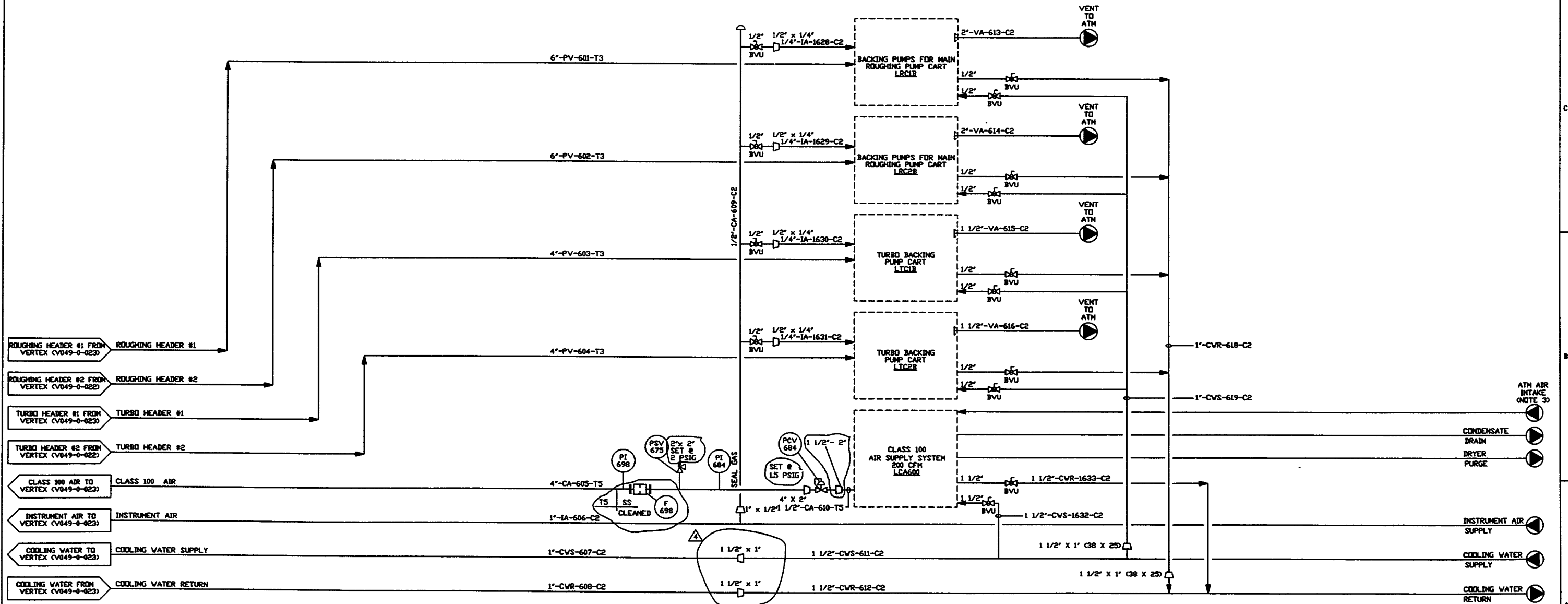


**NOTES:**  
 1. DIMENSIONS IN ( ) ARE IN MILLIMETERS.  
 2. BEAM MANIFOLD DIMENSIONS INDICATE INSIDE DIAMETERS.  
 3. ATMOSPHERIC AIR INTAKE SHALL BE LOCATED AWAY FROM SOURCES OF CONTAMINATION.



REV	DATE	DESCRIPTION
4	02.14.97	REVISED
3	01.03.97	REVISED
2	10.25.96	ISSUE FOR FDR UPDATE
1	04.26.96	ISSUE FOR FDR
0	01.03.96	ISSUE FOR DESIGN

REV	DATE	DESCRIPTION	CHKD	DRWN	DATE	DESD
4	02.14.97	REVISED	SM	IMC/V	RJV	02.14.97
3	01.03.97	REVISED	SM	IMC/V	RJV	10.25.96
2	10.25.96	ISSUE FOR FDR UPDATE	SM	IMC/V	RJV	04.26.96
1	04.26.96	ISSUE FOR FDR	SM	IMC/V	RJV	01.03.96
0	01.03.96	ISSUE FOR DESIGN	SM	IMC/V	RJV	01.03.96

**PROCESS SYSTEMS INTERNATIONAL, INC.**  
 20 WALKUP DR. WESTBOROUGH, MASSACHUSETTS 01581 USA

**PIPING & INSTRUMENTATION DIAGRAM**  
**LIGO VACUUM EQUIPMENT**  
**LOUISIANA SITE**  
**CORNER STATION MECHANICAL ROOM**

CHG FILE: V0490026  
 SIZE: D  
 DWG NO: V049-0-026  
 REV: 4

SCALE: NONE  
 SHEET: 1 OF 1