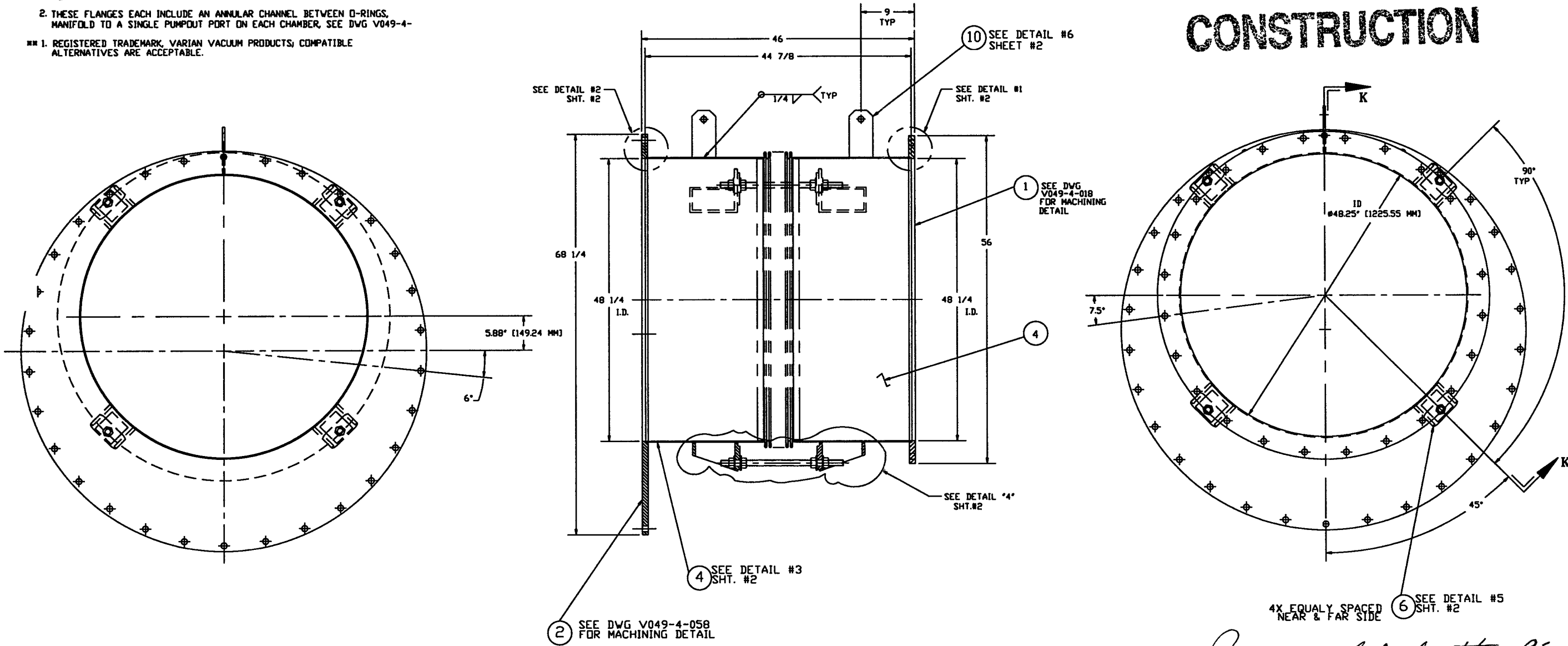


NOTES:

9. LEAK TEST & METHOD PER PSI SPEC: V049-2-014
8. CERTIFIED MANUFACTURER'S MATERIAL TEST REPORTS REQUIRED.
7. BOLT HOLES TO STRADDLE CENTERLINE ± .015 AS SHOWN.
6. CLEAN PER SPEC: V049-2-015
5. DO NOT USE CARBON STEEL BRUSHES OR BRUSHES CONTAMINATED WITH CARBON STEEL ON STAINLESS OR ALUMINUM MATERIAL.
4. SPOOL FABRICATION TO BE IN ACCORDANCE WITH SPEC. V049-2-097.
3. FOR FLANGE DETAILS SEE DWG. V049-4-018 & 058.
2. THESE FLANGES EACH INCLUDE AN ANNULAR CHANNEL BETWEEN O-RINGS, MANIFOLD TO A SINGLE PUMPOUT PORT ON EACH CHAMBER, SEE DWG V049-4-
1. REGISTERED TRADEMARK, VARIAN VACUUM PRODUCTS; COMPATIBLE ALTERNATIVES ARE ACCEPTABLE.

ITEM	PART NUMBER	SUFFIX	QTY	UM	DESCRIPTION
1	V049-4-018F2	3	1	#	48.25 ID X 56" OD FLANGE DETAIL
2	V049-4-058	3	1	#	48.25 ID V/ OFFSET X 68.25 OD FLANGE DETAIL
3	V0494A12P1	3	1	#	BELLOWS ASSY
4	DETAIL #3	3	2	#	48.25 ID SHELL 304 SST. 1/4" PLATE
5	DETAIL #4	3	4	#	TIE ROD, 1-BUNC THRD. ROD A-36
6	DETAIL #5	3	8	#	TIE LUG, 8.0 X 6.0 X .5 THK. 304 SST.
7	DETAIL #5	3	8	#	4.0 X 3.75 X .38 THK PLT. 304 SST.
8			3	10	MUT. HEX 1-BUNC A-563 GR. A.
9	#	#	16	#	WASHER, FLAT, 1" A36
10	#	#	2	#	PLATE, 8" X 4" X 3/8 304 SST.

NOT FOR CONSTRUCTION



Raymond S. Liatto, PE
5/7/96

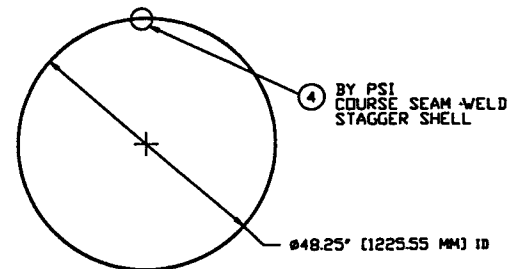
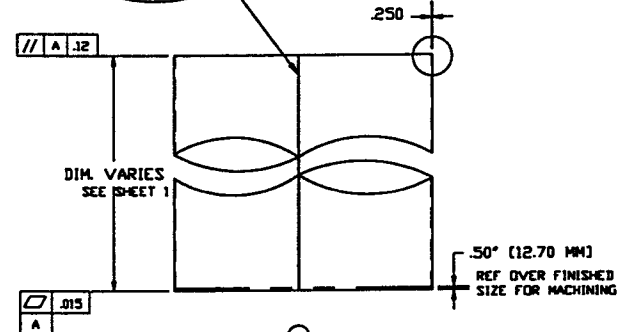
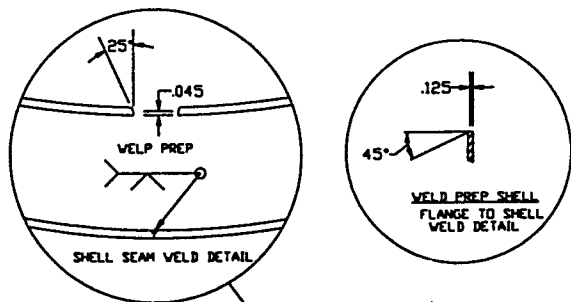
UIGO D961146-00-V

UNLESS OTHERWISE SPECIFIED DIMENSIONS ARE IN INCHES		FRACTIONAL & J		ANGULAR DIMENSIONS 10'-20" BEHIND 10"		TWO PLACE DECIMAL & .00		THREE PLACE DECIMAL & .000		FINISHED SURFACE AND BREAK CONTOUR TO BE SHOWN		REMOVE ALL BURRS	
DO NOT SCALE THIS DRAWING	0	ISSUED FOR FDR											
USED ON	REV	DESCRIPTION	CHKD	DRWN	DATE	DESB	CAD FILE	SIZE	DWG NO	REV	SCALE	SHEET	1 OF 2
NEXT ASS'Y:		ISSUE DESCRIPTION					V0494A12	D	V049-4-A-12	0	NONE		

CONFIDENTIAL
CONTAINS PROPRIETARY INFORMATION BELONGING TO PROCESS SYSTEMS INTERNATIONAL, INC. OR ITS AFFILIATED COMPANIES AND SHALL BE USED ONLY FOR THE PURPOSE FOR WHICH IT WAS SUPPLIED. IT SHALL NOT BE COPIED, REPRODUCED OR OTHERWISE DISSEMINATED WITHOUT THE WRITTEN CONSENT OF PROCESS SYSTEMS INTERNATIONAL, INC. AND SHALL BE RETURNED UPON REQUEST.

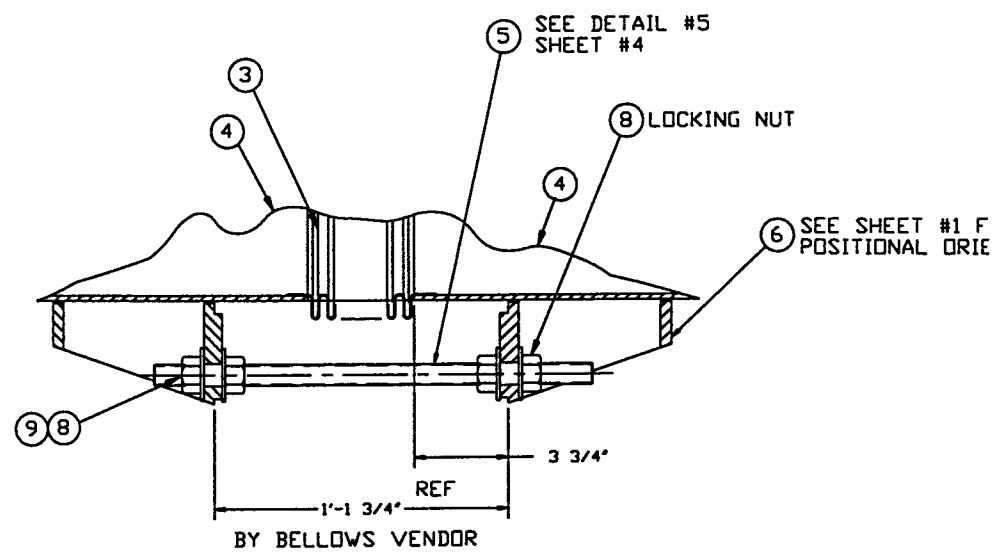
PROCESS SYSTEMS INTERNATIONAL, INC.
20 WALKUP DR. WESTBOROUGH, MASSACHUSETTS 01581 USA
ADAPTER A-12
48.25" ID & 60.50" ID FLG.
LIGO VACUUM EQUIPMENT

May 07, 1996 - 104347

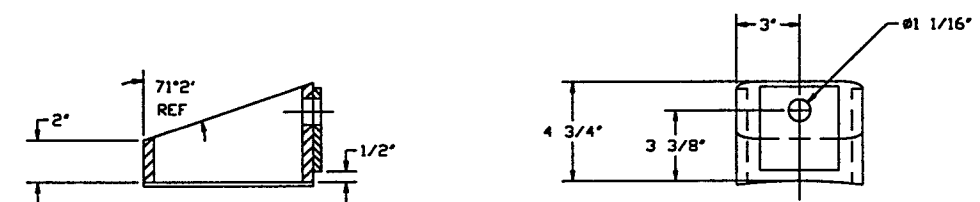
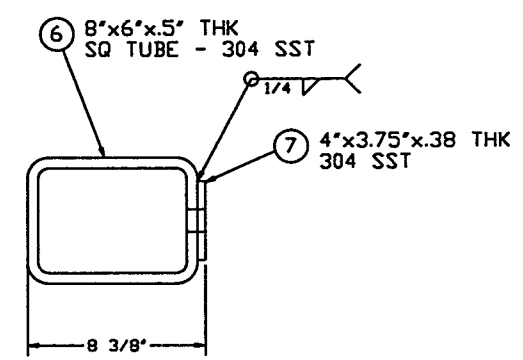


DETAIL "3"

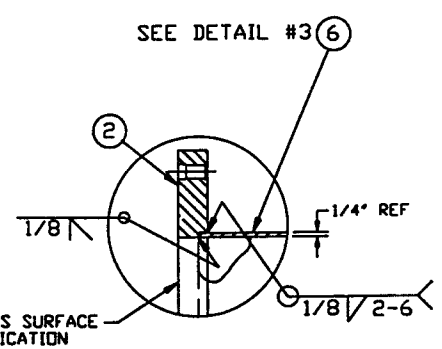
48.25 ID x .25 THK WALL 304 SST



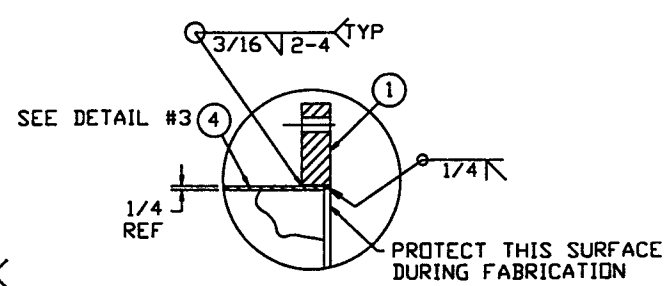
DETAIL "4"



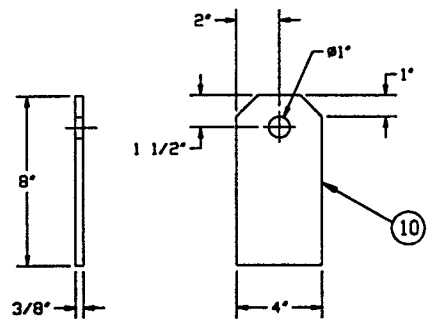
DETAIL #5



DETAIL #2



DETAIL #1



DETAIL "6"

QTY: 2

NOT FOR CONSTRUCTION

Raymond D. Coates, P.E.
5/7/96

LIGO-D961146-00-Y

PROCESS SYSTEMS INTERNATIONAL, INC. <small>20 HAWKUP DR. WESTBOROUGH, MASSACHUSETTS 01581 USA</small>			
ADAPTER A-12 48.25" ID & 60.50" ID LIGO VACUUM EQUIPMENT			
CAD FILE 494A12S2	SIZE D	REV. NO. V049-4-A-12	REV. 0
SCALE NONE	SHEET 2 OF 2		

REV. 07/1994 - THEPSIA