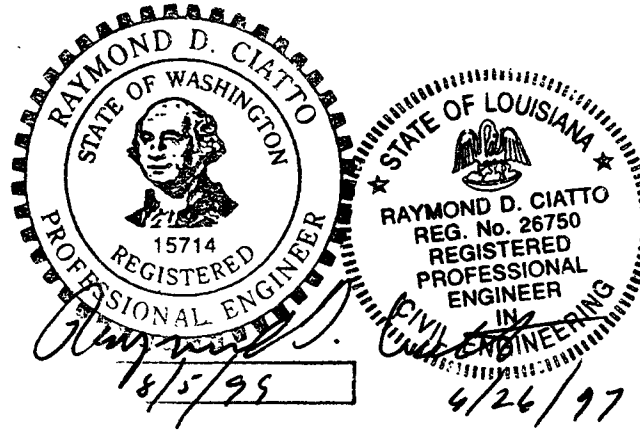


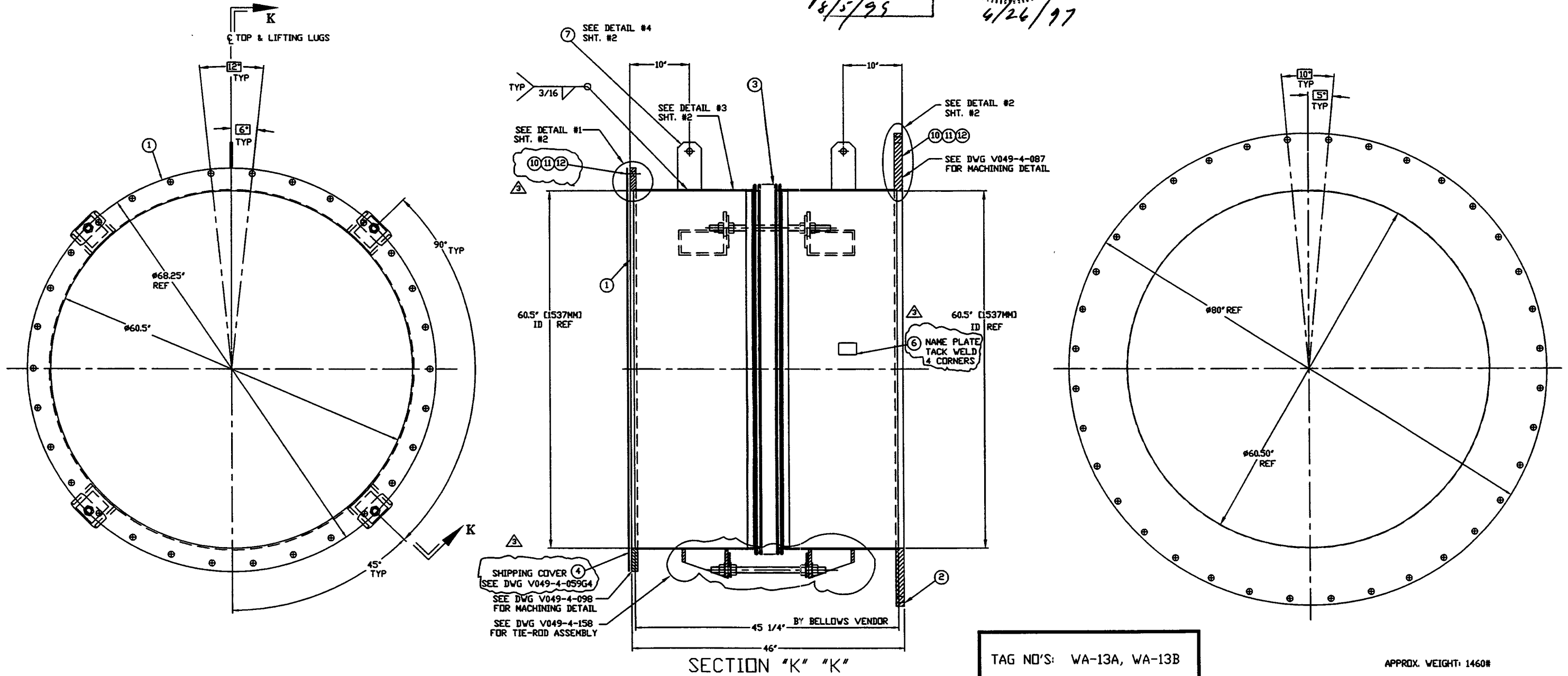
NOTES:

1. LEAK TEST & METHOD PER PSI SPEC: V049-2-014
2. CERTIFIED MANUFACTURER'S MATERIAL TEST REPORTS REQUIRED, AS NOTED.
3. BOLT HOLES OF ALL FLANGES TO STRADDLE VERTICAL CENTERLINE +/-0.15.
4. CLEAN PER SPEC: V049-2-015
5. DO NOT USE CARBON STEEL BRUSHES OR BRUSHES CONTAMINATED WITH CARBON STEEL ON STAINLESS OR ALUMINUM MATERIAL.
6. ADAPTER FABRICATION TO BE IN ACCORDANCE WITH SPEC. V049-2-097.
7. FOR FLANGE DETAILS SEE DWGS. V049-4-087 & V049-4-098.
8. TIGHTEN TIE-ROD NUTS WITH BELLOWS IN 'FREE' POSITION TO 100 FT-LB PRIOR TO LEAK TEST
9. EACH FINISHED SHELL IS TO BE MARKED WITH A SEQUENTIAL PSI SERIAL NUMBER. THE NUMBER IS TO BE MADE FROM THE DRAWING PLUS THE SEQUENTIAL NUMBER. V0494A13-01, -02 ETC.
10. PLATES PRIOR TO ROLLING MUST HAVE DIAGONAL CORNER TO CORNER DIMENSIONS WITHIN 1/16" OF EACH OTHER.
11. WDS NO'S. REFER TO WELD DATA SPEC. V049-2-084.



ITEM	PART NUMBER	SUFFIX	QTY	LN	DESCRIPTION
1	V0494098		1	EA	60.5 ID FLANGE DETAIL (FLAT)
2	V0494087		1	EA	60.5 ID X 80.0 ID FLANGE (FLAT)
3	V0494A13P1		1	EA	BELLOWS ASSY (PER SPEC V049-2-017)
4	V0494059G4		1	EA	SHIPPING COVER ASSY
5	###		4	EA	TIE-ROD ASSY. (PER V049-4-158)
6	V0494740		1	EA	PSI NAME PLATE, 2" X 3"
7	###		3	L5	FT BAR, 304 SST, 3/8" X 4"
8					
9					
10	202678		3	EA	BOLT, SA193B7 HEX HD, 7/8"-9UNC X 4" LG.
11	202679		3	EA	NUT, SA1942H HEX, 7/8"-9UNC
12	202581		3	EA	WASHER, STL, 1 3/4" OD X 15/16" ID X 1/4" THK

■ ELECTROLESS NICKEL PLATE
 ### SUPPLIED BY BELLOWS VENDOR



TAG NO'S: WA-13A, WA-13B

APPROX. WEIGHT: 1460#

DWG. NO.	DESCRIPTION	DWG. NO.	DESCRIPTION

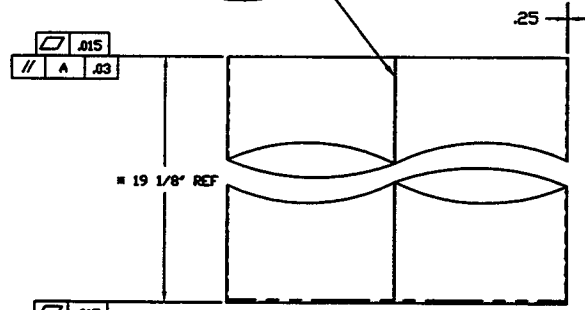
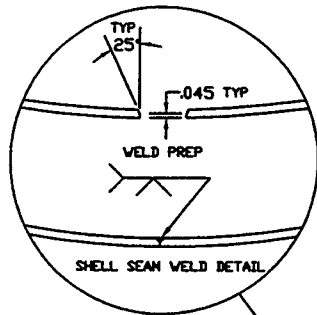
REV	DESCRIPTION	ISSUE DESCRIPTION
3	DESIGN UPDATE / FAB/SHIPPING AS NOTED	
2	DESIGN UPDATE/ISSUED FOR FABRICATION	
1	DESIGN UPDATE / FABRICATION BELLOWS ASSY. ONLY	
0	ISSUED FOR PDR	

PROCESS SYSTEMS INTERNATIONAL, INC.
 20 WALRUP DR. WESTBOROUGH, MASSACHUSETTS 01581 USA

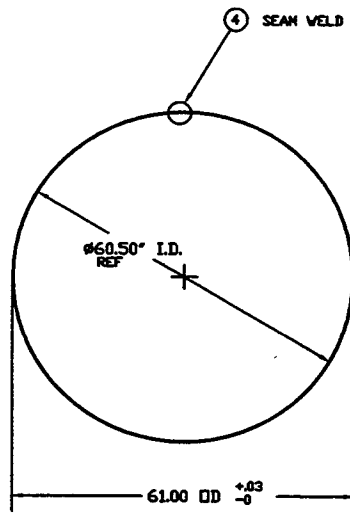
ADAPTER A-13
 60.50" ID x 72.25" ID
 LIGO VACUUM EQUIPMENT

CAD FILE: V0494A13P1
 SIZE: D
 DWG. NO.: V049-4-A13
 REV: 3

SCALE: NONE
 SHEET: 1 OF 2

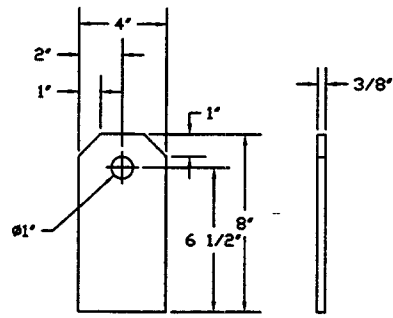


NOTE
 # FINAL FINISH LENGTH TO BE DETERMINED BY BELLOWS VENDOR

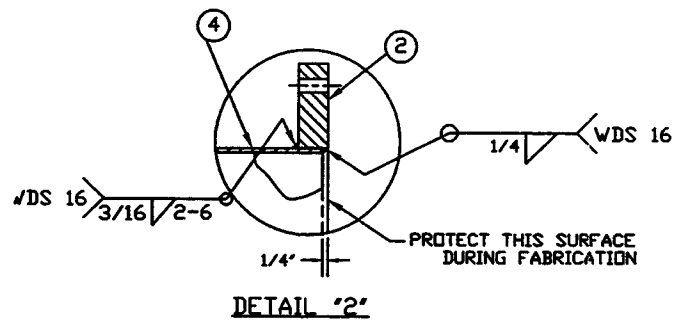


DETAIL '3'
 QTY: 2

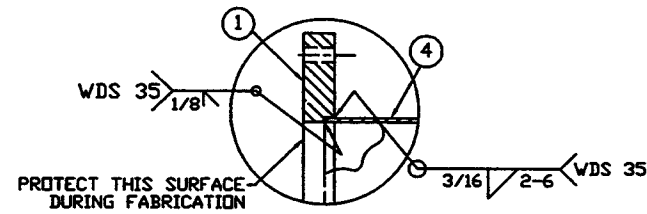
MAKE ONE FROM V049M163-1
 MAKE ONE FROM V049M152-1



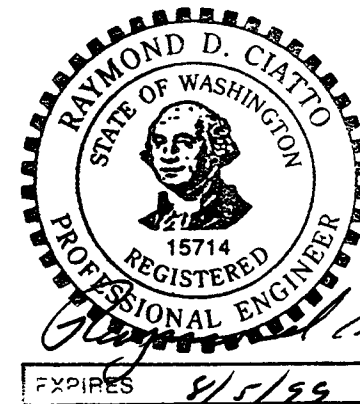
DETAIL '4'
 LIFTING LUG
 QTY: 2



DETAIL '2'



DETAIL '1'



PROCESS SYSTEMS INTERNATIONAL, INC. <small>30 WILKUP DR. WESTBOROUGH, MASSACHUSETTS 01581 USA</small>			
ADAPTER A-13 60.50" ID x 72.25" ID LIGO VACUUM EQUIPMENT			
<small>CAD FILE</small> 494A1352	<small>SIZE</small> D	<small>DRAW. NO.</small> V049-4-A-13	<small>REV.</small> 3
<small>SCALE</small> NONE	<small>SHEET</small> 2 OF 2		

Nov 25, 1996 - 14659E