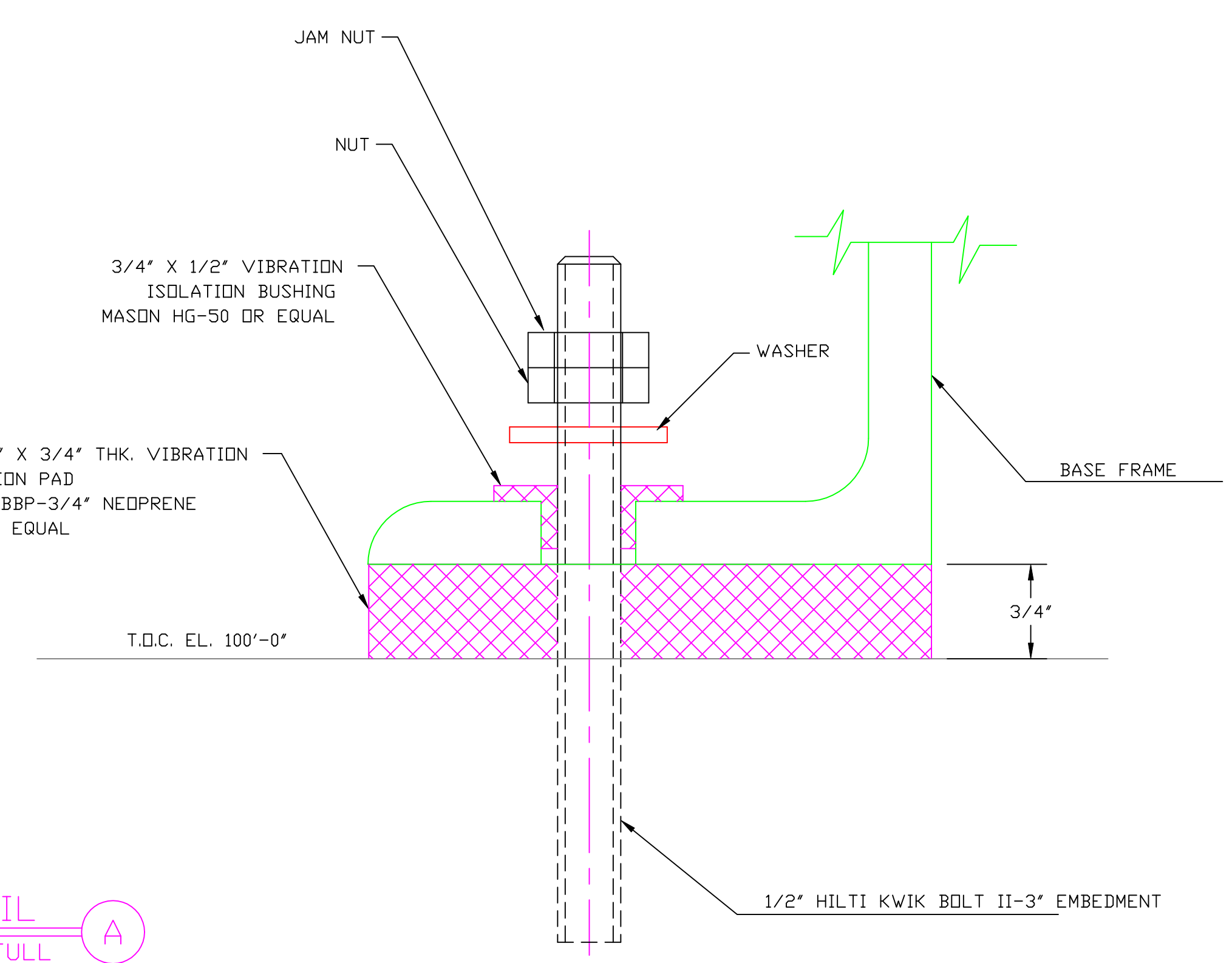
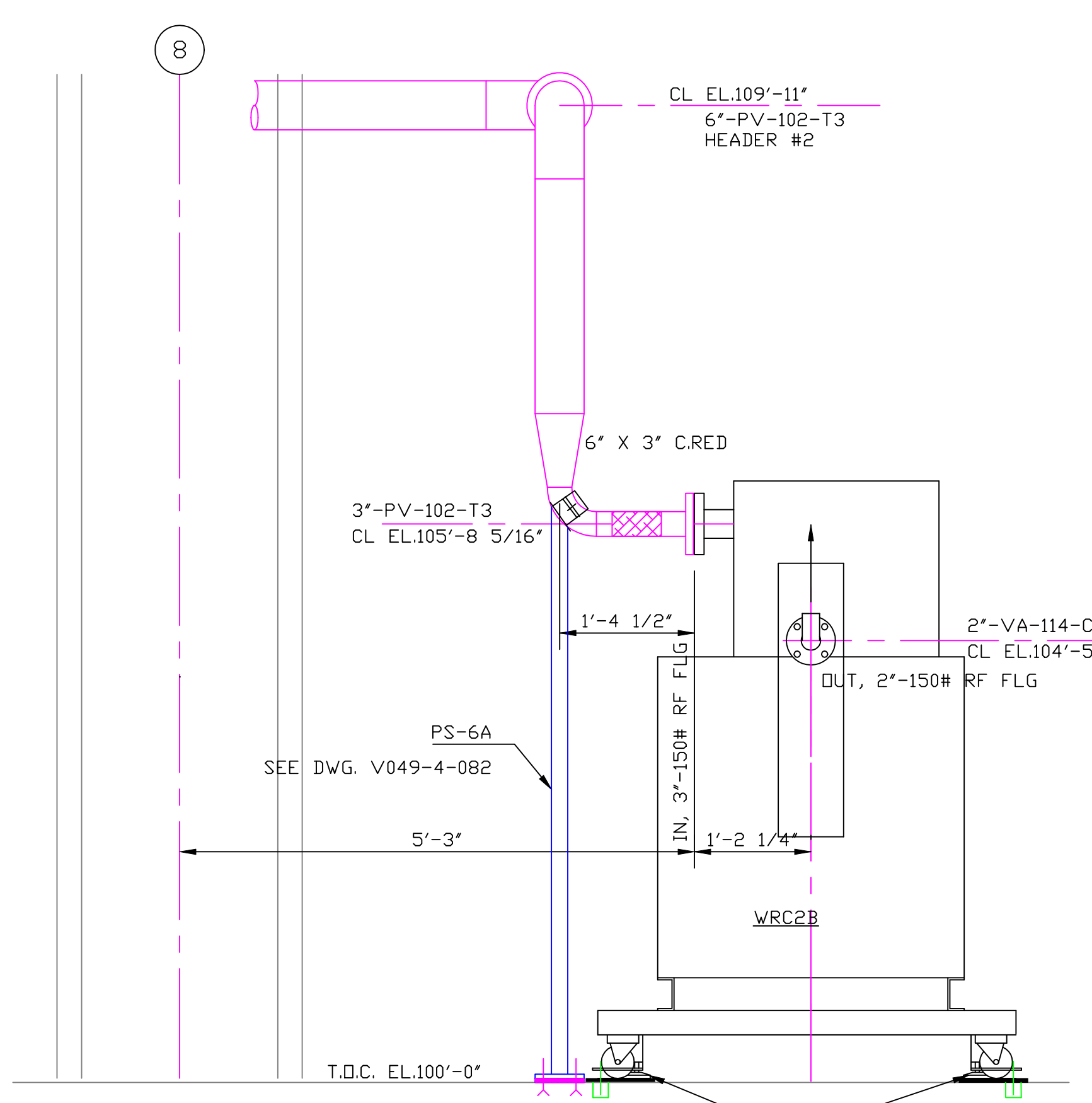


SECTION S
SCALE: 3/4"=1'-0" V049-5-012, SHT.1

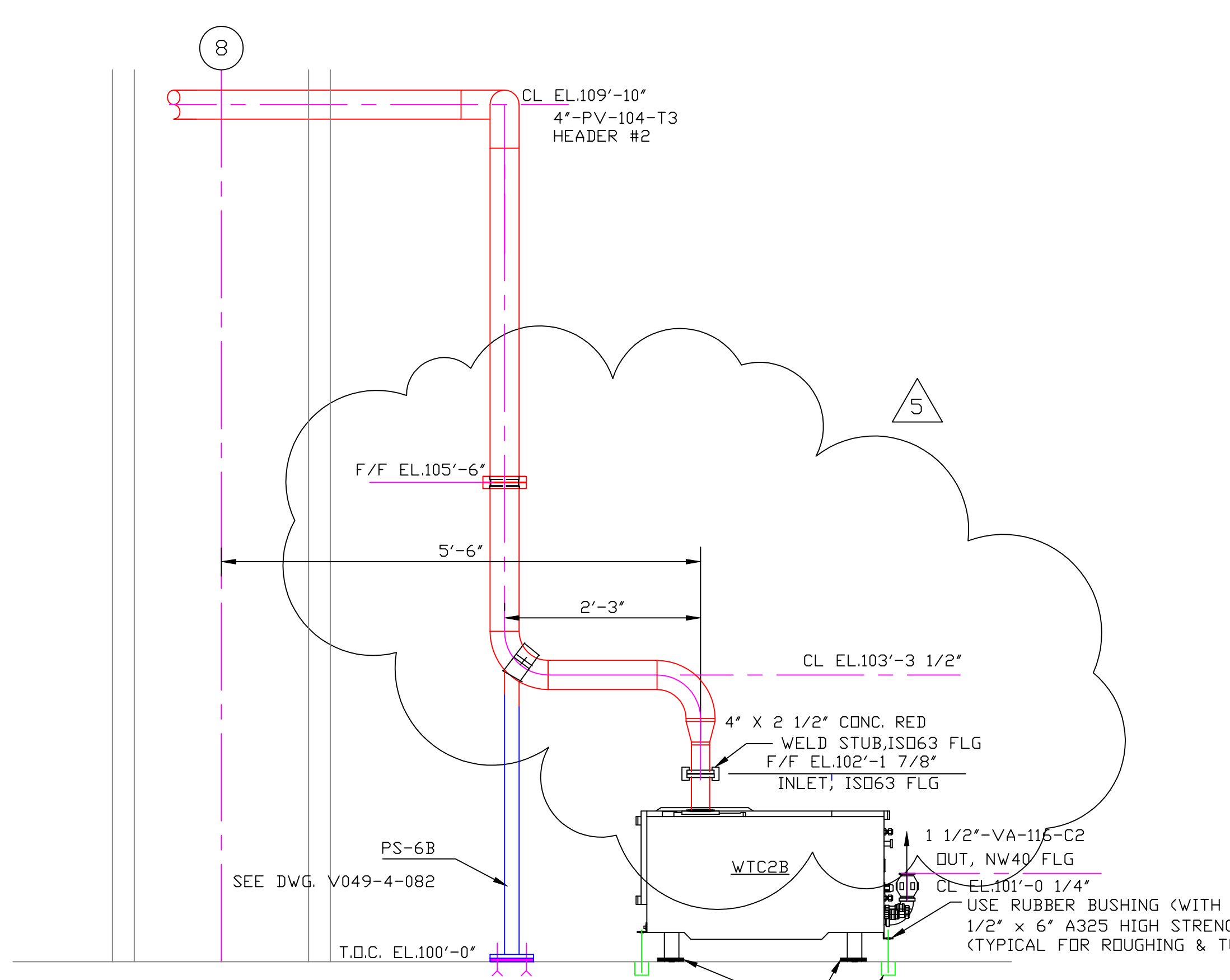


DETAIL A
SCALE: FULL
VIBRATION ISOLATION PAD
TYPICAL

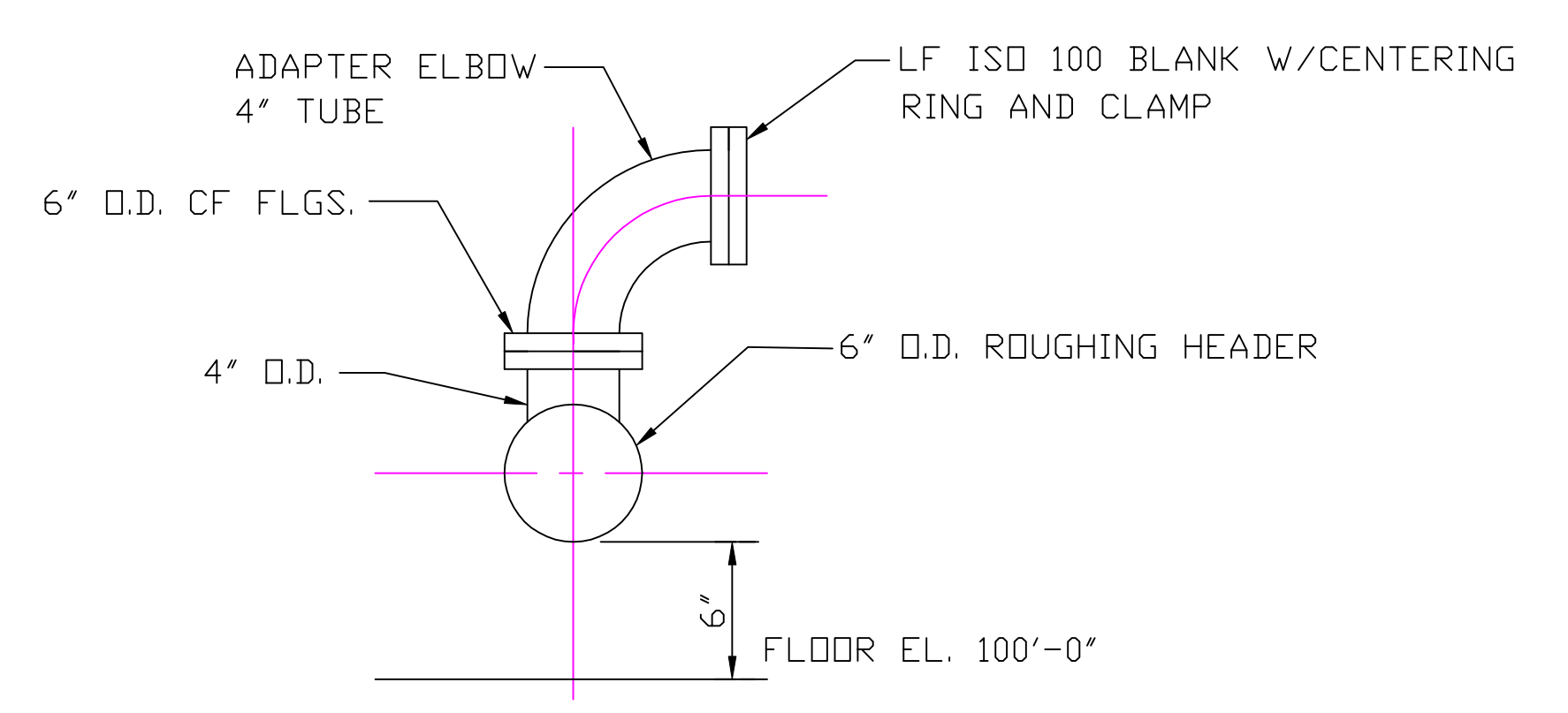
NOTE: THIS TYPE OF VIBRATION PAD ASSEMBLY IS TO BE USED UNDER AIR COMPRESSOR SKID AND ELECTRICAL CABINETS. FOR 200 CFM AIR COMPRESSOR USE 6 BOLTED POINTS + 10 PADS WITHOUT BOLTS. USE 2' x 4' x 3/4" PADS, TYPICAL. CUT BOLT HOLES TO SUIT. ANCHOR BOLT METAL IS NOT TO BE IN CONTACT WITH BASE FRAME METAL. VIBRATION PADS & BUSHINGS & ANCHOR BOLTS BY FIELD CONTRACTOR.



SECTION T
SCALE: 3/4"=1'-0"



SECTION S
SCALE: 3/4"=1'-0"



NOTE: ALL MATERIAL SHOWN BY FIELD CONTRACTOR

DETAIL 4
FROM DWG. V044-5-012, SHT 1 & 2
TYP. 4 PLCS.

NOTES
1) ADJUST PUMP CART LEVELING LEGS TO RAISE CART WHEELS OFF THE FLOOR. THE LEGS ARE TO REST ON THE 1/2" THICK VIBRATION ISOLATION PADS. USE MASON CUPMOUNT TYPE "BM-RED" DURUMETER 50, UNDER LEGS. TYPICAL 4 LEGS PER CART.

CONCRETE ANCHOR-HILTI HVA ADHESIVE ANCHOR WITH HFA INSERTS - 1/2" x 5" EMBEDMENT (BY FIELD CONTRACTOR). TYPICAL FOR ROUGHING & TURBO PUMPS.

PROCESS SYSTEMS INTERNATIONAL INC. 20 WALKUP DR. WESTBOROUGH, MASSACHUSETTS 01581 USA			
PIPING ARRANGEMENT SECTIONS CORNER STATION WASHINGTON LIGO VACUUM EQUIPMENT			
CAD FILE V0495014/5014S2	SIZE D	DWG. NO. V049-5-014	REV. 5
AS NOTED	SHEET 2 OF 3		

Jun 18, 1998 - 15:53:34

EDUCATION VERSION - NOT FOR COMMERCIAL USE