

ELEVATION

DWG. NO.	DESCRIPTION	DWG. NO.	DESCRIPTION
V049-0-016	P & ID RIGHT MID STATION		
V049-0-006	P & ID BOK CRYOPUMP		
V049-5-017	PIPING ARRANGEMENT PLAN RIGHT MID STATION		
V049-5-004	EQUIPMENT ARRANGEMENT RIGHT MID STATION		
100103	LIGD VACUUM EQUIPMENT MID STATION		

UNLESS OTHERWISE SPECIFIED DIMENSIONS ARE IN INCHES
 TOLERANCES
 FRACTIONAL & DECIMAL 0.005" 0.010" 0.015" 0.020" 0.030" 0.040" 0.050" 0.060" 0.070" 0.080" 0.090" 0.100" 0.125" 0.150" 0.175" 0.200" 0.250" 0.300" 0.375" 0.500" 0.625" 0.750" 1.000" 1.250" 1.500" 2.000" 2.500" 3.000" 4.000" 5.000" 6.000" 8.000" 10.000"
 DO NOT SCALE THIS DRAWING
 USED ON: _____
 NEXT ASS'Y: _____

REV	DESCRIPTION	CHKD	DRWN	DATE	BY
3	REISSUED FOR CONSTRUCTION AS NOTED			06.06.97	0491
2	ISSUED FOR CONSTRUCTION			04.28.97	0440
1	ISSUED FOR FIR UPDATE & BID			12/23/96	0356
0	ISSUED FOR FIR			4/30/96	0133

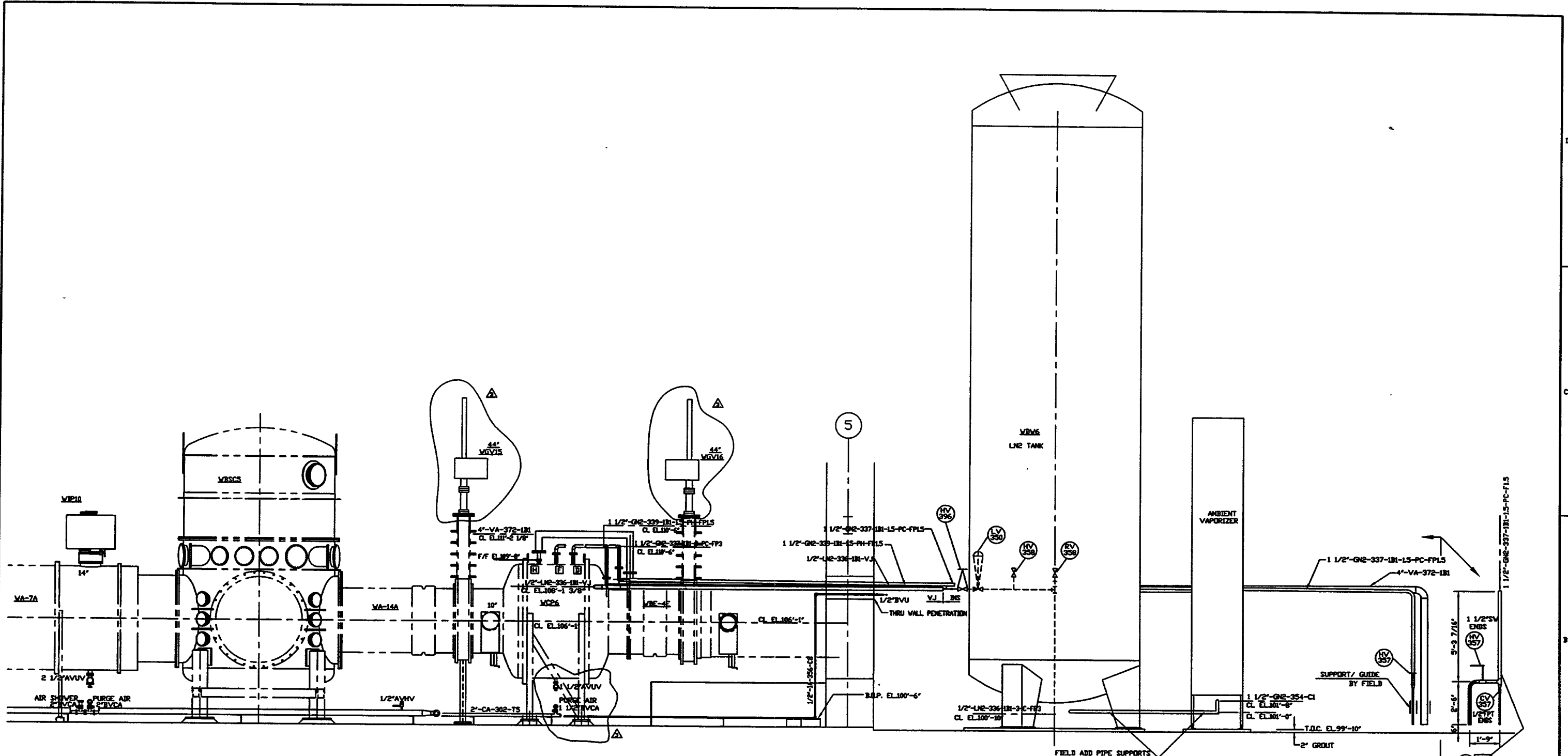
PROCESS SYSTEMS INTERNATIONAL INC.
 30 WILKIN DR. WESTBOROUGH, MASSACHUSETTS 01581 USA

PIPING ARRG'T - ELEVATION (LEFT)
 RIGHT MID STATION
 WASHINGTON SITE
 LIGD VACUUM EQUIPMENT

DWG FILE: V0495018/3018S1
 SHEET: D
 REV: 3


SCALE: 3/8"=1'-0"
 SHEET: 1 OF 2

Jun 13, 1997 - 12:21:51



ELEVATION

SEE SHEET 1 FOR REVISIONS

 PROCESS SYSTEMS INTERNATIONAL INC. 20 WALKUP DR. WESTBOROUGH, MASSACHUSETTS 01581 USA			
PIPING ARRGT - ELEVATION (RIGHT) RIGHT MID STATION WASHINGTON SITE LIGO VACUUM EQUIPMENT			
CAD FILE	SIZE	DWG. NO.	REV.
V0495018/5018S2	D	V049-5-018	3
SCALE	SHEET		2 OF 2
3/8"=1'-0"			

JAN 13, 1997 - 182603