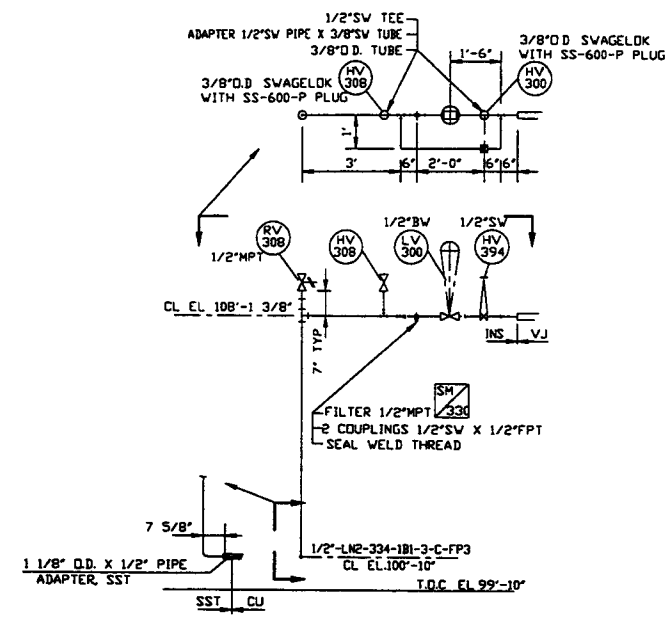
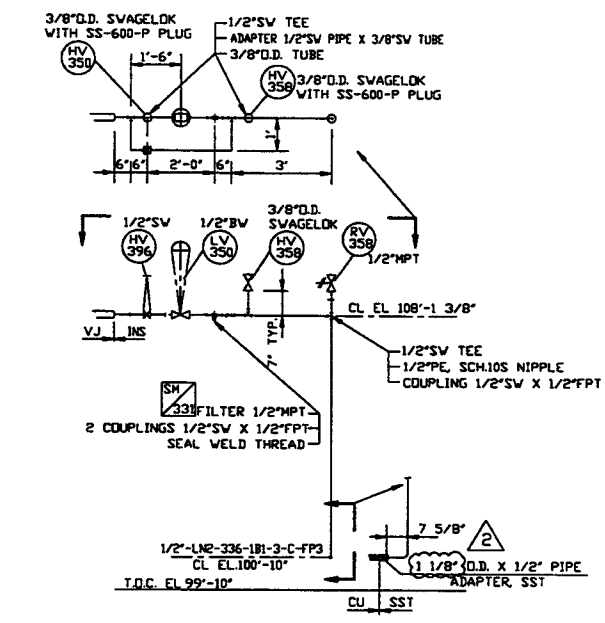


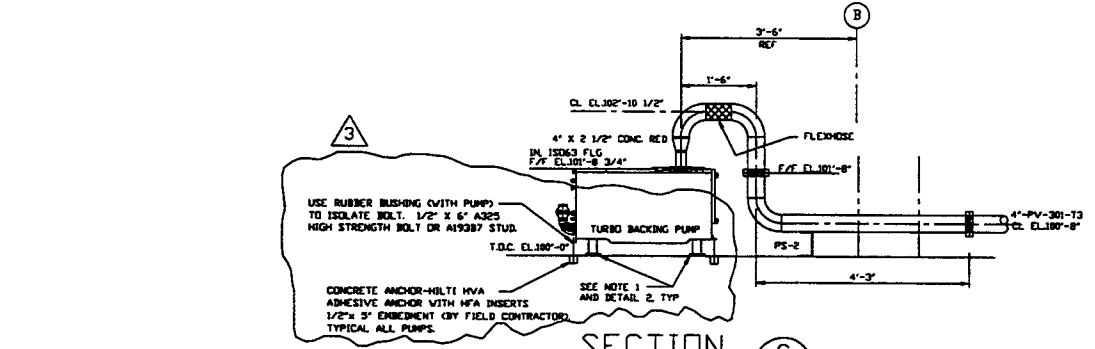
NOTES
 1) ADJUST PUMP CART LEVELING LEGS TO RAISE CART WHEELS OFF THE FLOOR. THE LEGS ARE TO REST ON THE 1/2" THICK VIBRATION ISOLATION PADS
 USE MASON CUPMOUNT TYPE 'BM-RED' DUROMETER 50, UNDER LEGS.
 TYPICAL 4 LEGS PER CART.



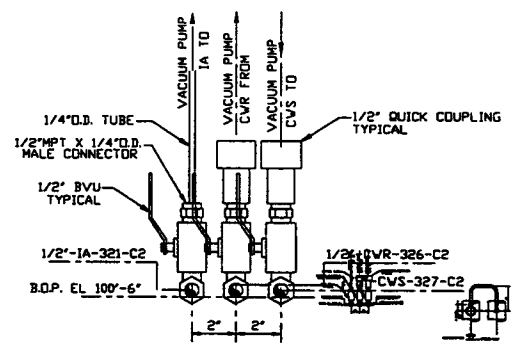
SECTION B
 SCALE: 3/8"=1'-0" V049-5-017 SHT.2



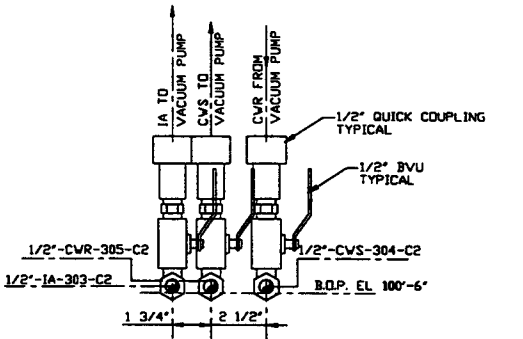
SECTION F
 SCALE: 3/8"=1'-0" V049-5-017 SHT.3



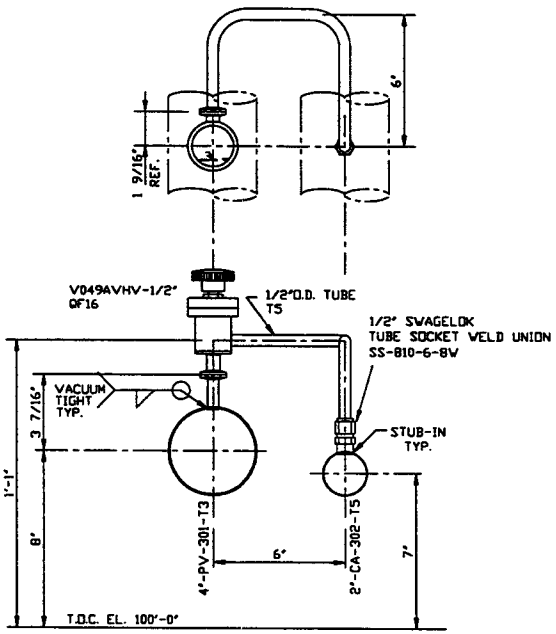
SECTION C
 SCALE: 3/4"=1'-0" V049-5-017, SHT.1



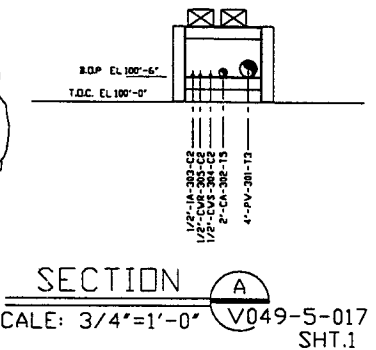
DETAIL 4
 SCALE: 3"=1'-0" V049-5-017, SHT.1



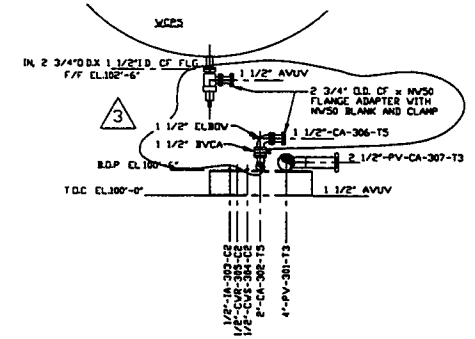
DETAIL 1
 SCALE: 3"=1'-0" V049-5-017, SHT.1



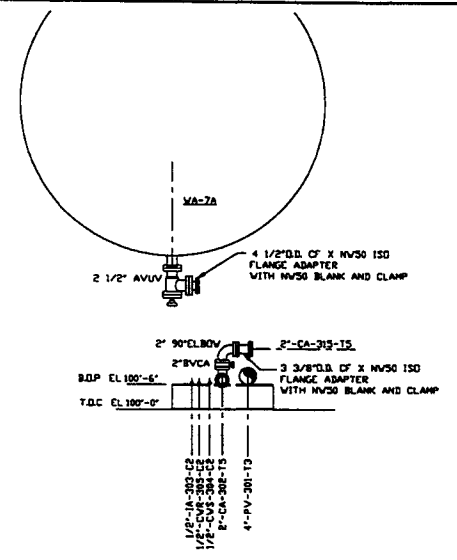
DETAIL 3
 SCALE: 3"=1'-0" V049-5-017, SHT.1



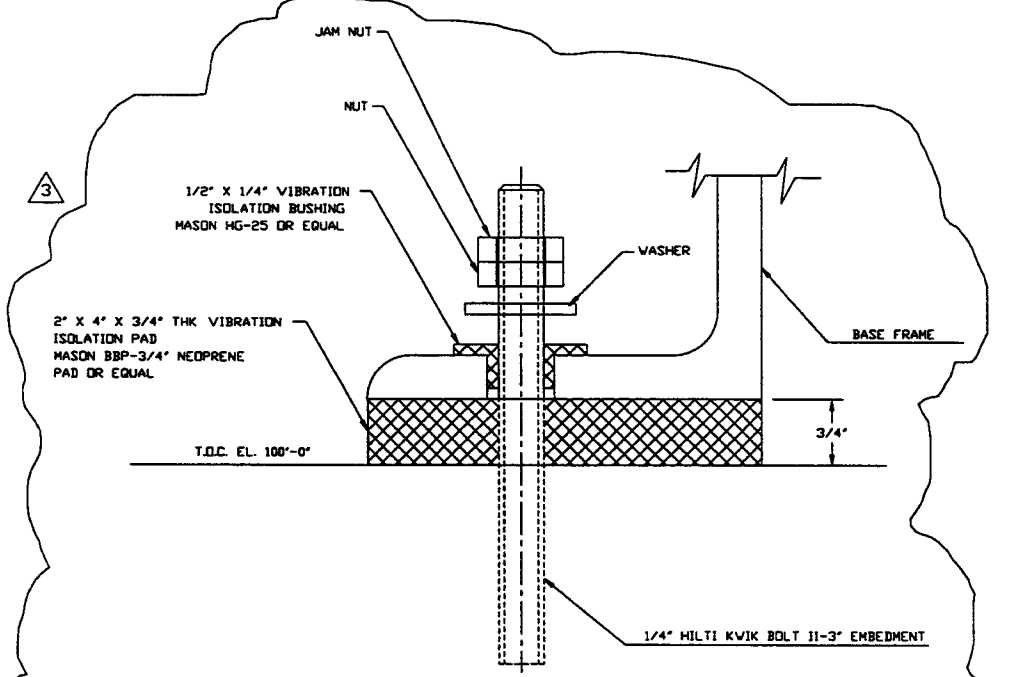
SECTION A
 SCALE: 3/4"=1'-0" V049-5-017 SHT.1



SECTION D
 SCALE: 3/4"=1'-0" V049-5-017 SHT.1
 (PURGE LINE IS IDENTICAL FOR WCP6)



SECTION E
 SCALE: 3/4"=1'-0" V049-5-017 SHT.1



DETAIL 2
 SCALE: FULL V049-5-017, SHT.4

NOTE: THIS TYPE OF VIBRATION PAD ASSEMBLY IS TO BE USED UNDER AIR COMPRESSOR SKID AND ELECTRICAL CABINETS. FOR 50 CFM AIR COMPRESSOR USE 4 BOLTED POINTS. USE 2" X 4" X 3/4" PADS, TYPICAL. CUT BOLT HOLES TO SUIT. ANCHOR BOLT METAL IS NOT TO BE IN CONTACT WITH BASE FRAME METAL. VIBRATION PADS & BUSHINGS & ANCHOR BOLTS BY FIELD CONTRACTOR.

PROPRIETARY AND CONFIDENTIAL
 THIS DOCUMENT CONTAINS PROPRIETARY INFORMATION BELONGING TO PROCESS SYSTEMS INTERNATIONAL, INC. OR ITS AFFILIATED COMPANIES AND SHALL BE USED ONLY FOR THE PURPOSE FOR WHICH IT WAS SUPPLIED. IT SHALL NOT BE COPIED, REPRODUCED OR OTHERWISE USED, NOR SHALL SUCH INFORMATION BE FURNISHED BY WHOLE OR IN PART TO OTHERS EXCEPT IN ACCORDANCE WITH THE TERMS OF ANY AGREEMENT UNDER WHICH IT WAS SUPPLIED OR WITH THE PRIOR WRITTEN CONSENT OF PROCESS SYSTEMS INTERNATIONAL, INC. AND SHALL BE RETURNED UPON REQUEST.

DWG. NO.	DESCRIPTION	DWG. NO.	DESCRIPTION
V049-5-017	PIPING ARRANGEMENT PLAN RIGHT MID STATION		
V049-5-004	EQUIPMENT ARRANGEMENT RIGHT MID STATION		
110103	LIGO VACUUM EQUIPMENT MID STATION		

UNLESS OTHERWISE SPECIFIED DIMENSIONS ARE IN INCHES
 TOLERANCES:
 FRACTIONS: ±
 ANGULAR: 30°-30' BEND 42°
 TWO PLACE DECIMAL: ± .01
 THREE PLACE DECIMAL: ± .005
 FINISHED SURFACE: RNS
 BREAK CORNERS: R1
 REMOVE ALL BURRS

DO NOT SCALE THIS DRAWING
 USED ON:
 NEXT ASS'Y:

REV	DESCRIPTION	CHKD	DRWN	DATE	DEDR
3	ISSUED FOR CONSTRUCTION			06/06/97	0491
2	ISSUED FOR CONSTRUCTION			04/28/97	0440
1	ISSUED FOR FDR UPDATE & BID			11/21/96	0256
0	ISSUED FOR FDR			4/30/96	0153

PROCESS SYSTEMS INTERNATIONAL, INC.
 20 WALDEN DR. WESTBOROUGH, MASSACHUSETTS 01581 USA

PIPING ARRGT - SECTIONS & DETAILS
 RIGHT MID STATION
 WASHINGTON SITE
 LIGO VACUUM EQUIPMENT

CAD FILE: V0495019
 SIZE: D
 DWG NO: V049-5-019
 REV: 3

SCALE: AS NOTED
 SHEET: 1 OF 1