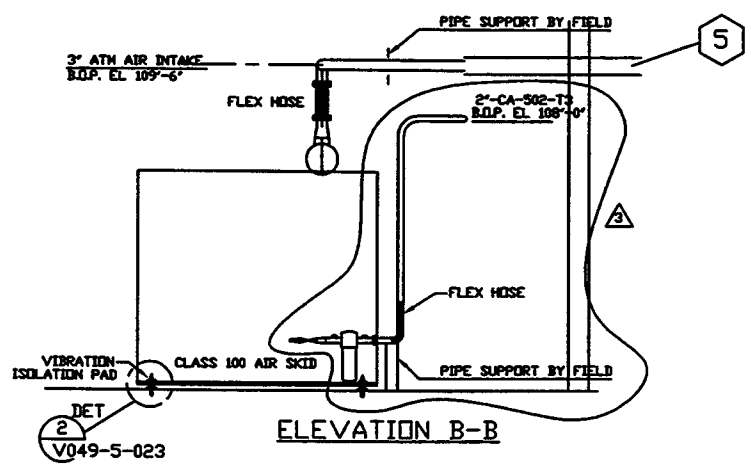
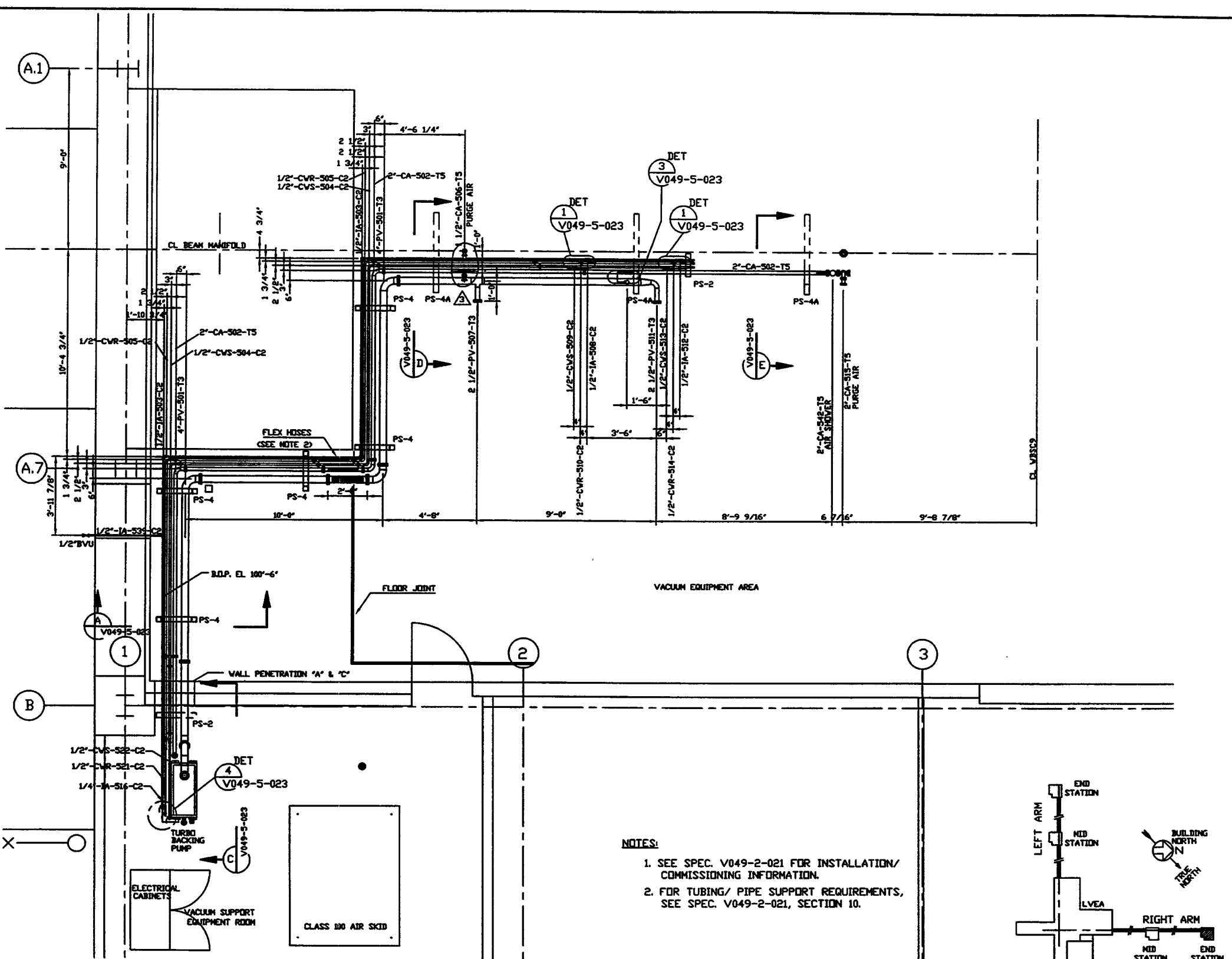


PLAN @ EL 110'-0"

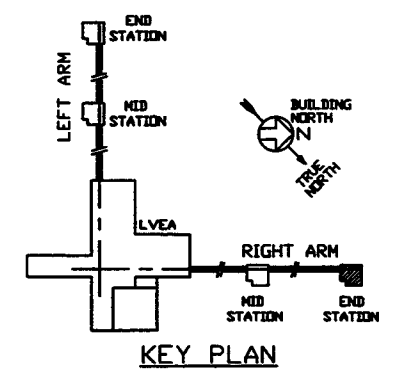


ELEVATION B-B



PLAN @ FLOOR

- NOTES:
- SEE SPEC. V049-2-021 FOR INSTALLATION/ COMMISSIONING INFORMATION.
 - FOR TUBING/ PIPE SUPPORT REQUIREMENTS, SEE SPEC. V049-2-021, SECTION 10.



KEY PLAN

PROPRIETARY AND CONFIDENTIAL
THIS DOCUMENT CONTAINS PROPRIETARY INFORMATION BELONGING TO PROCESS SYSTEMS INTERNATIONAL, INC. OR ITS AFFILIATED COMPANIES AND SHALL BE USED ONLY FOR THE PURPOSE FOR WHICH IT WAS SUPPLIED. IT SHALL NOT BE COPIED, REPRODUCED OR OTHERWISE USED, NOR SHALL SUCH INFORMATION BE FURNISHED IN WHOLE OR IN PART TO OTHERS EXCEPT IN ACCORDANCE WITH THE TERMS OF ANY AGREEMENT UNDER WHICH IT WAS SUPPLIED OR WITH THE PRIOR WRITTEN CONSENT OF PROCESS SYSTEMS INTERNATIONAL, INC. AND SHALL BE RETURNED UPON REQUEST.

DWG. NO.	DESCRIPTION	DWG. NO.	DESCRIPTION
V049-0-017	P & ID RIGHT END STATION	V049-0-006	P & ID BOX CRYOPUMP
V049-5-005	EQUIPMENT ARRANGEMENT RIGHT END STATION	1101102	LIGO VACUUM EQUIPMENT END STATION

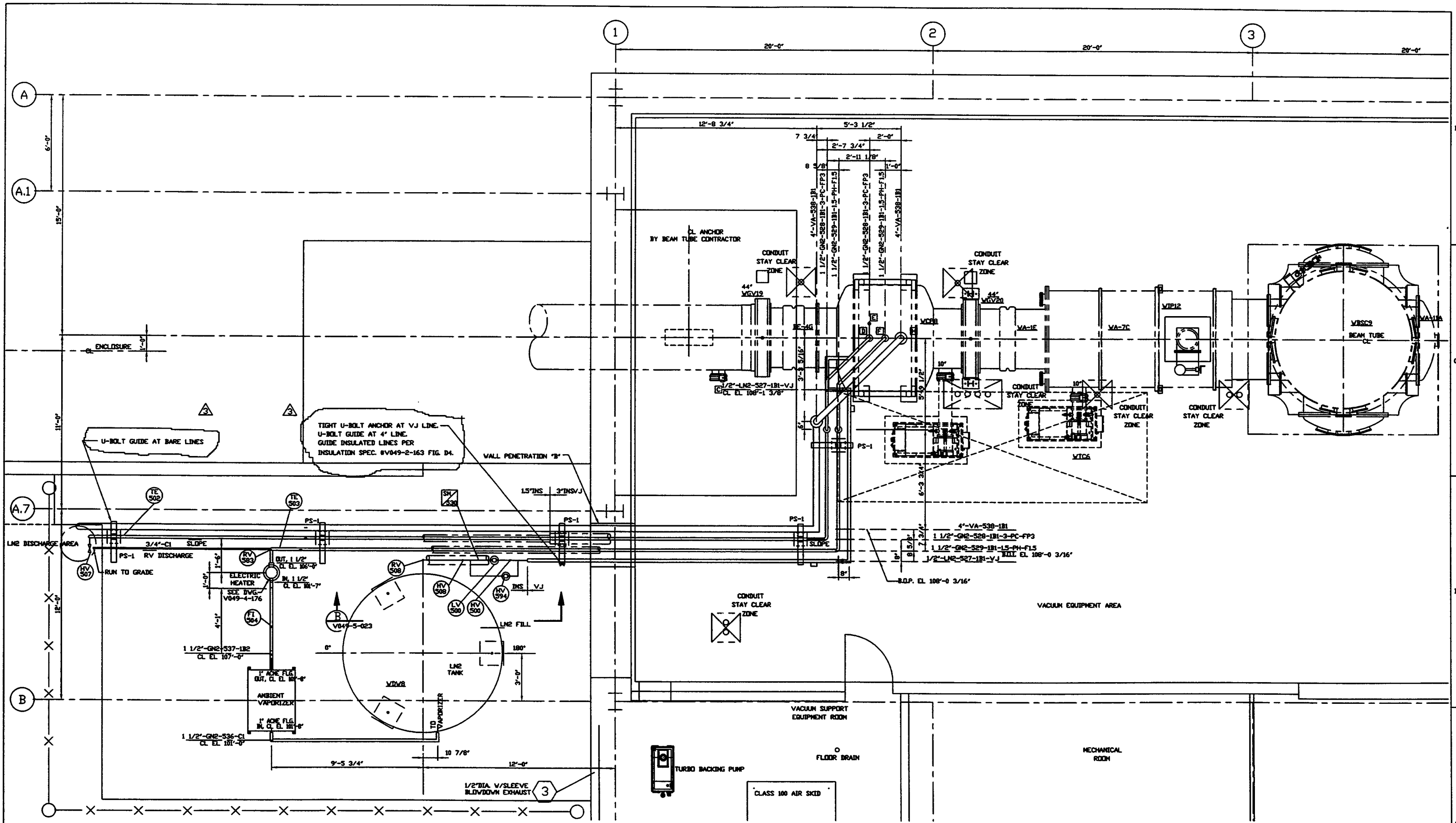
UNLESS OTHERWISE SPECIFIED DIMENSIONS ARE IN INCHES
WELDED: FRACTURED & REWORKED AS SHOWN IN THIS PLACE, REWORK & FINISHED SURFACE SHALL BEAK FINISH TO ABOVE ALL DIMS
DO NOT SCALE THIS DRAWING
USED ON:
NEXT ASS'Y:

REV	DESCRIPTION	CHKD	DRWN	DATE	BDMA
3	REISSUED FOR CONSTRUCTION AS NOTED			06/06/97	0491
2	ISSUED FOR CONSTRUCTION	DRW	RDC	REC	RH
1	ISSUED FOR FOR UPDATE & BID	DRW	RDC	REC	RH
0	ISSUED FOR FOR	DRW	RDC	REC	GV
P1	PRELIMINARY DESIGN				

PROCESS SYSTEMS INTERNATIONAL, INC.
20 WALKUP DR. WESTBOROUGH, MASSACHUSETTS 01581 USA

PIPING ARRANGEMENT, PLAN
RIGHT END STATION
WASHINGTON SITE
LIGO VACUUM EQUIPMENT

DWG. NO. V049-5-021
SCALE 3/8"=1'-0"
SHEET 1 OF 2



PLAN @ EL. 112'-6"

PROCESS SYSTEMS INTERNATIONAL INC. 20 WALKUP DR. WESTBOROUGH, MASSACHUSETTS 01581 USA			
PIPING ARRANGEMENT PLAN RIGHT END STATION WASHINGTON SITE LIGO VACUUM EQUIPMENT			
CAD FILE	SIZE	DWG. NO.	REV.
V0495021/502152	D	V049-5-021	3
SCALE 3/8"=1'-0"	SHEET 2 OF 2		

20 20 1997 - 103.053