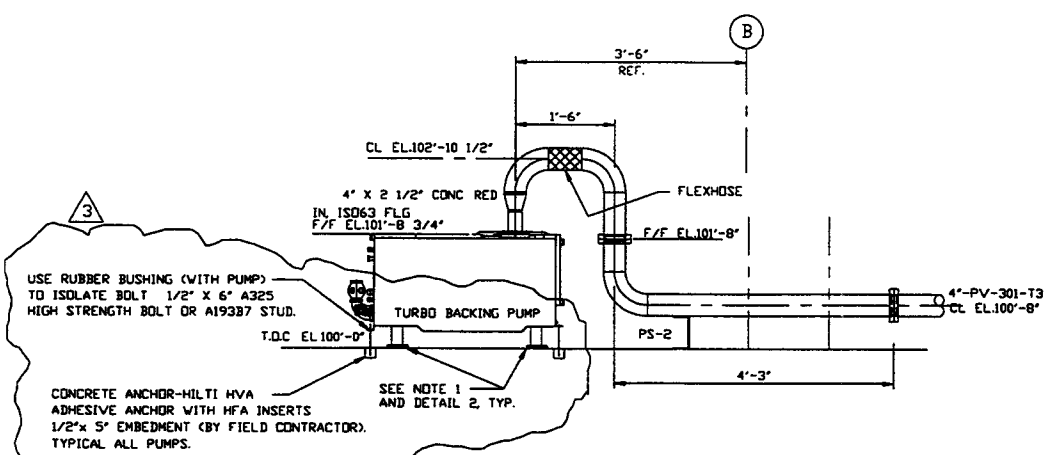
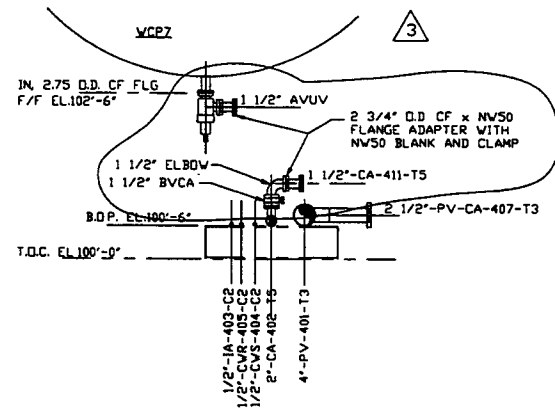


SECTION B
SCALE: 3/8"=1'-0" V049-5-030, SHT2

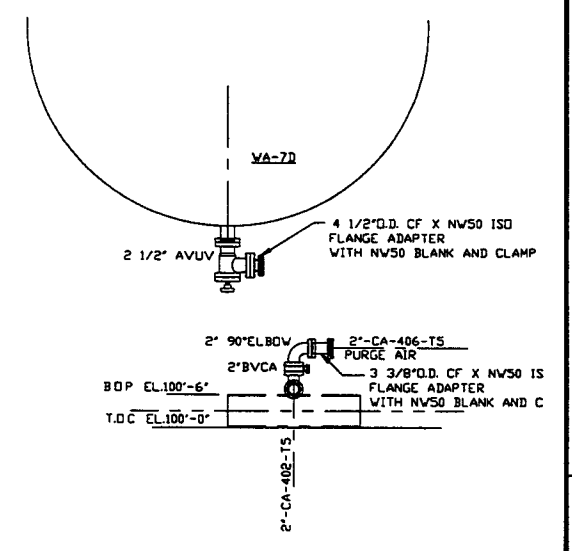
NOTES
1) ADJUST PUMP CART LEVELING LEGS TO RAISE CART WHEELS OFF THE FLOOR. THE LEGS ARE TO REST ON THE 1/2" THICK VIBRATION ISOLATION PADS. USE MASON CUPMOUNT TYPE 'BM-RED' DUROMETER 50, UNDER LEGS. TYPICAL 4 LEGS PER CART.



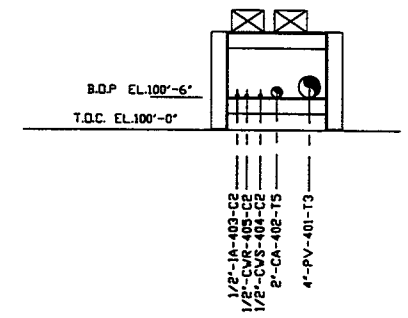
SECTION C
SCALE: 3/4"=1'-0" V049-5-030, SHT1



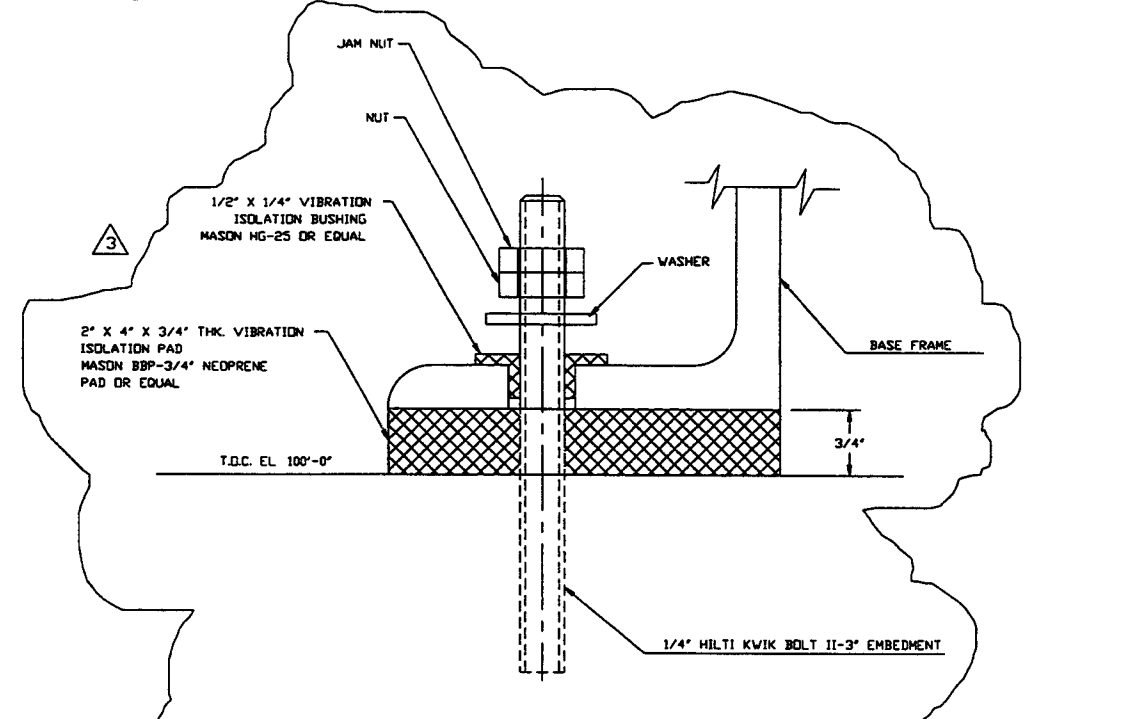
SECTION D
SCALE: 3/4"=1'-0" V049-5-030, SHT1



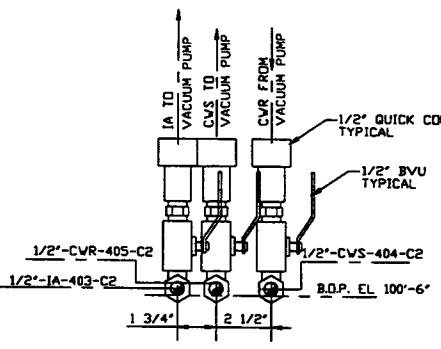
SECTION E
SCALE: 3/4"=1'-0" V049-5-030, SHT1



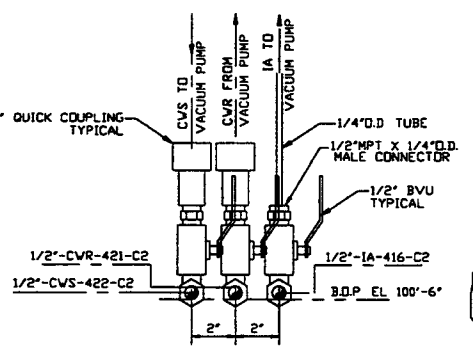
SECTION A
SCALE: 3/4"=1'-0" V049-5-030, SHT1



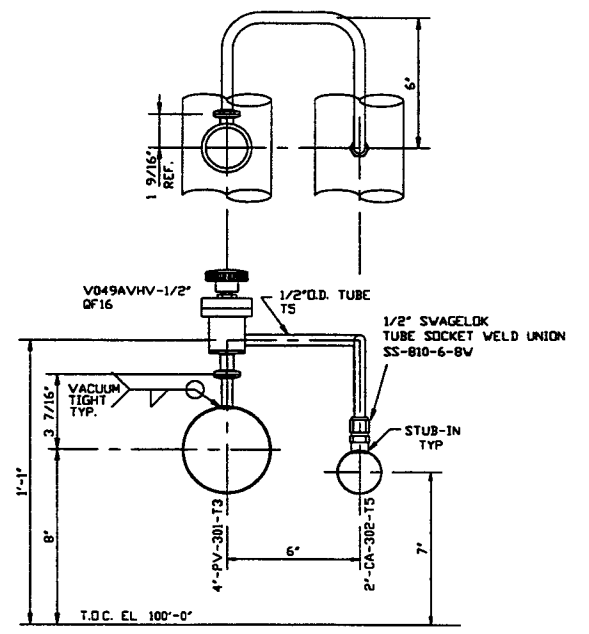
VIBRATION ISOLATION PAD TYPICAL
NOTE: THIS TYPE OF VIBRATION PAD ASSEMBLY IS TO BE USED UNDER AIR COMPRESSOR SKID AND ELECTRICAL CABINETS. FOR 50 CFM AIR COMPRESSOR USE 4 BOLTED POINTS. USE 2" X 4" X 3/4" PADS, TYPICAL. CUT BOLT HOLES TO SUIT. ANCHOR BOLT METAL IS NOT TO BE IN CONTACT WITH BASE FRAME METAL. VIBRATION PADS & BUSHINGS & ANCHOR BOLTS BY FIELD CONTRACTOR.



DETAIL 1
SCALE: 3"=1'-0" V049-5-030, SHT1



DETAIL 4
SCALE: 3"=1'-0" V049-5-030, SHT1



DETAIL 3
SCALE: 3"=1'-0" V049-5-030, SHT1

DWG. NO.	DESCRIPTION	DWG. NO.	DESCRIPTION
V049-5-030	PIPING ARRANGEMENT PLAN LEFT END STATION		
V049-5-007	EQUIPMENT ARRANGEMENT LEFT END STATION		
1101102	LIGO VACUUM EQUIPMENT END STATION		

UNLESS OTHERWISE SPECIFIED	REVISION	DATE	BY	CHKD	DRWN	DATE	DEC#
3	REISSUED FOR CONSTRUCTION AS NOTED	06/06/97	PV				0491
2	ISSUED FOR CONSTRUCTION	04/28/97	DMV	RDC	REC	RM	0440
1	ISSUED FOR UPDATE & BID	12/23/96	DMV	RDC	REC	RM	0356
0	ISSUED FOR FDR	4/30/96	DMV	RDC	REC	GW	0153
P1	PRELIMINARY DESIGN						

DO NOT SCALE THIS DRAWING	REV	DESCRIPTION	CHKD	DRWN	DATE	DEC#
USED ON:						
NEXT ASS'Y:						

PROCESS SYSTEMS INTERNATIONAL, INC.
20 WALKUP DR. WESTBOROUGH, MASSACHUSETTS 01581 USA

PIPING ARRANGEMENT, SECTIONS LEFT END STATION WASHINGTON SITE LIGO VACUUM EQUIPMENT

CAR FILE: V0495032
SIZE: D
DWG. NO.: V049-5-032
REV: 3

SCALE: AS NOTED
SHEET: 1 OF 1