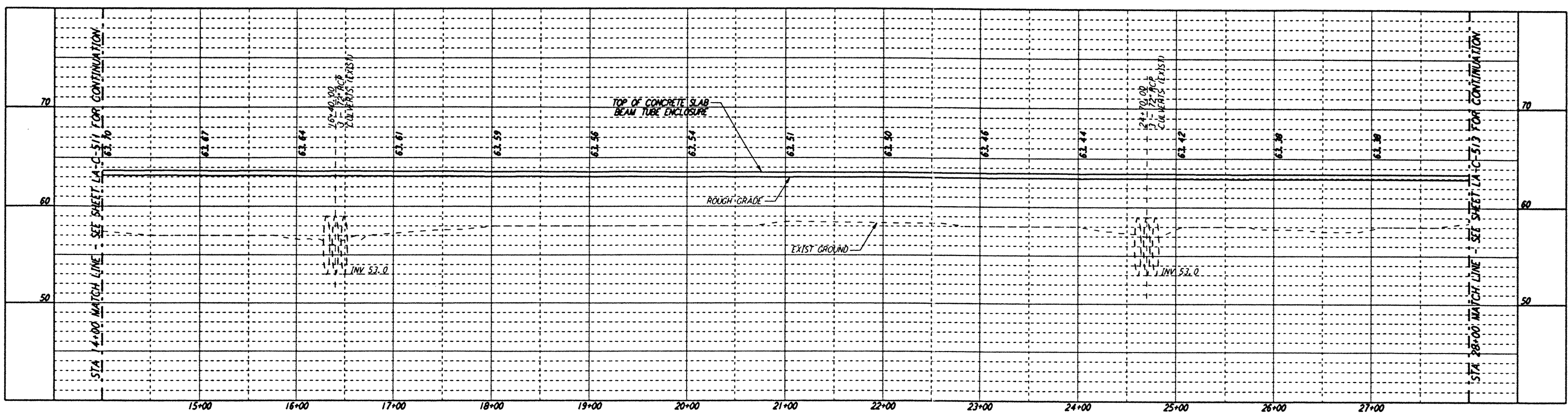
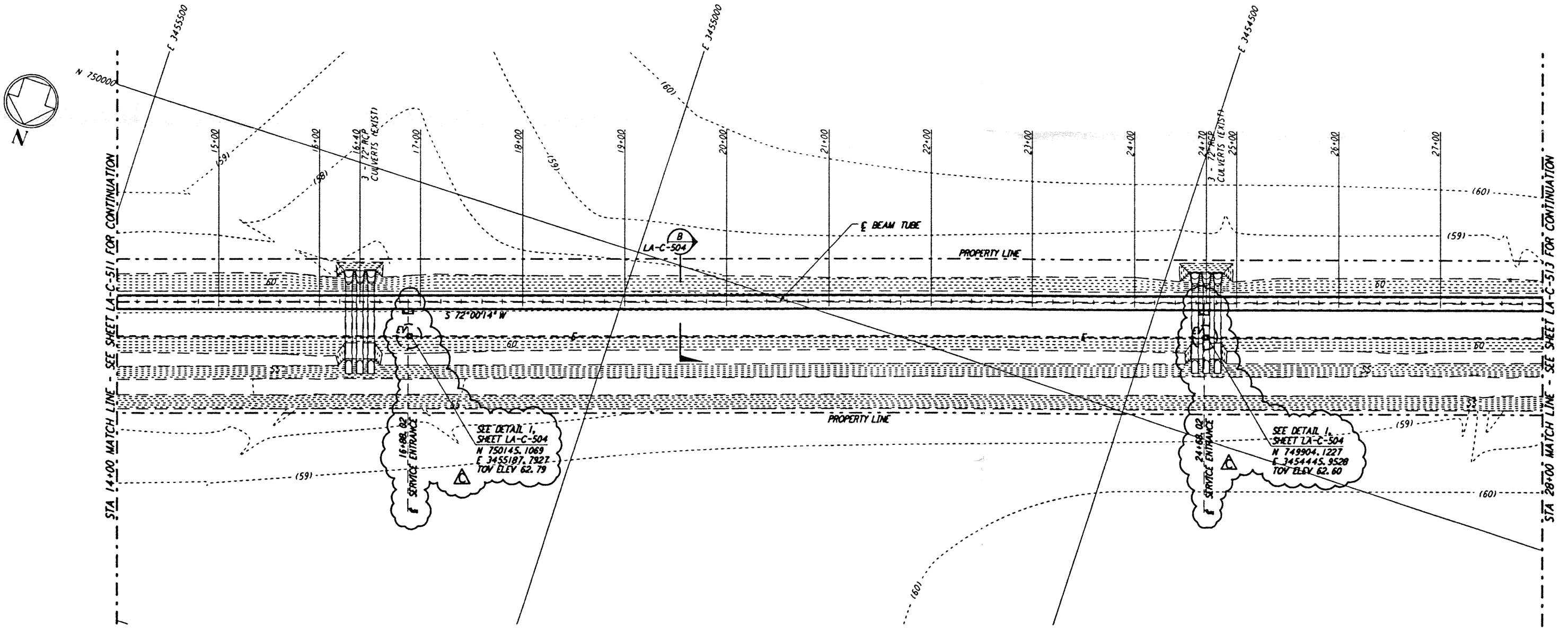


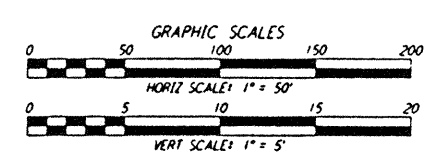
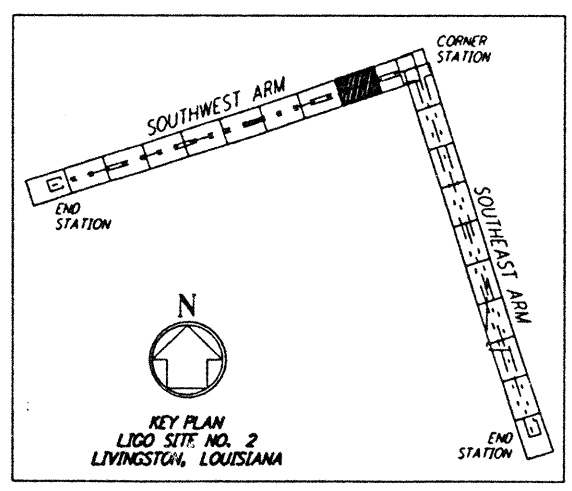
- NOTES:**
- SEE SHEET LA-C-502 FOR GENERAL NOTES, LEGEND AND ABBREVIATIONS.
  - SEE SHEET LA-C-504 FOR TYPICAL SECTIONS AND DETAILS.



**PROFILE**  
 SCALES: HORIZ: 1" = 50'  
 VERT: 1" = 5'



**PLAN**  
 SCALE: 1" = 50'



This document and the design it covers are the property of PARSONS. They are loaned only with the borrower's expressed written agreement that they will not be reproduced, copied, loaned, exhibited, or used in any other way, except by written consent from PARSONS to the borrower.

NO.	DATE	BY	CHKD	ENGR	PROJ	DESCRIPTION
C	9/27/96	WRB	ML	JB	TDM	BID ADDENDUM NO. 3
B	9/10/96	WRB	ML	JB	TDM	BID ADDENDUM NO. 2
A	6/28/96	WRB	ML	JB	TDM	FINAL DESIGN REVIEW

DRAWN	WRB	6/24/96
CHECKED		
ENGINEER		
PROJ		

**PARSONS**  
 100 WEST WALNUT STREET  
 PASADENA, CALIFORNIA

**LIGO**  
 CALIFORNIA INSTITUTE OF TECHNOLOGY  
 MASSACHUSETTS INSTITUTE OF TECHNOLOGY

**LASER INTERFEROMETER  
 GRAVITATIONAL-WAVE OBSERVATORY  
 BEAM TUBE ENCLOSURE - LIVINGSTON, LA**

TITLE	CIVIL	SCALE	AS NOTED	PROJECT NUMBER	8094
	SOUTHWEST ARM PLAN AND PROFILE STA 14+00 TO STA 28+00				
				<b>LA-C-512</b>	