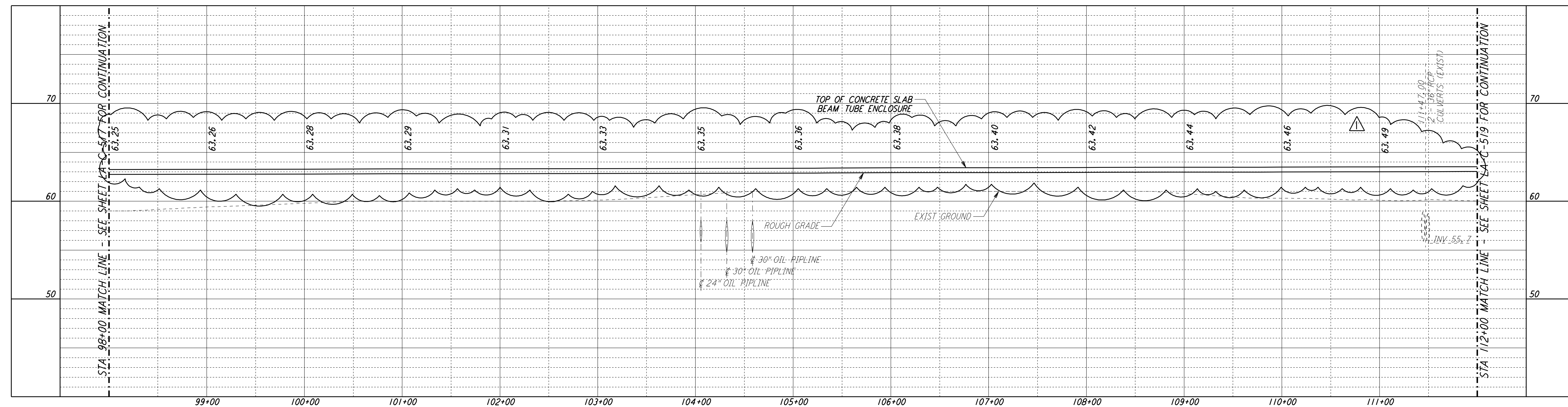
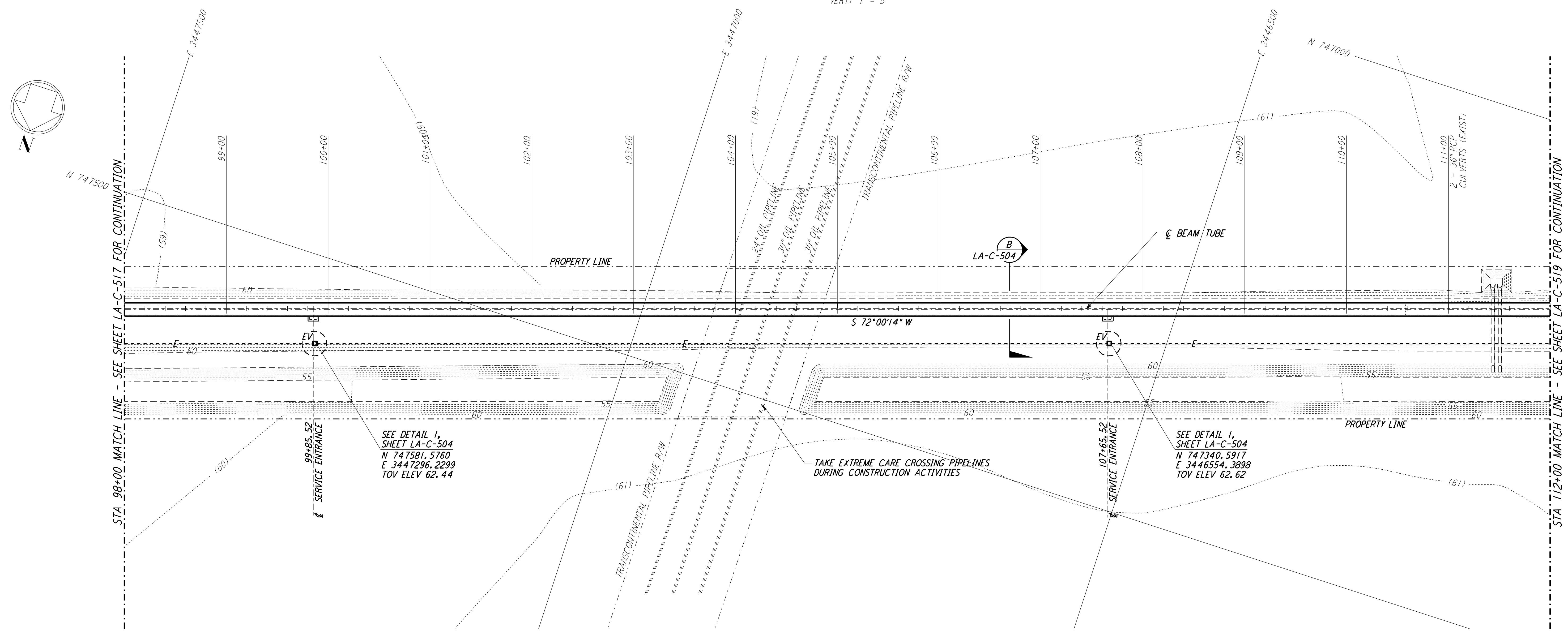


NOTES:

1. SEE SHEET LA-C-502 FOR GENERAL NOTES, LEGEND AND ABBREVIATIONS.
2. SEE SHEET LA-C-504 FOR TYPICAL SECTIONS AND DETAILS.

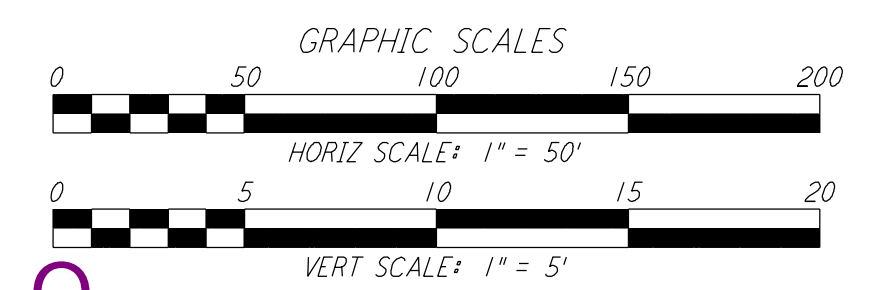
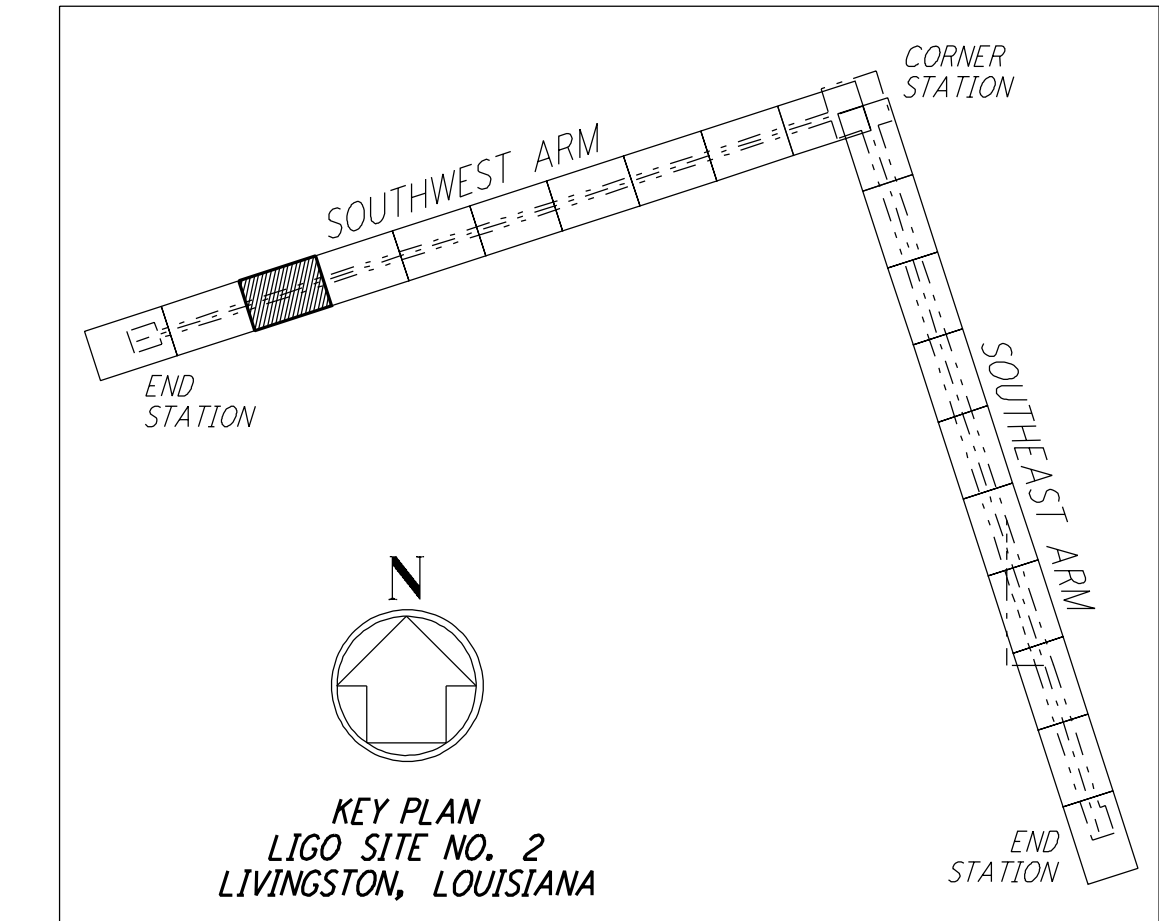


PROFILE
 SCALES: HORIZ: 1" = 50'
 VERT: 1" = 5'



PLAN
 SCALE: 1" = 50'

NOTE:
 LIGO SOUTHWEST ARM CROSSING OF TRANSCONTINENTAL PIPELINE R/W OCCURS WITHIN LIVINGSTON PARISH, LOUISIANA, TOWNSHIP 6 SOUTH - RANGE 4 EAST, SECTION 4.



This document and the design it covers are the property of PARSONS. They are loaned only with the borrower's expressed written agreement that they will not be reproduced, copied, loaned, exhibited, or used in any other way, except by written consent from PARSONS to the borrower.

NO.	DATE	BY	CHKD	ENGR	PROJ	DESCRIPTION
1	2-3-97	WRB				REVISED PROFILE ELEVATIONS

ISSUED FOR CONSTRUCTION		
DRAWN	WRB	11-15-96
CHECKED	ML	11-15-96
ENGINEER	JB	11-15-96
PROJ	TDM	11-15-96

PARSONS
 100 WEST WALNUT STREET
 PASADENA, CALIFORNIA

LIGO
 CALIFORNIA INSTITUTE OF TECHNOLOGY
 MASSACHUSETTS INSTITUTE OF TECHNOLOGY

LIGO-D961272-01-0

LASER INTERFEROMETER
 GRAVITATIONAL-WAVE OBSERVATORY
 BEAM TUBE ENCLOSURE - LIVINGSTON, LA

TITLE	SCALE	CONTRACT NUMBER	PROJECT NUMBER
CIVIL	AS NOTED	PP150969	8094
SHEET NUMBER	REVISIONS		
LA-C-518			