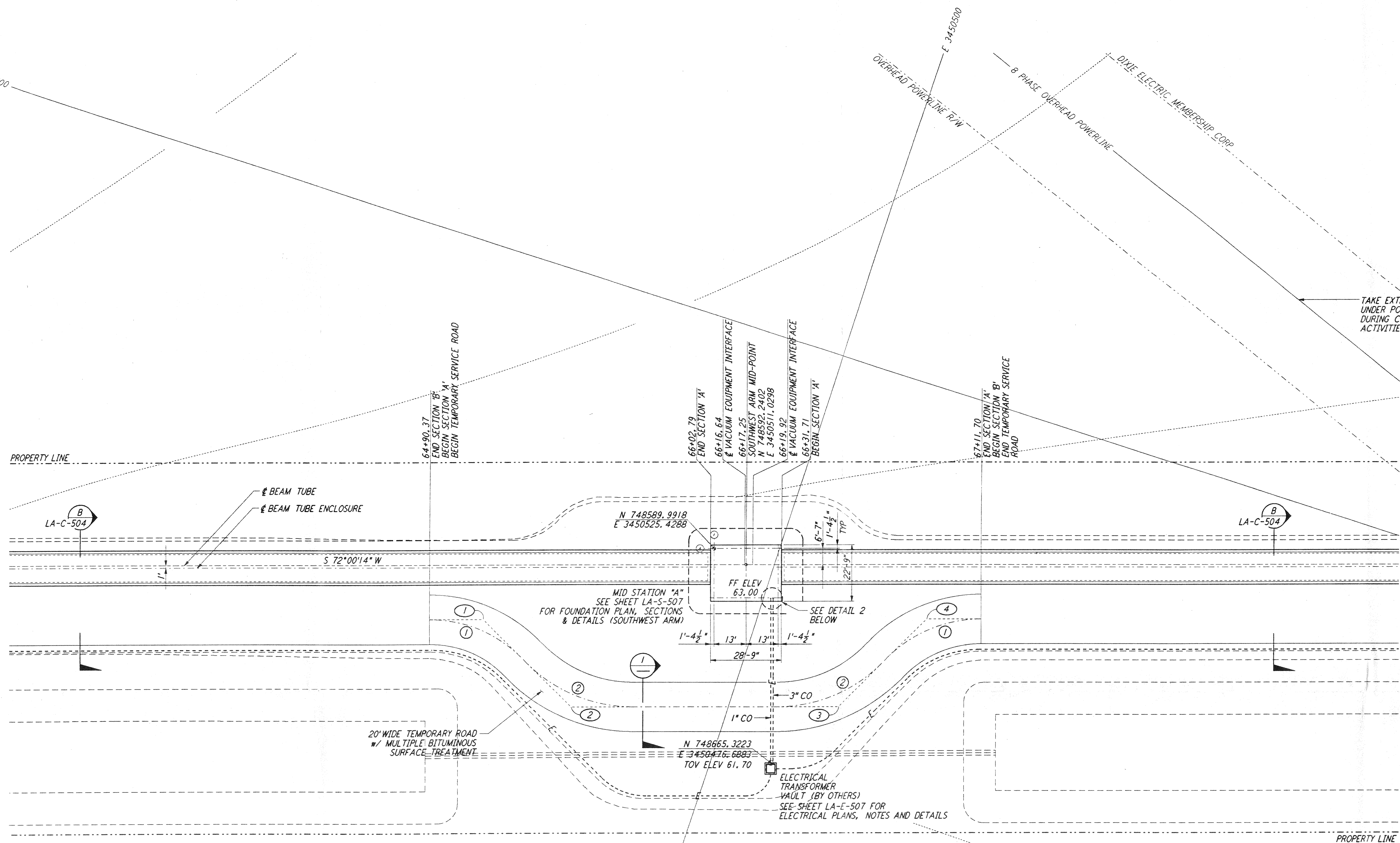


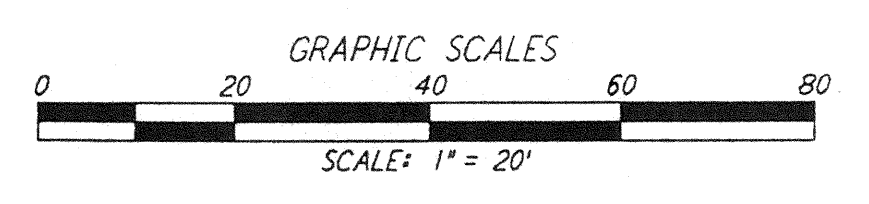
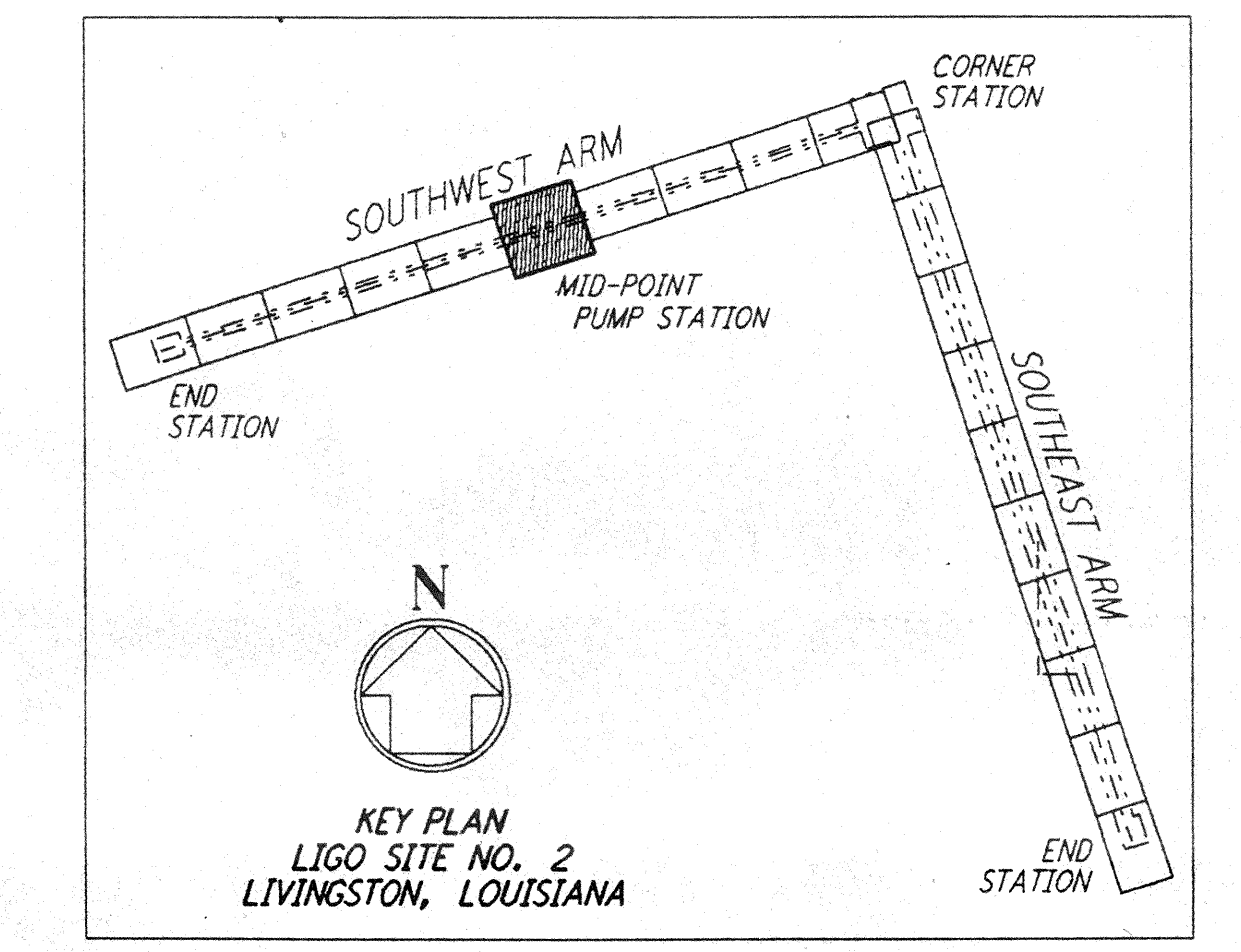
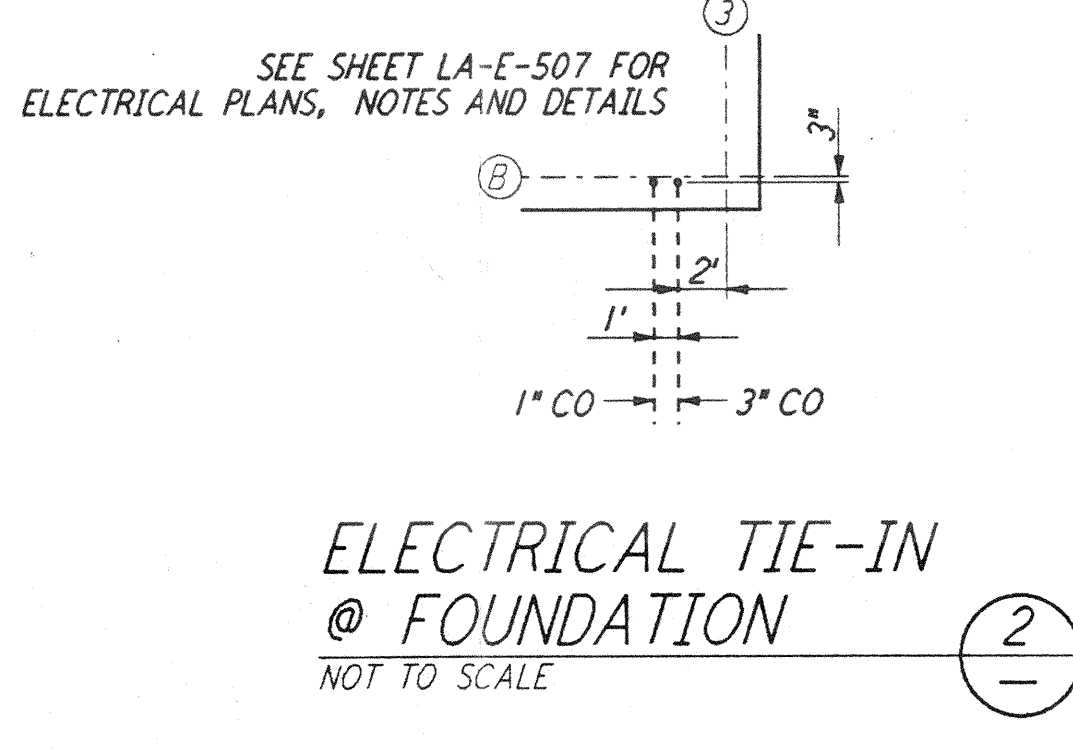
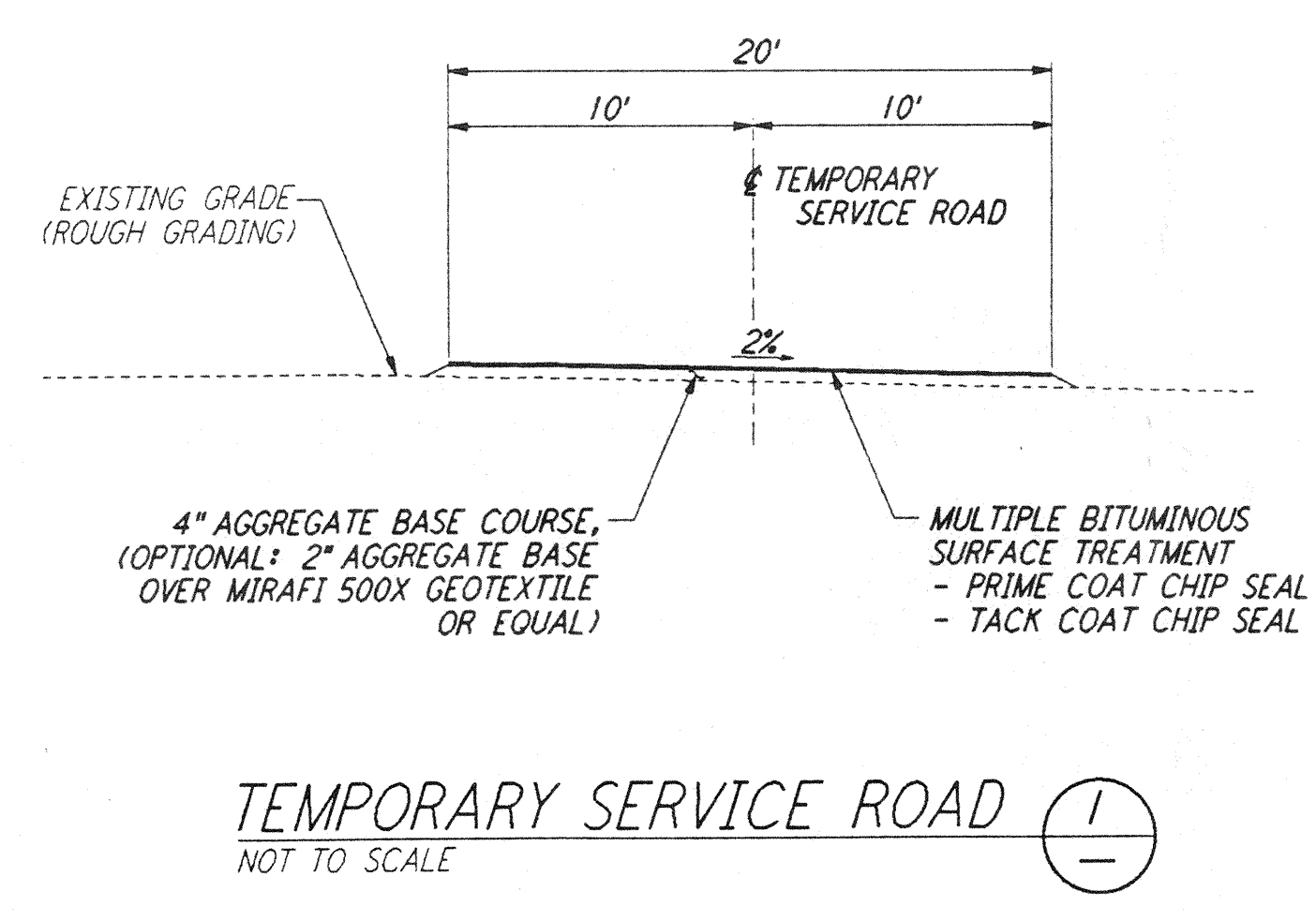
NOTES:

- SEE SHEET LA-C-502 FOR GENERAL NOTES, LEGEND AND ABBREVIATIONS.
- SEE SHEET LA-C-504 FOR TYPICAL SECTIONS AND DETAILS.



CURVE DATA				
Δ	RADIUS	LENGTH	TANGENT	REMARK
1	45°00'00"	52'	40.84'	PI @ TEMPORARY ROAD
2	45°00'00"	60'	47.12'	PI @ TEMPORARY ROAD

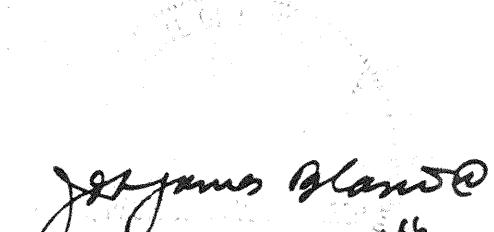
COORDINATES			
Δ	NORTH	EAST	REMARK
1	748645.7089	3450604.4199	PI @ TEMPORARY ROAD
2	748668.4802	3450559.7285	PI @ TEMPORARY ROAD
3	748635.3154	3450457.6570	PI @ TEMPORARY ROAD
4	748590.6389	3450434.8926	PI @ TEMPORARY ROAD




This document and the design it covers are the property of PARSONS. They are loaned only with the borrower's expressed written agreement that they will not be reproduced, copied, loaned, exhibited, or used in any other way, except by written consent from PARSONS to the borrower.

NO.	DATE	BY	CHKD	ENGR	PROJ	DESCRIPTION

ISSUED FOR CONSTRUCTION	
DRAWN	WRB 11-15-96
CHECKED	ML 11-15-96
ENGINEER	JB 11/15/96
PROJ	ACM 11/15/96


 JAMES BLANDO
 PROJECT MANAGER


PARSONS
 100 WEST WALNUT STREET
 PASADENA, CALIFORNIA


LIGO
 CALIFORNIA INSTITUTE OF TECHNOLOGY
 MASSACHUSETTS INSTITUTE OF TECHNOLOGY

LASER INTERFEROMETER
 GRAVITATIONAL-WAVE OBSERVATORY
 BEAM TUBE ENCLOSURE - LIVINGSTON, LA

TITLE	SCALE	CONTRACT NUMBER	PROJECT NUMBER
CIVIL SOUTHWEST ARM PUMP STATION PLOT AND UTILITY PLAN	1" = 20'	PP150969	8094
SHEET NUMBER		REVISIONS	
LA-C-521			