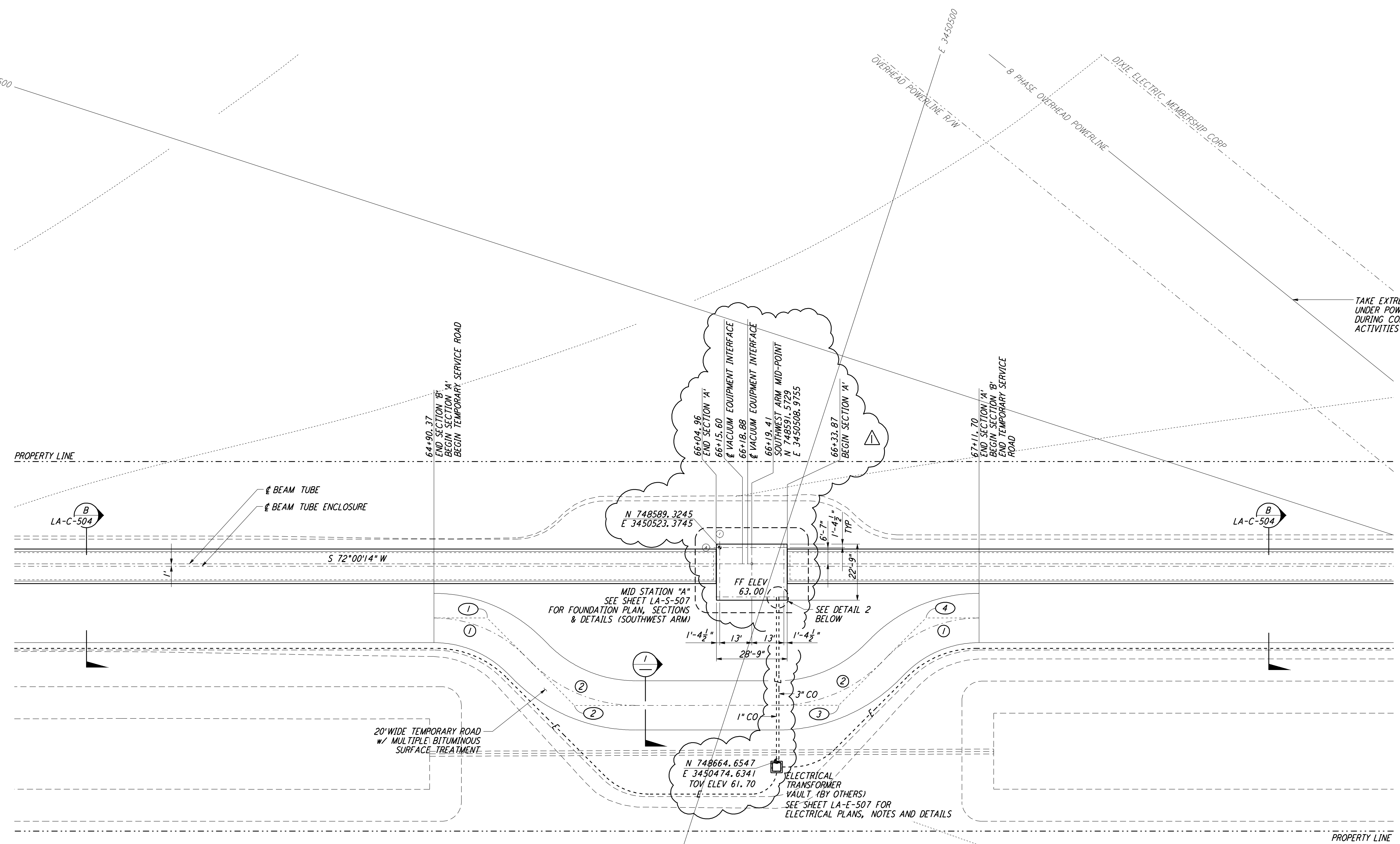
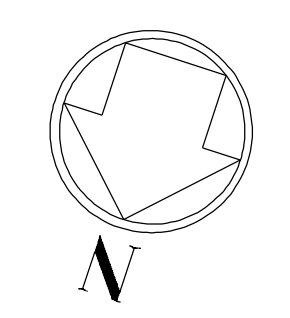
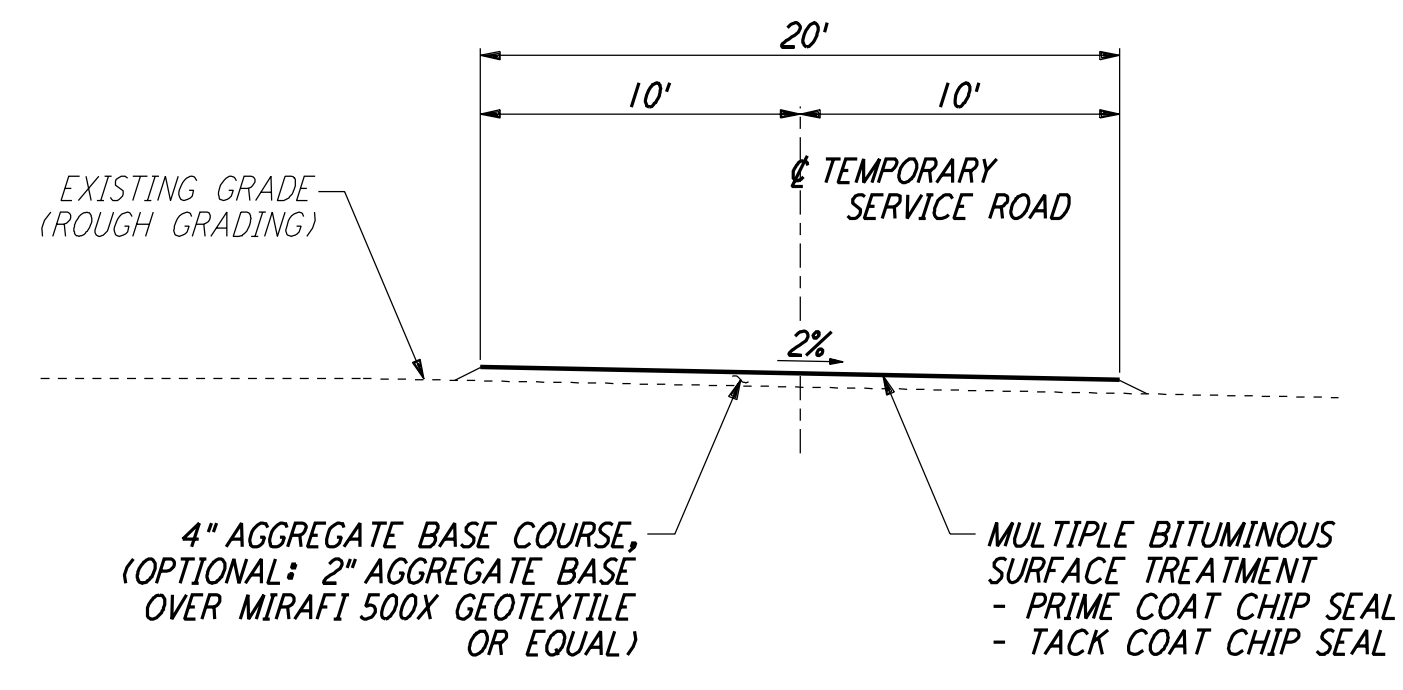


NOTES:
 1. SEE SHEET LA-C-502 FOR GENERAL NOTES, LEGEND AND ABBREVIATIONS.
 2. SEE SHEET LA-C-504 FOR TYPICAL SECTIONS AND DETAILS.

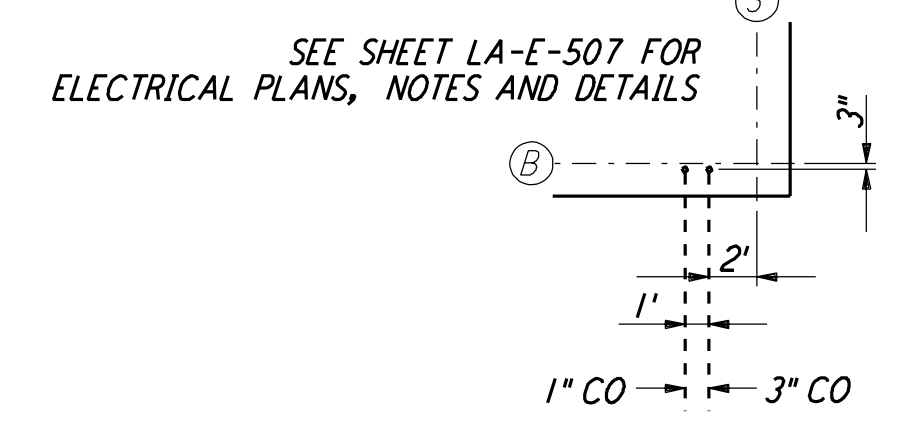


CURVE DATA					
Station	Δ	RADIUS	LENGTH	TANGENT	REMARK
1	45°00'00"	52'	40.84'	21.54'	TEMPORARY ROAD
2	45°00'00"	60'	47.12'	24.85'	TEMPORARY ROAD

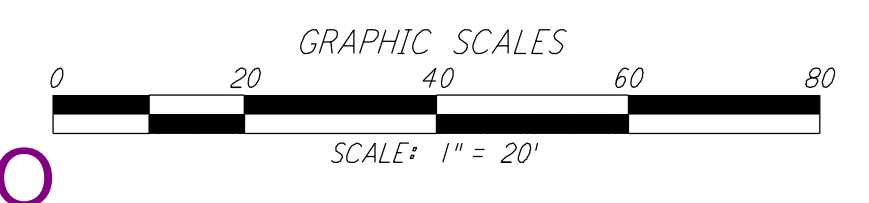
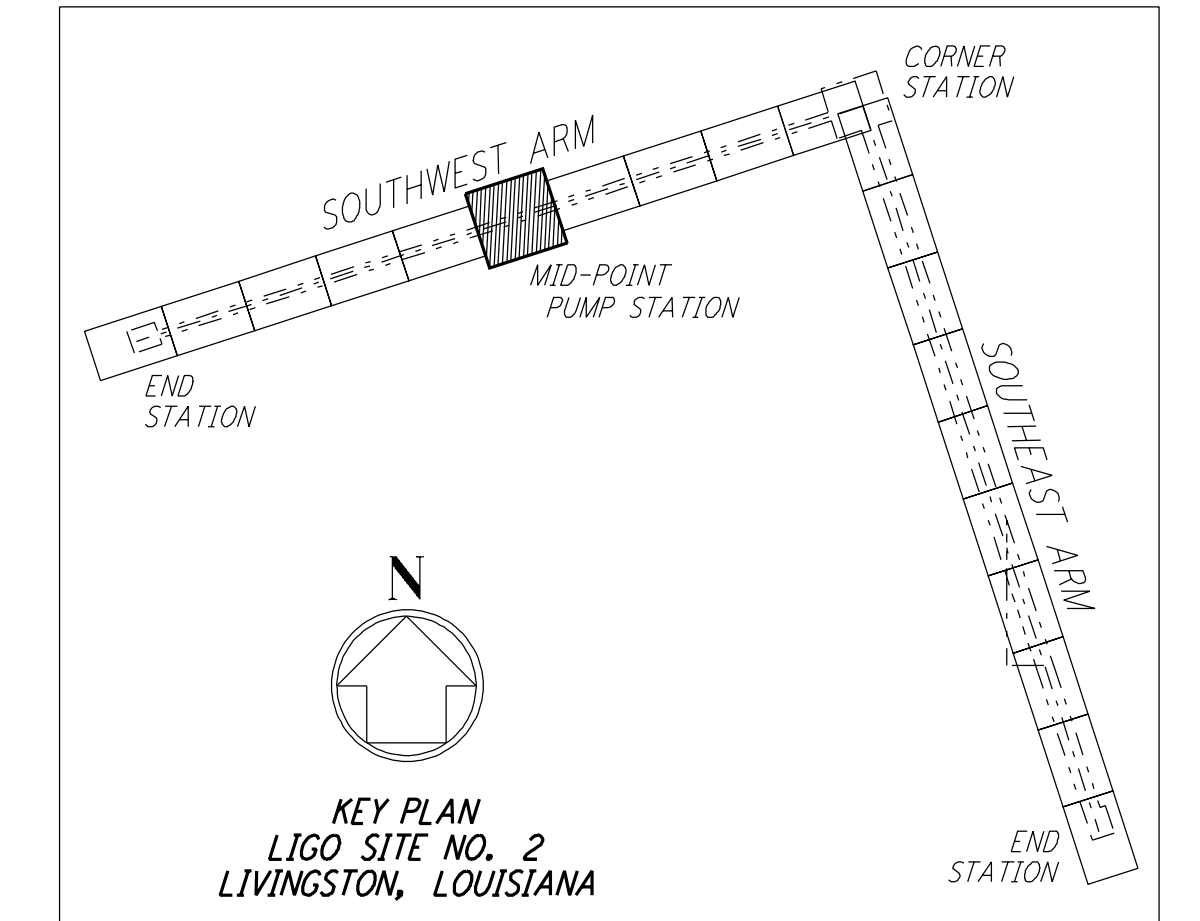
COORDINATES			
Station	NORTH	EAST	REMARK
1	748645.7089	3450604.4199	PI TEMPORARY ROAD
2	748668.4802	3450559.7285	PI TEMPORARY ROAD
3	748635.3154	3450457.6570	PI TEMPORARY ROAD
4	748590.6389	3450434.8926	PI TEMPORARY ROAD



TEMPORARY SERVICE ROAD
 NOT TO SCALE



ELECTRICAL TIE-IN @ FOUNDATION
 NOT TO SCALE



LIGO-D961275-01-O

NO.	DATE	BY	CHKD	ENGR	PROJ	DESCRIPTION
1	3-20-97	WRB				REVISED MID STATION, ELEC VAULT

ISSUED FOR CONSTRUCTION		
DRAWN	WRB	11-15-96
CHECKED	ML	11-15-96
ENGINEER	JB	11-15-96
PROJ	TDM	11-15-96

PARSONS

100 WEST WALNUT STREET
 PASADENA, CALIFORNIA

LIGO

CALIFORNIA INSTITUTE OF TECHNOLOGY
 MASSACHUSETTS INSTITUTE OF TECHNOLOGY

LASER INTERFEROMETER
 GRAVITATIONAL-WAVE OBSERVATORY
 BEAM TUBE ENCLOSURE - LIVINGSTON, LA

CIVIL
 SOUTHWEST ARM
 PUMP STATION
 PLOT AND UTILITY PLAN

SCALE: 1" = 20'

CONTRACT NUMBER: PP150969
 PROJECT NUMBER: 8094

SHEET NUMBER: **LA-C-521**

This document and the design it covers are the property of PARSONS. They are loaned only with the borrower's expressed written agreement that they will not be reproduced, copied, loaned, exhibited, or used in any other way, except by written consent from PARSONS to the borrower.

Tue Oct 6 17:29:55 1998 en:\plott\ref\NS3-30.dwg H:\000005\CE521.dwg