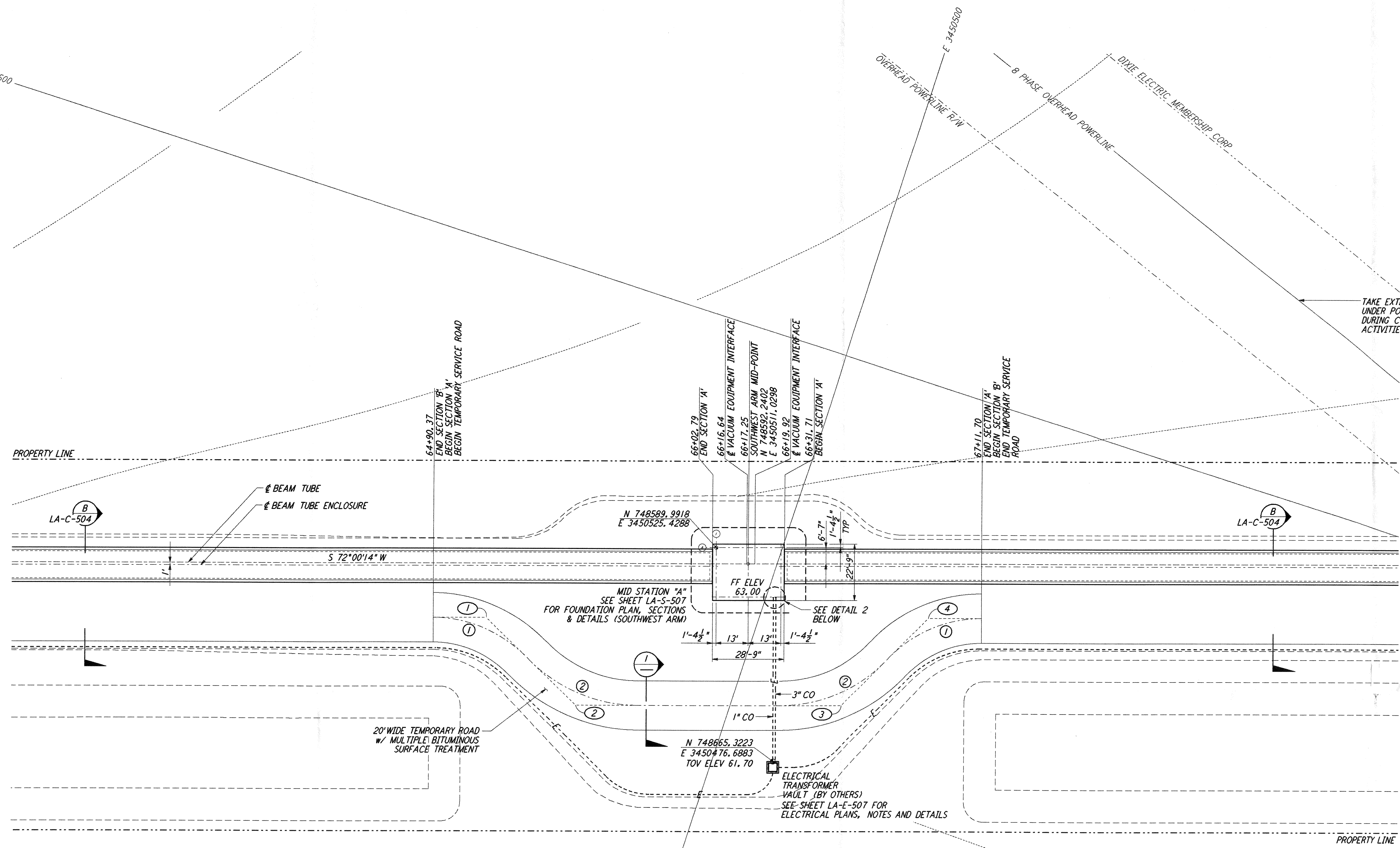
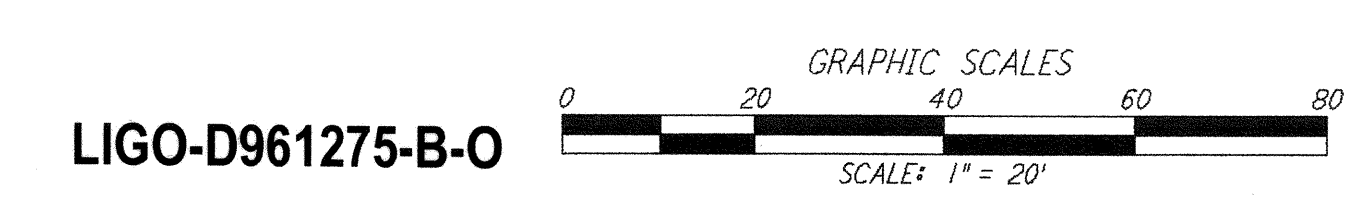
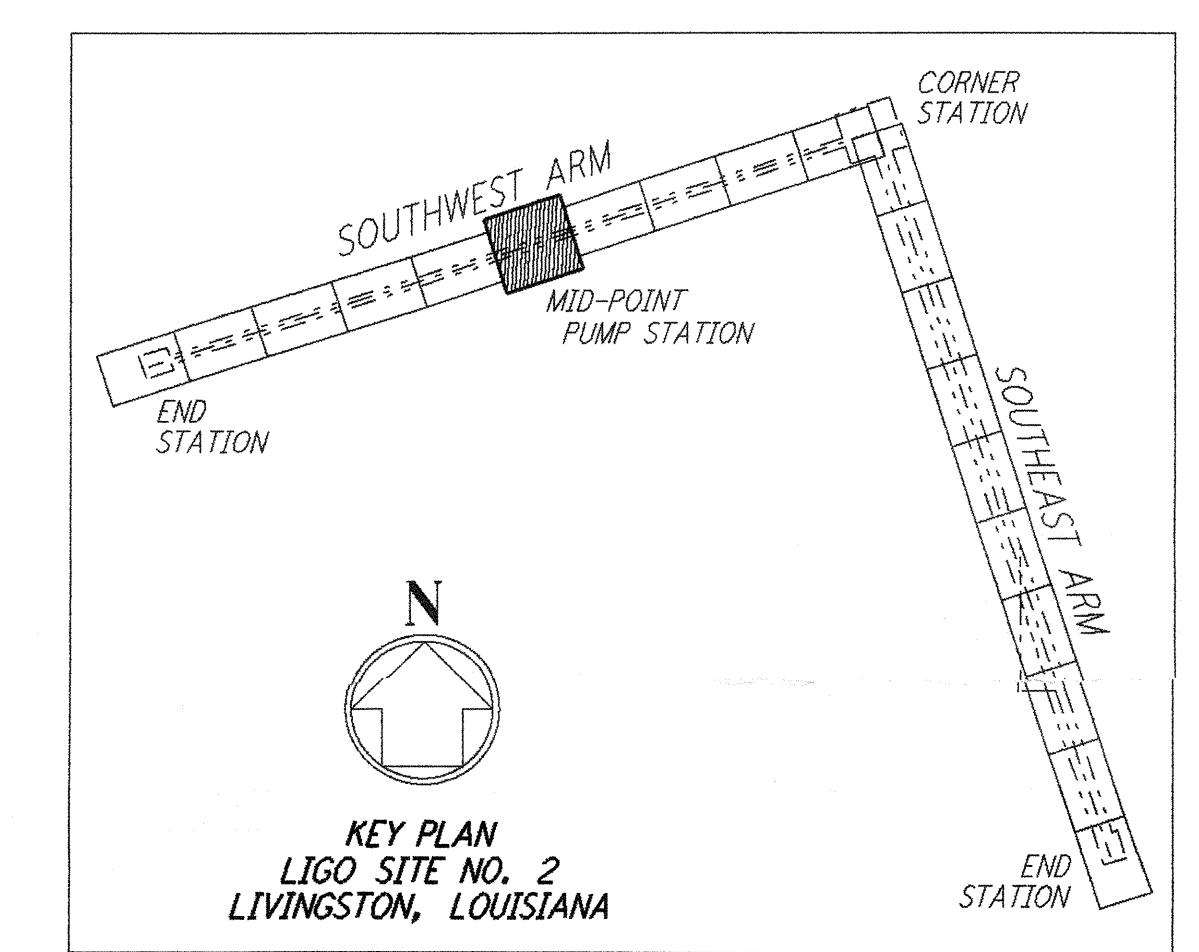
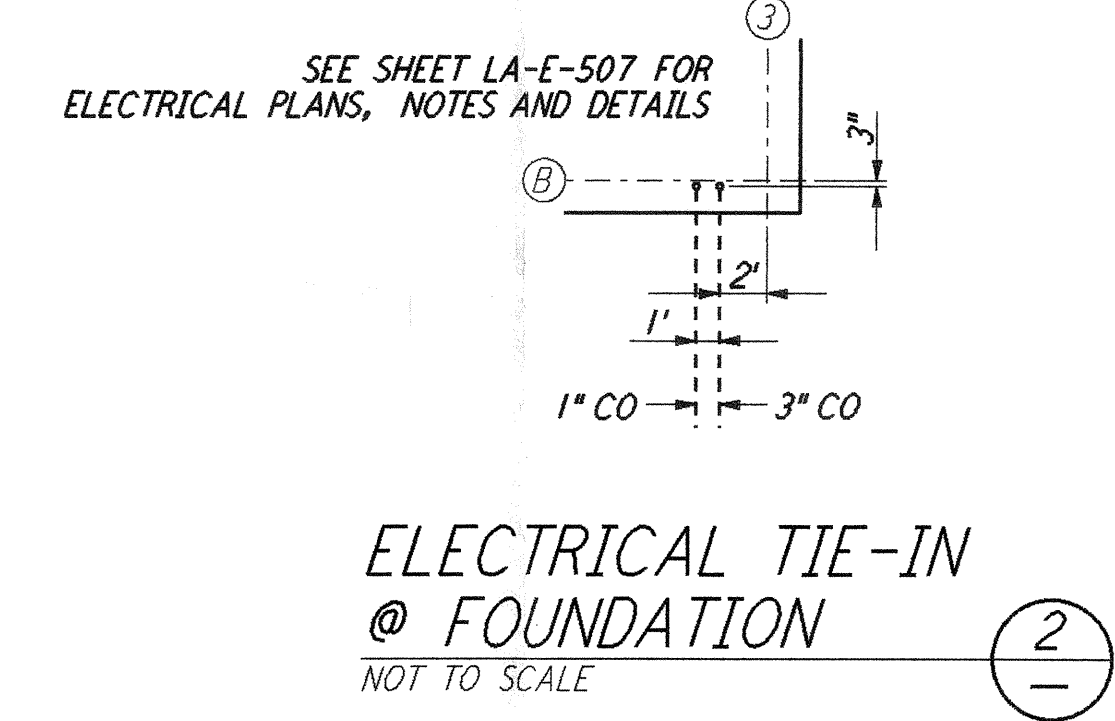
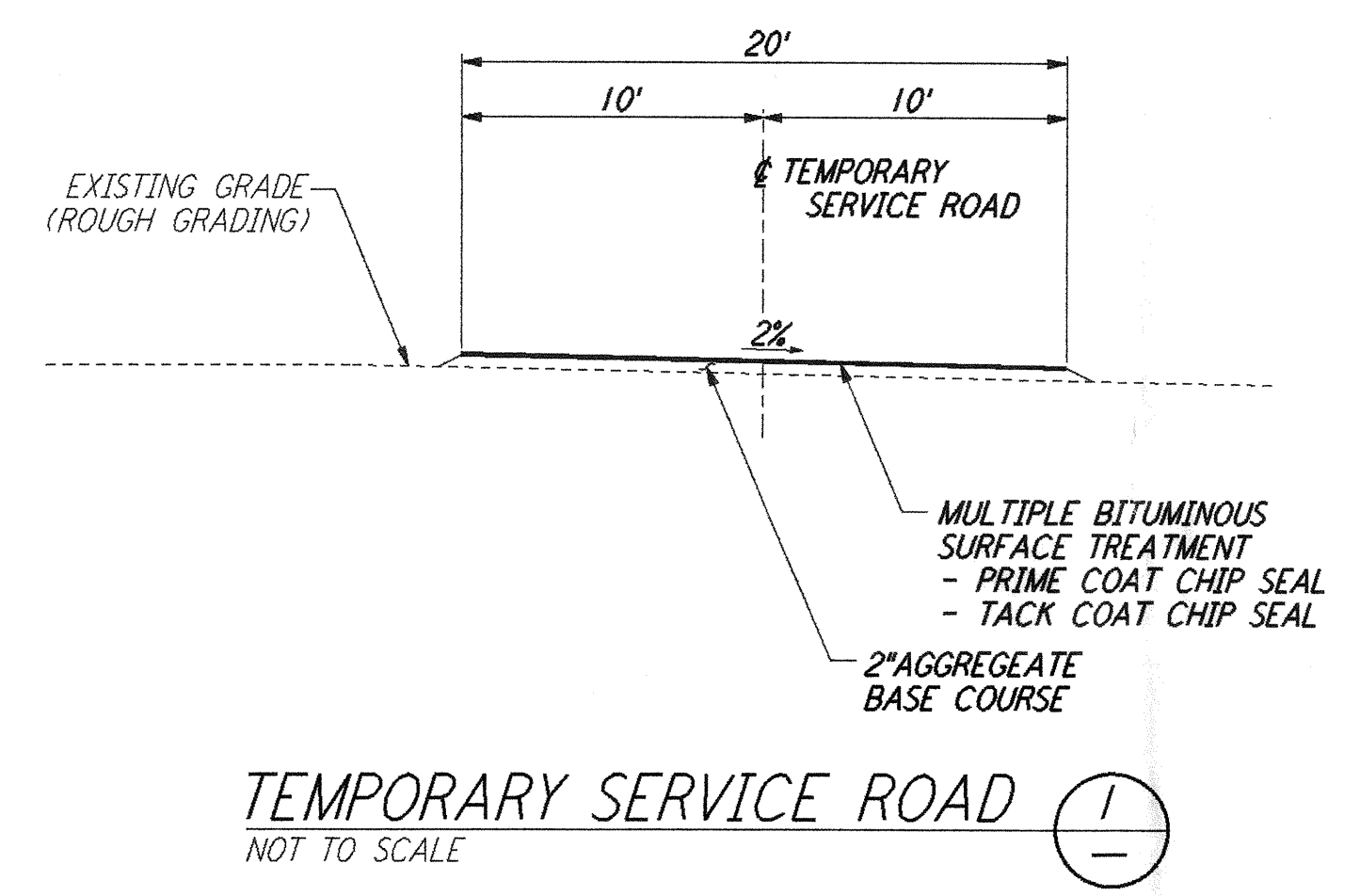


**NOTES:**  
 1. SEE SHEET LA-C-502 FOR GENERAL NOTES, LEGEND AND ABBREVIATIONS.  
 2. SEE SHEET LA-C-504 FOR TYPICAL SECTIONS AND DETAILS.



CURVE DATA					
Δ	RADIUS	LENGTH	TANGENT	REMARK	
1	45°00'00"	52'	40.84'	21.54'	TEMPORARY ROAD
2	45°00'00"	60'	47.12'	24.85'	TEMPORARY ROAD

COORDINATES			
POINT	NORTH	EAST	REMARK
1	748645.7089	3450604.4199	PI @ TEMPORARY ROAD
2	748668.4802	3450559.7285	PI @ TEMPORARY ROAD
3	748635.3154	3450457.6570	PI @ TEMPORARY ROAD
4	748590.6389	3450434.8926	PI @ TEMPORARY ROAD



This document and the design it covers are the property of PARSONS. They are loaned only with the borrower's expressed written agreement that they will not be reproduced, copied, loaned, exhibited, or used in any other way, except by written consent from PARSONS to the borrower.

NO.	DATE	BY	CHKD	ENGR	PROJ	DESCRIPTION
B	7/24/96	WRB	ML	CB	SDM	ISSUED FOR BID
A	6/28/96	WRB	ML	GB	TDM	FINAL DESIGN REVIEW

DRAWING NO.	DESCRIPTION
5	

**PARSONS**  
 100 WEST WALNUT STREET  
 PASADENA, CALIFORNIA

**LIGO**  
 CALIFORNIA INSTITUTE OF TECHNOLOGY  
 MASSACHUSETTS INSTITUTE OF TECHNOLOGY

**LASER INTERFEROMETER  
 GRAVITATIONAL-WAVE OBSERVATORY  
 BEAM TUBE ENCLOSURE - LIVINGSTON, LA**

TITLE	SCALE	CONTRACT NUMBER	PROJECT NUMBER
CIVIL SOUTHWEST ARM PUMP STATION PLOT AND UTILITY PLAN	1" = 20'	PP150969	8094

**LA-C-521**

I:\ligo\site2\ce\lacs21.dgz

I:\ligo\site2\ce\lacs21.dgz