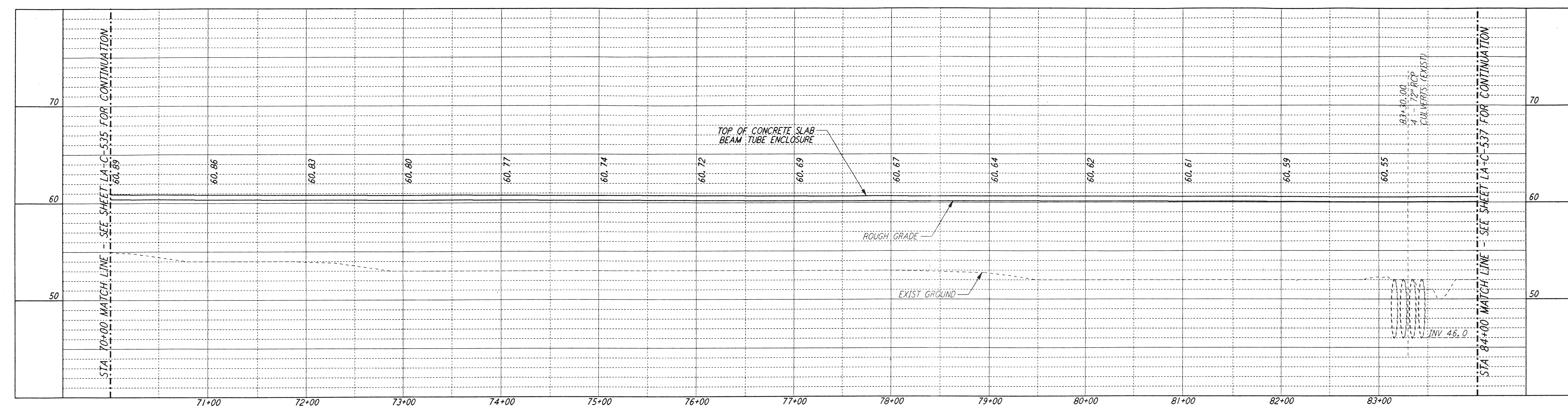
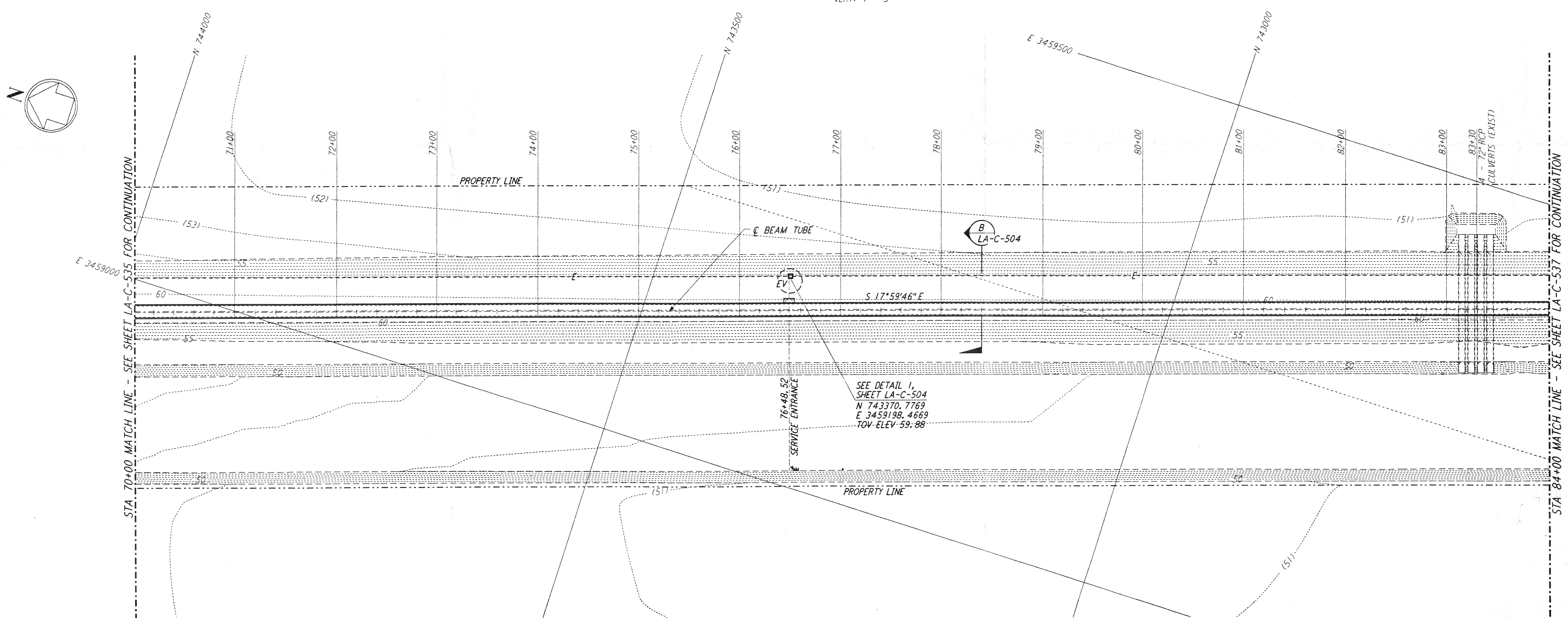


This document and the design it covers are the property of PARSONS. They are loaned only with the borrower's expressed written agreement that they will not be reproduced, copied, loaned, exhibited, or used in any other way, except by written consent from PARSONS to the borrower.

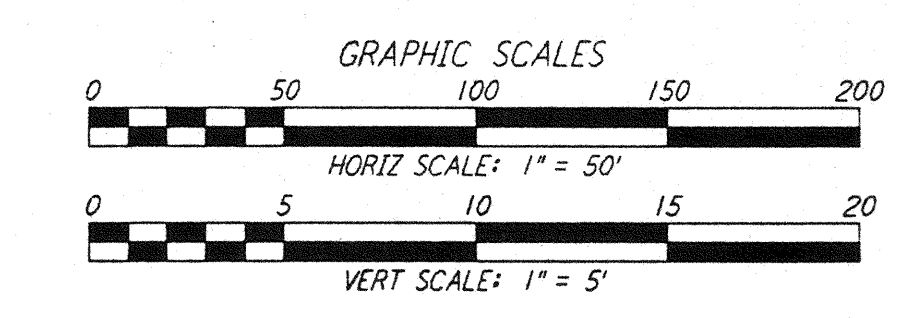
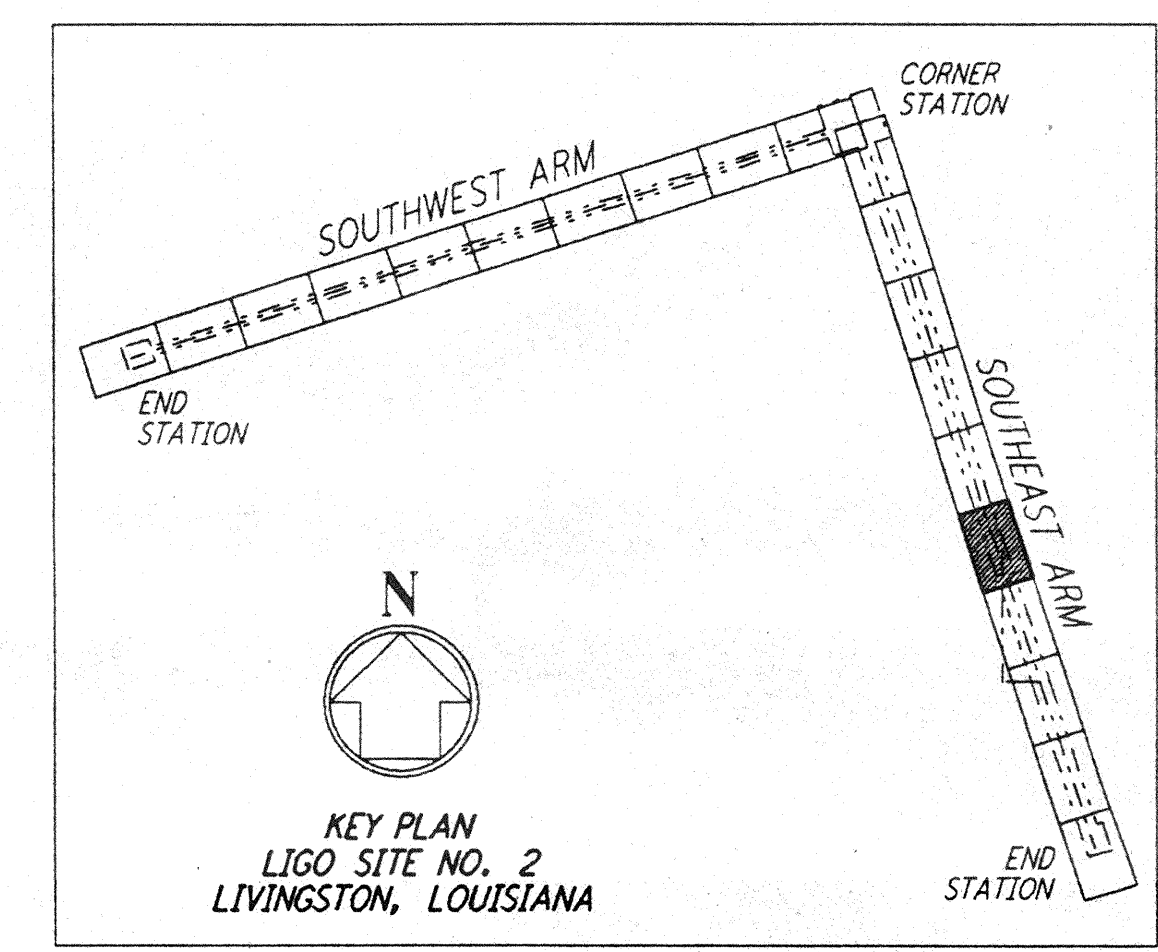
**NOTES:**  
 1. SEE SHEET LA-C-502 FOR GENERAL NOTES, LEGEND AND ABBREVIATIONS.  
 2. SEE SHEET LA-C-504 FOR TYPICAL SECTIONS AND DETAILS.



**PROFILE**  
 SCALES: HORIZ: 1" = 50'  
 VERT: 1" = 5'



**PLAN**  
 SCALE: 1" = 50'



NO.	DATE	BY	CHKD	ENGR	PROJ	DESCRIPTION

ISSUED FOR CONSTRUCTION	
DRAWN	WRB 11-15-96
CHECKED	ML 11-15-96
ENGINEER	JB 11/15/96
PROJ	11/15/96

*John H. ...*  
 11/15/96

**PARSONS**  
 100 WEST WALNUT STREET  
 PASADENA, CALIFORNIA

**LIGO**  
 CALIFORNIA INSTITUTE OF TECHNOLOGY  
 MASSACHUSETTS INSTITUTE OF TECHNOLOGY

LASER INTERFEROMETER  
 GRAVITATIONAL-WAVE OBSERVATORY  
 BEAM TUBE ENCLOSURE - LIVINGSTON, LA

TITLE	SCALE	CONTRACT NUMBER	PROJECT NUMBER
CIVIL SOUTHWEST ARM PLAN AND PROFILE STA 70+00 TO STA 84+00	AS NOTED	PP150969	8094
SHEET NUMBER		REVISIONS	
<b>LA - C - 536</b>			