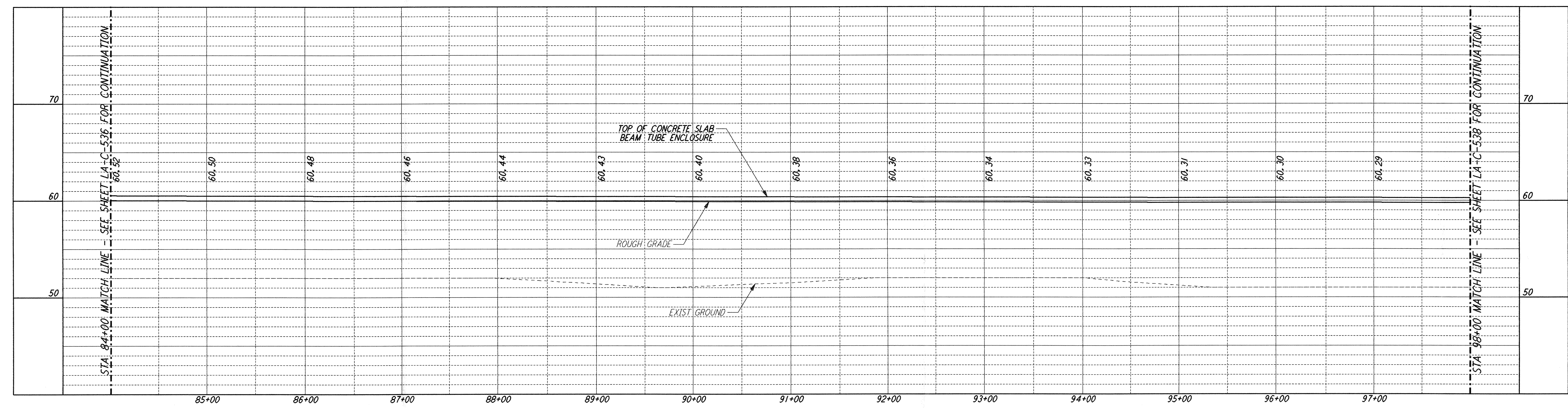
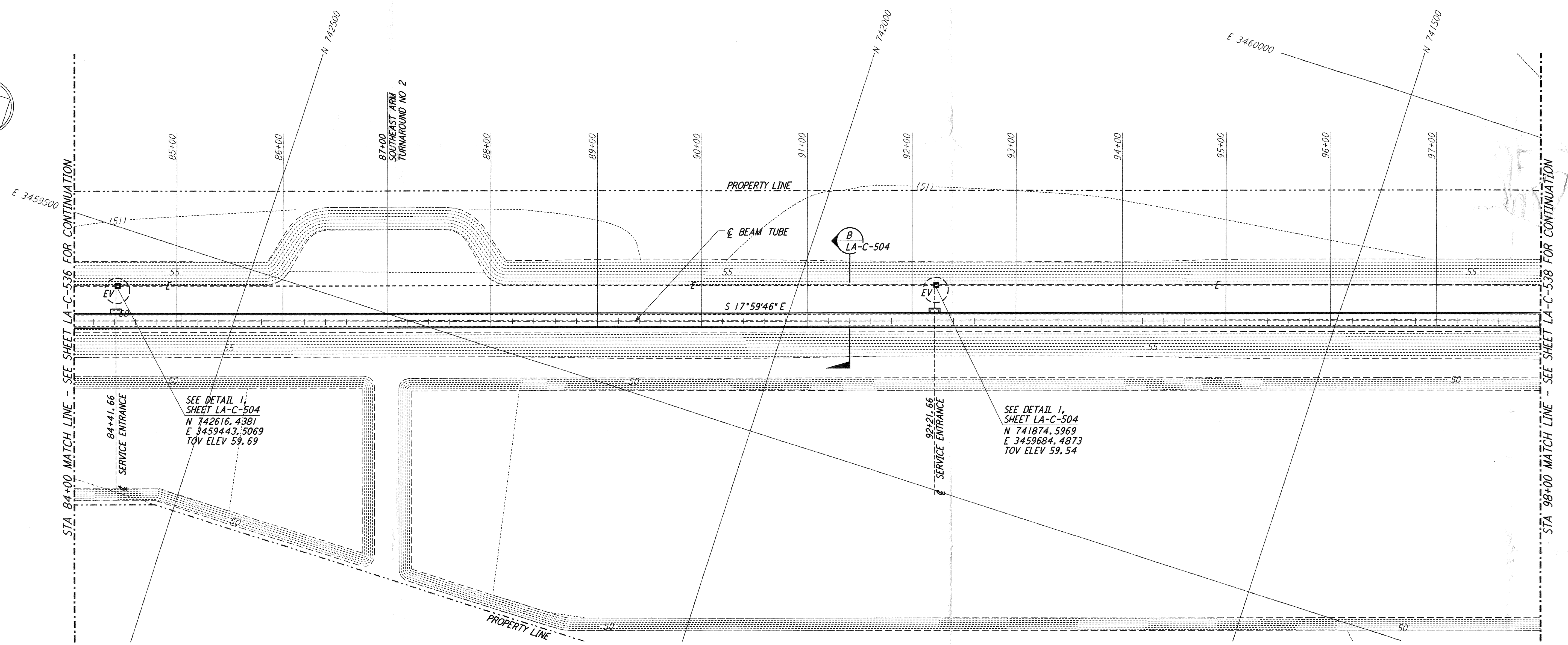


not be reproduced, copied, loaned, exhibited, or used in any other way, except by written consent from PARSONS to the borrower.

This document and the design it covers are the property of PARSONS. They are loaned only with the borrower's expressed written agreement that they will

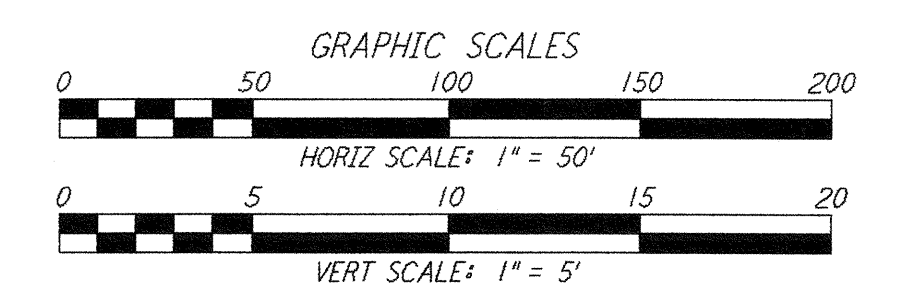
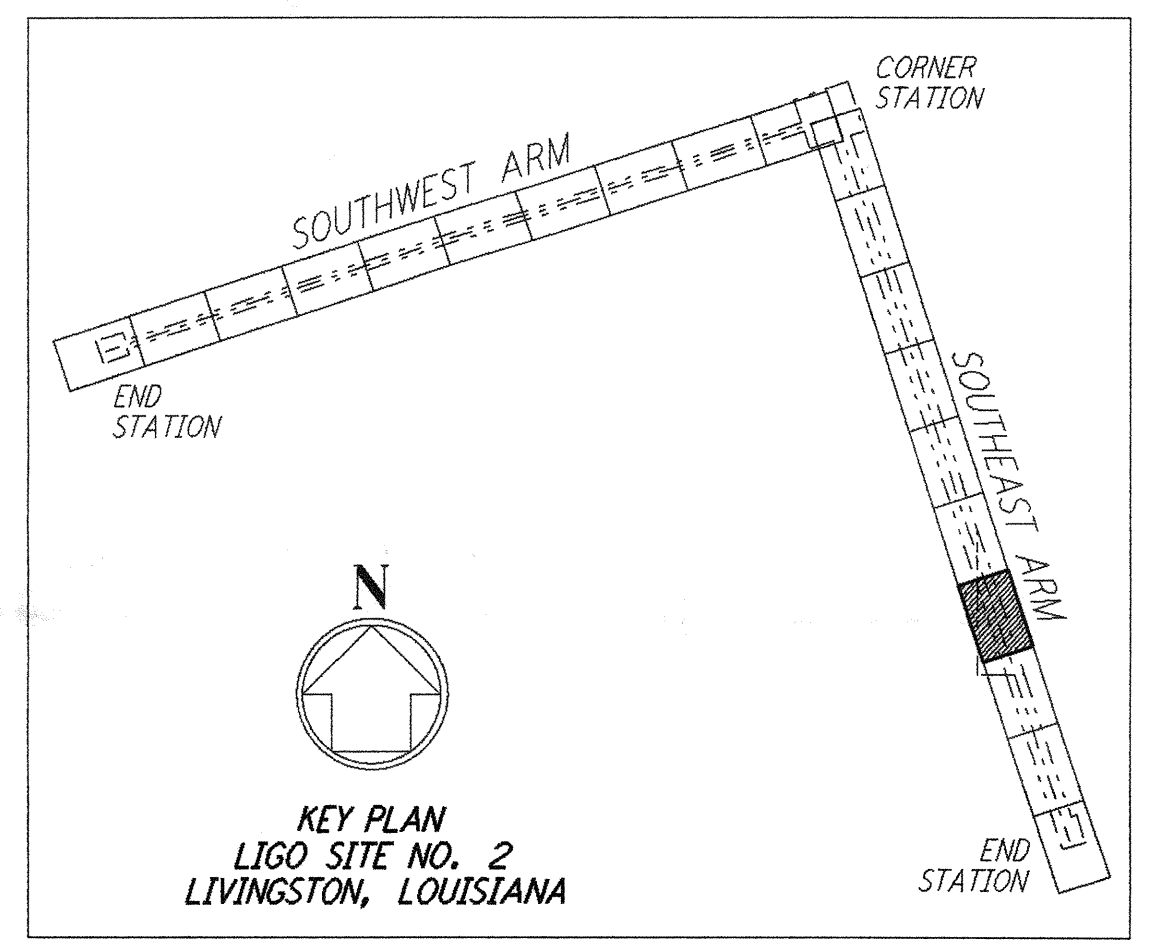


PROFILE
 SCALES: HORIZ: 1" = 50'
 VERT: 1" = 5'



PLAN
 SCALE: 1" = 50'

- NOTES:**
- SEE SHEET LA-C-502 FOR GENERAL NOTES, LEGEND AND ABBREVIATIONS.
 - SEE SHEET LA-C-504 FOR TYPICAL SECTIONS AND DETAILS.



LIGO-D961282-B-0

NO.	DATE	BY	CHKD	ENGR	PROJ	DESCRIPTION
B	7/24/96	WRB	MM			ISSUED FOR BID
A	6/28/96	WRB	ML			FINAL DESIGN REVIEW

DRAWN	WRB	6/24/96
CHECKED		
ENGINEER		
PROJ		

PARSONS

100 WEST WALNUT STREET
 PASADENA, CALIFORNIA

LIGO

CALIFORNIA INSTITUTE OF TECHNOLOGY
 MASSACHUSETTS INSTITUTE OF TECHNOLOGY

LASER INTERFEROMETER
 GRAVITATIONAL-WAVE OBSERVATORY
 BEAM TUBE ENCLOSURE - LIVINGSTON, LA

TITLE: CIVIL
 SOUTHWEST ARM
 PLAN AND PROFILE
 STA 84+00 TO STA 98+00

SCALE: AS NOTED
 CONTRACT NUMBER: PPI50969
 PROJECT NUMBER: 8094

SHEET NUMBER: **LA-C-537**

I:\LUG\JUL23\06542000\1370_537_V0002.dgn

I:\LUG\JUL23\06542000\1370_537_V0002.dgn