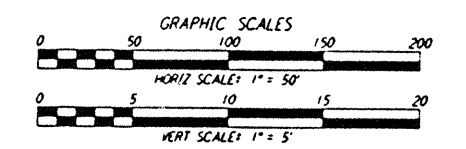
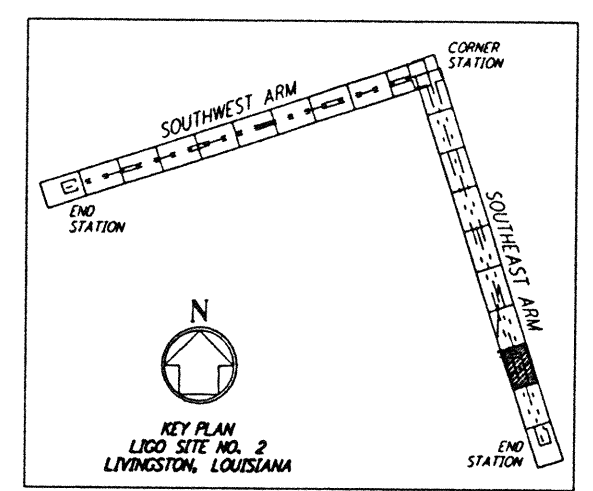
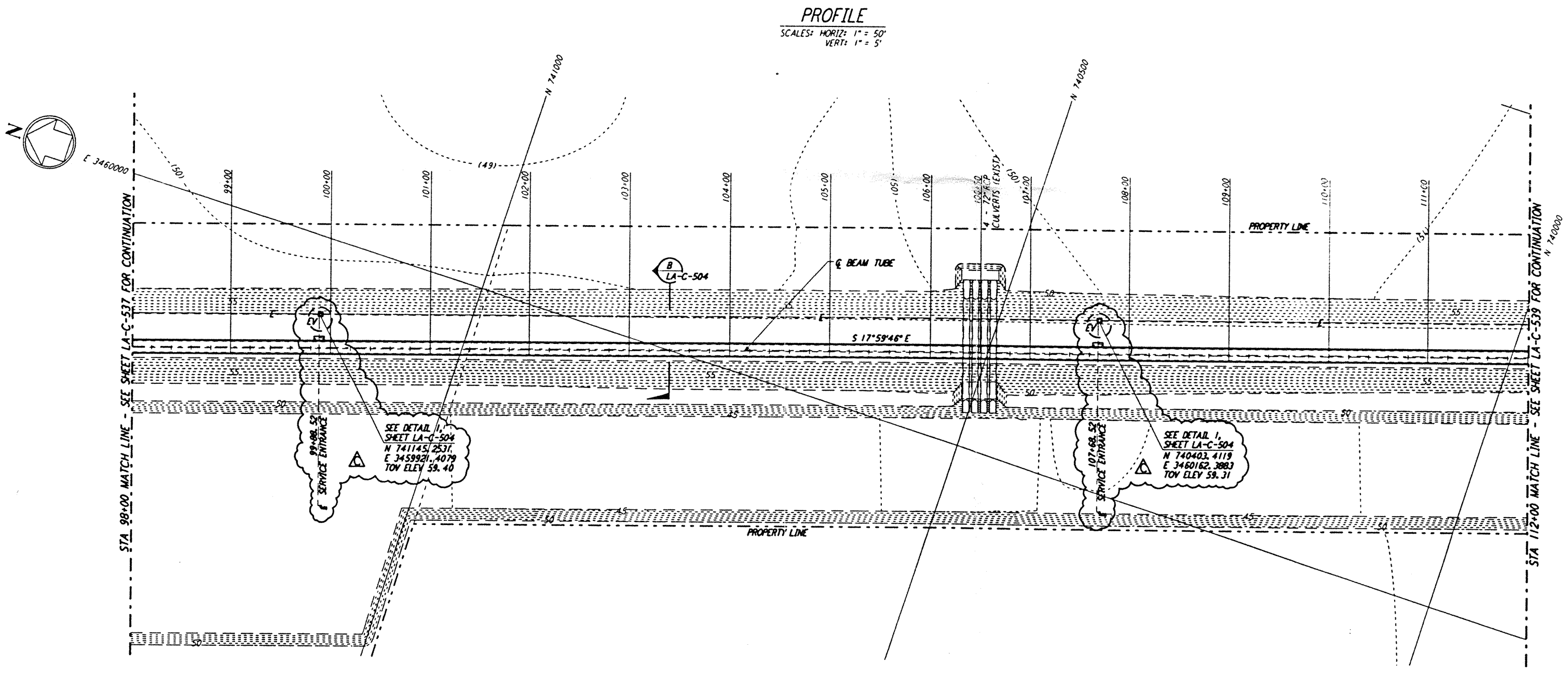
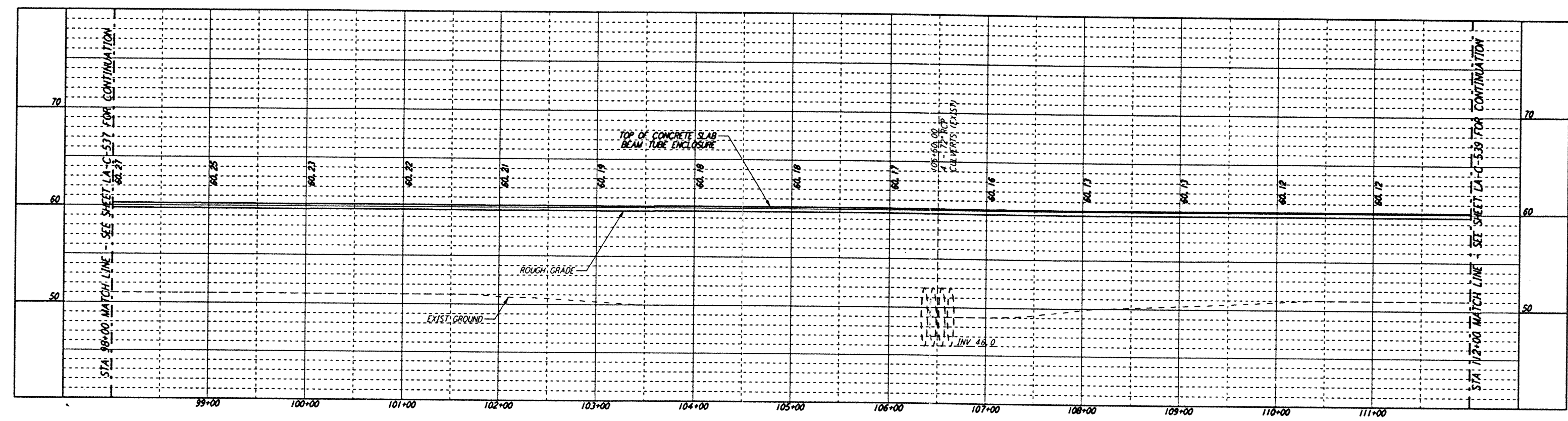


Mon Sep 30 07:12:39 1996 s3-v18b2 J:\PLOTS\QUFILES\18R2\CF538A.PRF

This document and the design it covers are the property of PARSONS. They are loaned only with the borrower's expressed written agreement that they will not be reproduced, copied, loaned, exhibited, or used in any other way, except by written consent from PARSONS to the borrower.

DATE: 09/30/96 TIME: 07:16:30
 DESIGN FILE: I:\lgo\site2\ce\loc538.dwg

NOTES:
 1. SEE SHEET LA-C-502 FOR GENERAL NOTES, LEGEND AND ABBREVIATIONS.
 2. SEE SHEET LA-C-504 FOR TYPICAL SECTIONS AND DETAILS.



NO.	DATE	BY	CHKD	ENGR	PROJ	DESCRIPTION
C	9/27/96	WRB	ML	JB	TOM	BID ADDENDUM NO. 3
B	9/10/96	WRB	ML	JB	TOM	BID ADDENDUM NO. 2
A	6/28/96	WRB	ML	JB	TOM	FINAL DESIGN REVIEW

DRAWN	WRB	6/24/96
CHECKED		
ENGINEER		
PROJ		

PARSONS
 100 WEST WALNUT STREET
 PASADENA, CALIFORNIA

LIGO
 CALIFORNIA INSTITUTE OF TECHNOLOGY
 MASSACHUSETTS INSTITUTE OF TECHNOLOGY

LASER INTERFEROMETER GRAVITATIONAL-WAVE OBSERVATORY BEAM TUBE ENCLOSURE - LIVINGSTON, LA

TITLE	CIVIL	CONTRACT NUMBER	PROJECT NUMBER
	SOUTHEAST ARM	AS NOTED PP150969	8094
	PLAN AND PROFILE		
	STA 98+00 TO STA 112+00		
	LA-C-538		