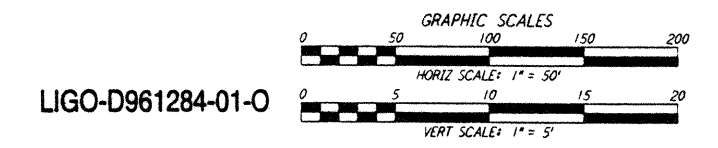
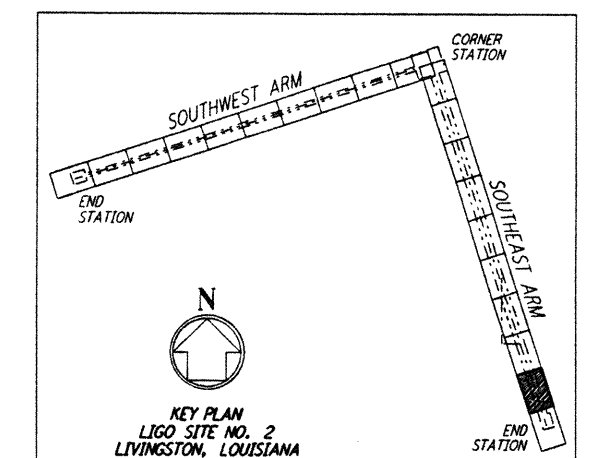
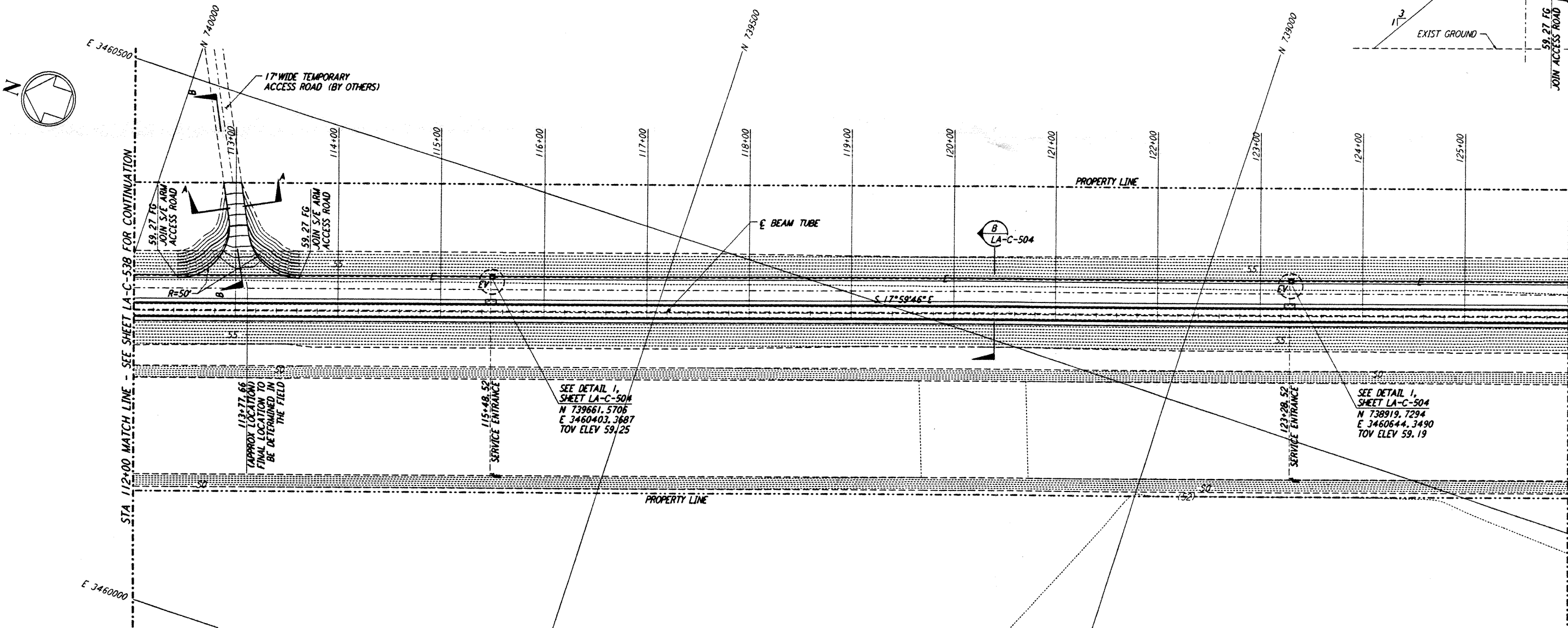
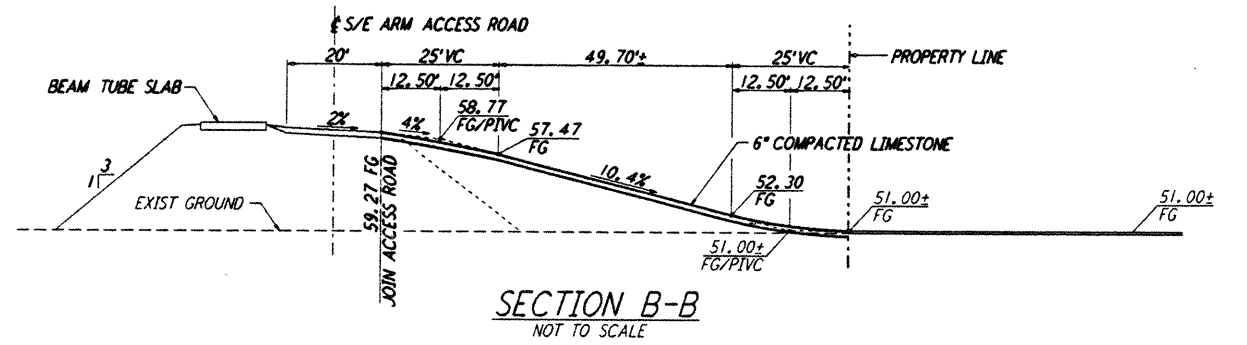
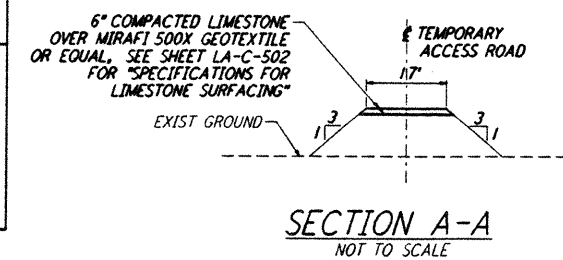
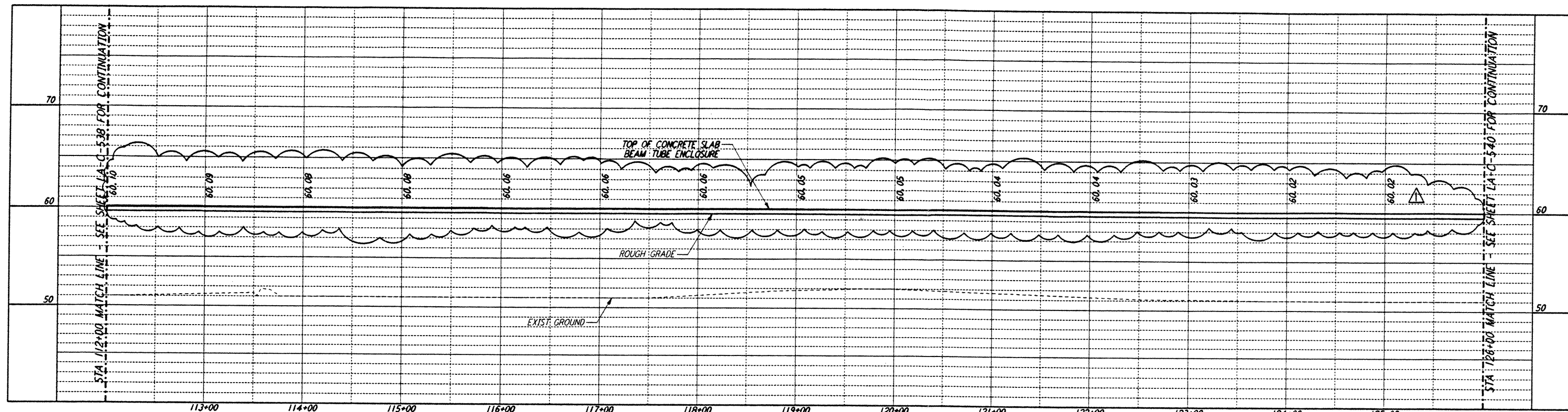


- NOTES:**
1. SEE SHEET LA-C-502 FOR GENERAL NOTES, LEGEND AND ABBREVIATIONS.
  2. SEE SHEET LA-C-504 FOR TYPICAL SECTIONS AND DETAILS.
  3. ALL GRADES, DIMENSIONS AND ELEVATIONS SHOWN FOR THE TEMPORARY ACCESS ROAD ARE APPROXIMATE, PENDING FINAL LOCATION IN THE FIELD.



LIGO-D961284-01-0

NO.	DATE	BY	CHKD	ENGR	PROJ	DESCRIPTION
1	2-3-97	WRB	CL	JB	TDM	REVISED PROFILE ELEVATIONS

ISSUED FOR CONSTRUCTION		
DRAWN	WRB	11-15-96
CHECKED	ML	11-15-96
ENGINEER	JB	11-15-96
PROJ	TDM	11-15-96

*John James Blasing*  
 02/14/97

**PARSONS**  
 100 WEST WALNUT STREET  
 PASADENA, CALIFORNIA

**LIGO**  
 CALIFORNIA INSTITUTE OF TECHNOLOGY  
 MASSACHUSETTS INSTITUTE OF TECHNOLOGY

**LASER INTERFEROMETER  
 GRAVITATIONAL-WAVE OBSERVATORY  
 BEAM TUBE ENCLOSURE - LIVINGSTON, LA**

CIVIL  
 SOUTHEAST ARM  
 PLAN AND PROFILE  
 STA 112+00 TO STA 126+00

SCALE: AS NOTED  
 CONTRACT NUMBER: PPI50969  
 PROJECT NUMBER: 8094  
 SHEET NUMBER: **LA-C-539**

LIGO-D961284-01-0

LIGOLTF3.BOR

This document and the design it covers are the property of PARSONS. They are loaned only with the borrower's expressed written agreement that they will not be reproduced, copied, loaned, exhibited, or used in any other way, except by written consent from PARSONS to the borrower.