

PLAN "E"
UPPER PLAN

APPROVED
M. Tellalian 10/16/96
 DATE
J. Jones 11/14/96
 DATE
 LIGO

SHIP PC	MARK	ASSM PC	DESCRIPTION	LENGTH		SPEC	ID
				FT	IN		
1	103-1-A		PORTABLE CALIBRATION MODULE ASSEMBLY				
	103-1-1	1	ELBOW 3/8 DIA, CAJON #SS-6-TSW-9			316	PA
	103-1-2	1	TUBE 3/8 DIA X 0.035 THK	0	2 5/8	304	PA
	103-1-3	1	VCR S.W. GLAND 3/8 DIA CAJON #SS-6-VCR-3			316	PA
	103-1-4	3	VCR MALE NUT 1/2 DIA CAJON #SS-8-VCR-4			316	PE
	103-1-5	5	VCR GASKET 1/2 DIA, CAJON #SS-8-VCR-2-GR (INCLUDES 1 SPARE)			SS	PA
	103-1-6	2	VALVE 1/2 DIA W/VCR ENDS NUPRO #SS-8BK-TW-V19			SS	PC
	103-1-7	1	VCR PLUG 1/2 DIA, CAJON #SS-8-VCR-P			316	PA
	103-1-8	1	TUBE 1/2 DIA X 0.035 THK	0	3 1/8	304	PA
	103-1-9	1	ELBOW 1/2 DIA, CAJON #SS-8-TSW-9			316	PA
	103-1-10	1	MALE WELD GLAND 1/2 DIA CAJON #SS-8-VCR-3-8MTW			316	PA
	103-1-11	1	VCR S.W. GLAND 1/2 DIA CAJON #SS-8-VCR-3			316	PA
	103-1-12	1	TUBE 1/2 DIA X 0.035 THK	0	5 7/16	304	PA
	103-1-13	1	NW REDUCING CENTERING RING AND O-RING NOR-CAL #NW-10/16-CR			SS/VITON	PA
	103-1-14	1	NW S.W. FLANGE, NOR-CAL #NW-10-SW			SS	PA
	103-1-15	3	NW CLAMP, NOR-CAL #NW-16-CP			ALUMINUM	PA
	103-1-16	1	NW FLEX HOSE, NW-16 NOR-CAL # TH-075-10-2NW	0	10	SS	PA
	103-1-17	1	NW ELBOW 90° RADIUS NOR-CAL #2E-NW-16B			SS	PA
	103-1-18	3	NW CENTERING RING AND O-RING NOR-CAL #NW-16-CR-SV			SS/VITON	PA
	103-1-19	1	CALIBRATED HYDROGEN LEAK MANUFACTURED BY VTI				PD
	103-1-20	1	CALIBRATED NITROGEN LEAK MANUFACTURED BY VTI				PD
	103-1-21	1	ROUGHING PUMP, DANIELSON BARODYN #BD-20-100MT				PD
	103-1-22	4	U-BOLT 1/4 DIA FOR 1 1/2 DIA PIPE ZINC PL OR GALV			CS	PE
	103-1-23	1	U-BOLT 3/8 DIA FOR 3 1/2 DIA PIPE ZINC PL OR GALV			CS	PE
	103-1-24	8	NUT 1/4 DIA ZINC PL OR GALV			CS	PE
	103-1-25	2	NUT 3/8 DIA ZINC PL OR GALV			CS	PE
	103-2-A	1	FLEX HOSE ASSY.				
	103-2-B	1	LOWER TUBING ASSY.				
	103-3-A	1	ROUGHING PUMP TUBE ASSY.				
	103-4-A	1	MAJOR TUBE ASSY.				
	103-5-A	1	TEST BOTTLE TUBE ASSY.				
	103-6-A	1	CALIBRATED LEAK TUBE ASSY.				
	103-7-A	1	CALIBRATION MODULE FRAME ASSY.				

DETAILED AND BILLED FOR (1), (1) REQUIRED

▶ REVISED ENTIRE SHT.

NOTE:
1. WORK THIS DWG. WITH DRAWING 103 SHT. 2 THRU 9

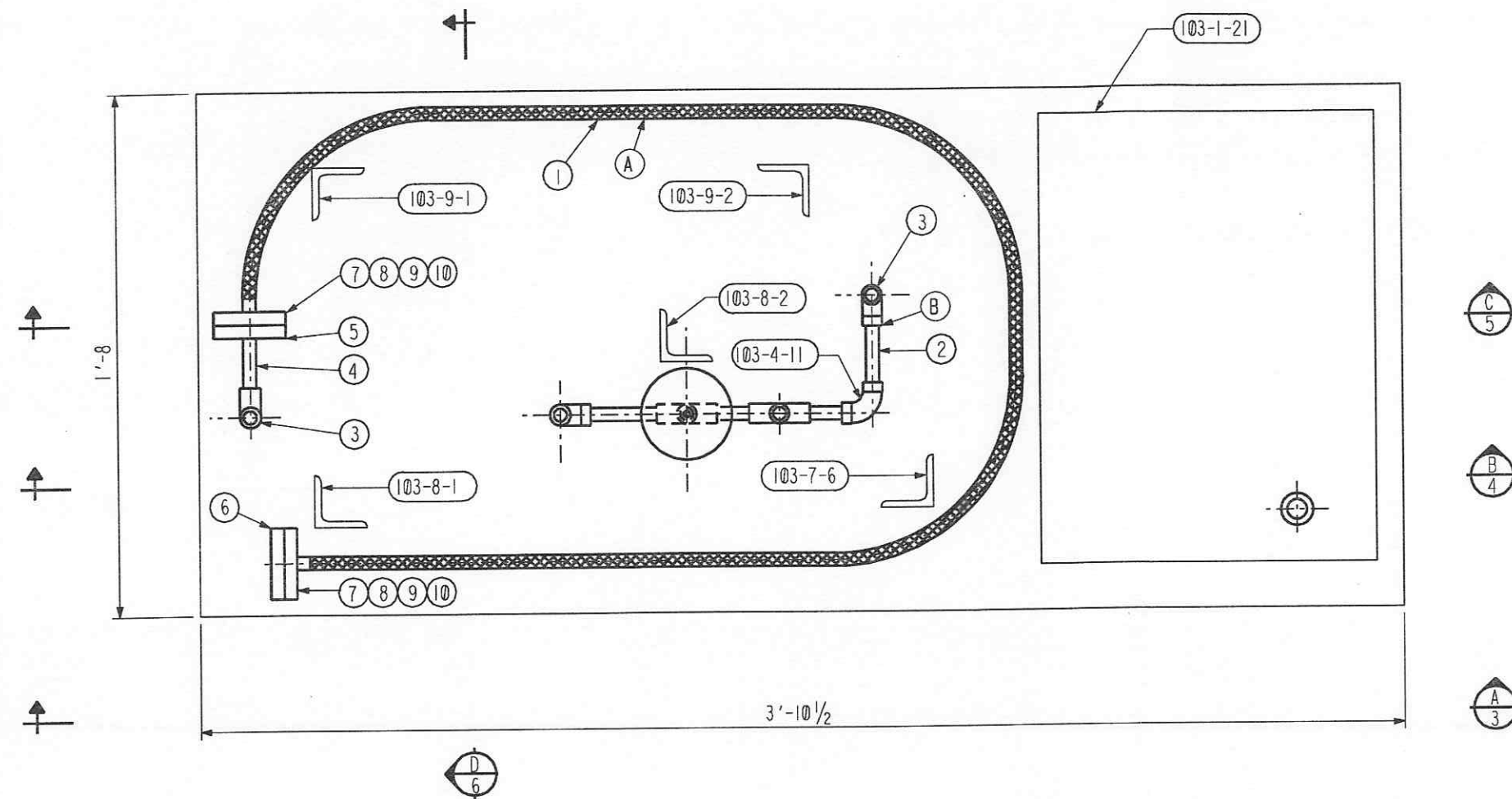
▶ INDICATES CHANGE FROM PREVIOUS ISSUE

BY		DATE	DIR	REVISED ENTIRE SHT.	REMARKS	CBI		SUPPLIER'S / PURCHASER'S NO	
BY	DATE	CHKD	DATE	REVISED ENTIRE SHT.		LIGO BEAM TUBE HANFORD, WA AND LIVINGSTON, LA PORTABLE CALIBRATION MODULE PLAN "E"			
BY	DATE	CHKD	DATE	REVISED ENTIRE SHT.		CUSTOMER'S NO		CONTRACT NO	
BY	DATE	CHKD	DATE	REVISED ENTIRE SHT.		BY RKZ CHKD WAC DATE 3/11/96		953571	
					M. L. TELLALIAN ENGINEERING ASSIGNED		DWG	103	REV
							SHT	1	2
LIGO-D961301-02-B									

57101103.DGN

SHIP PC	MARK	ASSM PC	DESCRIPTION	LENGTH		SPEC	ID
				FT	IN		
103-2-A	1		FLEX HOSE ASSEMBLY (ATTACH TO 103-1-A)				
103-2-1	1		BRAIDED FLEX HOSE 3/4 DIA W/ 2.75 CF FLG	8	0	SS	PA
103-2-3	1		SOCKET WELD ELBOW, CAJON #SS-8-TSW-9			316	PA
103-2-4	1		TUBE 1/2 DIA X 0.035 THK	0	2 7/16	304	PA
103-2-5	1		FLG 2.75 CF BORED FOR 1/2 DIA TUBE			304	PA
103-2-6	1		BLIND FLG 2.75 CF			304	PA
103-2-7	10		GASKET 2.75 CF (INCLUDES 8 SPARES)			COPPER	PA
103-2-8	15		BOLT 1/4-28 (INCLUDES 3 SPARES)	0	1 1/4	SS	PE
103-2-9	15		WASHER 1/4 DIA (INCLUDES 3 SPARES)			SS	PE
103-2-10	7		PLATE NUT 1/4-28 (INCLUDES 1 SPARE)			SS	PE
103-2-B	1		LOWER TUBE ASSEMBLY (ATTACH TO 103-1-A)				
103-2-2	1		TUBE 1/2 DIA X 0.035 THK	0	2 7/8	304	PA
103-2-3	1		SOCKET WELD ELBOW, CAJON #SS-8-TSW-9			316	PA

DETAILED AND BILLED FOR (1), (1) REQUIRED



PLAN "F"
LOWER PLAN

▶ REVISED ENTIRE SHT.

NOTE:

1. WORK THIS DWG. WITH DRAWING 103 SHT. 1, 3 THRU 9

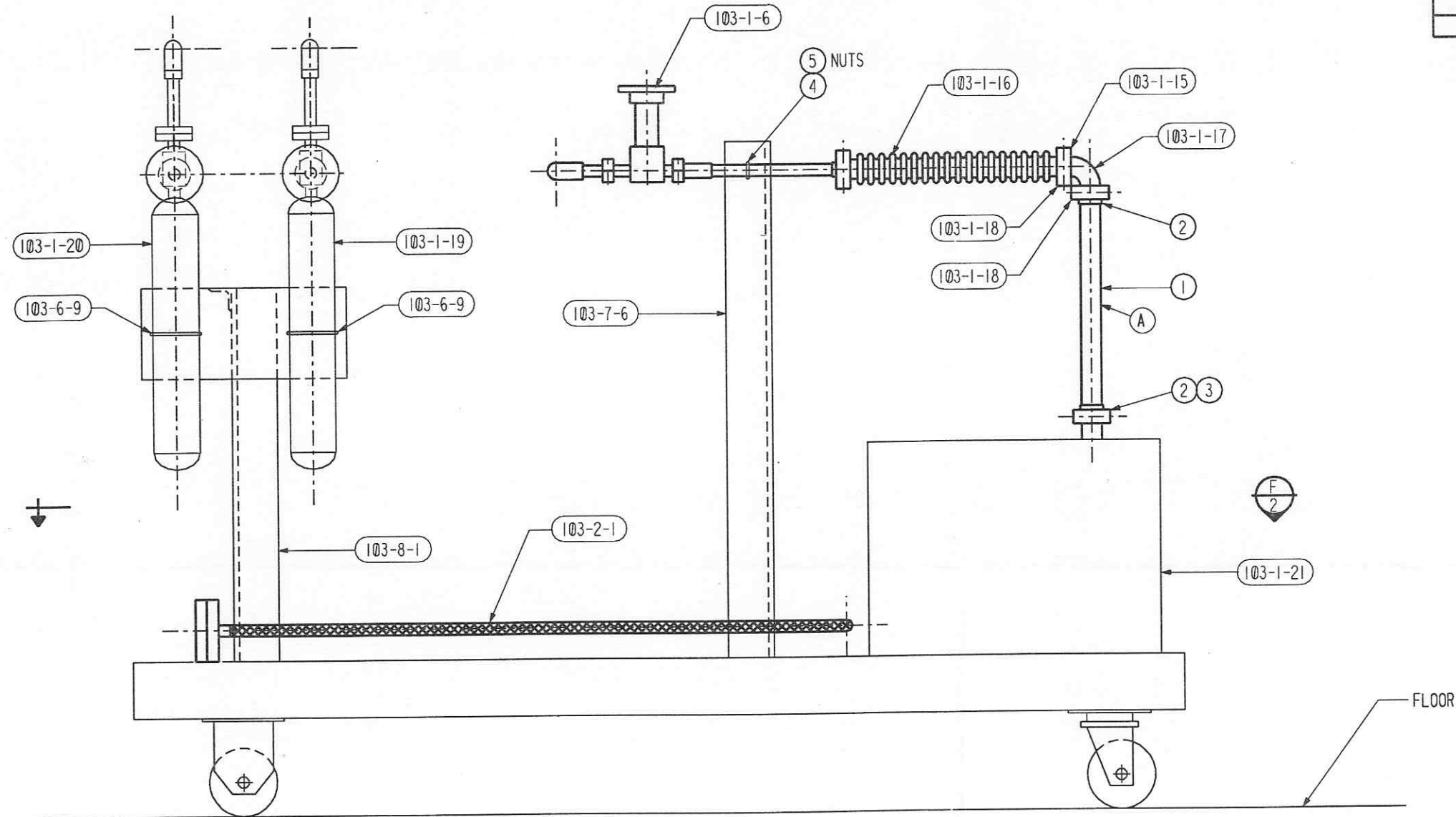
APPROVED
M. Tellalian 10/14/96
 DATE
J. [Signature] 11/14/96
 DATE
 LIGO

BY		CHKD	DATE	DIR	REVISIONS	REMARKS	CBI		SUPPLIER'S / PURCHASER'S NO
BY		CHKD	DATE	DIR	REVISIONS	REMARKS	LIGO BEAM TUBE HANFORD, WA AND LIVINGSTON, LA PORTABLE CALIBRATION MODULE PLAN "F"		
BY		CHKD	DATE	DIR	REVISIONS	REMARKS	CUSTOMER'S NO		CONTRACT NO
BY		CHKD	DATE	DIR	REVISIONS	REMARKS	BY RKZ CHKD WAC DATE 3/11/96		953571
BY		CHKD	DATE	DIR	REVISIONS	REMARKS	M. L. TELLALIAN		DWG 103 REV
BY		CHKD	DATE	DIR	REVISIONS	REMARKS	ENGINEERING ASSIGNED		SHT 2 2
LIGO-0961301-02-B									

▶ INDICATES CHANGE FROM PREVIOUS ISSUE

SHIP PC	MARK	ASSM PC	DESCRIPTION	LENGTH		SPEC	ID
				FT	IN		
	103-3-A	1	ROUGHING PUMP TUBE ASSEMBLY (ATTACH TO 103-1-A)				
	103-3-1	1	TUBE 3/4 X 0.035 THK	0	9 1/2	304	PA
	103-3-2	2	NW S.W. FLANGE NOR-CAL #NW-16-SW			304	PA
	103-3-3	1	NW CLAMP, NOR-CAL #NW-16-CP			ALUMINUM	PA
	103-3-4	1	U-BOLT 1/4 DIA FOR 1/2 OD TUBE ZINC PL OR GALV			CS	PE
	103-3-5	2	NUT 1/4 DIA ZINC PL OR GALV			CS	PE

DETAILED AND BILLED FOR (1), (1) REQUIRED



SECTION "A"

APPROVED
M. Talian 10/16/96
 CBI DATE
J. Don 11/14/96
 LIGO DATE

INDICATES CHANGE FROM PREVIOUS ISSUE

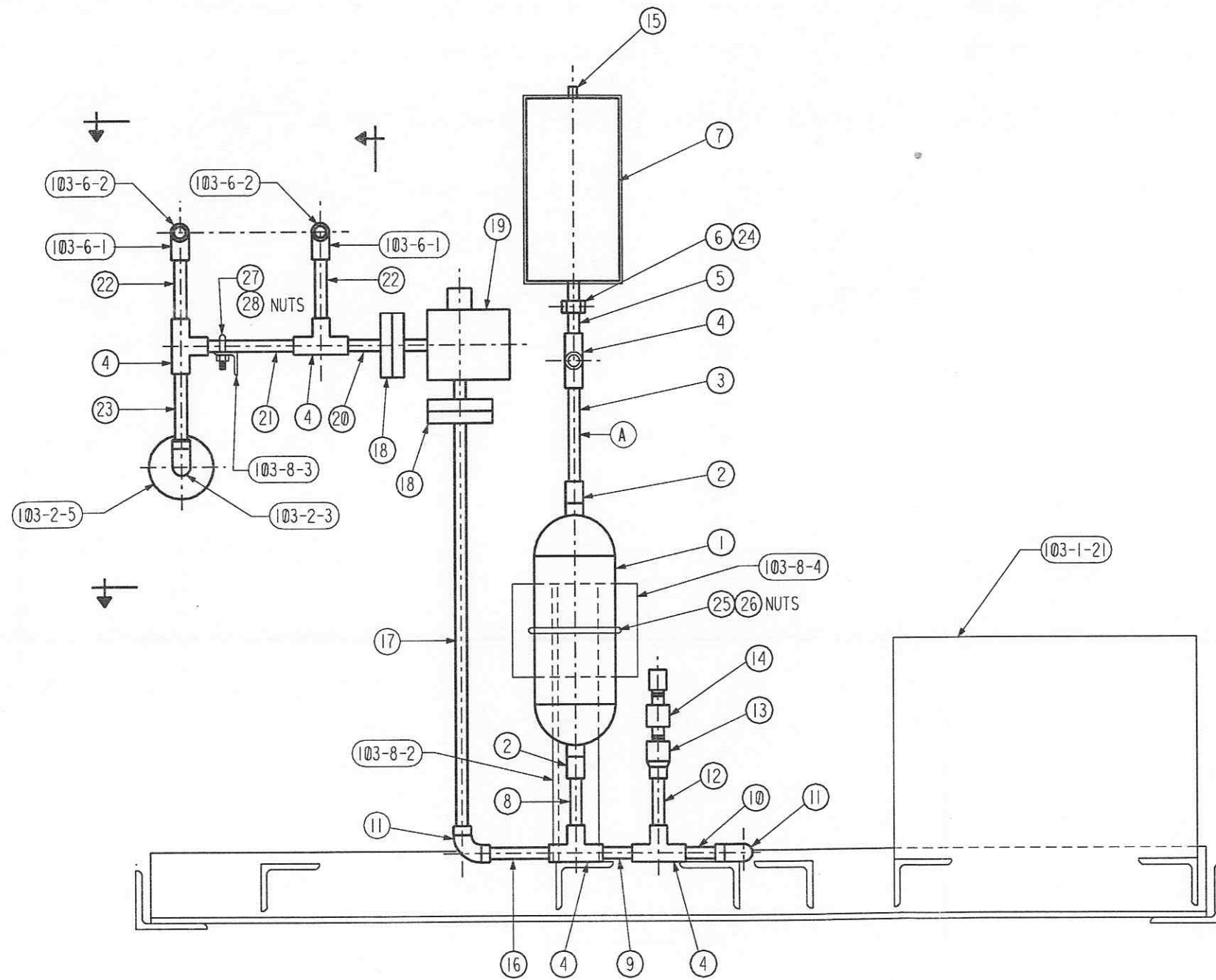
▶ REVISED ENTIRE SHIT.

NOTE:

1. WORK THIS DWG. WITH DRAWING 103 SHIT. 1, 2, 4 THRU 9

BY		DATE		CHKD		DATE		REVISIONS		REMARKS	
<p>CBI</p> <p>LIGO BEAM TUBE HANFORD, WA AND LIVINGSTON, LA</p> <p>PORTABLE CALIBRATION MODULE SECTION "A"</p>										SUPPLIER'S / PURCHASER'S NO 953571	
CUSTOMER'S NO BY <i>RKZ</i> CHKD <i>WAC</i> DATE 3/11/96						CONTRACT NO 953571					
M. L. TELLALIAN ENGINEERING ASSIGNED						DWG 103 SHT 3		REV 2		LIGO-D961301-02-B	

57103103.DGN



SECTION "B"

APPROVED
M. Tellalian 09/16/96 DATE
J. Jones 11/14/96 DATE
 LIGO

INDICATES CHANGE FROM PREVIOUS ISSUE

SHIP PC	MARK	ASSM PC	DESCRIPTION	LENGTH		SPEC	ID
				FT	IN		
	103-4-A	1	MAJOR TUBE ASSEMBLY (ATTACH TO 103-1-A)				
	103-4-1	2	VESSEL, WHITEY #304L-HDF4-1000				PA
	103-4-2	2	MALE CONNECTOR 1/4 MNPT X 1/2 TUBE CAJON #SS-8-TSW-1-4			316	PA
	103-4-3	1	TUBE 1/2 DIA X 0.035 THK	0	4 3/4	304	PA
	103-4-4	5	WELDING TEE 1/2 DIA CAJON #SS-8-TSW-3			316	PA
	103-4-5	1	MALE WELD GLAND 1/2 DIA CAJON #SS-8-VCR-3-BMTW			316	PA
	103-4-6	1	MALE NUT 1/2 DIA, CAJON #SS-8-VCR-4			316	PA
	103-4-7	1	VACUUM GAUGE MKS TYPE 120				PC
	103-4-8	1	TUBE 1/2 DIA X 0.035 THK	0	2 3/4	304	PA
	103-4-9	1	TUBE 1/2 DIA X 0.035 THK	0	2	304	PA
	103-4-10	1	TUBE 1/2 DIA X 0.035 THK	0	4 5/16	304	PA
	103-4-11	2	WELD ELBOW 1/2 DIA, CAJON #SS-8-TSW-9			316	PA
	103-4-12	1	TUBE 1/2 DIA X 0.035 THK	0	2 3/4	304	PA
	103-4-13	1	FEMALE CONNECTOR 1/2 TUBE X 1/2 FNPT, CAJON #SS-8-TSW-7-8			316	PA
	103-4-14	1	RELIEF VALVE 1/2 DIA NUPRO #SS-8C2-RD-10			SS	PC
	103-4-15	1	PLUG 1/2 DIA, CAJON #SS-8-VCR-P			316	PA
	103-4-16	1	TUBE 1/2 DIA X 0.035 THK	0	1 3/4	304	PA
	103-4-17	1	TUBE 1/2 DIA X 0.035 THK	1	6	304	PA
	103-4-18	2	FLG 2.75 CF BORED FOR 1/2 DIA TUBE			304	PA
	103-4-19	1	VARIABLE LEAK VALVE K. J. LASKER #VZMD6MR				PC
	103-4-20	1	TUBE 1/2 DIA X 0.035 THK	0	1 1/2	304	PA
	103-4-21	1	TUBE 1/2 DIA X 0.035 THK	0	6 3/8	304	PA
	103-4-22	2	TUBE 1/2 DIA X 0.035 THK	0	3 1/4	304	PA
	103-4-23	1	TUBE 1/2 DIA X 0.035 THK	0	1 1/2	304	PA
	103-4-24	1	VCR GASKET 1/2 DIA CAJON #SS-VCR-2-GR			SS	PA
	103-4-25	1	U-BOLT 3/8 DIA FOR 3 DIA PIPE ZINC PL OR GALV			CS	PE
	103-4-26	2	NUT 3/8 DIA ZINC PL OR GALV			CS	PE
	103-4-27	1	U-BOLT 1/4 DIA FOR 1/2 O D TUBE ZINC PL OR GALV			CS	PE
	103-4-28	2	NUT 1/4 DIA ZINC PL OR GALV			CS	PE

DETAILED AND BILLED FOR (1), (1) REQUIRED

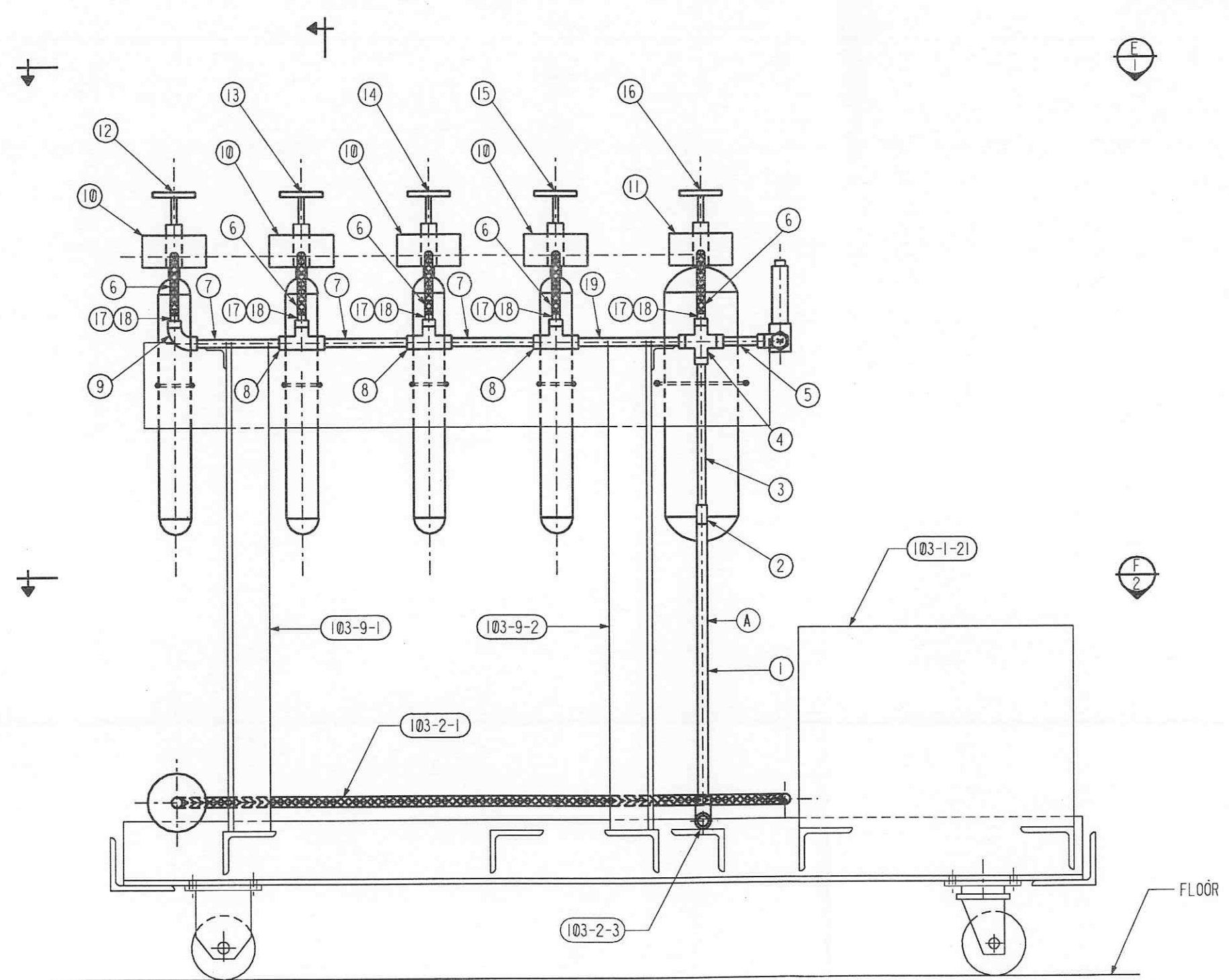
▶ REVISED ENTIRE SHIT.

NOTE:

1. WORK THIS DWG. WITH DRAWING 103 SHIT. 1, 2, 3, 5 THRU 9

CBI		SUPPLIER'S / PURCHASER'S NO	
LIGO BEAM TUBE HANFORD, WA AND LIVINGSTON, LA			
PORTABLE CALIBRATION MODULE SECTION "B"			
CUSTOMER'S NO		CONTRACT NO	
BY RKZ CHKD WAC DATE 3/11/96		953571	
M. L. TELLALIAN ENGINEERING ASSIGNED		DWG 103	REV 2
		SHT 4	
LIGO-D961301-02-B			

57104103.DGN



NOTE: (103-7-4) NOT SHOWN FOR CLARITY

SECTION "C"

APPROVED
M. Tellalian 4/16/96
 DATE
J. Jones 11/14/96
 DATE
 LIGO

INDICATES CHANGE FROM PREVIOUS ISSUE

SHIP PC	MARK	ASSM PC	DESCRIPTION	LENGTH		SPEC	ID
				FT	IN		
	103-5-A	1	TEST BOTTLE TUBE ASSEMBLY (ATTACH TO 103-1-A)				
	103-5-1	1	TUBE 1/2 DIA X 0.035 THK	1	1 1/4	304	PA
	103-5-2	1	ADAPTER 1/2 X 3/8 CAJON #SS-8-MTW-A-6TSW			316	PA
	103-5-3	1	TUBE 3/8 DIA X 0.035 THK	0	5	304	PA
	103-5-4	1	CROSS 3/8 DIA, CAJON #SS-6-TSW-4			316	PA
	103-5-5	1	TUBE 3/8 DIA X 0.035 THK	0	2 1/4	304	PA
	103-5-6	5	FLEXHOSE 1/4 DIA SWAGELOCK #SS-4HO-1-4-S4				
	103-5-7	3	TUBE 3/8 DIA X 0.035 THK	0	4 9/16	304	PA
	103-5-8	3	TEE 3/8 DIA, CAJON #SS-6-TSW-3			316	PA
	103-5-9	1	ELBOW 3/8 DIA CAJON #SS-6-TSW-9			316	PA
	103-5-10	4	LECTURE BOTTLE REGULATOR MATHESON #3322-170 W/2-15 PSI GAGE			SS	PC
	103-5-11	1	SINGLE STAGE REGULATOR MATHESON #3537-580			SS	PC
	103-5-12	1	HELIUM LECTURE BOTTLE			SS	PA
	103-5-13	1	CO LECTURE BOTTLE			SS	PA
	103-5-14	1	CO2 LECTURE BOTTLE			SS	PA
	103-5-15	1	CH4 LECTURE BOTTLE			SS	PA
	103-5-16	1	KRYPTON 6B BOTTLE (MATHESON)			SS	PA
	103-5-17	5	TUBE 3/8 DIA X .035 THICK	0	1 5/8	304	PA
	103-5-18	5	FEMALE CONNECTOR 3/8 TUBE X 1/4 NPT CAJON #SS-6-TSW-7-4			316	PA
	103-5-19	1	TUBE 3/8 DIA X .035 THICK	0	5 11/16	304	PA

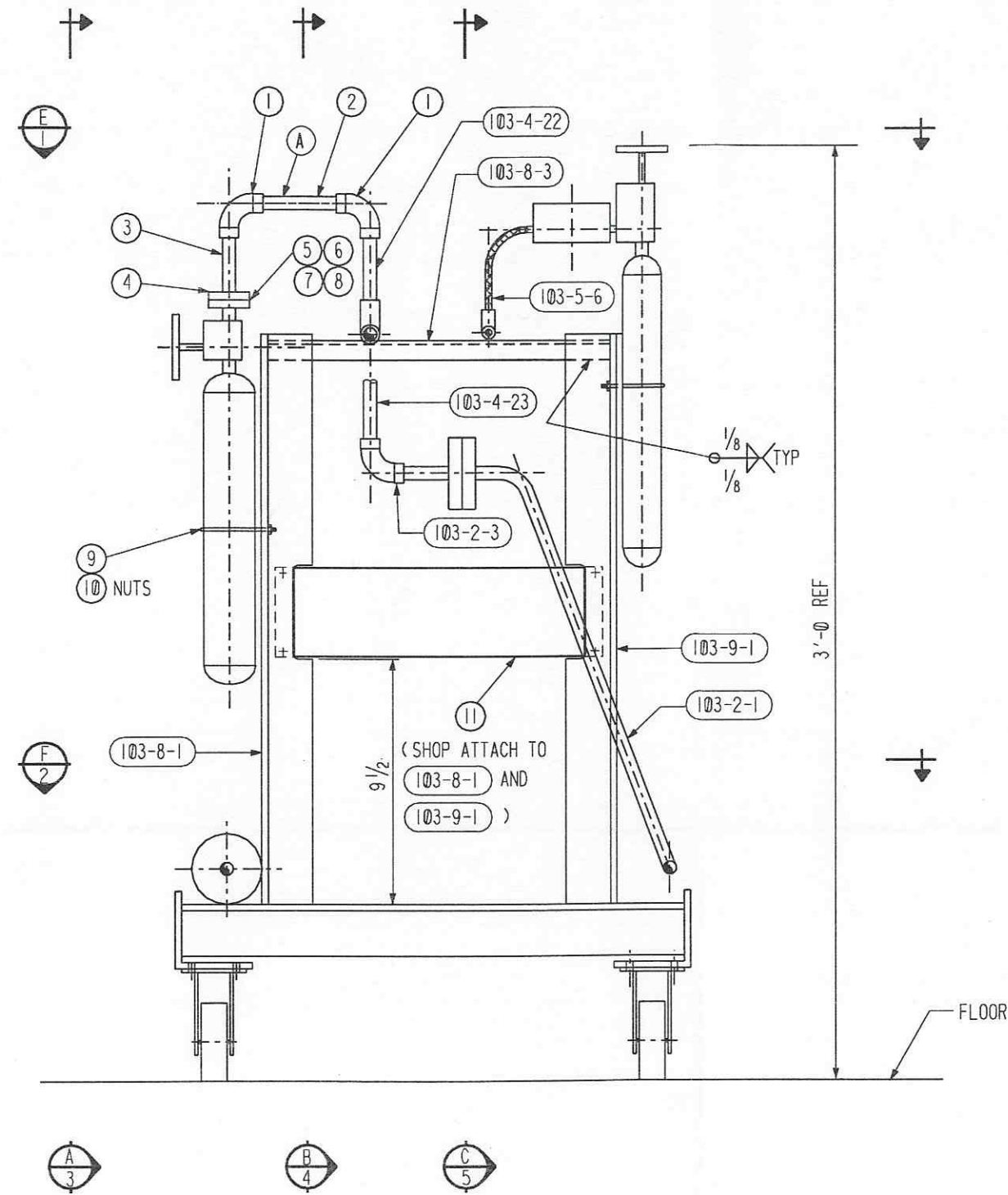
DETAILED AND BILLED FOR (1), (1) REQUIRED

REVISD ENTIRE SHT.

NOTE:
 1. WORK THIS DWG. WITH DRAWING 103 SHT. 1 THRU 4 AND 6 THRU 9

BY		DATE		CHKD		DATE		REVISIONS		REMARKS	
<p>CBI</p> <p>LIGO BEAM TUBE HANFORD, WA AND LIVINGSTON, LA</p> <p>PORTABLE CALIBRATION MODULE SECTION "C"</p>										SUPPLIER'S / PURCHASER'S NO	
CUSTOMER'S NO BY RKZ CHKD WAC DATE 3/11/96 M. L. TELLALIAN ENGINEERING ASSIGNED										CONTRACT NO 953571	
LIGO - D961301-02-B										DWG 103 SHT 5 REV 2	

57105103.DGN



SECTION "D"

APPROVED
M. Tellohan 10/16/96
 DATE
J. Jones 11/14/96
 DATE
 LIGO

INDICATES CHANGE FROM PREVIOUS ISSUE

SHIP PC	MARK	ASSM PC	DESCRIPTION	LENGTH		SPEC	ID
				FT	IN		
	103-6-A	1	CALIBRATED LEAK TUBE ASSEMBLY (ATTACH TO 103-1-A)				
	103-6-1	4	WELD ELBOW 1/2 DIA CAJON #SS-8-TSW-9			316	PA
	103-6-2	2	TUBE 1/2 DIA X 0.035 THK	0	4 1/16	304	PA
	103-6-3	2	TUBE 1/2 DIA X 0.035 THK	0	4	304	PA
	103-6-4	2	FLG 2.75 CF BORED FOR 1/2 DIA TUBE			304	PA
	103-6-5	3	GASKET 2.75 CF (INCLUDES 1 SPARE)			COPPER	PA
	103-6-6	15	BOLT 1/4-28 (INCLUDES 3 SPARES)	0	1 1/4	SS	PE
	103-6-7	8	PLATE NUT 1/4 DIA (INCLUDES 2 SPARES)			SS	PE
	103-6-8	20	WASHER 1/4 DIA (INCLUDES 8 SPARES)			SS	PE
	103-6-9	2	U-BOLT 3/8 DIA FOR 3 DIA PIPE ZINC PL OR GALV			CS	PE
	103-6-10	4	NUT 3/8 DIA ZINC PL OR GALV			CS	PE
	103-6-11	1	POWER SUPPLY/READOUT MKS TYPE 510 (USED WITH 103-4-7)				PC

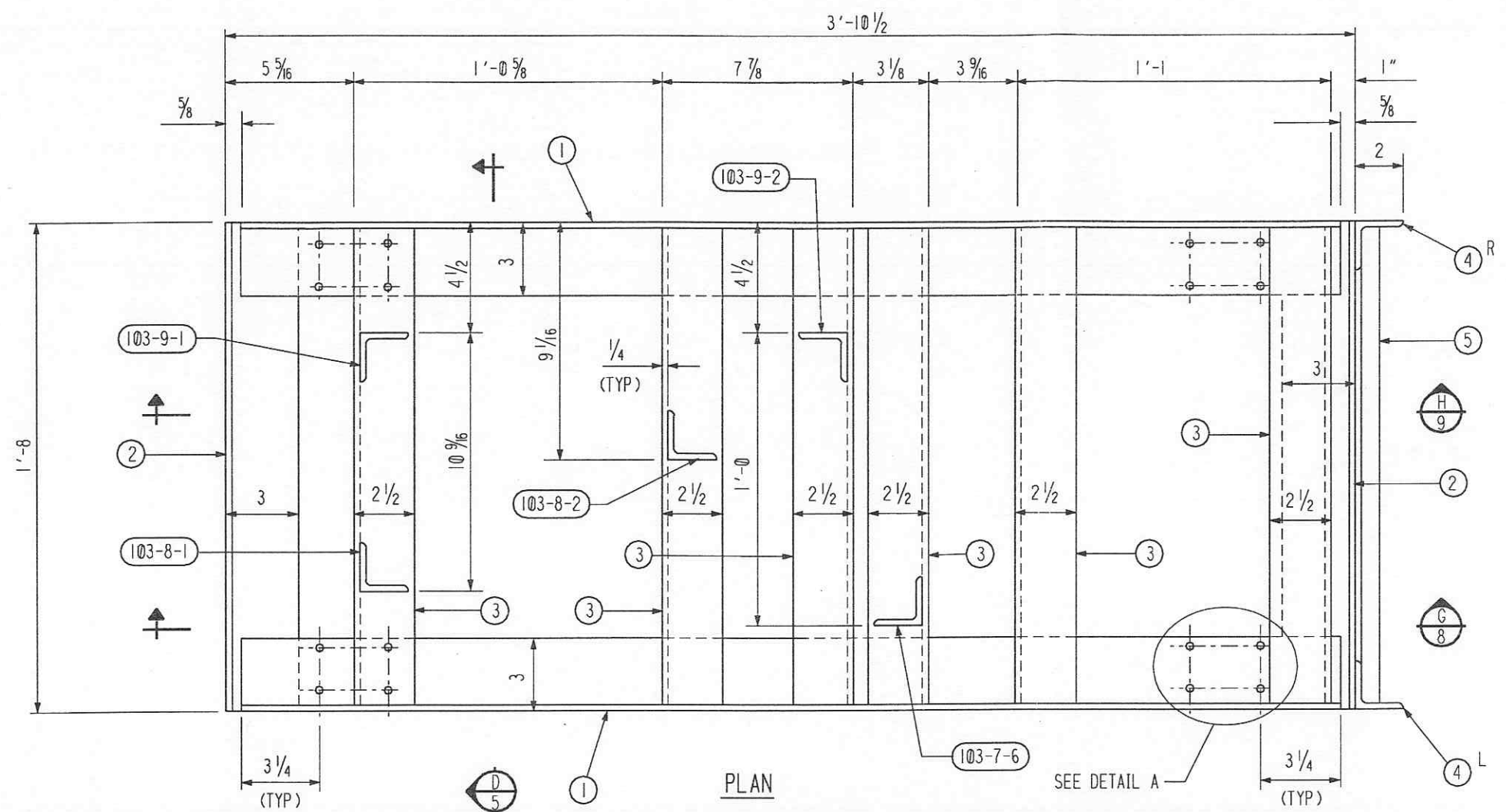
DETAILED AND BILLED FOR (1), (1) REQUIRED

▶ REVISED ENTIRE SHT.

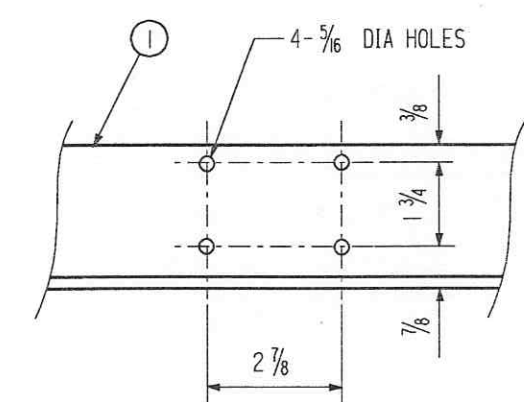
NOTE:

1. WORK THIS DWG. WITH DRAWING 103 SHT. 1 THRU 5, 7 THRU 9

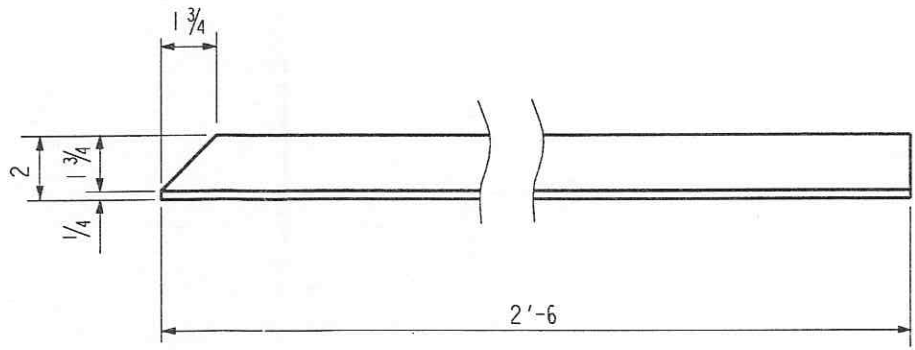
BY		CHKD	DATE	DIR	DATE	REVISIONS	REMARKS	CBI		SUPPLIER'S / PURCHASER'S NO
BY		CHKD	DATE	DIR	DATE	REVISIONS	REMARKS	LIGO BEAM TUBE HANFORD, WA AND LIVINGSTON, LA PORTABLE CALIBRATION MODULE SECTION "D"		
BY		CHKD	DATE	DIR	DATE	REVISIONS	REMARKS	CUSTOMER'S NO		CONTRACT NO
BY		CHKD	DATE	DIR	DATE	REVISIONS	REMARKS	BY RKZ CHKD WAC DATE 3/11/96		953571
BY		CHKD	DATE	DIR	DATE	REVISIONS	REMARKS	M. L. TELLALIAN ENGINEERING ASSIGNED		DWG 103 SHT 6
BY		CHKD	DATE	DIR	DATE	REVISIONS	REMARKS	REV 2		
LIGO-D961301-02-B										



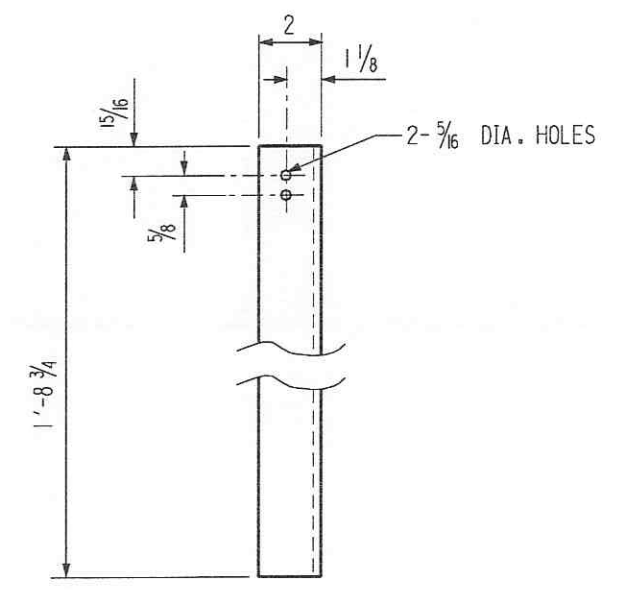
PLAN



DETAIL A
(TYP 4 PLACES)



PC 4 R/L



PC 6

SHIP PC	MARK	ASSM PC	DESCRIPTION	LENGTH		SPEC	ID
				FT	IN		
	103-7-A	1	CALIBRATION MODULE FRAME ASSEMBLY (ATTACH TO 103-1-A)				
	103-7-1	2	L 3 X 3 X 1/4 X SK	3	9 1/4	A36	PE
	103-7-2	2	L 3 X 2 1/2 X 1/4	1	8	A36	PE
	103-7-3	6	L 2 1/2 X 2 X 1/4	1	7 1/2	A36	PE
	103-7-4	2	L 2 1/2 X 2 X 1/4 X SK	2	6	A36	PE
	103-7-5	1	BAR 3/4 DIA	1	6 1/4	A36	PE
	103-7-6	1	L 2 X 2 X 1/4 X SK	1	8 3/4	A36	PE
	103-7-7	2	RIGID CASTERS 3 X 1 1/4 400# MEDIUM DUTY CASTER, MCMASTER-CARR CATALOG #9949T79				
	103-7-8	2	SWIVEL CASTERS WITH WRAPAROUND BRAKE 3 X 1 1/4 400# MEDIUM DUTY CASTER, MCMASTER-CARR CATALOG #9949T54				
	103-7-9	16	BOLT 1/4 DIA HEX	0	1 3/4	A307 GALV	PE
	103-7-10	16	NUT 1/4 DIA HEX			A307 GALV	PE
	103-8-A	1	CALIBRATED LEAK SUPPORT ASSEMBLY				
	103-8-B	1	VACUUM GAGE SUPPORT ASSEMBLY				
	103-9-A	1	TEST GAS SUPPORT ASSEMBLY				

DETAILED AND BILLED FOR (1), (1) REQUIRED

NOTE:

1. WORK THIS DWG. WITH DRAWING 103 SHT. 1 THRU 6, 8 AND 9

APPROVED
M. Tellalian 10/16/96
DATE
J. CBI 11/14/96
DATE
LIGO

▶ REVISED ENTIRE SHT.

▶ INDICATES CHANGE FROM PREVIOUS ISSUE

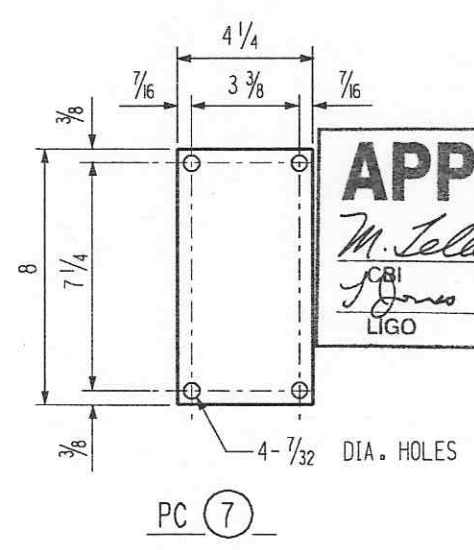
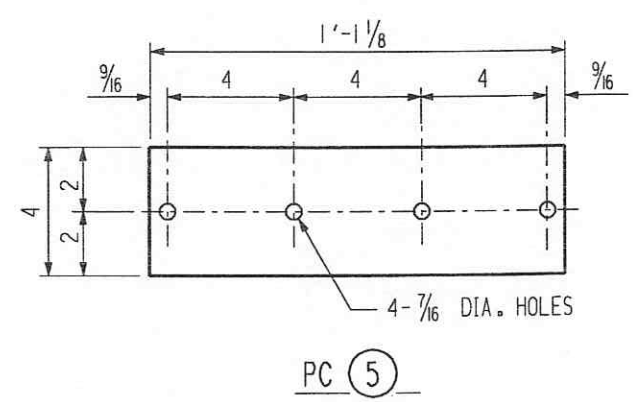
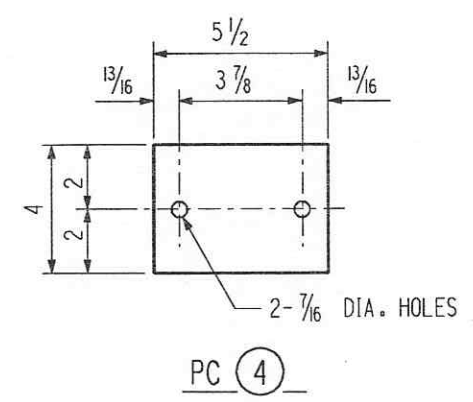
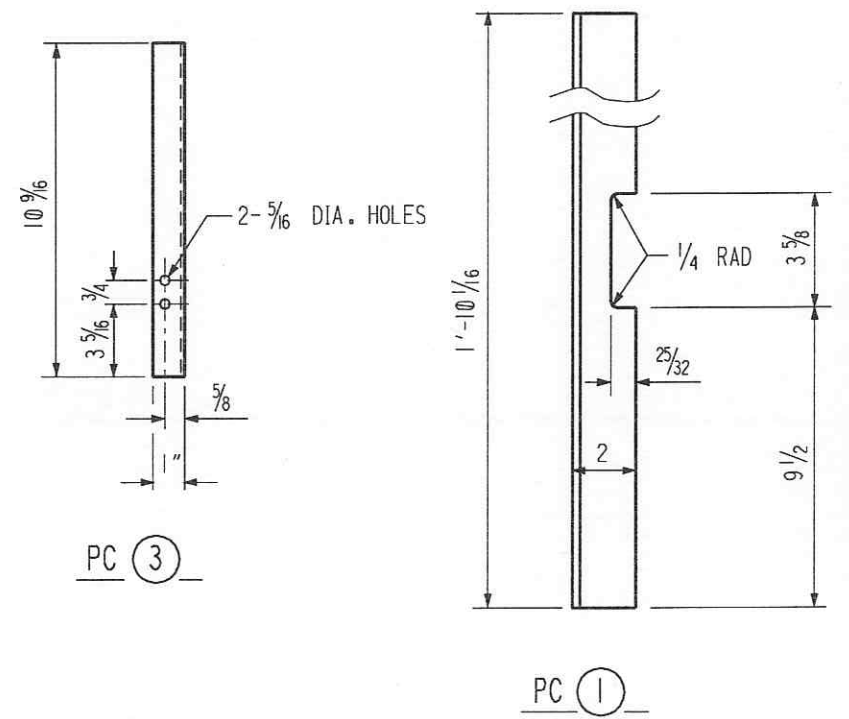
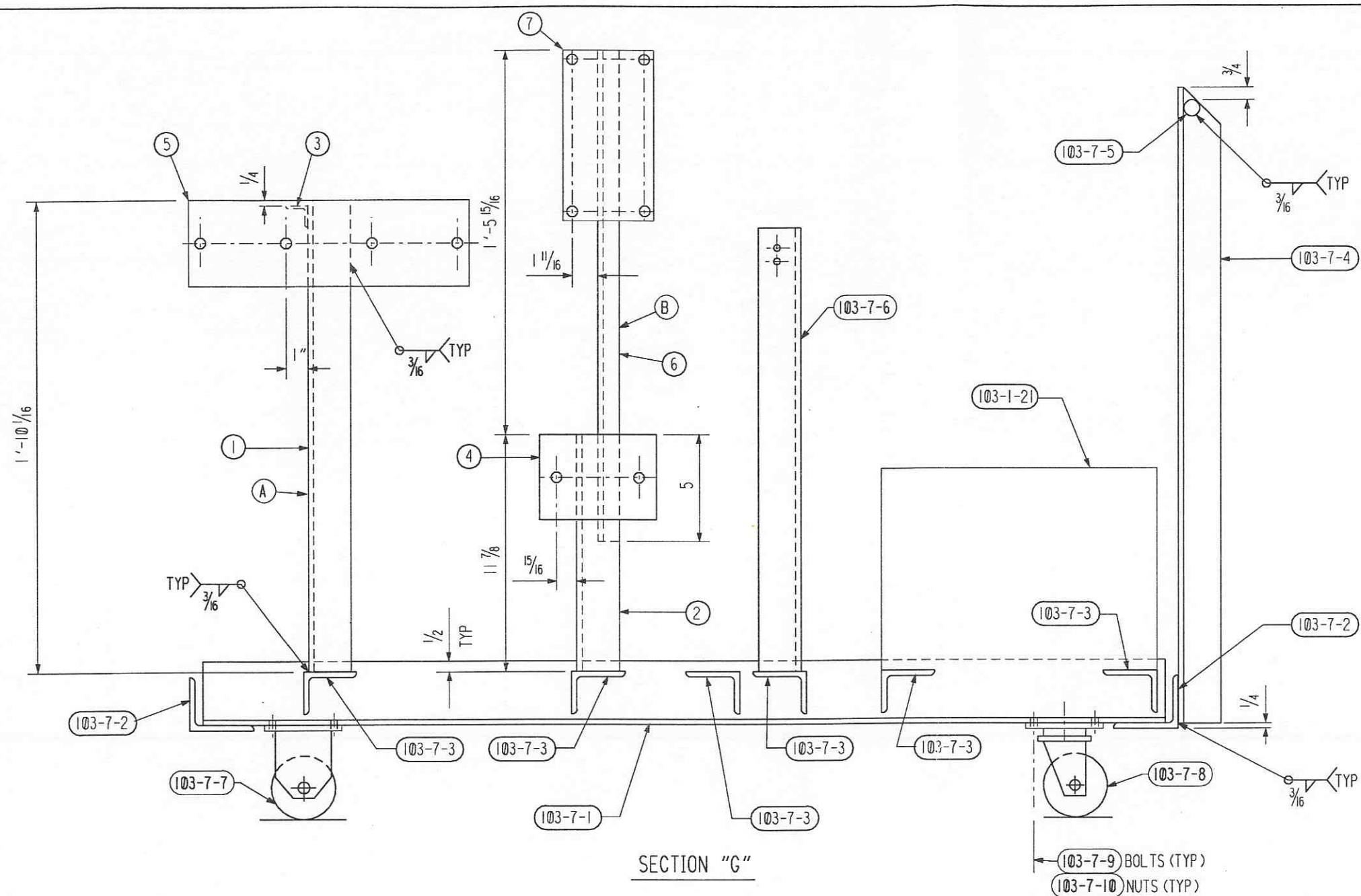
REVISIONS		REMARKS	
BY	CHKD	DATE	DATE
DATE	DATE	DATE	DATE
DATE	DATE	DATE	DATE
DATE	DATE	DATE	DATE

		SUPPLIER'S / PURCHASER'S NO	
LIGO BEAM TUBE HANFORD, WA AND LIVINGSTON, LA			
PORTABLE CALIBRATION MODULE STRUCTURAL - PLAN			
CUSTOMER'S NO		CONTRACT NO	
BY RKZ CHKD WAC DATE 3/11/96		953571	
M. L. TELLALIAN		DWG 103	REV 2
ENGINEERING ASSIGNED		SHT 7	
LIGO-D961301-02-B			

57107103.DGN

SHIP PC	MARK	ASSM PC	DESCRIPTION	LENGTH		SPEC	ID
				FT	IN		
	103-8-A	1	CALIBRATED LEAK SUPPORT ASSEMBLY (ATTACH TO 103-1-A)				
	103-8-1	1	L 2 X 2 X 1/4 X SK	1	10 1/16	A36 GALV	PE
	103-8-3	1	L 1 X 1 X 1/8 X SK	0	10 9/16	A36 GALV	PE
	103-8-5	1	PL 4 X 1/4 X SK	1	1 1/8	A36 GALV	PE
	103-8-B	1	VACUUM GAGE SUPPORT ASSEMBLY (ATTACH TO 103-1-A)				
	103-8-2	1	L 2 X 2 X 1/4	0	11 7/8	A36 GALV	PE
	103-8-4	1	PL 4 X 9/16 X SK	0	5 1/2	A36 GALV	PE
	103-8-6	1	L 1 X 1 X 1/8	1	10 15/16	A36 GALV	PE
	103-8-7	1	PL 4 1/4 X 1/4 X SK	0	8	A36 GALV	PE

DETAILED AND BILLED FOR (1), (1) REQUIRED



APPROVED
M. Tellalian 10/16/96
 CBI DATE
J. Jones 11/14/96
 LIGO DATE

▶ REVISED ENTIRE SHIT.

NOTE :

1. WORK THIS DWG. WITH DRAWING 103 SHIT. 1 THRU 6, 7 AND 9

REVISIONS		REMARKS	
BY	CHKD	DATE	DATE
DATE	DATE	DATE	DATE
BY	CHKD	DATE	DATE
DATE	DATE	DATE	DATE
BY	CHKD	DATE	DATE
DATE	DATE	DATE	DATE

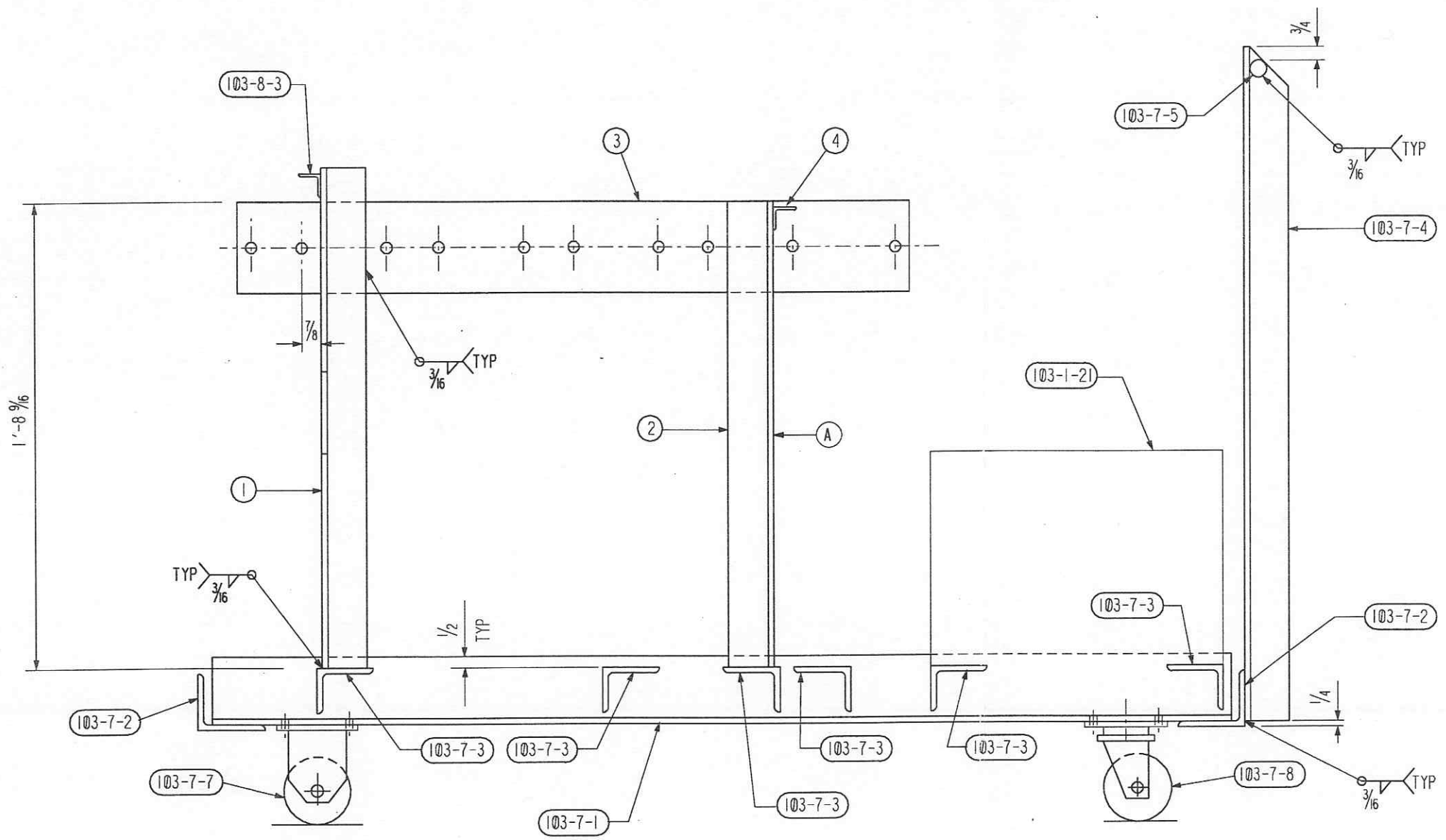
CBI		SUPPLIER'S / PURCHASER'S NO.	
LIGO BEAM TUBE HANFORD, WA AND LIVINGSTON, LA			
PORTABLE CALIBRATION MODULE STRUCTURAL - SECTION "A"			
CUSTOMER'S NO.		CONTRACT NO.	
BY RKZ_CHKD WAC DATE 3/11/96		953571	
M. L. TELLALIAN		DWG 103	REV 2
ENGINEERING ASSIGNED		SHIT 8	
LIGO-D961301-02-B			

▶ INDICATES CHANGE FROM PREVIOUS ISSUE

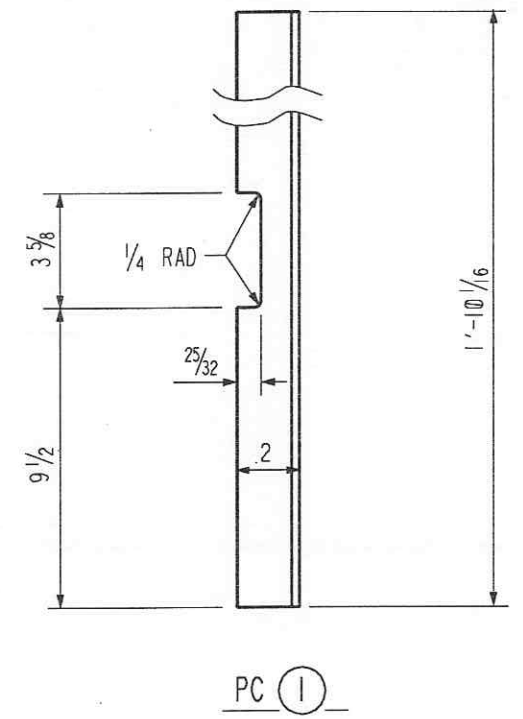
57108103.DGN

SHIP PC	MARK	ASSM PC	DESCRIPTION	LENGTH		SPEC	ID
				FT	IN		
	103-9-A	1	TEST GAS SUPPORT ASSEMBLY (ATTACH TO 103-1-A)				
	103-9-1	1	L 2 X 2 X 1/4 X SK	1	10 1/16	A36 GALV PE	
	103-9-2	1	L 2 X 2 X 1/4	1	8 9/16	A36 GALV PE	
	103-9-3	1	PL 4 X 1/4	2	5 3/4	A36 GALV PE	
	103-9-4	1	L 1 X 1 X 1/8	0	5 3/8	A36 GALV PE	

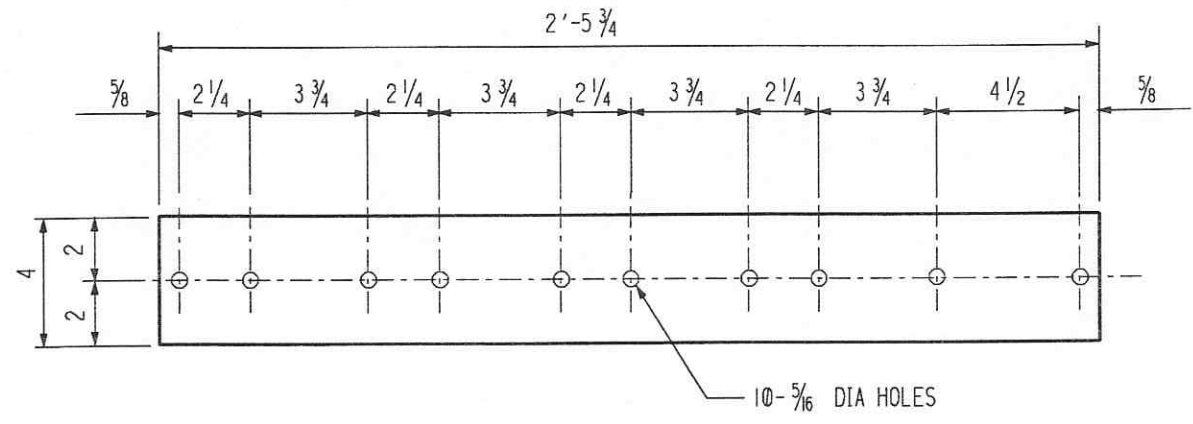
DETAILED AND BILLED FOR (1), (1) REQUIRED



SECTION "H"



PC (1)



PC (2)

APPROVED
M. Tellalian 10/16/96
 DATE
J. Jones 11/14/96
 DATE
 LIGO

INDICATES CHANGE FROM PREVIOUS ISSUE

REVISD ENTIRE SHT.

NOTE:

1. WORK THIS DWG. WITH DRAWING 103 SHT. 1 THRU 8

BY		CHKD	DATE	DIR	REVISED ENTIRE SHT.	REMARKS		CBI		SUPPLIER'S / PURCHASER'S NO	
BY	DATE	CHKD	DATE	DIR	REVISED ENTIRE SHT.	REMARKS		LIGO BEAM TUBE HANFORD, WA AND LIVINGSTON, LA		CUSTOMER'S NO	
BY	DATE	CHKD	DATE	DIR	REVISED ENTIRE SHT.	REMARKS		PORTABLE CALIBRATION MODULE STRUCTURAL - SECTION "B"		CONTRACT NO	
BY	DATE	CHKD	DATE	DIR	REVISED ENTIRE SHT.	REMARKS		BY RKZ CHKD WAC DATE 3/11/96		953571	
BY	DATE	CHKD	DATE	DIR	REVISED ENTIRE SHT.	REMARKS		M. L. TELLALIAN		DWG 103	
BY	DATE	CHKD	DATE	DIR	REVISED ENTIRE SHT.	REMARKS		ENGINEERING ASSIGNED		SHT 9	
BY	DATE	CHKD	DATE	DIR	REVISED ENTIRE SHT.	REMARKS		LIGO-D961301-02-B		REV 2	

57109103.DGN