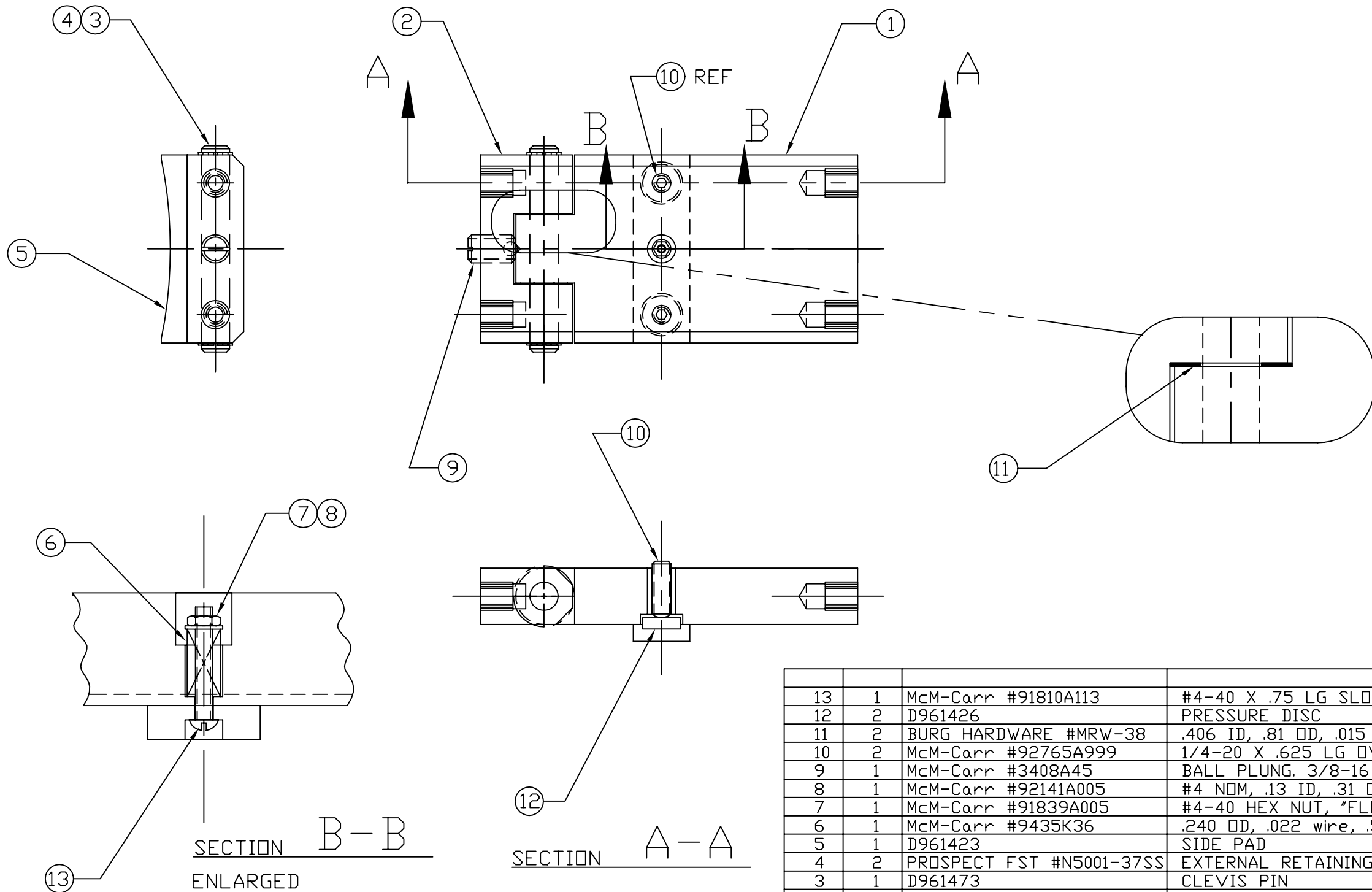


NOTES: (UNLESS OTHERWISE SPECIFIED)  
 ▲ FOR VENDOR INFORMATION, SEE TOP ASSEMBLY MATERIALS LIST D970006 OR D970007.



REF	QTY	PART or DRWG No.	NOMENCLATURE or DESCRIPTION	MATERIAL
13	1	McM-Carr #91810A113	#4-40 X .75 LG SLOTTED RD HD SCR	stainless steel
12	2	D961426	PRESSURE DISC	-
11	2	BURG HARDWARE #MRW-38	.406 ID, .81 OD, .015 THK FLAT WASH	MYLAR
10	2	McM-Carr #92765A999	1/4-20 X .625 LG OVAL POINT SOC SET SCR	stainless steel
9	1	McM-Carr #3408A45	BALL PLUNG. 3/8-16 X .62LG .19 BALL 5-10#	stainless steel
8	1	McM-Carr #92141A005	#4 NDM, .13 ID, .31 OD, .032 THK FL WASH	stainless steel
7	1	McM-Carr #91839A005	#4-40 HEX NUT, "FLEXLOC"	stainless steel
6	1	McM-Carr #9435K36	.240 OD, .022 wire, .56 F.L. comp. spring	stainless steel
5	1	D961423	SIDE PAD	-
4	2	PROSPECT FST #N5001-37SS	EXTERNAL RETAINING RING, 3/8 SHAFT	stainless steel
3	1	D961473	CLEVIS PIN	-
2	1	D961440	STANDOFF BRACKET	-
1	1	D961442	HINGED STANDOFF	-
REF	QTY	PART or DRWG No.	NOMENCLATURE or DESCRIPTION	MATERIAL

PARTS and MATERIAL LIST ▲

		UNLESS OTHERWISE SPECIFIED DIMENSIONS ARE IN INCHES											LIGO CALIFORNIA INSTITUTE OF TECHNOLOGY MASSACHUSETTS INSTITUTE OF TECHNOLOGY	
		TOLERANCES: FRACTIONAL ± ANGULAR ± ANGULARMACH ± BEND ± TWO PLACE DECIMAL ±			THREE PLACE DECIMAL ± FINISHED SURFACE RMS BREAK CORNERS IN OUT REMOVE ALL BURRS			B DCN No. E970060		CDYNE CONLEY 5-7-97				LARGE CORE OPTIC COMPONENT CARRIER HINGED STANDOFF ASSEMBLY
		MATERIAL:			HEAT TREAT:			A DCN No. E960157		CDYNE KABOT 2-14-97				
DWG. NO.		DESCRIPTION			FINISH:			01 RELEASE FOR FAB						CAD FILE D961444-B.dwg
REFERENCE DRAWINGS		USED ON:			NEXT ASS'Y: D961460			pA PRELIMINARY RELEASE						
								00 PRE-RELEASE		KABOT 12-16-96		SCALE NTS		SHEET 1 OF 1
								REV DESCRIPTION		DCC SYS DET CDS VE CC BT CHECK DRWN DATE		ISSUE DESCRIPTION		