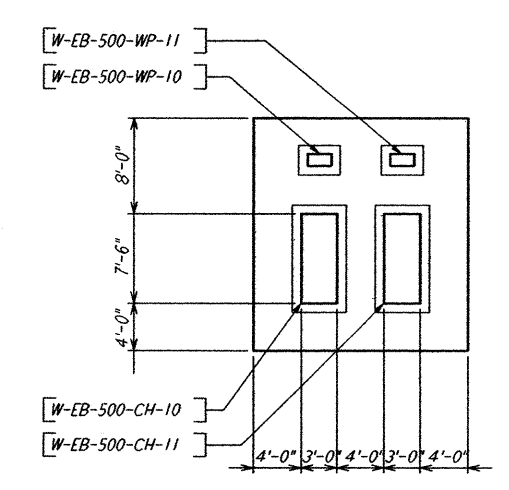
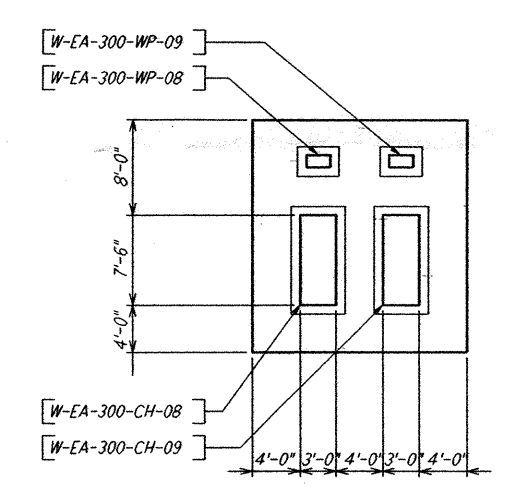


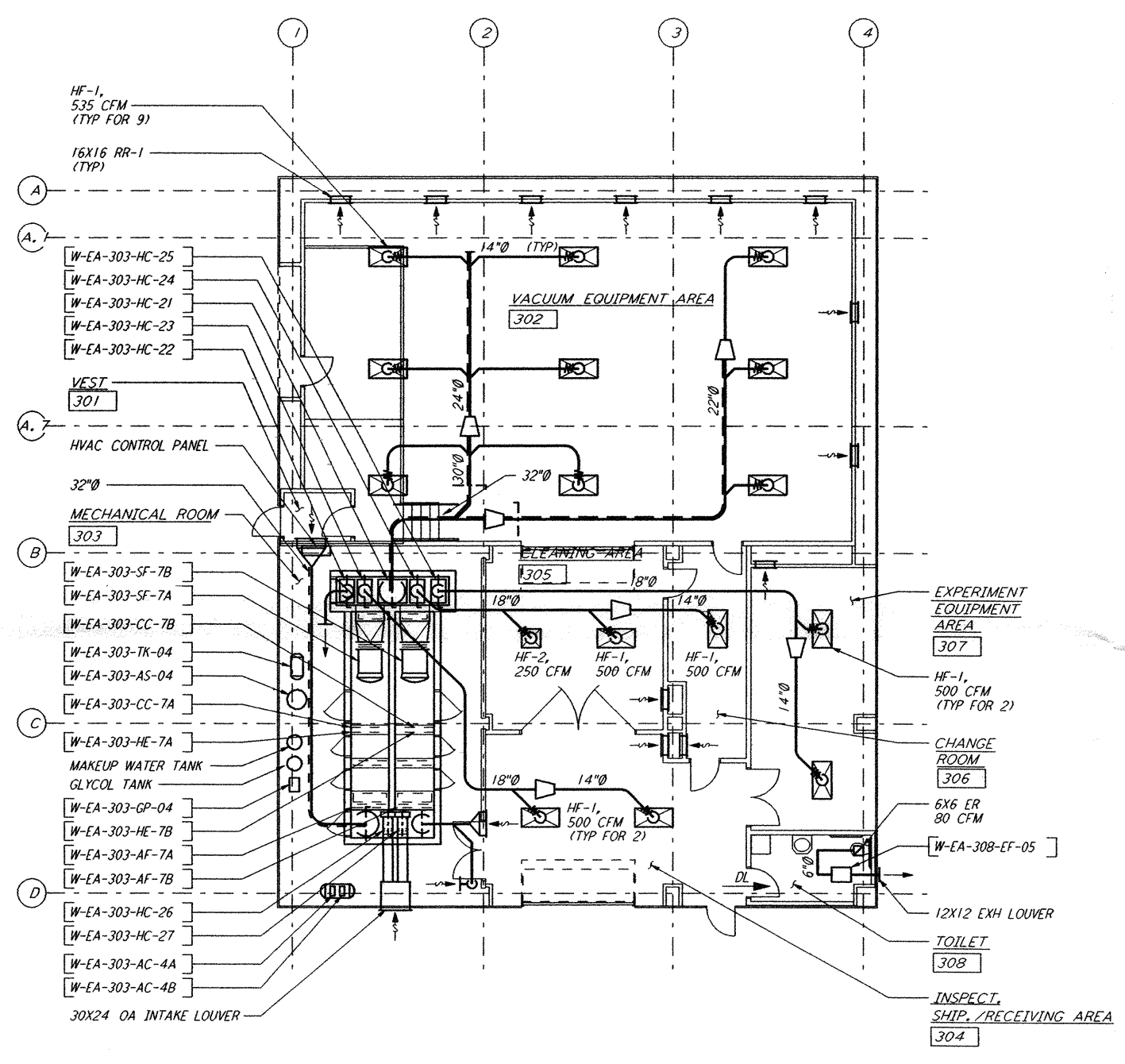
This document and the design it covers are the property of PARSONS. They are loaned only with the borrower's expressed written agreement that they will not be reproduced, copied, loaned, exhibited, or used in any other way, except by written consent from PARSONS to the borrower.



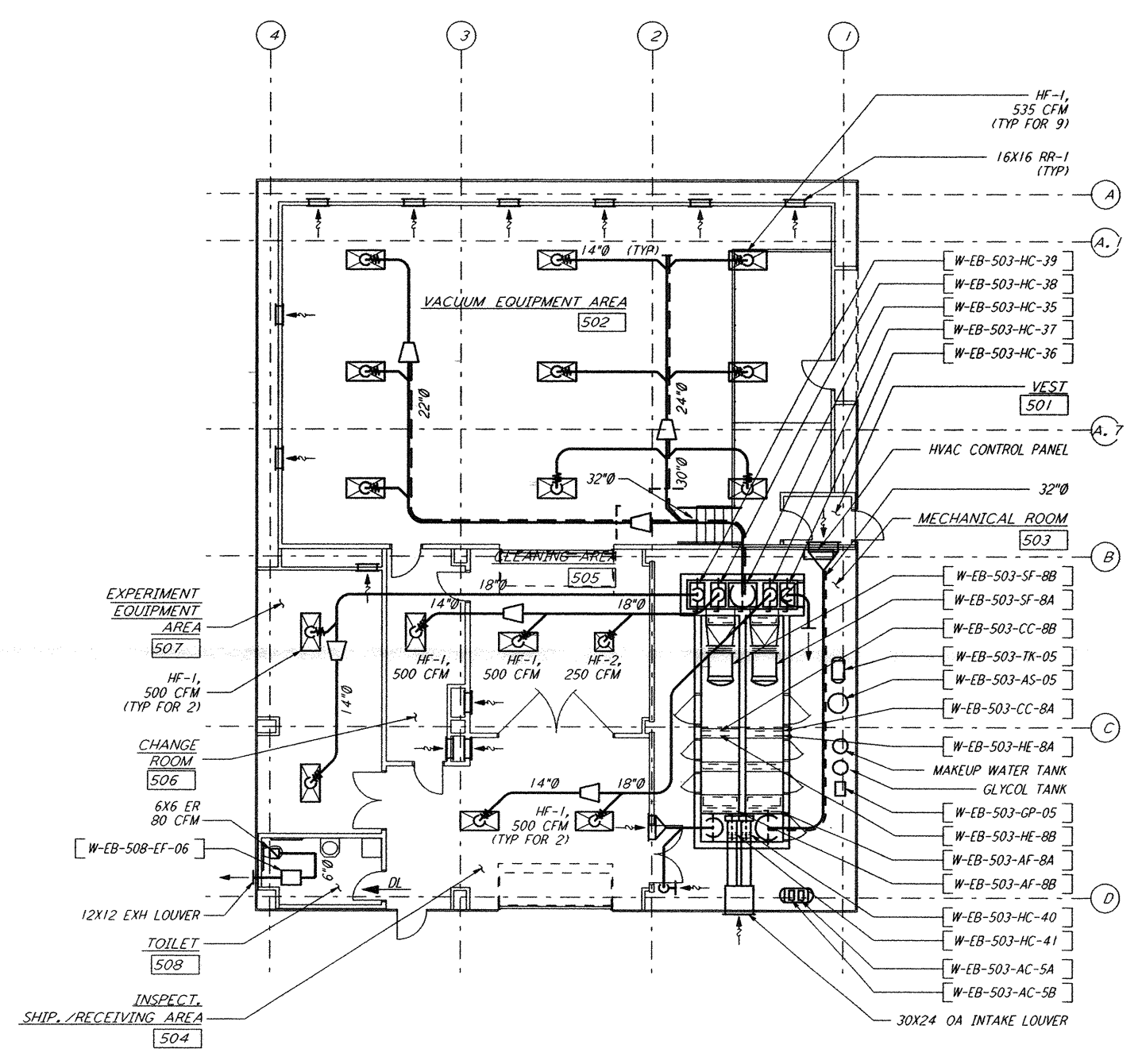
END STATION "B" CHILLER YARD PLAN
 $\frac{1}{8}'' = 1'-0''$



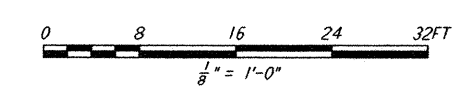
END STATION "A" CHILLER YARD PLAN
 $\frac{1}{8}'' = 1'-0''$



END STATION "A" FLOOR PLAN
 $\frac{1}{8}'' = 1'-0''$



END STATION "B" FLOOR PLAN
 $\frac{1}{8}'' = 1'-0''$



NO.	DATE	APRD BY	DESCRIPTION OF REVISION
9			
8			
7			
6			
5			
4			
3			
2			
1			

NO.	DATE	APRD BY	DESCRIPTION OF REVISION
A	10/31/95	TDM	PRELIMINARY DESIGN REVIEW ISSUED FOR

DATE	10/31/95
DRAWN	CLP
CHECKED	
ENGINEER	
PROJ MGR	

PARSONS
 100 WEST WALNUT STREET
 PASADENA, CALIFORNIA

LIGO
 CALIFORNIA INSTITUTE OF TECHNOLOGY
 MASSACHUSETTS INSTITUTE OF TECHNOLOGY

LASER INTERFEROMETER
 GRAVITATIONAL-WAVE OBSERVATORY
 SITE NO. 1 - HANFORD, WASHINGTON

TITLE: END STATION FLOOR PLAN AND END STATION CHILLER YARD PLAN

AS NOTED PPI50969 8094

SHEET NUMBER: **WA-H-311**

Mon Oct 30 21:28:12 1995 S3-V18B2 J:\PLOTS\QUEUES\18B2\MU311F.PRF