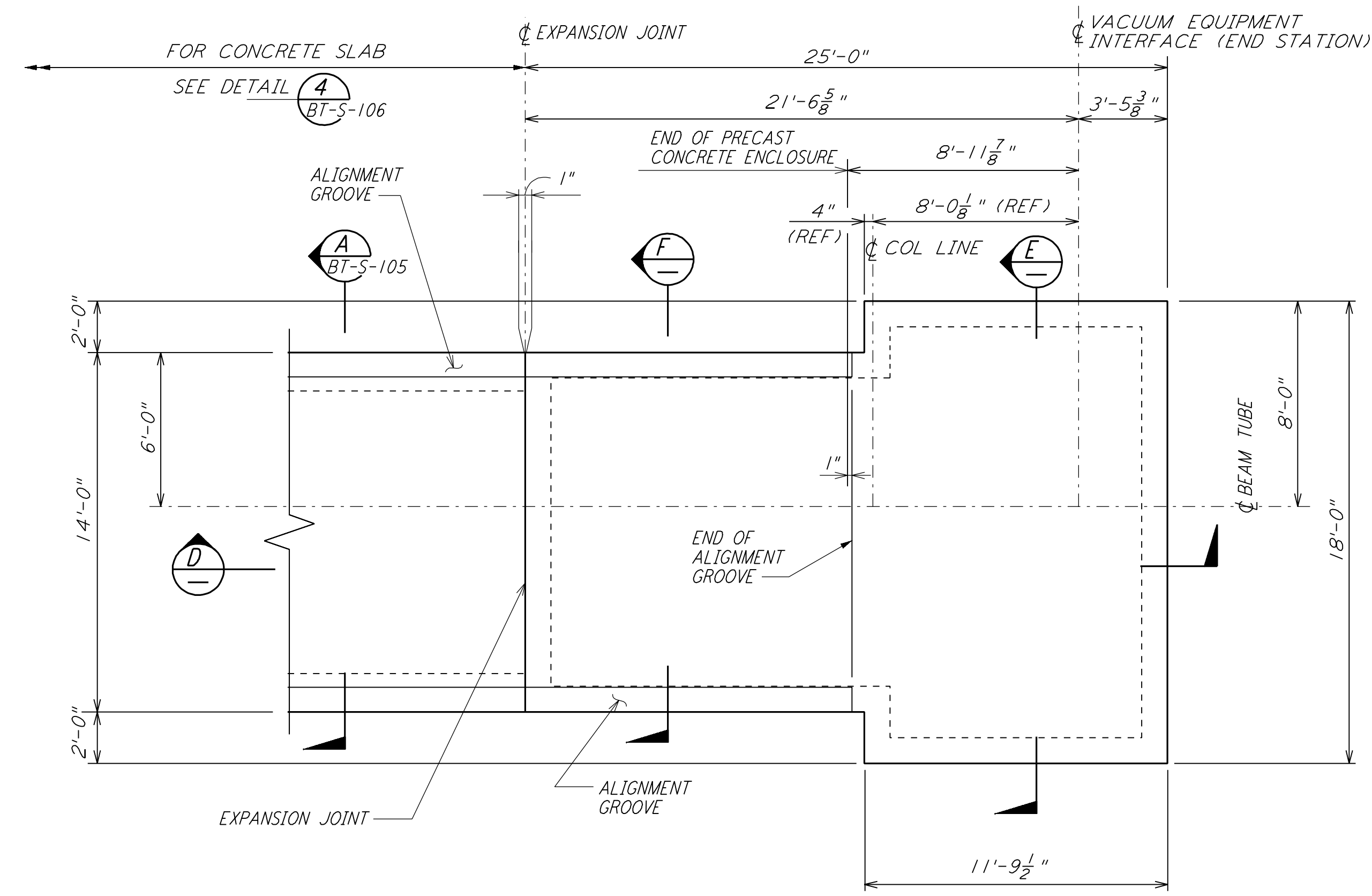
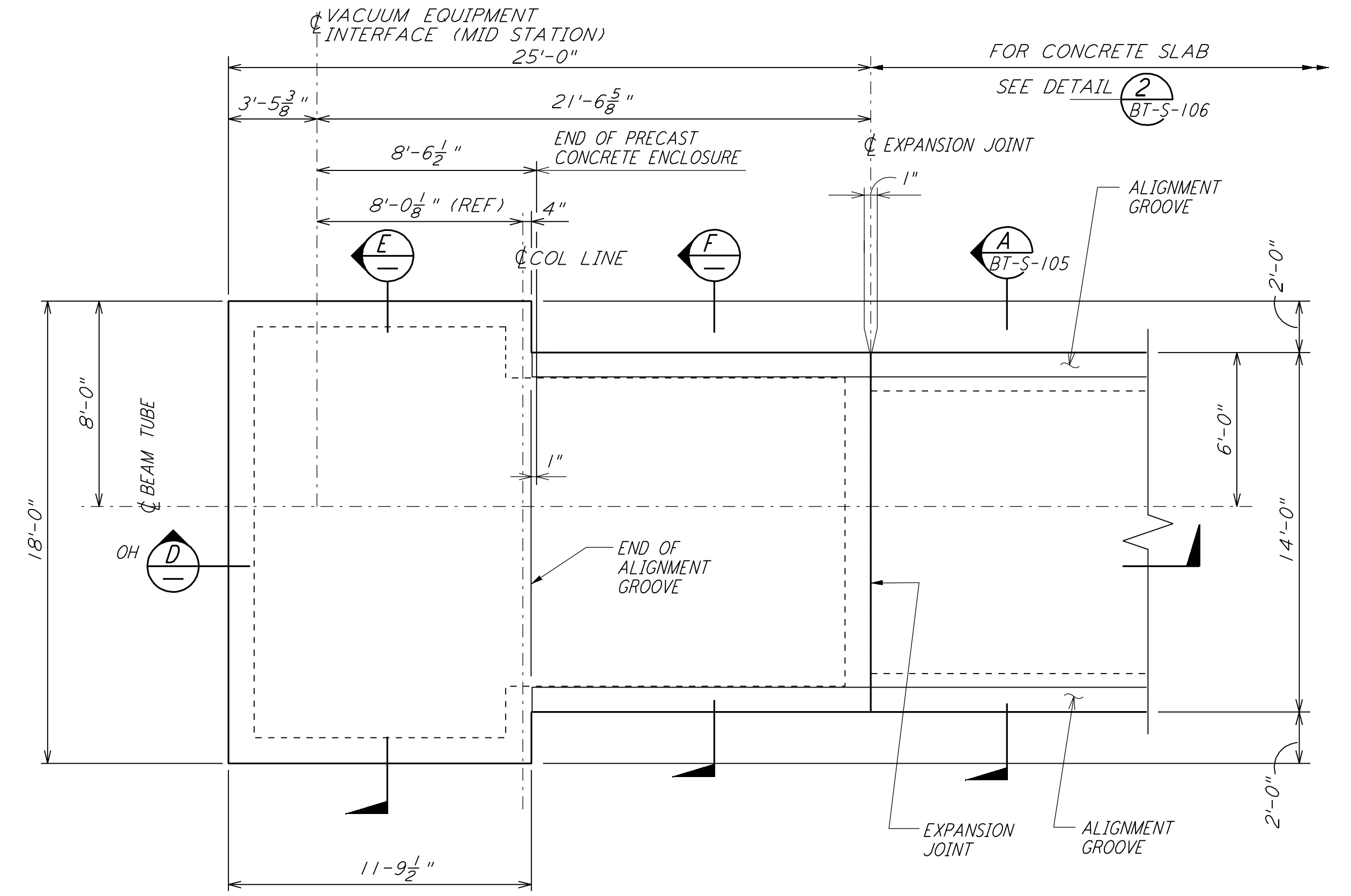


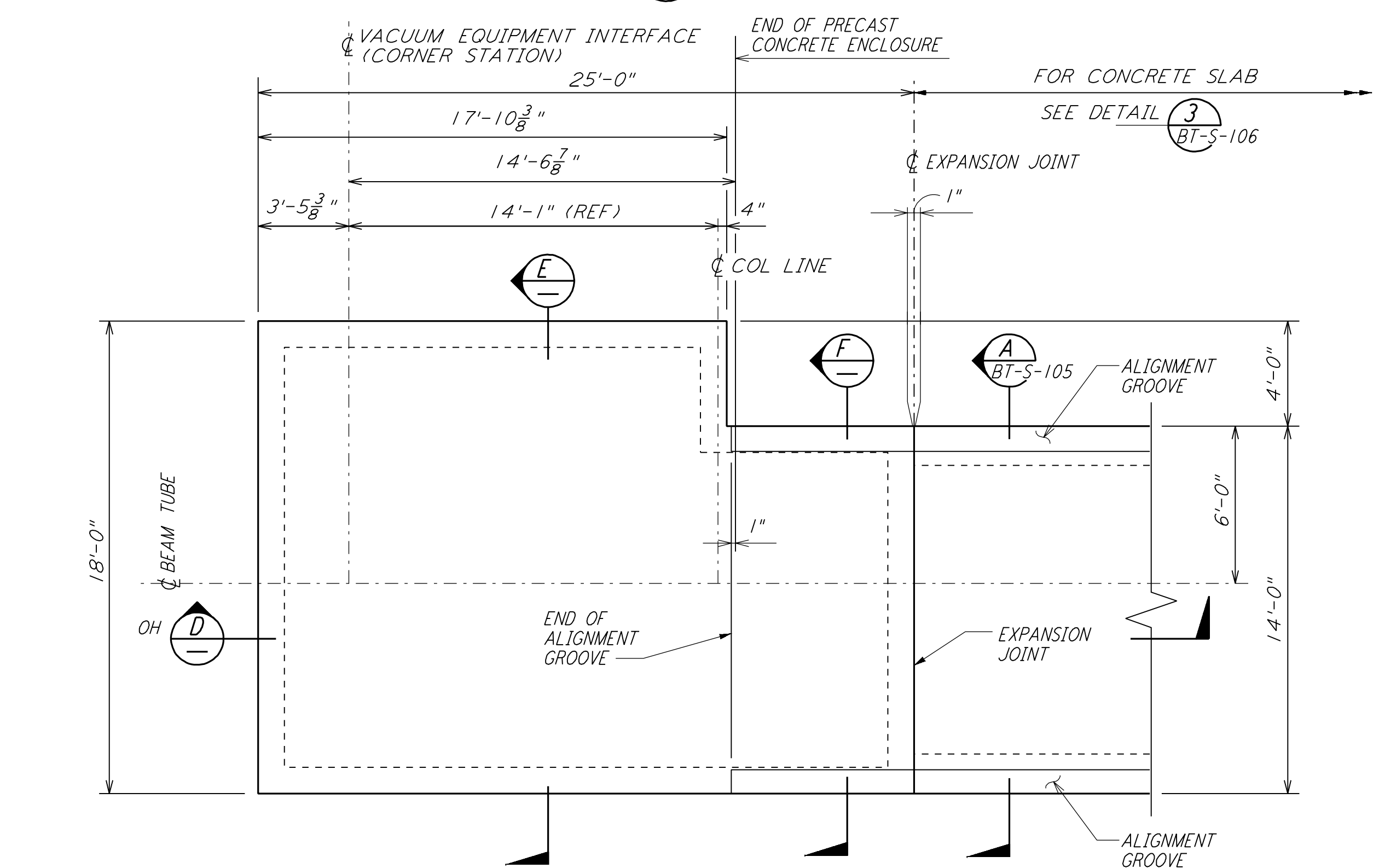
DETAIL 1 REF
 1/2" = 1'-0" BT-S-105 BT-S-104



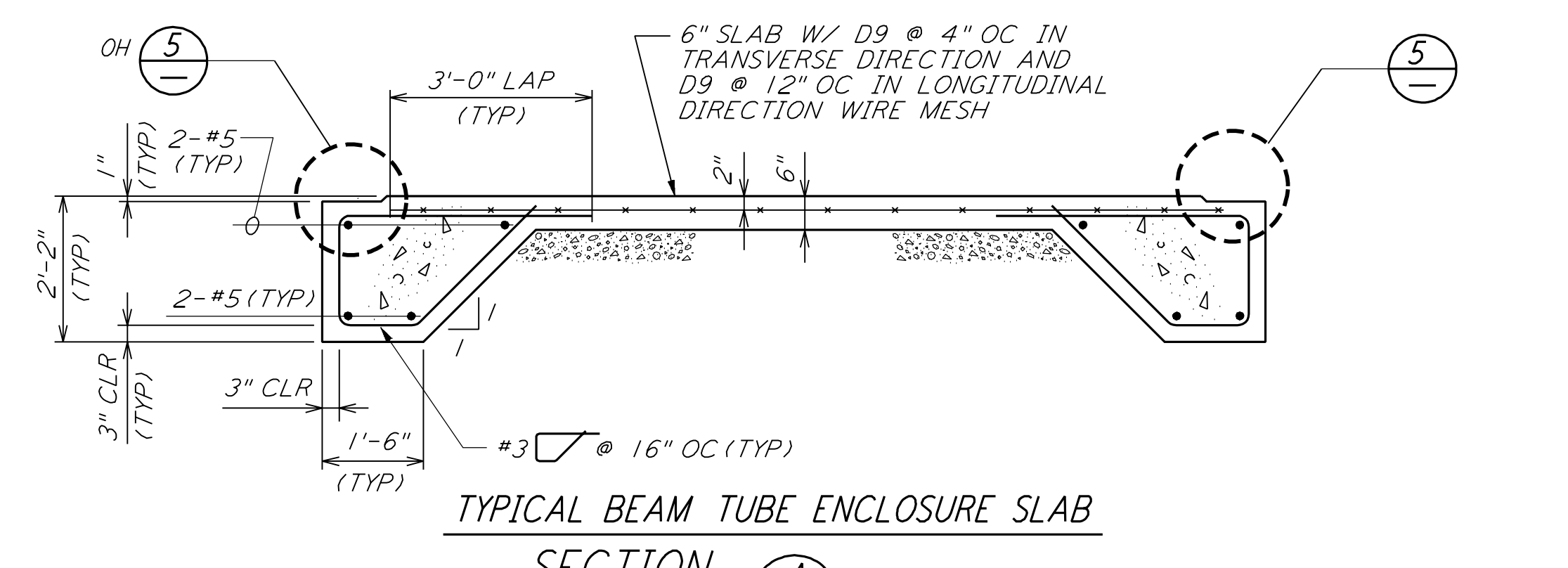
DETAIL 2 REF
 1/2" = 1'-0" BT-S-105 BT-S-104



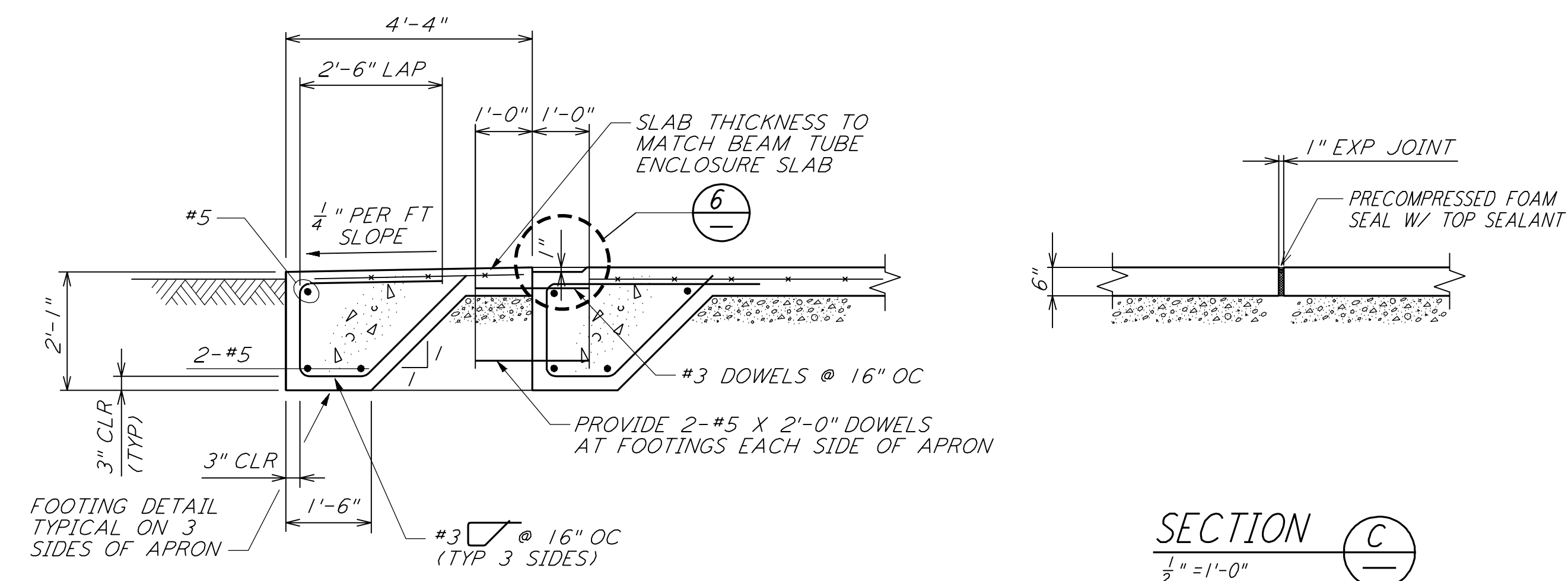
DETAIL 3 REF
 1/2" = 1'-0" BT-S-105 BT-S-104



DETAIL 4 REF
 1/2" = 1'-0" BT-S-105 BT-S-104



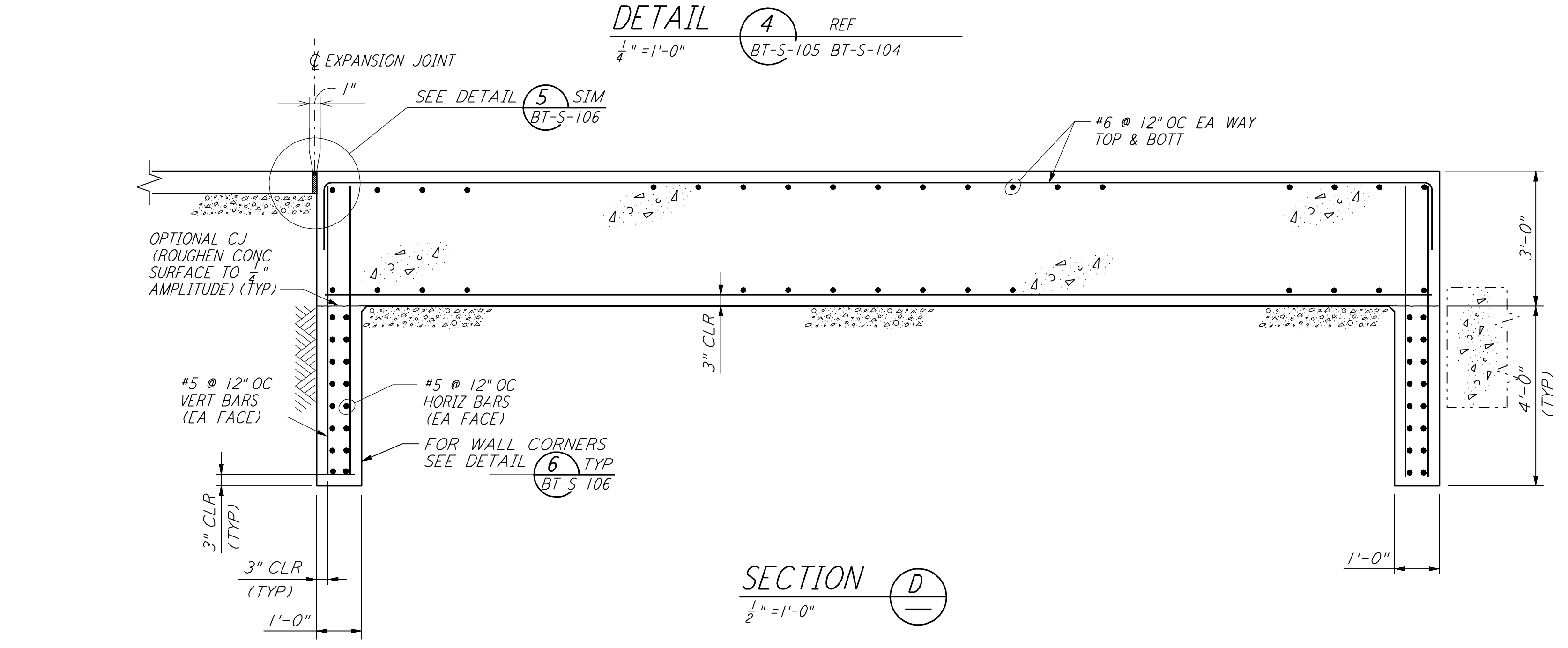
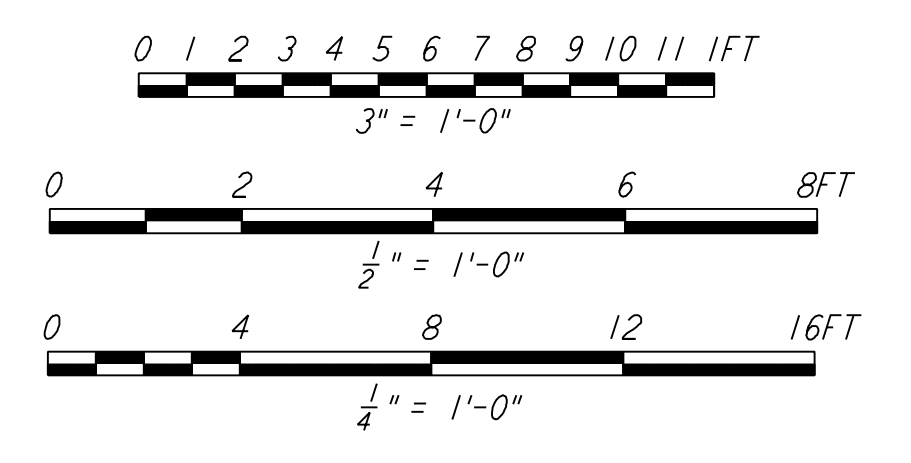
DETAIL 5 REF
 3" = 1'-0" BT-S-105 BT-S-106



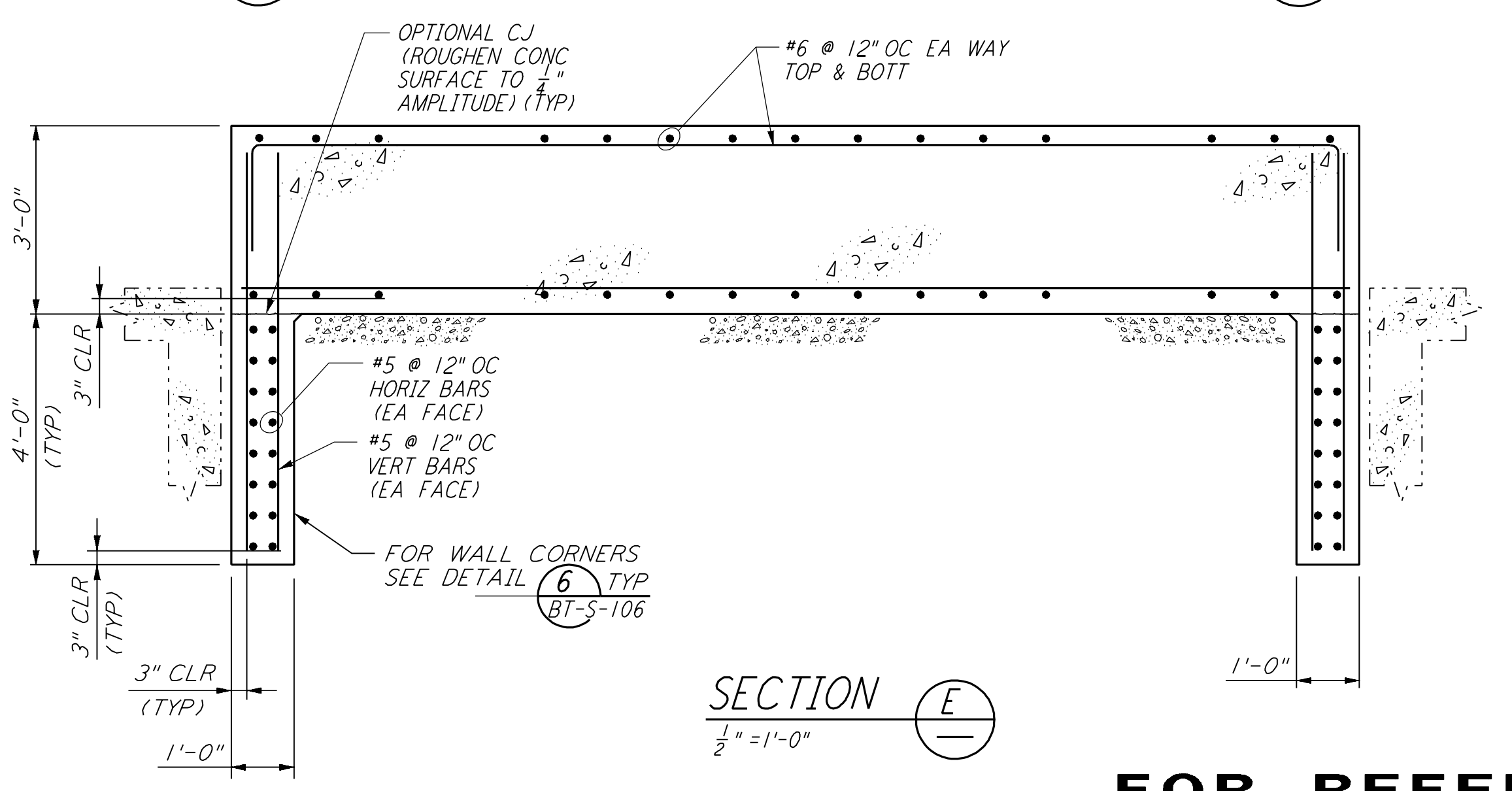
DETAIL 6 REF
 3" = 1'-0"

SECTION C REF
 1/2" = 1'-0"

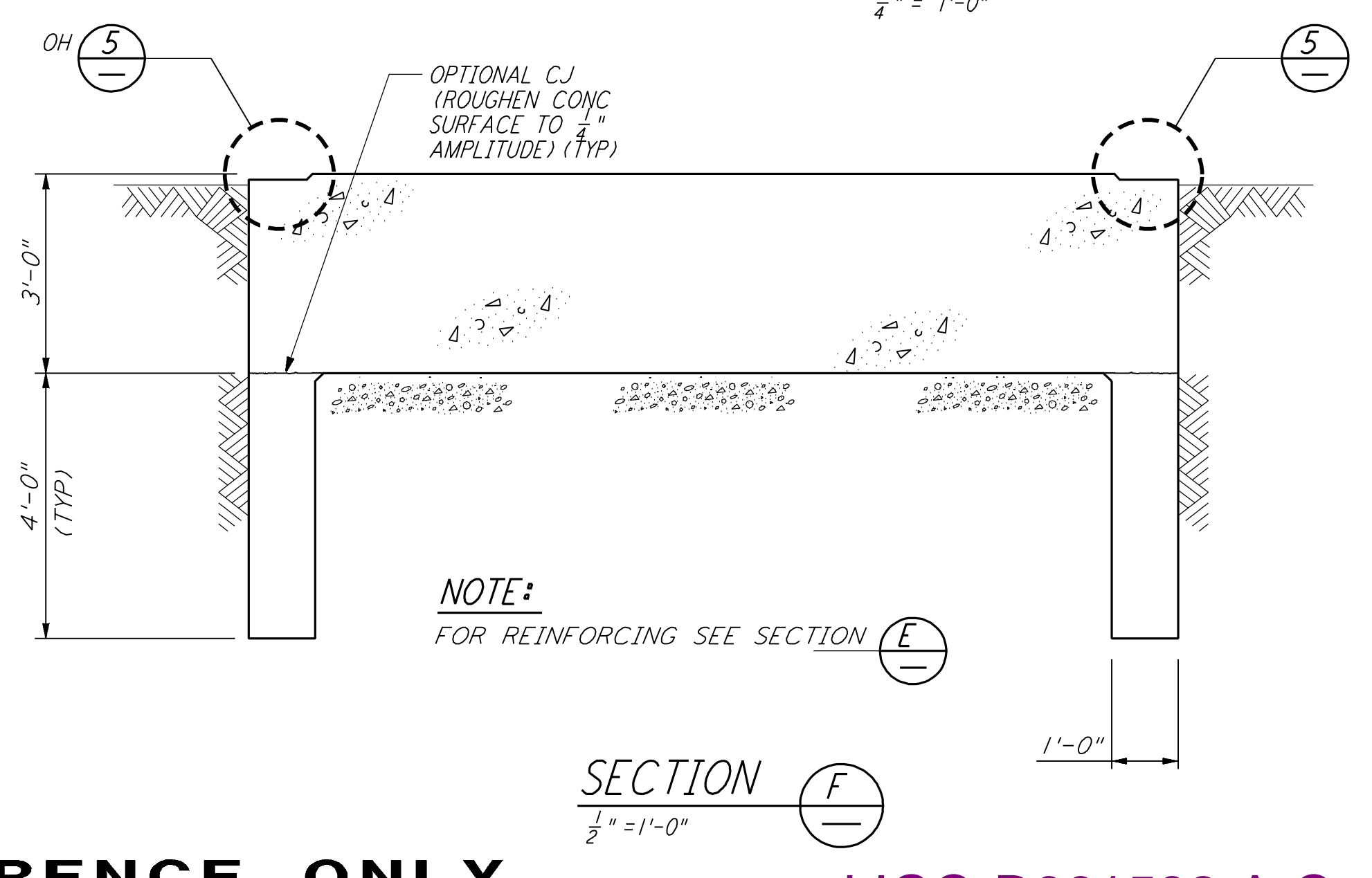
NOTE:
 1. FOR GENERAL NOTES, ABBREVIATIONS AND LEGEND SEE DRAWING BT-S-101.



SECTION D REF
 1/2" = 1'-0"



SECTION E REF
 1/2" = 1'-0"



SECTION F REF
 1/2" = 1'-0"

FOR REFERENCE ONLY

LIGO-D961582-A-O

NO.	DATE	BY	CHKD	ENGR	PROJ	DESCRIPTION
A	5-10-96	MCS				ISSUED FOR BID

DRAWN	SH
CHECKED	
ENGINEER	
PROJ	

PARSONS
 100 WEST WALNUT STREET
 PASADENA, CALIFORNIA

LIGO
 CALIFORNIA INSTITUTE OF TECHNOLOGY
 MASSACHUSETTS INSTITUTE OF TECHNOLOGY

LASER INTERFEROMETER
 GRAVITATIONAL-WAVE OBSERVATORY
 BTE INSTALLATION - HANFORD, WA

TITLE: STRUCTURAL BEAM TUBE ENCLOSURE SECTIONS & DETAILS SHEET 1

SCALE: AS NOTED
 SHEET NUMBER: PP150969
 PROJECT NUMBER: 8094

BT-S-105

This document and the design it covers are the property of PARSONS. They are loaned only with the borrower's expressed written agreement that they will not be reproduced, copied, loaned, exhibited, or used in any other way, except by written consent from PARSONS to the borrower.