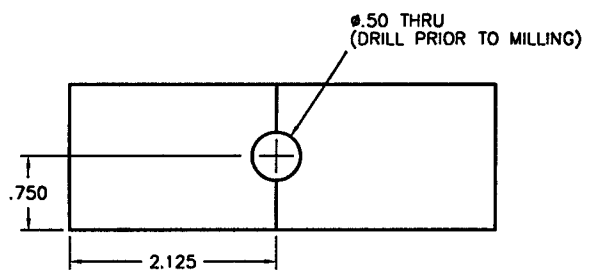
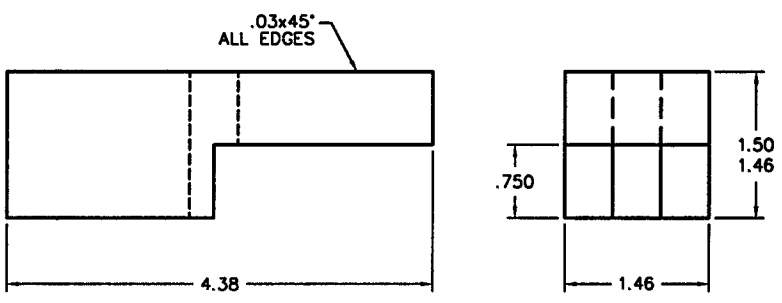


REVISIONS			
REV.	DESCRIPTION	APPROVED	DATE
A	RELEASED	ZH	
B	REMOVED VENTS	AH	3/27/96
C	REDRAWN	AJL	10-25-96



- NOTES:
- 1: ALL SURFACES TO MACHINE OR MECHANICALLY POLISH.
  - 2: DEBURR AND HAND POLISH ALL SURFACES NO SNAGGING SHALL OCCUR WHILE WIPING WITH A CLEAN COTTON CLOTH.
  - 3: PROTECT ALL SURFACES FROM SCRATCHES, GOUGES AND TOOLING MARKS DURING HANDLING

PSI DWG # V049-8-173

DEC 19 1996

		1 1/2" SQUARE BAR	
ITEM	QTY.	PART NO.	DESCRIPTION
		PART LIST	
		MATERIAL SPECIFICATION: 304 SST	
<small>UNLESS OTHERWISE SPECIFIED DIMENSIONS ARE IN INCHES TOLERANCES ARE:                  DECIMALS ANGLES FINISH                  .XX ± .01 ± 10' 32/                  .XXX ± .005</small>		<small>CONTRACT OR SALES ORDER NO.</small>  <small>APPR. WT.</small>  <small>APPROVALS</small>	
<small>UNSPECIFIED FILLETS: R.015                  BREAK EDGES .010 ± 45°                  REMOVE ALL BURRS</small>		<small>DATE</small> 3-27-96	
<small>THIRD ANGLE PROJECTION</small> 		<small>DRAFTER</small> AH <small>CHECKER</small> <small>ENGINEER</small>	
<small>DO NOT SCALE DRAWING</small>		<small>TITLE</small> LINK PIN HOUSING G44	
D103228-02 USED ON		A DWG. NO. 103230 SCALE: NONE SHEET 1 OF 1	
CADD FILE NAME		A103230C	

REV. C  
A  
DWG. NO. 103230