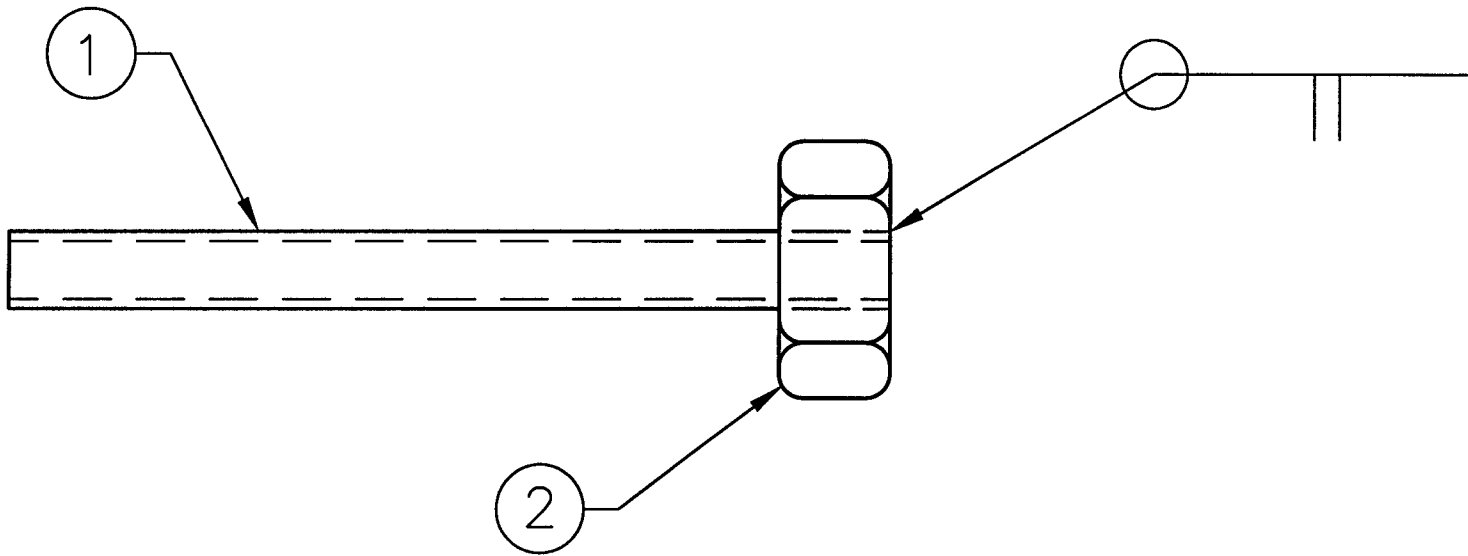


| REVISIONS |             |          |         |
|-----------|-------------|----------|---------|
| REV.      | DESCRIPTION | APPROVED | DATE    |
| A         | RELEASED    | AJL      | 10/5/96 |



DEC 19 1996

PSI DWG # V049-8-510

| ITEM | QTY. | PART NO. | DESCRIPTION                               |
|------|------|----------|---|
| 2    | 1    |          | SST HEX NUT, 5/16-24 UNF                  |
| 1    | 1    |          | SST THREADED ROD, 5/16-24 UNF, 2 3/4 LONG |

|   |                             |  |  |
|---|-----------------------------|--|--|
| <b>PART LIST</b>  |                             | MATERIAL SPECIFICATION:  |  |
| UNLESS OTHERWISE SPECIFIED<br>DIMENSIONS ARE IN INCHES<br>TOLERANCES ARE:<br>DECIMALS ANGLES FINISH<br>.XX ± .01 ± 10' 32/<br>.XXX ± .005<br><br>UNSPECIFIED FILLETS: R.015<br>BREAK EDGES .010 ± 45°<br>REMOVE ALL BURRS<br><br>THIRD ANGLE PROJECTION<br> | CONTRACT OR SALES ORDER NO. |  | <b>GNB</b> Corporation<br>SCIENTIFIC AND INDUSTRIAL EQUIPMENT<br><br>30971 San Benito Ct.<br>HAYWARD, CALIFORNIA 94544<br>(510) 441-1900 FAX: (510) 441-0939 |
|   | APPROX. WT.                 |  |  |
|   | APPROVALS                   |  |  |
|   | DATE                        |  |  |
| DRAFTER   | CHECKER                     | TITLE<br><b>WELD'T, CAP SCREW, MTG., LOCK<br/>                 LIMIT SWITCH, LIGO G44, G48</b> |  |
| ENGINEER  | AJL      10/5/96            |  |  |
| DO NOT SCALE DRAWING  |                             | A      DWG. NO. <b>A103754</b>   | REV. <b>A</b>  |
| CADD FILE NAME <b>A103754A</b>  |                             | SCALE:      NONE   | SHEET      1      OF      1  |

TOP ASS'Y  
USED ON

LIGO-D961626-A-V