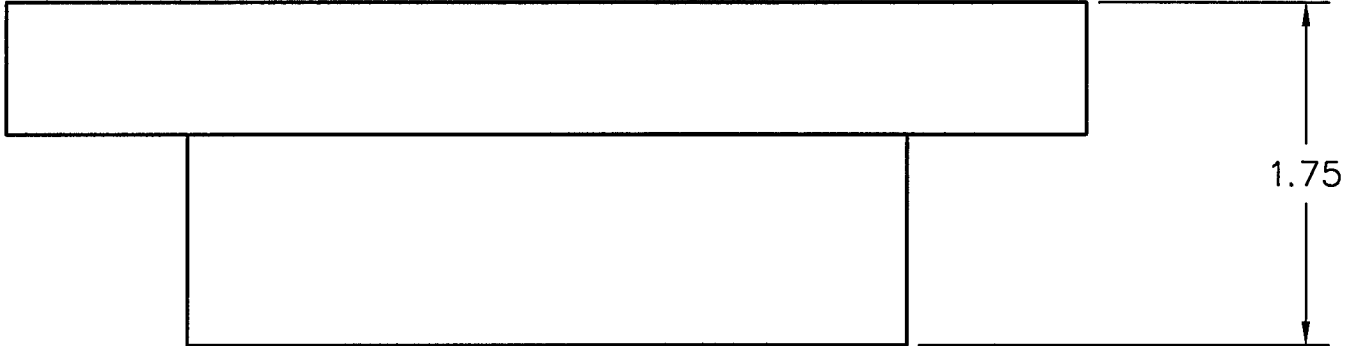


REVISIONS			
REV.	DESCRIPTION	APPROVED	DATE
A	RELEASED	AJL	10/14/96

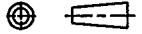



DEC 19 1996

PSI DWG # V049-8-520

REV. A
DWG. NO. 103800
A

ITEM	QTY.	PART NO.	DESCRIPTION
1	1	800-600-LF-T	(A&N) 8"CF HALF NIPPLE, TAPPED, NONROTATABLE

PART LIST		MATERIAL SPECIFICATION:		
UNLESS OTHERWISE SPECIFIED DIMENSIONS ARE IN INCHES TOLERANCES ARE: DECIMALS ANGLES FINISH .XX ± .01 ± 1° 32/ .XXX ± .005 UNSPECIFIED FILLETS: R.015 BREAK EDGES .010 ± 45° REMOVE ALL BURRS THIRD ANGLE PROJECTION  DO NOT SCALE DRAWING	CONTRACT OR SALES ORDER NO.		 GNB Corporation SCIENTIFIC AND INDUSTRIAL EQUIPMENT 30971 San Benito Ct. HAYWARD, CALIFORNIA 94544 (510) 441-1900 FAX: (510) 441-0939	
	APPROX. WT.			
	APPROVALS			DATE
	DRAFTER	AJL		10/14/96
CHECKER			TITLE MODIFIED HALF NIPPLE, WELD'T, BONNET PLATE, LIGO G44E, G44P	
ENGINEER				
CADD FILE NAME		A103800A	A DWG. NO. A103800 SCALE: NONE SHEET 1 OF 1 REV. A	

D103212
USED ON

LIGO-D961636-A-V