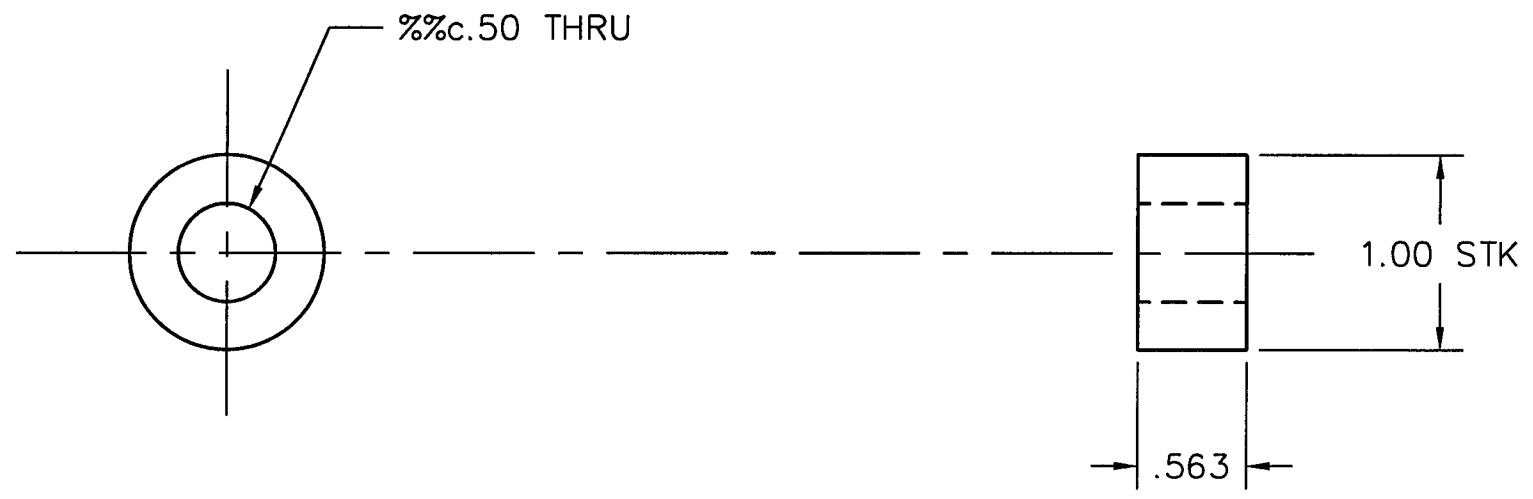


REVISIONS			
REV.	DESCRIPTION	APPROVED	DATE
A	RELEASED	AJL	11-9-96
B	Ø.50 THRU WAS Ø.38 THRU	AJL	11-18-96



PSI DWG # 1049-8-526 ^{DEC 19 1996}

		1" DIA BAR		
ITEM	QTY.	PART NO.	DESCRIPTION	
PART LIST		MATERIAL SPECIFICATION: 304 SST		
<small>UNLESS OTHERWISE SPECIFIED DIMENSIONS ARE IN INCHES TOLERANCES ARE: DECIMALS ANGLES FINISH .XX ± .01 ± 1° 32/ .XXX ± .005</small> <small>UNSPECIFIED FILLETS: R.015 BREAK EDGES .010 ± 45° REMOVE ALL BURRS</small> <small>THIRD ANGLE PROJECTION</small> <small>DO NOT SCALE DRAWING</small>	CONTRACT OR SALES ORDER NO.		 SCIENTIFIC AND INDUSTRIAL EQUIPMENT 30971 Son Benito Ct. HAYWARD, CALIFORNIA 94544 (510) 441-1900 FAX: (510) 441-0939	
	APPROX. WT.			TITLE STANDOFF G44E, G48E
	APPROVALS DATE			
	DRAFTER AJL	11-9-96		
CADD FILE NAME A103853B		SCALE: NONE	SHEET 1 OF 1 REV. B	

D103294
USED ON

REV. B
A
DWG. NO. 103853