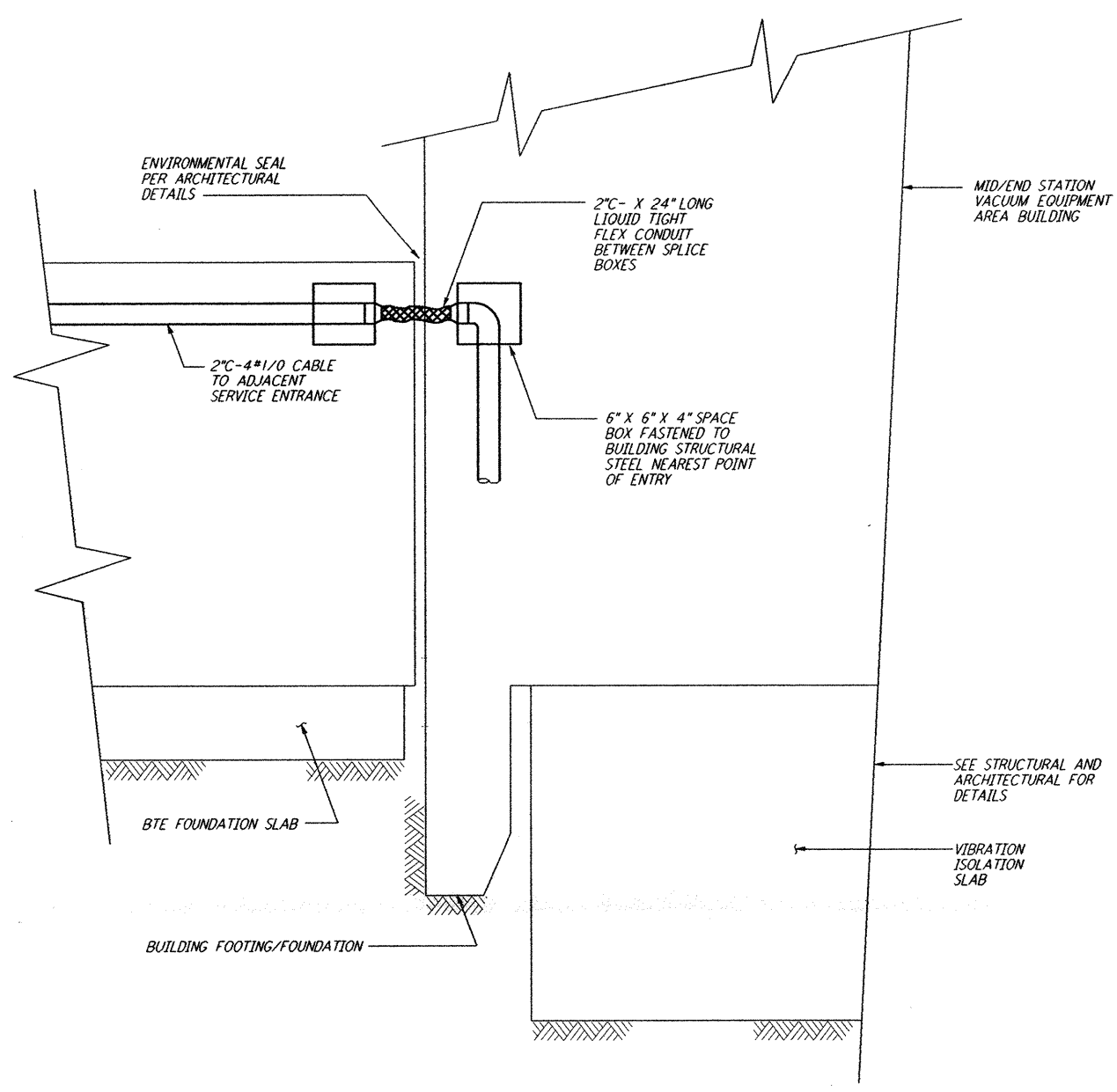
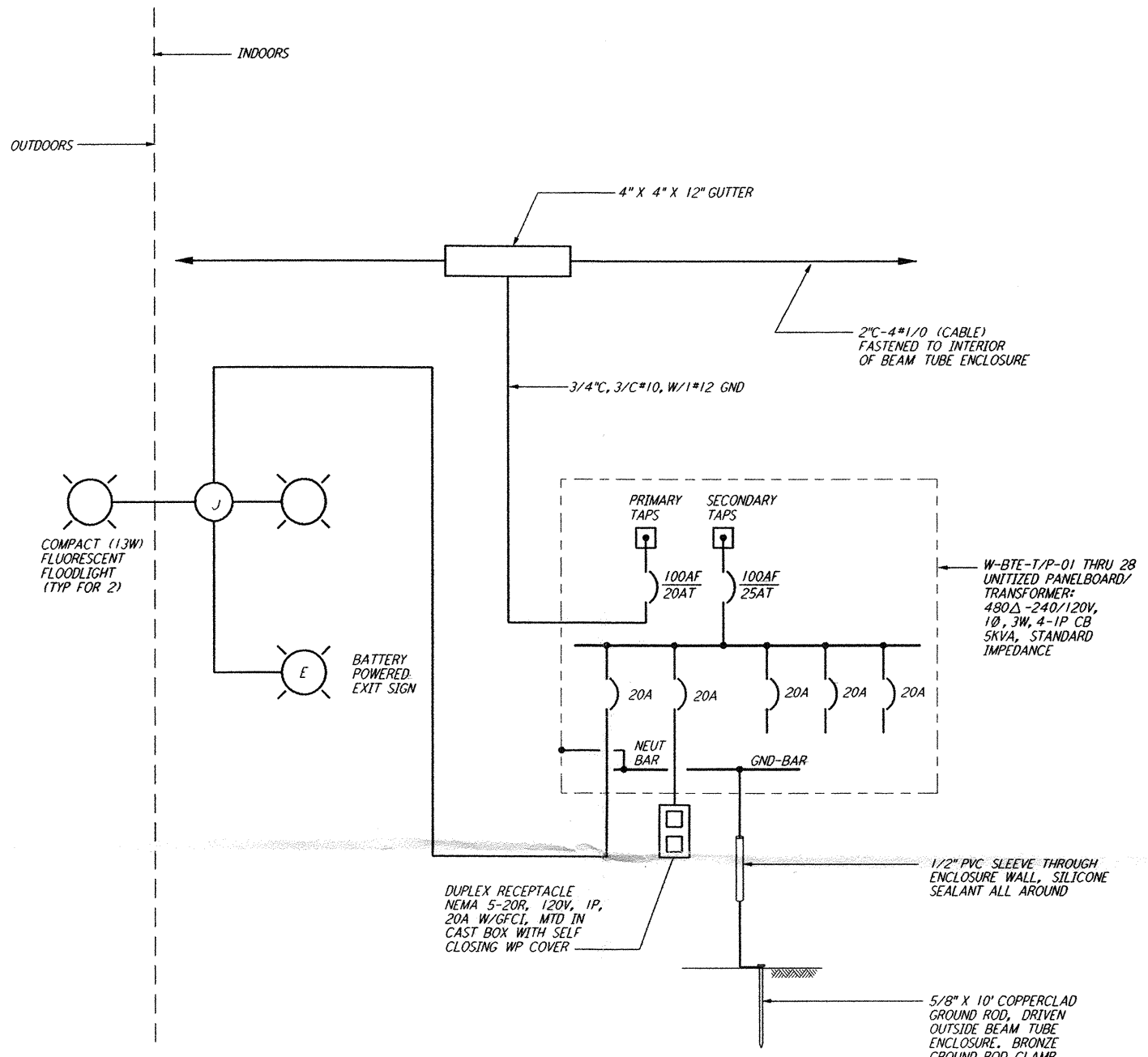


This document and the design it covers are the property of PARSONS. They are loaned only with the borrower's expressed written agreement that they will not be reproduced, copied, loaned, exhibited, or used in any other way, except by written consent from PARSONS to the borrower.



**ELECTRICAL POWER CABLE AND CONDUIT/
 BRIDGING ACROSS BTE / BLDG JOINT**

NTS
 (TYPICAL FOR 28 PLACES)



**BTE SERVICE ENTRANCE
 ELECTRICAL POWER PANEL AND LIGHTS**

NTS
 (TYPICAL FOR 28 PLACES)



NO.	DATE	APRD BY	DESCRIPTION OF REVISION
9			
8			
7			
6			
5			
4			
3			
2			
1			

DATE	10-31-95
DRAWN	J. G.
CHECKED	
ENGINEER	
PROJ MGR	

NO.	DATE	APRD BY	ISSUED FOR
A	10-31-95	TDM	PRELIMINARY DESIGN REVIEW

PARSONS

100 WEST WALNUT STREET
 PASADENA, CALIFORNIA

LIGO

CALIFORNIA INSTITUTE OF TECHNOLOGY
 MASSACHUSETTS INSTITUTE OF TECHNOLOGY

LIGO-D961709-A-□

LASER INTERFEROMETER
 GRAVITATIONAL-WAVE OBSERVATORY
 SITE NO. 2 - LIVINGSTON, LOUISIANA

TITLE	SCALE	CONTRACT NUMBER	PROJECT NUMBER				
ELECTRICAL BEAM TUBE ENCLOSURE DETAILS	NONE	PPI50969	8094				
SHEET NUMBER	REVISIONS						
LA-E-403	<table border="1"> <tr> <td>NO.</td> <td>REVISIONS</td> </tr> <tr> <td> </td> <td> </td> </tr> </table>			NO.	REVISIONS		
NO.	REVISIONS						

Mon Oct 30 23:58:48 1995 s3-v1862 J:\PLOTS\QUEUES\18B2\EE403.PRF