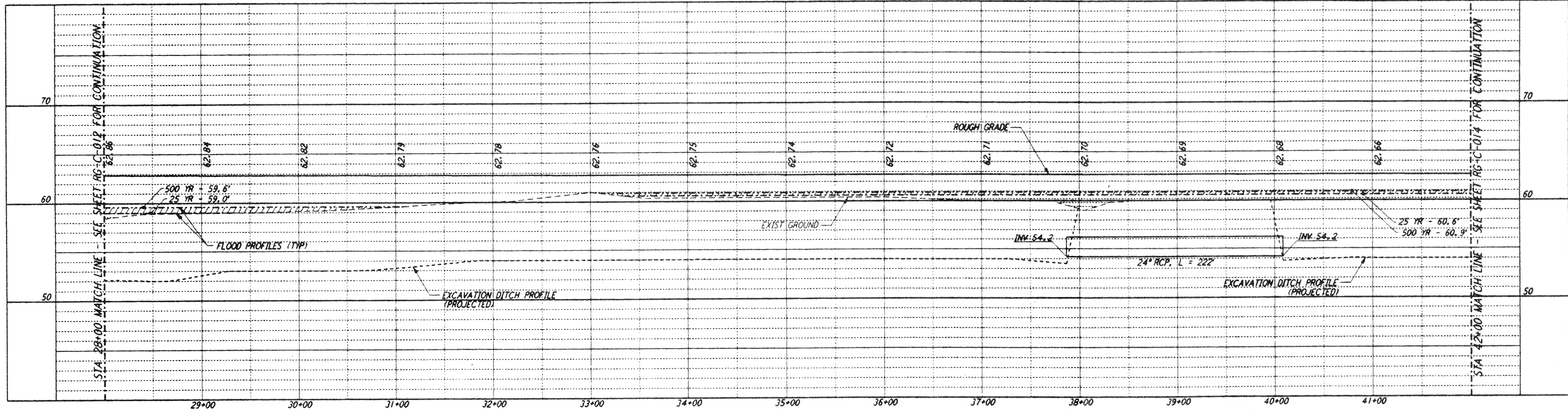
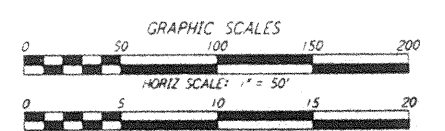
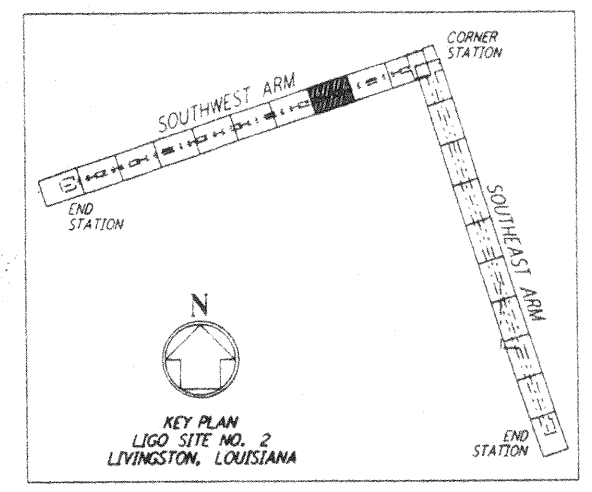
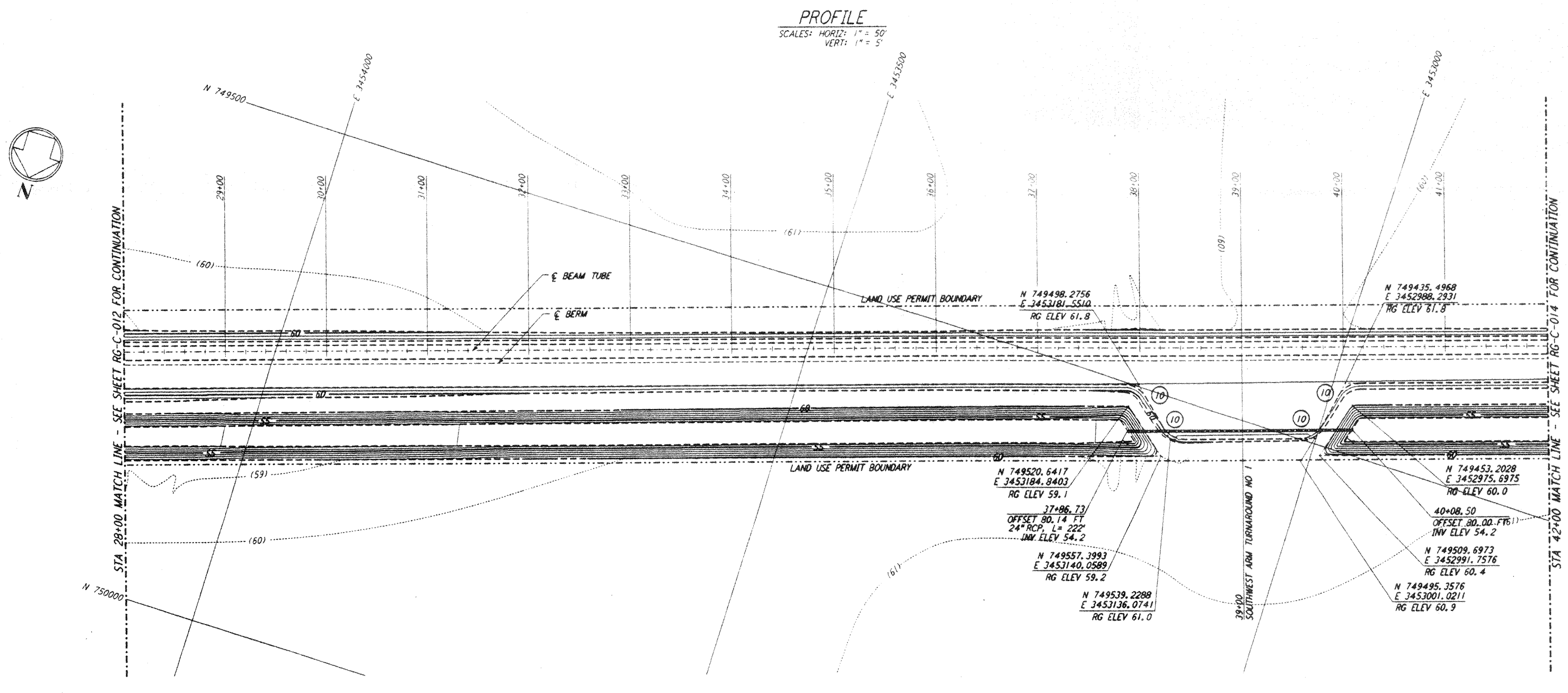


This document and the design it covers are the property of PARSONS. They are loaned only with the borrower's expressed written agreement that they will not be reproduced, copied, issued, exhibited, or used in any other way, except by written consent from PARSONS to the borrower.



NOTES:
 1. SEE SHEET RG-C-002 FOR GENERAL NOTES, LEGEND AND ABBREVIATIONS.

CURVE DATA				
Δ	RADIUS	LENGTH	TANGENT	
10	60°00'00"	25.00'	26.18'	14.43'

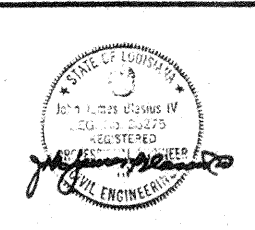


LIGO-0961719-01-0

**LASER INTERFEROMETER
 GRAVITATIONAL-WAVE OBSERVATORY
 ROUGH GRADING - LIVINGSTON, LA**
 TITLE: **ROUGH GRADING
 SOUTHWEST ARM
 PLAN AND PROFILE**
 STA 28+00 TO STA 42+00
 AS NOTED: **PP150969 8094**
RG-C-013

NO.	DATE	APPRO BY	DESCRIPTION OF REVISION
1	11/1/95	Tom	NO REVISIONS
2	11/1/95	Tom	ISSUED FOR CONSTRUCTION
3	8/28/95	Tom	ISSUED FOR BID

DATE	BY
8/11/95	WRB
8/9/95	WRB
8/8/95	MGP
8/28/95	WRB
8/28/95	WRB



PARSONS
 100 WEST WALNUT STREET
 PASADENA, CALIFORNIA

LIGO
 CALIFORNIA INSTITUTE OF TECHNOLOGY
 MASSACHUSETTS INSTITUTE OF TECHNOLOGY