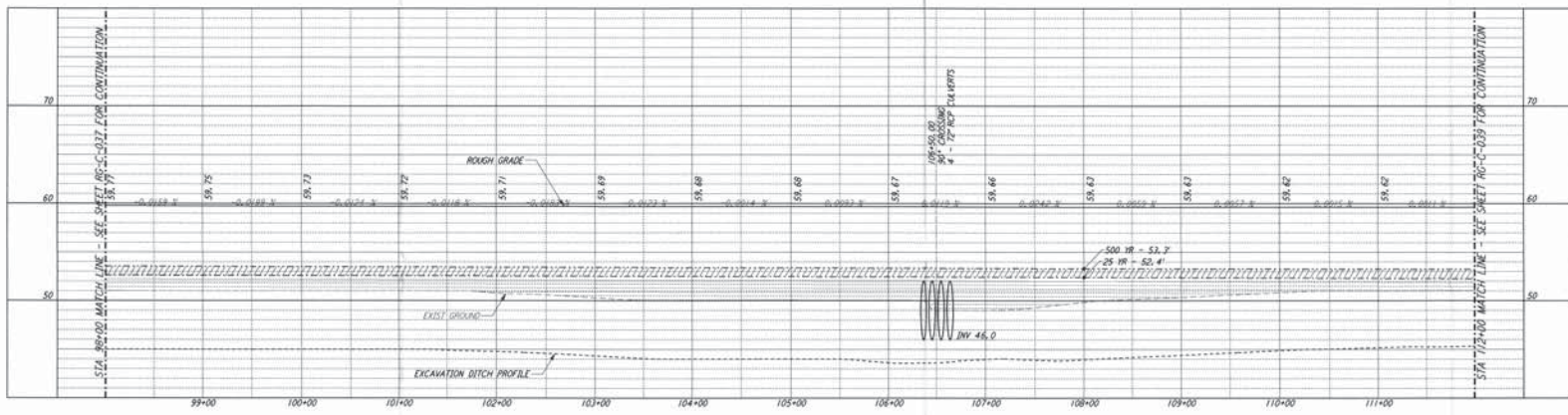


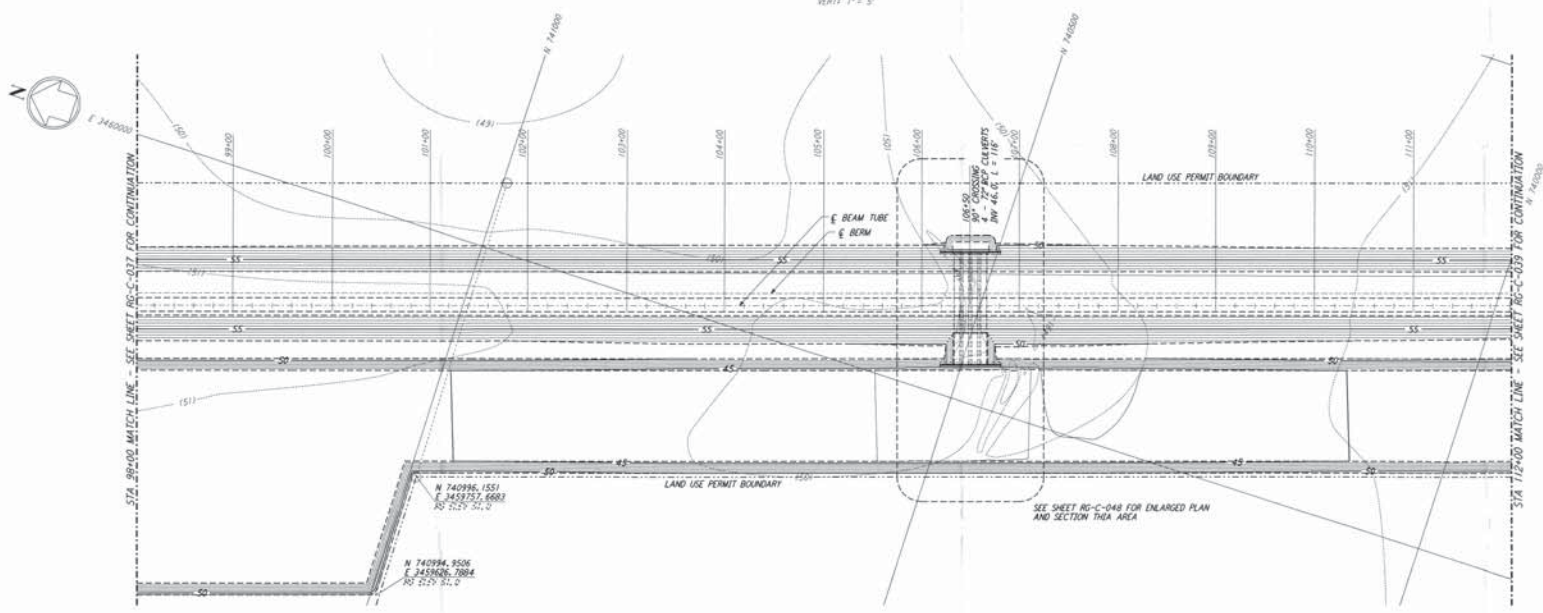
This document and the design it covers are the property of PARSONS. They are loaned only with the borrower's expressed written agreement that they will not be reproduced, copied, loaned, exhibited, or used in any other way, except by written consent from PARSONS to the borrower.

NOTES:
 1. SEE SHEET RG-C-002 FOR GENERAL NOTES, LEGEND AND ABBREVIATIONS.

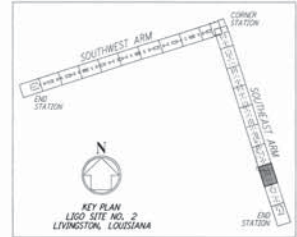


PROFILE
 SCALES: HORIZ. 1" = 50'
 VERT. 1" = 5'

CURVE DATA			
Δ	RADIUS	LENGTH	TANGENT



PLAN
 SCALE: 1" = 50'



LIGO-0761743-A-D

NO.	DATE	APPROVED BY	DESCRIPTION OF REVISION

NO.	DATE	APPROVED BY	ISSUED FOR

DATE	BY	CHKD BY
08/11/95		

PARSONS
 100 WEST WALNUT STREET
 PASADENA, CALIFORNIA

LIGO
 CALIFORNIA INSTITUTE OF TECHNOLOGY
 MASSACHUSETTS INSTITUTE OF TECHNOLOGY

**LASER INTERFEROMETER
 GRAVITATIONAL-WAVE OBSERVATORY
 ROUGH GRADING - LIVINGSTON, LA**

TITLE	AS NOTED	PROJECT NUMBER	REVISION NUMBER
ROUGH GRADING SOUTHEAST ARM PLAN AND PROFILE STA 98+00 TO STA 112+00	PP150969	8094	

RG-C-038