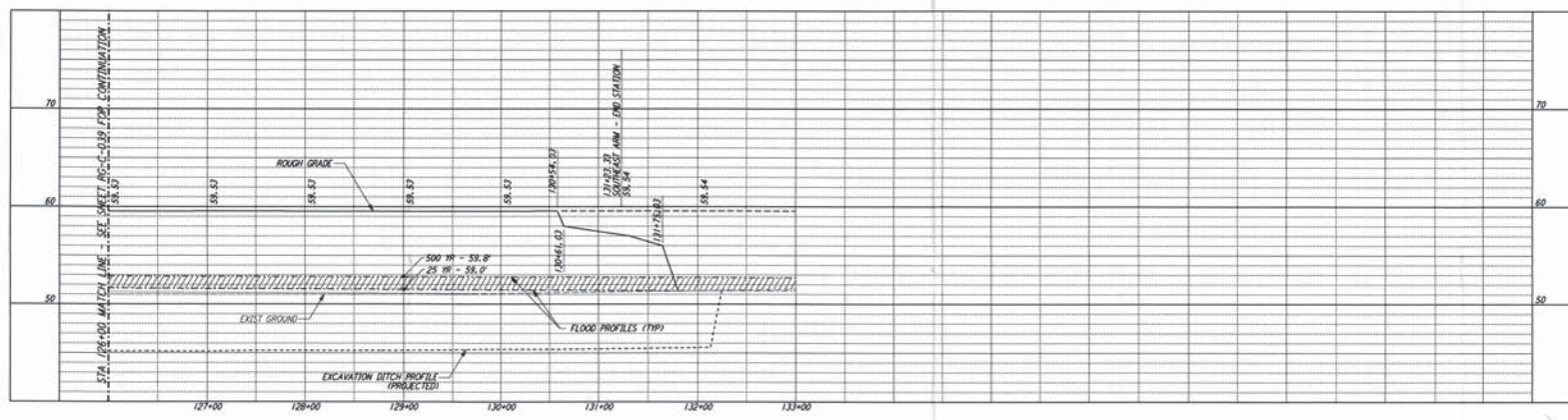
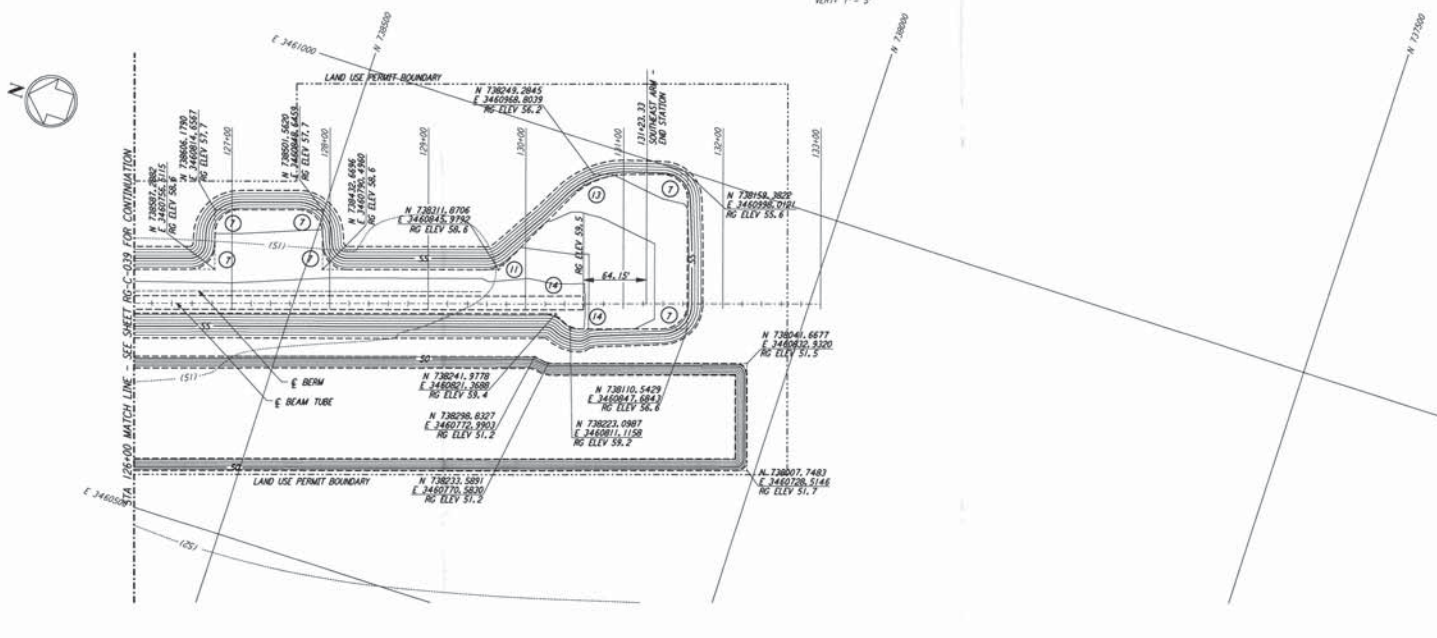


NOTES:
 1. SEE SHEET RG-C-002 FOR GENERAL NOTES, LEGEND AND ABBREVIATIONS.

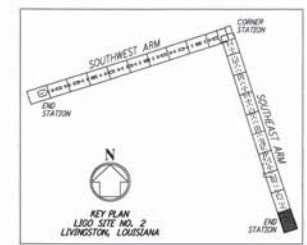


CURVE DATA			
Station	Δ	RADIUS	TANGENT
7	90°00'00"	25.00'	39.27'
11	45°00'00"	38.00'	30.62'
13	45°00'00"	88.00'	63.62'
14	46°23'52"	25.00'	20.24'

PROFILE
 SCALES: HORIZ. 1" = 50'
 VERT. 1" = 5'



PLAN
 SCALE: 1" = 50'



NO.	DATE	APPROVED BY	DESCRIPTION OF REVISION
9			
8			
7			
6			
5			
4			
3			
2			
1			

NO.	DATE	APPROVED BY	ISSUED FOR	ISSUED FOR
1	8/28/95	Tern	ISSUED FOR BID	
2				

DATE	BY
8/11/95	
8/9/95	
8/8/95	
8/28/95	
8/28/95	

PARSONS
 100 WEST WALNUT STREET
 PASADENA, CALIFORNIA

LIGO
 CALIFORNIA INSTITUTE OF TECHNOLOGY
 MASSACHUSETTS INSTITUTE OF TECHNOLOGY

**LASER INTERFEROMETER
 GRAVITATIONAL-WAVE OBSERVATORY
 ROUGH GRADING - LIVINGSTON, LA**

AS NOTED PPI50969 8094

**ROUGH GRADING
 SOUTHEAST ARM
 PLAN AND PROFILE
 STA 126+00 TO STA 133+00**

RG-C-040

This document and the design it covers are the property of PARSONS. They are loaned only with the borrower's expressed written agreement that they will not be reproduced, copied, loaned, exhibited, or used in any other way, except by written consent from PARSONS.

Tue Sep 12 06:55:11 1995 s3-3652 J:\PLOT\QUEUE\519382\CE\RG040.PRF

Tue Sep 12 06:55:11 1995 s3-3652 J:\PLOT\QUEUE\519382\CE\RG040.PRF