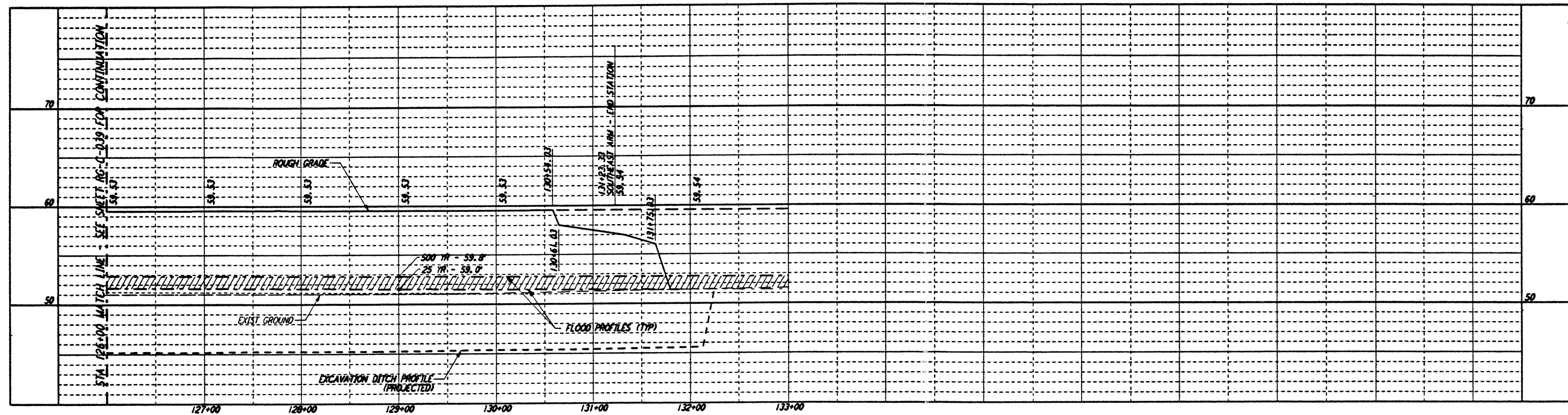
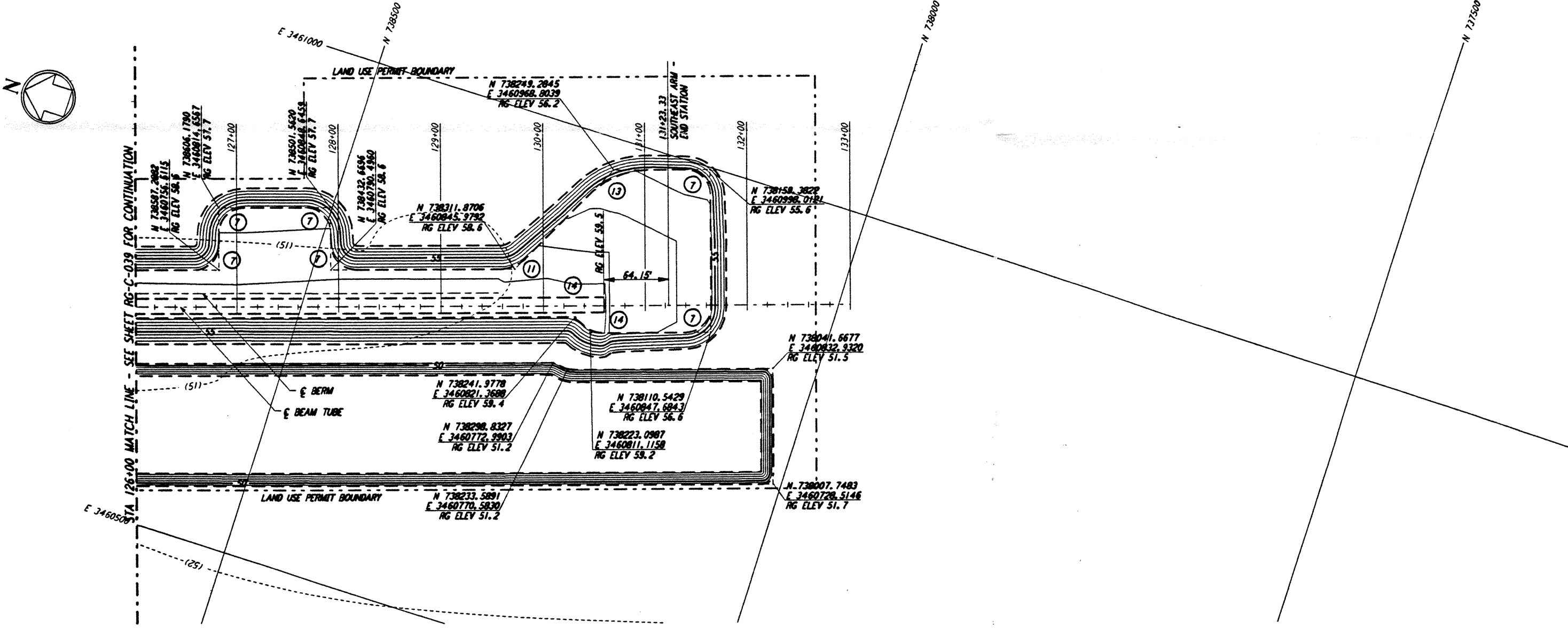


NOTES:
 1. SEE SHEET RG-C-002 FOR GENERAL NOTES, LEGEND AND ABBREVIATIONS.

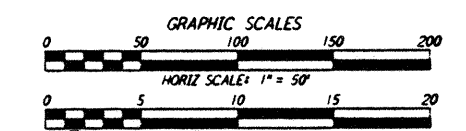
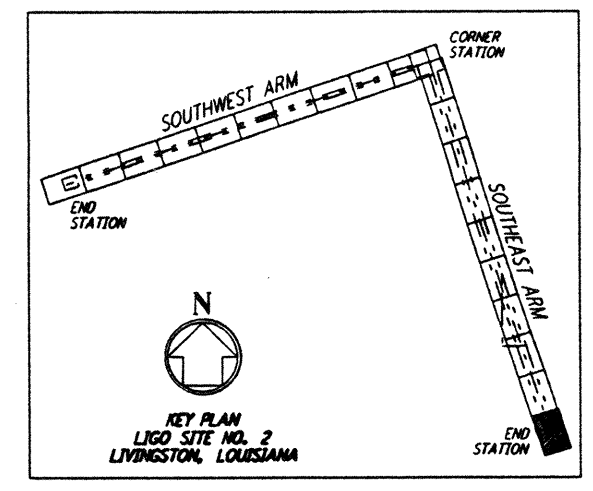


CURVE DATA			
Δ	RADIUS	LENGTH	TANGENT
7	90°00'00"	25.00'	39.27'
11	45°00'00"	39.00'	30.63'
13	45°00'00"	82.90'	63.62'
14	46°23'52"	25.00'	20.24'

PROFILE
 SCALES: HORIZ: 1" = 50'
 VERT: 1" = 5'



PLAN
 SCALE: 1" = 50'



LIGO-0961745-00-0

NO.	DATE	APPROVED BY	DESCRIPTION OF REVISION
9			
8			
7			
6			
5			
4			
3			
2			
1	8/28/95	T.D.M.	ISSUED FOR BID

NO.	DATE	APPROVED BY	ISSUED FOR
9			
8			
7			
6			
5			
4			
3			
2			
1	8/11/95	WRB	ISSUED FOR BID

PARSONS
 100 WEST WALNUT STREET
 PASADENA, CALIFORNIA

LIGO
 CALIFORNIA INSTITUTE OF TECHNOLOGY
 MASSACHUSETTS INSTITUTE OF TECHNOLOGY

LASER INTERFEROMETER
 GRAVITATIONAL-WAVE OBSERVATORY
 ROUGH GRADING - LIVINGSTON, LA

TITLE	AS NOTED	PROJECT NUMBER	8094
ROUGH GRADING SOUTHEAST ARM PLAN AND PROFILE STA 126+00 TO STA 133+00	PP150969	8094	

RG-C-040

not be reproduced, copied, loaned, exhibited, or used in any other way, except by written consent from PARSONS to the borrower.

This document and the design it covers are the property of PARSONS. They are loaned only with the borrower's expressed written agreement that they will

K:\PLOTS\QUEUES\18B2\CE040A.PRF s3-v18b2 1995 Aug 25 14:29:27