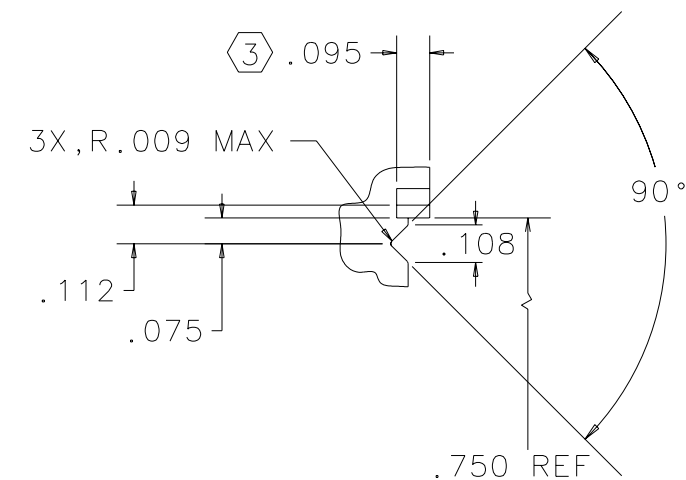
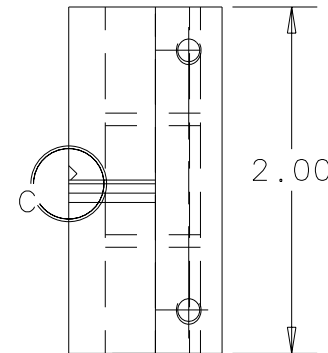
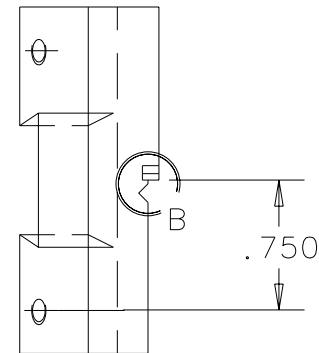


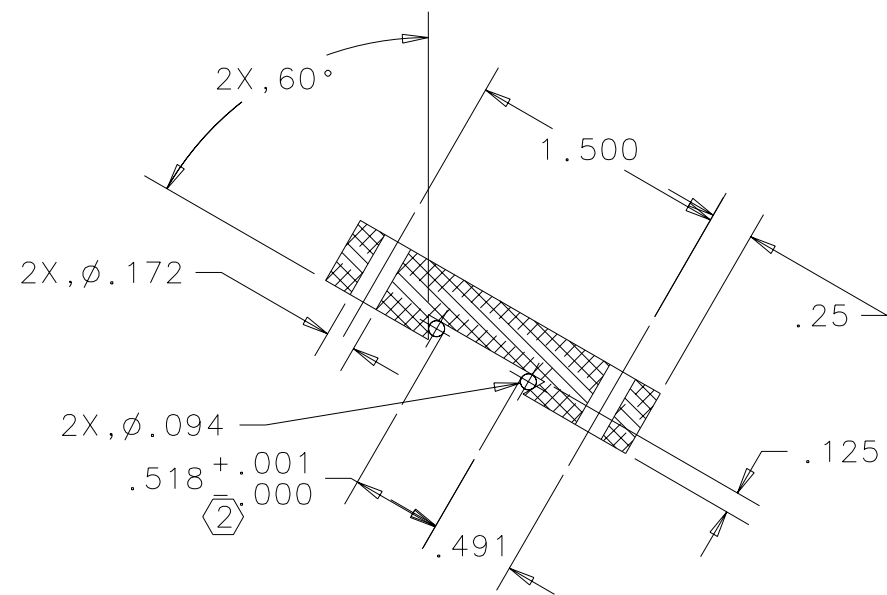
NOTES: (UNLESS OTHERWISE SPECIFIED)

- THIS FIXTURE IS FOR AN OPTIC THAT IS  $\phi 3.00$ " X 1.00" THICK (7.6cm x 2.5cm THICK) WITH A 0-30 MINUTE HORIZONTAL WEDGE.
- THIS PART TO BE A CLOSE SLIP FIT TO BASE PLATE, P/N D960017.
- AN UNDERCUT AND/OR PIN MAY BE USED TO ACHIEVE THIS DIMENSION.

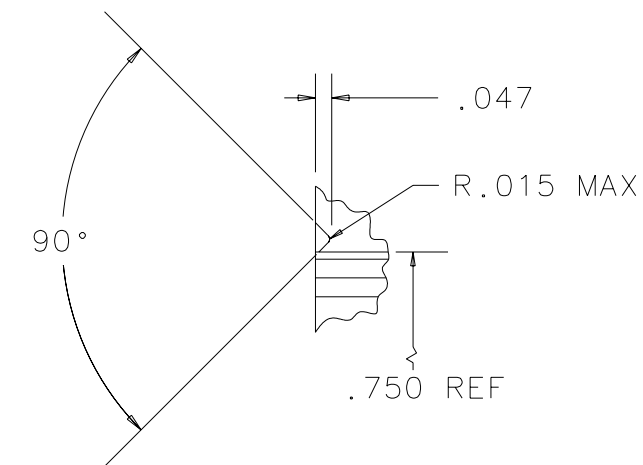
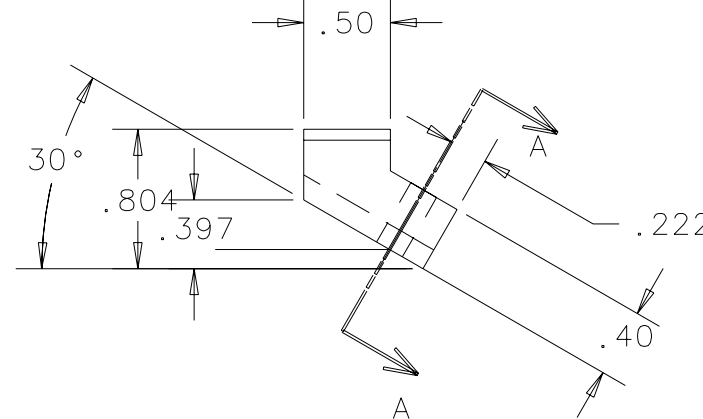
REV	DATE	DRAWN BY	CHECKED	DCC	DCN/DESCRIPTION
A	7-28-97	J. Hazel			E970121/INITIAL RELEASE



VIEW B  
SCALE 2:1



SECTION A-A



VIEW C  
SCALE 2:1

QTY REQD	PART OR IDENTIFYING NO	NOMENCLATURE OR DESCRIPTION	MATERIAL SPECIFICATION	ITEM NO
PARTS LIST				
UNLESS OTHERWISE SPECIFIED DIMENSIONS ARE IN IN [mm]		APPROVALS		DATE
TOLERANCES ARE:		DRAWN J. Hazel		1/96
FRACTIONS DECIMALS		CHECKED		
.XX = ±.03				
.XXX = ±.005				
ANGLES = ±P				
DO NOT SCALE DRAWING				
MATERIAL TEFLON				
FINISH N/A				
SCALE 1/1		FILENAME /home/dcc/docs/D970066.pdf		
		TITLE		
		RIGHT BLOCK, TOP		
		SIZE B		
		DWG NO. D970066-A-D		
		SHEET 1 OF 1		