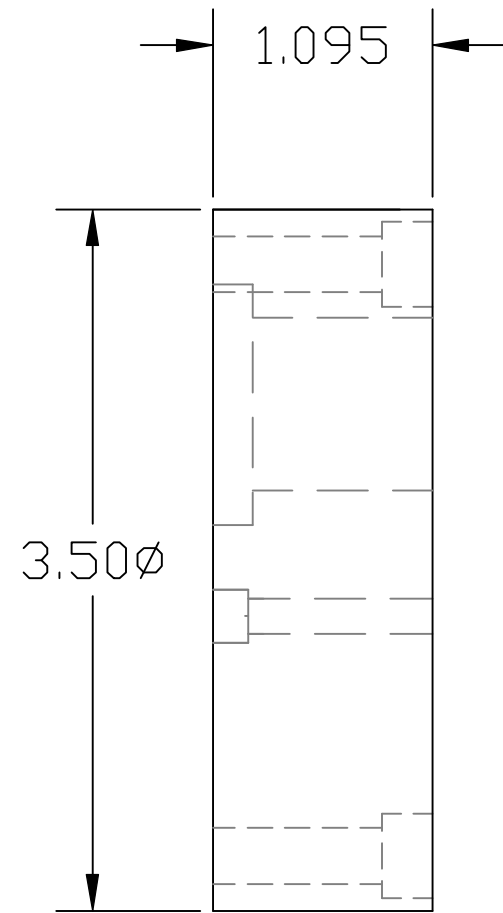
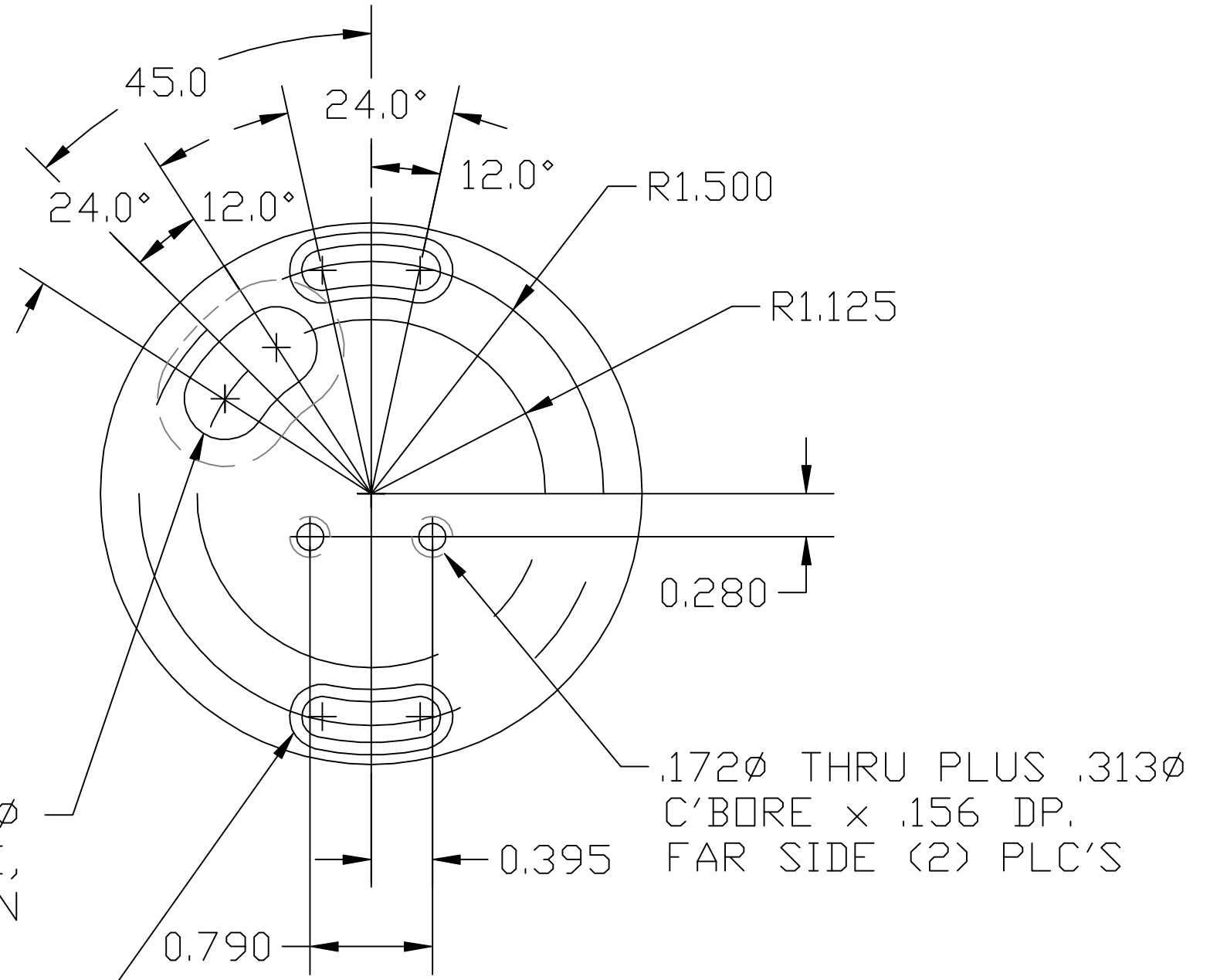


NOTES:
 1. CLEAR ANODIZE PER MIL-A-8625



0.529 ϕ THRU PLUS .88 ϕ
 C'BORE X .200 FAR SIDE,
 SLOTTED AS SHOWN

0.281 ϕ THRU PLUS .422 ϕ
 C'BORE X .281 DP,
 SLOTTED AS SHOWN (2) PLC'S



		UNLESS OTHERWISE SPECIFIED DIMENSIONS ARE IN INCHES														MIT CALIFORNIA INSTITUTE OF TECHNOLOGY MASSACHUSETTS INSTITUTE OF TECHNOLOGY							
		TOLERANCES: FRACTIONAL $\pm 1/16(.16)$ ANGULAR $\pm 1^\circ$ TWO PLACE DECIMAL $\pm .01(.025)$ THREE PLACE DECIMAL $\pm .005(.013)$		FINISHED SURFACE RMS 63 BREAK CORNERS IN: .02 REMOVE ALL BURRS														FOLDING MIRROR BASE 10X BEAM EXPANDER LIGHT SOURCE ASSY OPTICAL LEVER					
		MATERIAL: 6061-T6 ALUM.	HEAT TREAT: -	FINISH: SEE NOTE 1	B	CH'D MIRROR MOUNT													M.Smith	6/98			
					A	INITIAL RELEASE													MASON	5/98			
					00	PRE-RELEASE													K.MASON	5/1/97			
DWG. NO.		DESCRIPTION		USED ON: D970102/D970156/D970161	NEXT ASS'Y: -	REV	DESCRIPTION	DCC	SYS	DET	CDS	VE	CC	BT	CHECK	DRWN	DATE	CAD FILE	D970108-B.dwg	SIZE	B	DWG. NO.	D970108-B-D
REFERENCE DRAWINGS																		SCALE	FULL	SHEET	1	OF	1