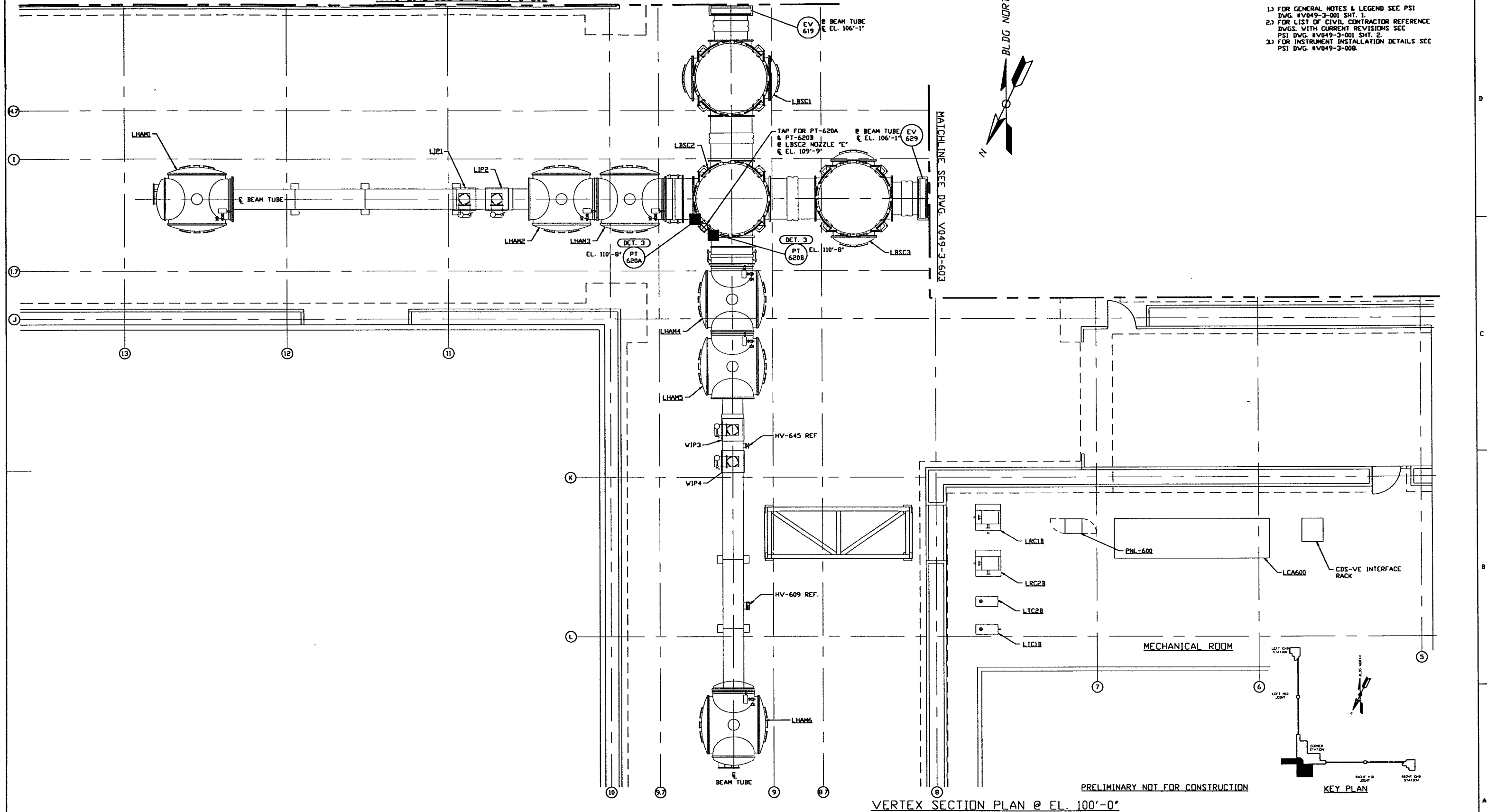


MATCHLINE SEE DWG. V049-3-602

NOTES:

- 1) FOR GENERAL NOTES & LEGEND SEE PSI DWG. #V049-3-001 SHT. 1.
- 2) FOR LIST OF CIVIL CONTRACTOR REFERENCE DWGS. WITH CURRENT REVISIONS SEE PSI DWG. #V049-3-001 SHT. 2.
- 3) FOR INSTRUMENT INSTALLATION DETAILS SEE PSI DWG. #V049-3-008.



VERTEX SECTION PLAN @ EL. 100'-0"

PRELIMINARY NOT FOR CONSTRUCTION

<p>PROPRIETARY AND CONFIDENTIAL THIS DOCUMENT CONTAINS PROPRIETARY INFORMATION BELONGING TO PROCESS SYSTEMS INTERNATIONAL, INC. OR ITS AFFILIATED COMPANIES AND SHALL BE KEPT SECRET FOR THE PURPOSE OF THIS CONTRACT. IT SHALL NOT BE REPRODUCED OR OTHERWISE USED, NOR SHALL SUCH INFORMATION BE FURNISHED IN WHOLE OR IN PART TO OTHERS EXCEPT IN ACCORDANCE WITH THE TERMS OF ANY AGREEMENT UNDER WHICH IT WAS SUPPLIED OR WITH THE PRIOR WRITTEN CONSENT OF PROCESS SYSTEMS INTERNATIONAL, INC. AND SHALL BE RETURNED UPON REQUEST.</p>	V049-3-603	INSTRUMENT PLAN LOUISIANA RIGHT BEAM MANIFOLD			<p>UNLESS OTHERWISE SPECIFIED DIMENSIONS ARE IN INCHES TOLERANCES: FRACTIONAL: ± ANGULAR ± 1/4° ± 30" BEND ± 2° TWO PLACE DECIMAL ± .005 FINISHED SURFACE RNS BRACK CORNERS TO REMOVE ALL BURRS</p> <p>DO NOT SCALE THIS DRAWING</p> <p>USED ON:</p> <p>NEXT ASS'Y:</p>	<p>0 ISSUE FOR LA DESIGN REVIEW</p> <p>REV 02.24.97 0430</p> <p>CHKD DRWN DATE DCBR</p> <p>ISSUE DESCRIPTION</p>	<p>PROCESS SYSTEMS INTERNATIONAL, INC. 20 WALKUP DR. WESTBOROUGH, MASSACHUSETTS 01581 USA</p>			
	V049-3-602	INSTRUMENT PLAN LOUISIANA LEFT BEAM MANIFOLD					<p>INSTRUMENT PLAN LIGO VACUUM EQUIPMENT LOUISIANA SITE VERTEX SECTION</p>			
	V049-3-008	INSTRUMENT INSTALLATION DETAILS					CAD FILE V0493601	SIZE D	DWG. NO. V049-3-601	REV. 0
	V049-3-003	LOUISIANA OVERALL SITE PLAN					SCALE 3/16" = 1' - 0"	SHEET 1 OF 1		
V049-3-001	GENERAL NOTES & LEGEND	V049-5-040	PIPING PLAN LOUISIANA CORNER STATION							
V049-0-023	P & I D LOUISIANA VERTEX SECTION	V049-5-003	EQUIP. ARRANGEMENT LOUISIANA CORNER STATION							
DWG. NO.	DESCRIPTION	DWG. NO.	DESCRIPTION							

LIGO-D70111-00-V