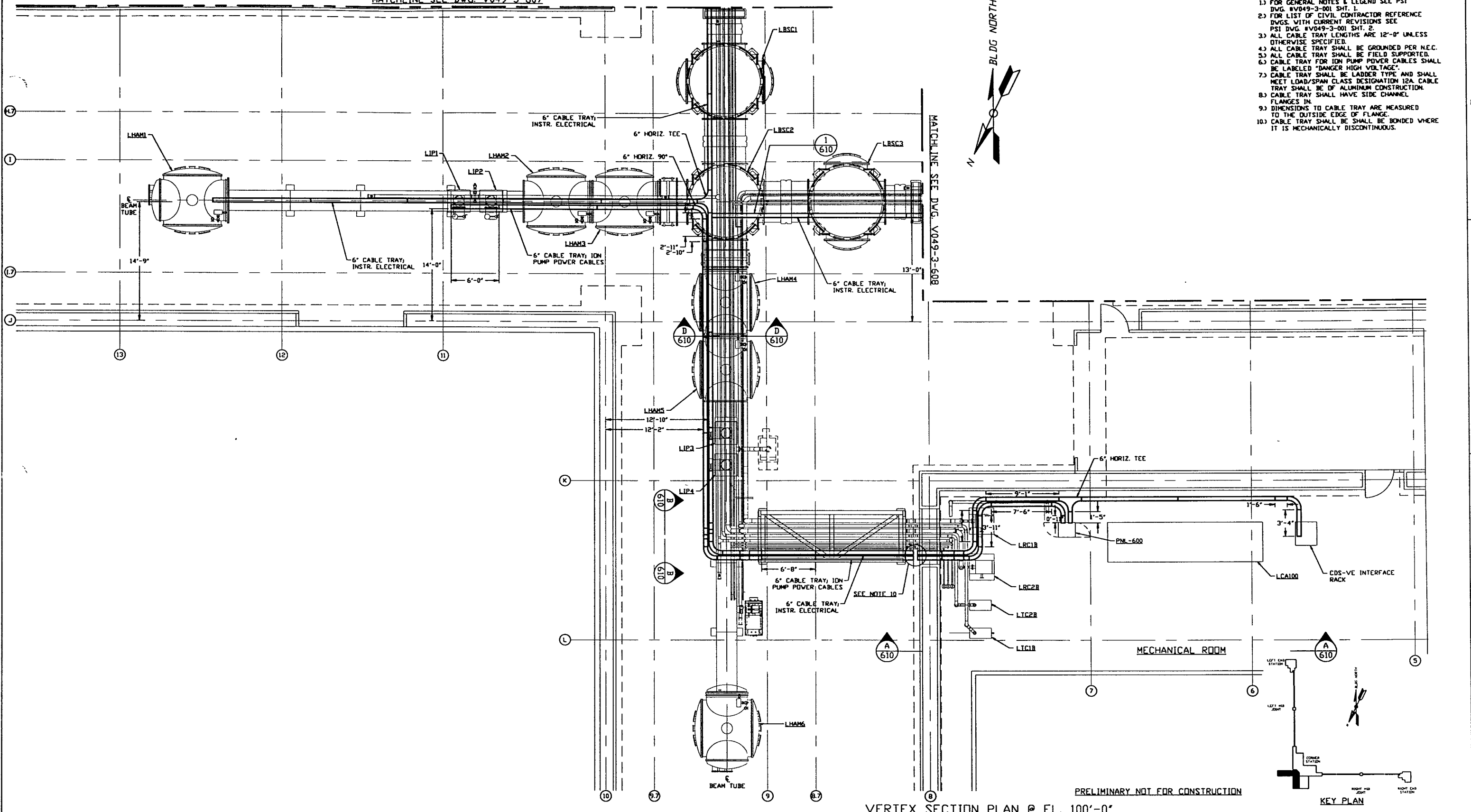
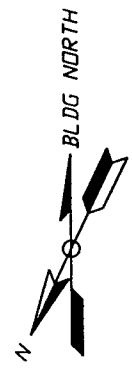


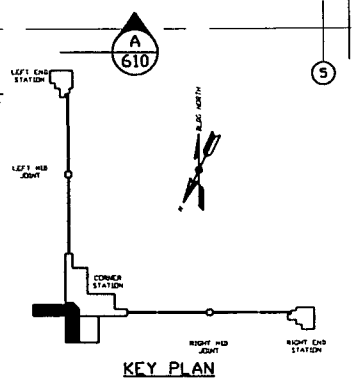
MATCHLINE SEE DWG. V049-3-607

- NOTES:**
- 1) FOR GENERAL NOTES & LEGEND SEE PSI DWG. #V049-3-001 SHT. 1.
 - 2) FOR LIST OF CIVIL CONTRACTOR REFERENCE DWGS. WITH CURRENT REVISIONS SEE PSI DWG. #V049-3-001 SHT. 2.
 - 3) ALL CABLE TRAY LENGTHS ARE 12'-0" UNLESS OTHERWISE SPECIFIED.
 - 4) ALL CABLE TRAY SHALL BE GROUNDED PER N.E.C.
 - 5) ALL CABLE TRAY SHALL BE FIELD SUPPORTED.
 - 6) CABLE TRAY FOR ION PUMP POWER CABLES SHALL BE LABELED "DANGER HIGH VOLTAGE".
 - 7) CABLE TRAY SHALL BE LADDER TYPE AND SHALL MEET LOAD/SPAN CLASS DESIGNATION 12A. CABLE TRAY SHALL BE OF ALUMINUM CONSTRUCTION.
 - 8) CABLE TRAY SHALL HAVE SIDE CHANNEL FLANGES IN.
 - 9) DIMENSIONS TO CABLE TRAY ARE MEASURED TO THE OUTSIDE EDGE OF FLANGE.
 - 10) CABLE TRAY SHALL BE BONDED WHERE IT IS MECHANICALLY DISCONTINUOUS.



VERTEX SECTION PLAN @ EL. 100'-0"

PRELIMINARY NOT FOR CONSTRUCTION



<p>PROPRIETARY AND CONFIDENTIAL</p> <p>THIS DOCUMENT CONTAINS PROPRIETARY INFORMATION BELONGING TO PROCESS SYSTEMS INTERNATIONAL, INC. OR ITS SUBSIDIARIES AND SHALL BE KEPT CONFIDENTIAL FOR THE PURPOSE FOR WHICH IT WAS SUPPLIED. IT SHALL NOT BE REPRODUCED OR OTHERWISE USED, NOR SHALL SUCH INFORMATION BE FURNISHED IN WHOLE OR IN PART TO OTHERS EXCEPT IN ACCORDANCE WITH THE TERMS OF ANY AGREEMENT UNDER WHICH IT WAS SUPPLIED OR WITH THE PRIOR WRITTEN CONSENT OF PROCESS SYSTEMS INTERNATIONAL, INC. AND SHALL BE RETURNED UPON REQUEST.</p>		<p>V049-3-610 CABLE TRAY DETAILS CORNER STATION</p> <p>V049-3-608 CABLE TRAY PLAN LOUISIANA RIGHT BEAM MANIFOLD</p> <p>V049-3-607 CABLE TRAY PLAN LOUISIANA LEFT BEAM MANIFOLD</p> <p>V049-3-003 LOUISIANA OVERALL SITE PLAN</p> <p>V049-3-001 GENERAL NOTES & LEGEND</p>	<p>UNLESS OTHERWISE SPECIFIED DIMENSIONS ARE IN INCHES</p> <p>TOLERANCES:</p> <p>FRACTIONAL & ANGULAR DIMS 1/16" BEH 1/32" TWO PLACE DECIMAL & 30° THREE PLACE DECIMAL & 30S FINISHED SURFACE DIMS BREAK CORNERS IN OUT REMOVE ALL BURRS</p>	<p>DO NOT SCALE THIS DRAWING 0</p> <p>ISSUE FOR LA DESIGN REVIEW</p>	<p>USED ON: [Signature]</p> <p>CHKD: [Signature]</p> <p>DRWN: [Signature]</p> <p>DATE: 02.24.97</p> <p>DCDR: 0430</p>	<p>SCALE: 3/16" = 1' - 0"</p> <p>SHEET: 1 OF 1</p>
<p>8</p>	<p>7</p>	<p>6</p>	<p>5</p>	<p>4</p>	<p>3</p>	<p>2</p>

PROCESS SYSTEMS INTERNATIONAL, INC.
20 WALCUP DR. WESTBOROUGH, MASSACHUSETTS 01581 USA

CABLE TRAY PLAN LIGO VACUUM EQUIPMENT LOUISIANA SITE VERTEX SECTION

CAB FILE: V0493606
SIZE: D
DWG. NO.: V049-3-606
REV: 0

LIGO-D970114-00-V