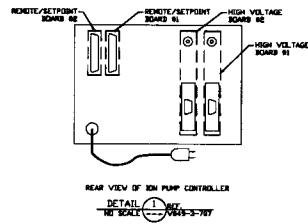
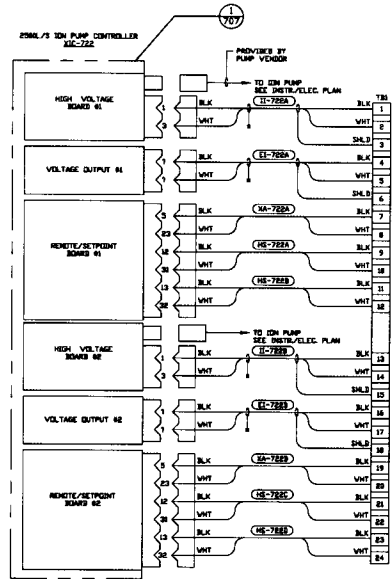


NOTES:
 1) ALL WIRING IS 800 AWG.



PRELIMINARY AND CONFIDENTIAL THIS DOCUMENT CONTAINS PROPRIETARY INFORMATION BELONGING TO PROCESS SYSTEMS INTERNATIONAL, INC. NO PART OF THIS DOCUMENT IS TO BE REPRODUCED, COPIED, OR TRANSMITTED IN ANY FORM OR BY ANY MEANS, ELECTRONIC OR MECHANICAL, INCLUDING PHOTOCOPYING, RECORDING, OR BY ANY INFORMATION STORAGE AND RETRIEVAL SYSTEM, WITHOUT THE WRITTEN PERMISSION OF PROCESS SYSTEMS INTERNATIONAL, INC.	INSTRUMENT ELEC. PLAN LOUISIANA LEFT END STATION V049-3-704		CABLE TRAY PLAN LOUISIANA LEFT END STATION V049-3-705		MASS ENERGISE SERVICES INSTRUMENT AND B. BOXES PROVISIONS FOR PUMP SERVICE, AS SHOWN IN THESE PLANS, SHALL BE THE RESPONSIBILITY OF THE USER. NO NET SCALE THIS DRAWING USED ON:	2 ISSUE FOR AS-BUILT 1 ISSUE FOR CONSTRUCTION 0 ISSUE FOR LA DESIGN REVIEW	L3 02/01/99 0644 FAB S.J.V 04/06/98 0664 S.J.V 08/04/97 0430	PROCESS SYSTEMS INTERNATIONAL, INC. 2000 W. 10TH STREET, SUITE 100 DENVER, CO 80202-1500 TEL: 303.733.1100 FAX: 303.733.1101 WWW: WWW.PSI-USA.COM	PNL-700 WIRING DIAGRAM LIGD VACUUM EQUIPMENT LOUISIANA SITE LEFT END STATION	CHG FILE V049-3-707 SHEET NO. D	REV 2
	REFERENCE DRAWINGS	DESCRIPTION	DATE	BY						1 OF 1	

REVISIONS: 01/15/99 - 01/15/99 - 01/15/99