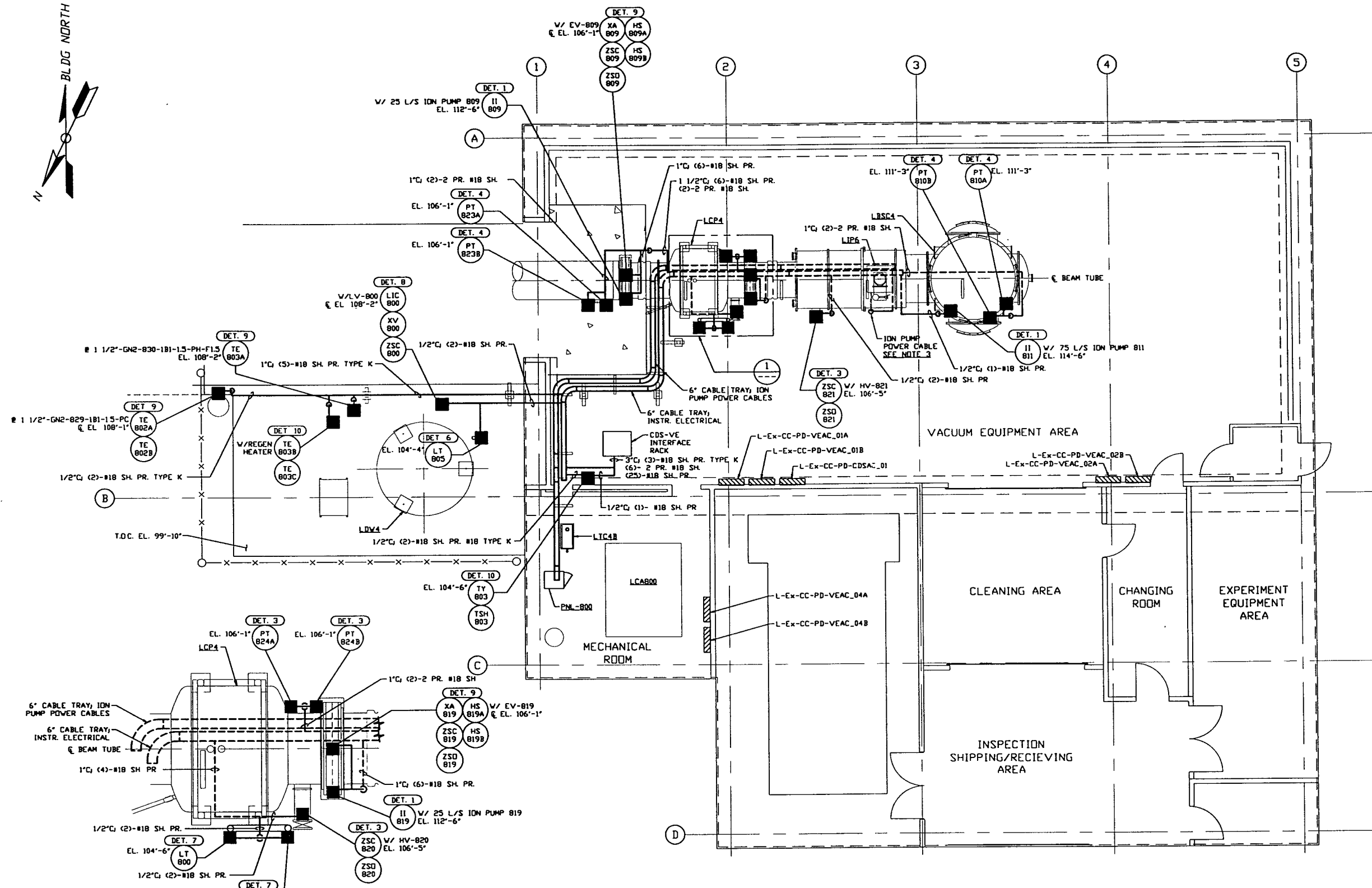


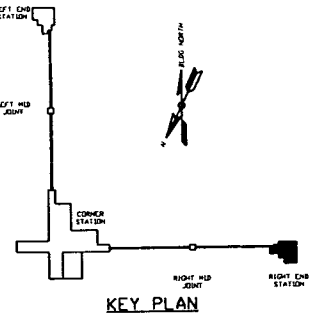
- NOTES:**
- 1) FOR PSI DWG. LIST & LEGEND SEE PSI DWG. #V049-3-001 SHT. 1.
 - 2) FOR LIST OF CIVIL CONTRACTOR REFERENCE DWGS. WITH CURRENT REVISIONS SEE PSI DWG. V049-3-001 SHT. 2.
 - 3) FOR INSTRUMENT ELECTRICAL INSTALLATION DETAILS SEE PSI DWG. #V049-3-007.
 - 4) CONDUIT IS SHOWN DIAGRAMMATICALLY AND SHALL BE FIELD VERIFIED SO AS TO OPTIMIZE SUPPORTING MEANS AND TO AVOID INTERFERENCES WITH PIPING SYSTEMS.
 - 5) ION PUMP POWER CABLES SHALL BE RUN IN 2" CABLE CHANNEL FROM ION PUMP DOWN TO 6" CABLE TRAY LOCATED UNDER BEAM TUBE.
 - 6) AT INDOOR INSTALLATIONS, CONDUIT SHALL BE ENT. AT OUTDOOR LOCATIONS, CONDUIT SHALL BE IMC.



RIGHT END STATION PLAN @ EL. 100'-0"

SCALE: 3/8" = 1' - 0"

PRELIMINARY NOT FOR CONSTRUCTION



LIGO-D970147-00-V

| | | | | | | | | | | | | | | | | | | | | |
|--|-------------------------------------|---|------------|--|---------------------------|--|--|--|--|----------------------------|--|--|--|--|---------------|--|--|--|--|--|
| <p>PROPRIETARY AND CONFIDENTIAL</p> <p>THIS DOCUMENT CONTAINS PROPRIETARY INFORMATION BELONGING TO PROCESS SYSTEMS INTERNATIONAL, INC. OR ITS SUBSIDIARIES AND SHALL BE KEPT CONFIDENTIAL FOR THE PURPOSE OF THE PROJECT. IT SHALL NOT BE COPIED, REPRODUCED OR OTHERWISE USED WITHOUT THE WRITTEN CONSENT OF PROCESS SYSTEMS INTERNATIONAL, INC. AND SHALL BE RETURNED UPON REQUEST.</p> | V049-3-007 | PHL-800 WIRING DIAGRAM | | | | | | | | | | | | | | | | | | |
| | V049-3-001 | INSTRUMENT PLAN LOUISIANA RIGHT END STATION | | | | | | | | | | | | | | | | | | |
| | V049-3-007 | INSTRUMENT ELECTRICAL INSTALLATION DETAILS | | | | | | | | | | | | | | | | | | |
| | V049-3-003 | LOUISIANA OVERALL SITE PLAN | | | | | | | | | | | | | | | | | | |
| | V049-3-001 | GENERAL NOTES & LEGEND | | | | | | | | | | | | | | | | | | |
| V049-0-025 | P & I D LOUISIANA RIGHT END STATION | | V049-5-008 | EQUIP. ARRANGEMENT LOUISIANA RIGHT END STATION | | | | | | | | | | | | | | | | |
| V049-3-808 | CDS INTERFACE DIAGRAM | | | | | | | | | | | | | | | | | | | |
| DWG. NO. | DESCRIPTION | REFERENCE DRAWINGS | DWG. NO. | DESCRIPTION | | | | | | | | | | | | | | | | |
| UNLESS OTHERWISE SPECIFIED DIMENSIONS ARE IN INCHES TOLERANCES: FRACTIONAL & ANGULAR APPROX 1/8" BEND 1/2" TWO PLACE DECIMAL & IN THREE PLACE DECIMAL & .005 FINISHED SURFACE ONE BREAK CORNERS IN OUT REMOVE ALL BURRS | | | | | DO NOT SCALE THIS DRAWING | | | | | ISSUE FOR LA DESIGN REVIEW | | | | | 02.24.97 0430 | | | | | |
| USED ON | | | | | REV | | | | | DESCRIPTION | | | | | CHKD | | | | | |
| NEXT ASS'Y: | | | | | ISSUE DESCRIPTION | | | | | SCALE 3/16" = 1' - 0" | | | | | SHEET 1 OF 1 | | | | | |

PROCESS SYSTEMS INTERNATIONAL, INC.
 20 WALKUP DR. WESTBOROUGH, MASSACHUSETTS 01581 USA

INSTRUMENT ELECTRICAL PLAN
 LIGO VACUUM EQUIPMENT
 LOUISIANA SITE
 RIGHT END STATION

CAD FILE: V0493803
 SIZE: D
 DWG. NO.: V049-3-803
 REV.: 0