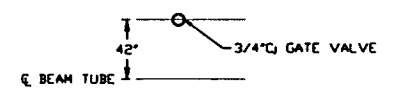
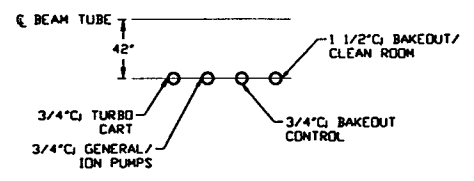


- NOTES:**
- 1.) PROVIDE PULL TAPE IN EACH CONDUIT.
 - 2.) ALL UNDERGROUND INSTALLATION AND DETAILS ARE BY OTHERS.
 - 3.) POWER SOURCE SHALL BE AS FOLLOWS:
 - A) BAKEOUT/CLEAN ROOM 480/277VAC
 - B) GATE VALVE 480/277VAC
 - C) GENERAL/ION PUMPS 120VAC
 - D) BAKEOUT CONTROL 120VAC
 - E) TURBO CART 208/120VAC
 - 4.) FOR EQUIPMENT POWER REQUIREMENTS, REFER TO PSI DOCUMENT #V049-1-047.
 - 5.) FOR GENERAL NOTES & LEGEND SEE PSI DVG. #V049-3-001 SHT. 1.
 - 6.) FOR LIST OF CIVIL CONTRACTOR REFERENCE DWGS. WITH CURRENT REVISIONS SEE PSI DVG. #V049-3-001 SHT. 2.

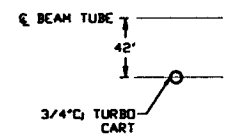
RIGHT END STATION PLAN @ EL. 100'-0"



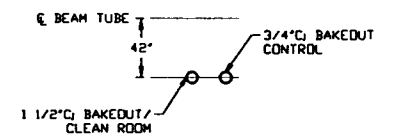
DETAIL 1 REF. THIS SHT. NO SCALE



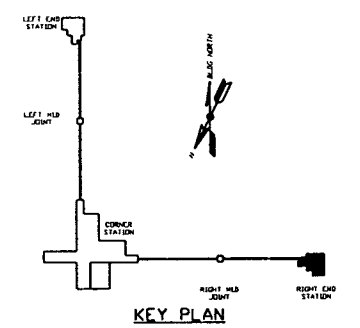
DETAIL 2 REF. THIS SHT. NO SCALE



DETAIL 3 REF. THIS SHT. NO SCALE



DETAIL 4 REF. THIS SHT. NO SCALE



KEY PLAN

L190-D970149-01-V

PROPRIETARY AND CONFIDENTIAL
 THIS DOCUMENT CONTAINS PROPRIETARY INFORMATION BELONGING TO PROCESS SYSTEMS INTERNATIONAL, INC. OR ITS AFFILIATED COMPANIES AND SHALL BE KEPT CONFIDENTIAL FOR THE PURPOSE FOR WHICH IT WAS SUPPLIED. IT SHALL NOT BE COPIED, REPRODUCED OR OTHERWISE USED, NOR SHALL SUCH INFORMATION BE FURNISHED IN WHOLE OR IN PART TO OTHERS EXCEPT IN ACCORDANCE WITH THE TERMS OF ANY AGREEMENT UNDER WHICH IT WAS SUPPLIED OR WITH THE PRIOR WRITTEN CONSENT OF PROCESS SYSTEMS INTERNATIONAL, INC. AND SHALL BE RETURNED UPON REQUEST.

DWG. NO.	DESCRIPTION	DWG. NO.	DESCRIPTION

UNLESS OTHERWISE SPECIFIED DIMENSIONS ARE IN INCHES
 TOLERANCES:
 FRACTIONAL & ANGULAR: 1/16" - 3/16" BEND 1/8"
 TWO PLACE DECIMAL & IN THREE PLACE DECIMAL: 0 AND FINISHED SURFACE DIMS. BREAK CORNERS 90° OUT REMOVE ALL BURRS

DO NOT SCALE THIS DRAWING	USED IN	REV	DESCRIPTION	CHKD	DRWN	DATE	DCDR

PROCESS SYSTEMS INTERNATIONAL, INC.
 20 WALKUP DR. WESTBOROUGH, MASSACHUSETTS 01581 USA

ELECTRICAL CONDUIT STUB-UP PLAN
LIGO VACUUM EQUIPMENT
LOUISIANA SITE
RIGHT END STATION

CAD FILE: V0493805
 SIZE: D
 DWG. NO.: V049-3-805
 REV. 1

SCALE: 3/16" = 1' - 0"
 SHEET: 1 OF 1