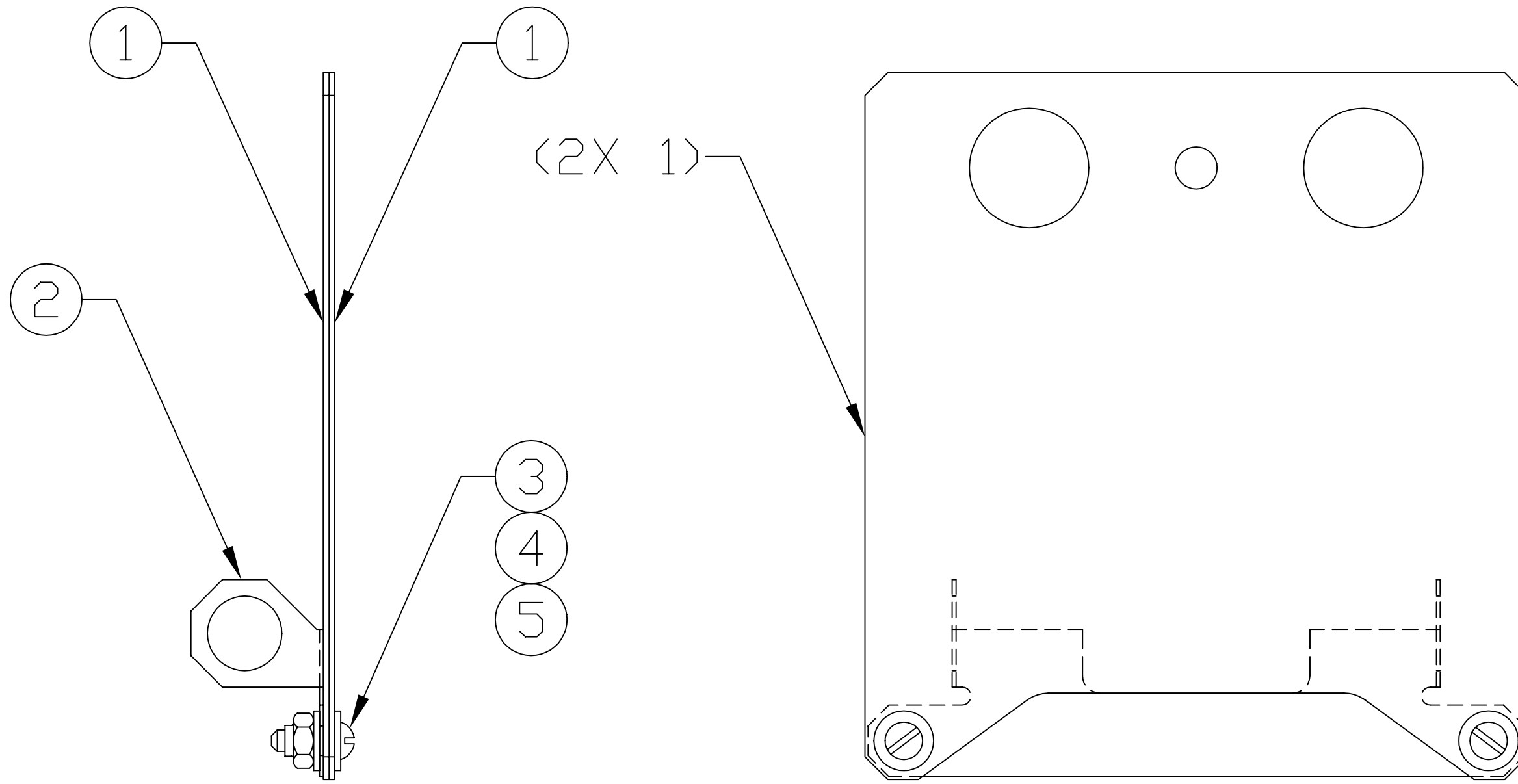


NOTES: (UNLESS OTHERWISE SPECIFIED)  
 ⚠ FOR VENDOR INFORMATION, SEE TOP ASSEMBLY MATERIALS LIST D970006.



REF	QTY	PART or DRWG No.	NOMENCLATURE or DESCRIPTION	MATERIAL
5	2	McM-Carr #91839A005	#4-40 HEX NUT, "FLEXLOC"	stainless steel
4	4	McM-Carr #92141A005	#4 NOM, .13 ID, .31 OD, .032 THK FL WASH	stainless steel
3	2	McM-Carr #91810A108	#4-40 X .38 LG SLOTTED RD HD SCR	stainless steel
2	1	D970167	BRACKET	-
1	2	D970166	PROTECTIVE SHEET	-

PARTS and MATERIAL LIST ⚠

DWG. NO.	DESCRIPTION	MATERIAL	HEAT TREAT	FINISH	REV	DESCRIPTION	DCC	SYS	DET	CDS	VE	CC	BT	DRWN	CHECK	DATE	SCALE	NTS	SHEET	1 OF 1	
	REFERENCE DRAWINGS				B	DCN E970059								CONLEY							
					A	DCN E970007								CONLEY	COYNE	4-29-97					

UNLESS OTHERWISE SPECIFIED  
 DIMENSIONS ARE IN INCHES

TOLERANCES:  
 FRACTIONAL ±  
 ANGULAR ±  
 ANGULAR MACH ± BEND ±  
 TWO PLACE DECIMAL ±

THREE PLACE DECIMAL ±  
 FINISHED SURFACE RMS  
 BREAK CORNERS IN OUT  
 REMOVE ALL BURRS

**LIGO** CALIFORNIA INSTITUTE OF TECHNOLOGY  
 MASSACHUSETTS INSTITUTE OF TECHNOLOGY

LARGE CORE OPTIC COMPONENT  
 CARRIER PROTECTIVE SHEET  
 ASSEMBLY

CAD FILE: D970168-B.dwg  
 SIZE: B  
 DWG. NO.: D970168-B-D

SCALE: NTS  
 SHEET: 1 OF 1