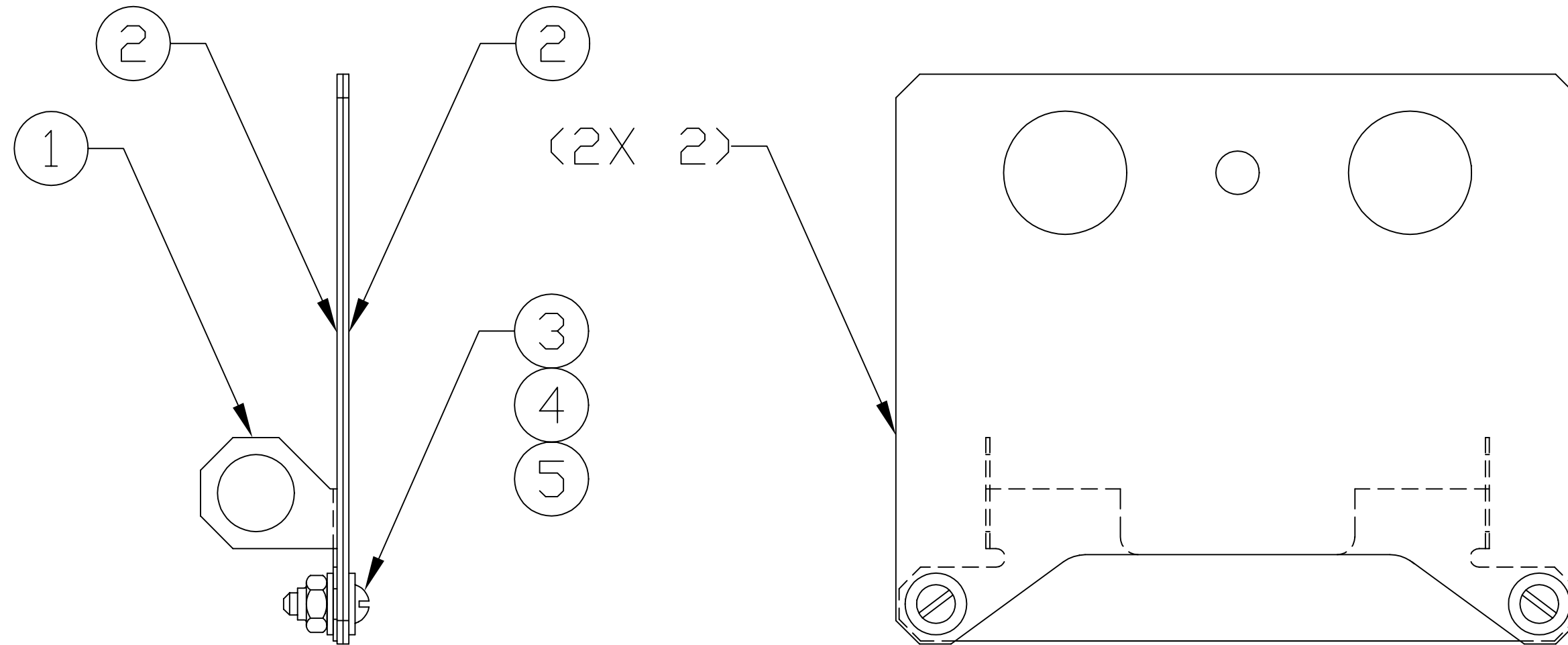


NOTES: (UNLESS OTHERWISE SPECIFIED)
 ⚠ FOR VENDOR INFORMATION, SEE TOP ASSEMBLY MATERIALS LIST D970006.



5	2	McM-Carr #91839A005	#4-40 HEX NUT, "FLEXLOC"	stainless steel
4	4	McM-Carr #92141A005	#4 NOM, .13 ID, .31 OD, .032 THK FL WASH	stainless steel
3	2	McM-Carr #91810A108	#4-40 X .38 LG SLOTTED RD HD SCR	stainless steel
2	2	D970170	PROTECTIVE SHEET	-
1	1	D970166	BRACKET	-
REF	QTY	PART or DRWG No.	NOMENCLATURE or DESCRIPTION	MATERIAL

PARTS and MATERIAL LIST ⚠

DWG. NO.		DESCRIPTION		MATERIAL		HEAT TREAT		FINISH		REV	DESCRIPTION	DRWN	DATE	CHECK	DATE	CAD FILE	SIZE	DWG. NO.	SHEET
										A	DCN E970007-00	CDNLEY	4-29-97	CDYNE	4-29-97	D970171-C.dwg	B	D970171-C-D	1 OF 1
REFERENCE DRAWINGS		USED ON:		NEXT ASS'Y: D961461		ISSUE DESCRIPTION													

UNLESS OTHERWISE SPECIFIED
 DIMENSIONS ARE IN INCHES

TOLERANCES:
 FRACTIONAL ±
 ANGULAR ±
 ANGULAR MACH ± BEND ±
 TWO PLACE DECIMAL ±

THREE PLACE DECIMAL ±
 FINISHED SURFACE RMS
 BREAK CORNERS IN/OUT
 REMOVE ALL BURRS

LIGO CALIFORNIA INSTITUTE OF TECHNOLOGY
 MASSACHUSETTS INSTITUTE OF TECHNOLOGY

BEAM SPLITTER OPTIC CARRIER
 PROTECTIVE SHEET ASSEMBLY

SCALE: NTS
 SHEET: 1 OF 1