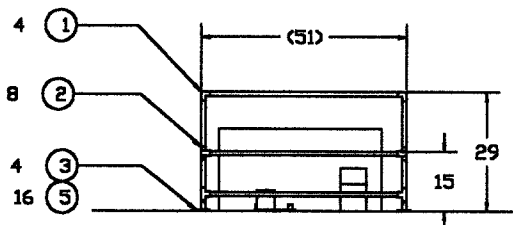


F/N	QTY	Part Number	Description
6	REF	D970286-A-H-1	PEM Stay Clear Floor Mount Location
5	16	9E405A190	Flat head, preassembled bolt anchor
4	8	4699T15	1" Non Pipe Al, 10' lengths
3	4	4698T2	Rectangular Floor Flange
2	8	4698T37	90 degree Side Outlet Tee
1	4	4698T12	Side Outlet Elbo



PEM Stay Clear Zone, WA Corner Station

NOTES:

1. Dimensions are in inches. Tolerance is +/- 1 inch
2. Part Numbers are taken from McMaster Carr supply company
3. See drawing D970285-A-H-1 for floor mount locations

TOLERANCES: FRACTIONAL ± ANGULAR ± TWO PLACE DECIMAL ± THREE PLACE DECIMAL ± .001		FINISHED SURFACE RISE BREAK CORNERS IN CUT REMOVE ALL BURRS		CALIFORNIA INSTITUTE OF TECHNOLOGY MASSACHUSETTS INSTITUTE OF TECHNOLOGY	
A RELEASE 200 00000-00-11		FILE 4-18-96		PEM Stay Clear Zone Corner Station	
B PRE-RELEASE		FILE 12-7-97		D970287-A-H	
DATE:	DESCRIPTION:	SEC:	SYS:	SET:	CDR:
CHECK BY:	CHECK DATE:	CHECK BY:	CHECK DATE:	CHECK BY:	CHECK DATE: