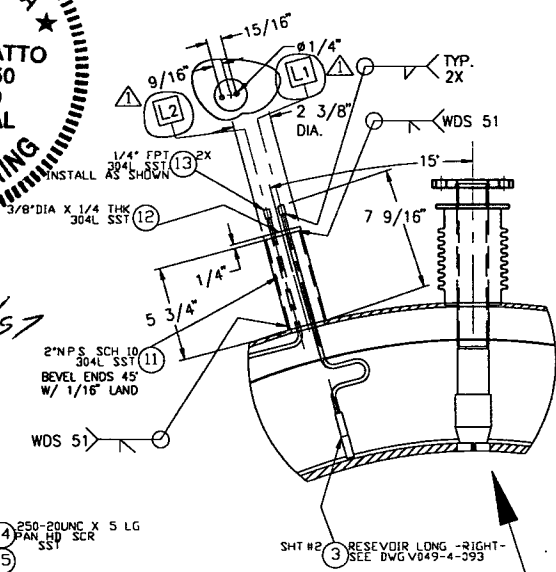
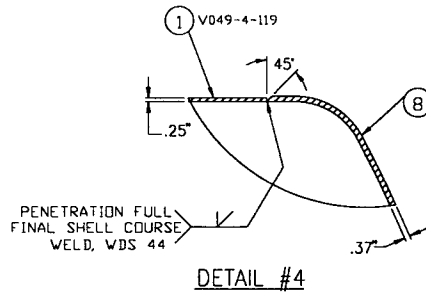


NOZZLE SCHEDULE					
MARK	QTY	SIZE	RATING	TYPE	DESCRIPTION
A	2	44.63" I.D.	SEE NOTE #1 & #2		LASER BEAM / ACCESS
B	1	10" OD TUBE	12" OD CONFLAT W/BLIND FLANGE		PUMPOUT PORT
C	1	1 1/2" X 2"	VAC. JACKET W/ BAYONET BLIND		LN2 INLET
E	1	2" O.D. PIPE	1 1/2" ASA FLG. 5" OD		GN2 VENT
F	1	1 1/2" PIPE	1 1/2" ASA FLG. 5" OD		REGEN-GN2
I	1	1 1/2" OD. TUBE	2 3/4" OD. CONFLAT W/BLIND FLANGE		VACUUM GAUGE PAIR
J	1	1 1/2" OD. TUBE	2 3/4" OD. CONFLAT W/BLIND FLANGE		PURGE AIR
H	1	2 1/2" OD. TUBE	4 1/2" OD. CONFLAT W/BLIND FLANGE		RUPTURE DISC.
K	2	3/4" OD TUBE	2 3/4" OD CONFLAT		FLANGE ANNULUS PUMPOUT PORT

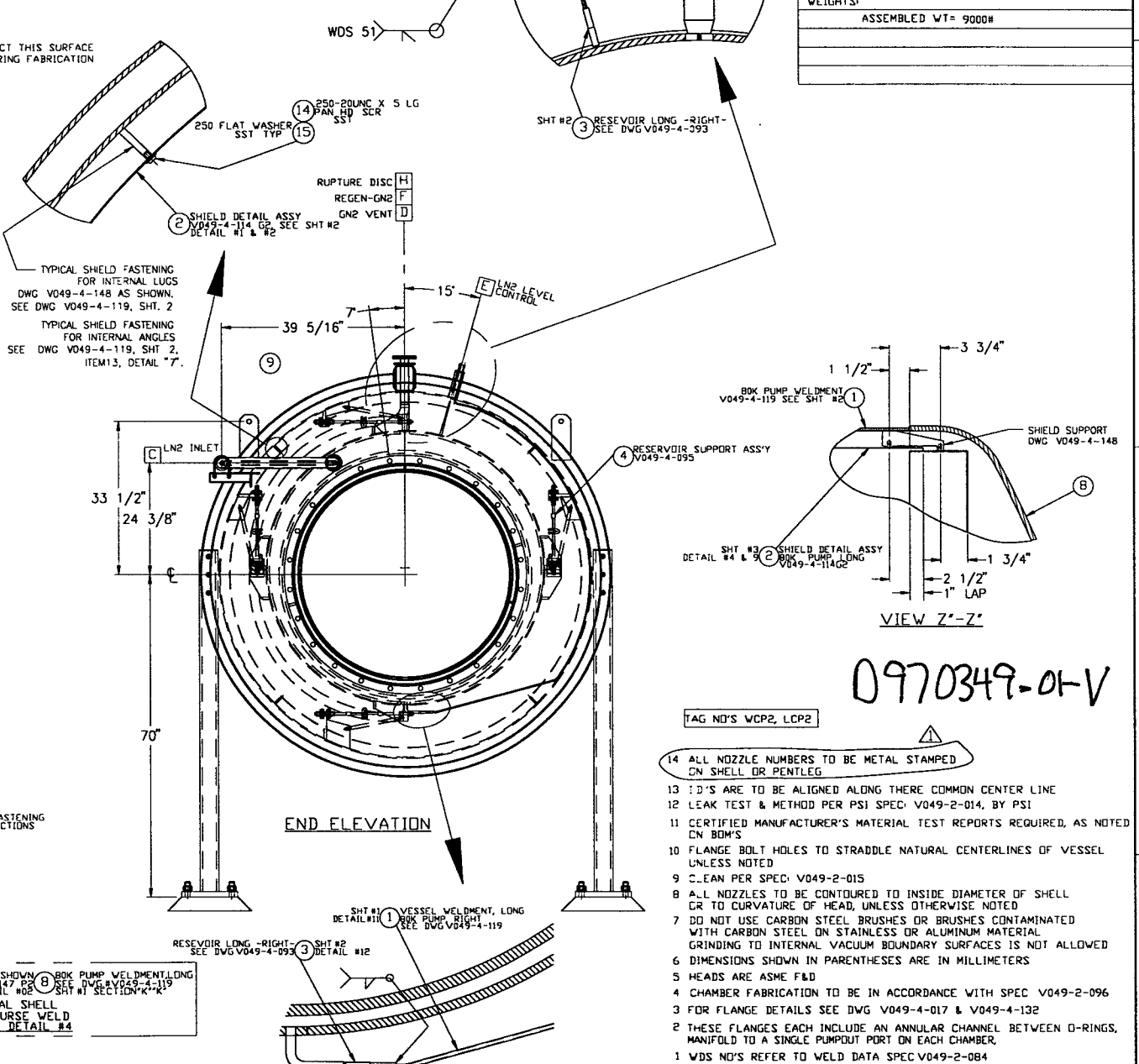
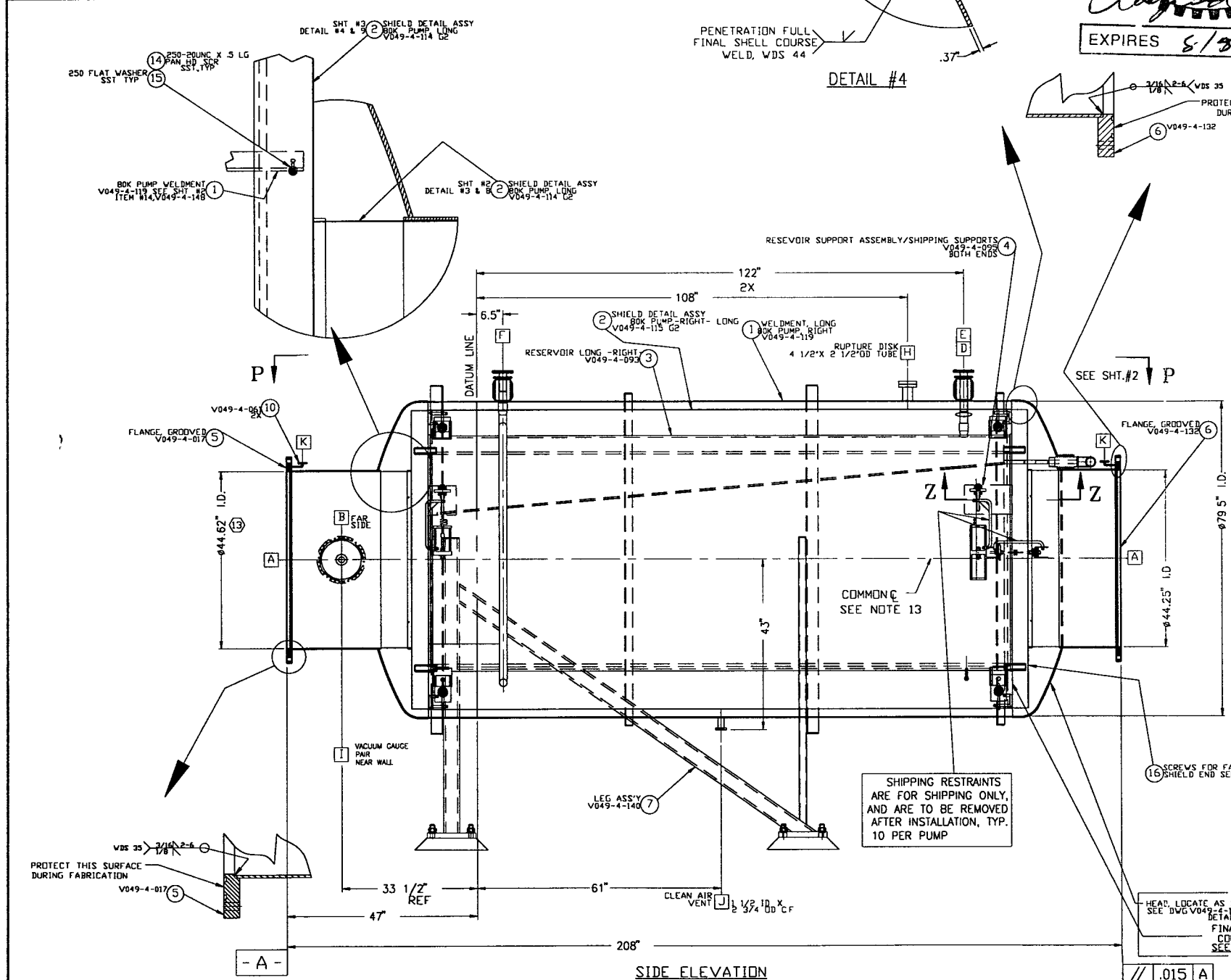
MARK	QTY.	SIZE	TYPE	DESCRIPTION
L1	1	1/4"	FPT	LN ₂ LEVEL CONTROL
L2	1	1/4"	FPT	LN ₂ LEVEL CONTROL



EXPIRES 8/5/97



DESIGN DATA	
CORROSION ALLOWANCE	0
POSTWELD HEAT TREATMENT	MBS
FIREPROOFING	NA
RADIOGRAPHING	NONE
MATERIALS	
HEADS	SA 240-304L
SHELL	SA 240-304, 304L
FLANGES	SA 182 GRADE F, 304L
PIPE NECKS	SA 312-304L, SA 240-304L
REINFORCING	SA 240-304L
BOLTS & NUTS	SA 193-B7
WEIGHTS	
ASSEMBLED WT	9000#



0970349-01-V

- TAG NO'S WCP2, LCP2
- ALL NOZZLE NUMBERS TO BE METAL STAMPED ON SHELL OR PENTLEG
 - D'S ARE TO BE ALIGNED ALONG THEIR COMMON CENTER LINE
 - LEAK TEST & METHOD PER PSI SPEC: V049-2-014, BY PSI
 - CERTIFIED MANUFACTURER'S MATERIAL TEST REPORTS REQUIRED, AS NOTED ON BOM'S
 - FLANGE BOLT HOLES TO STRADDE NATURAL CENTERLINES OF VESSEL UNLESS NOTED
 - CLEAN PER SPEC: V049-2-015
 - ALL NOZZLES TO BE CONTOURED TO INSIDE DIAMETER OF SHELL OR TO CURVATURE OF HEAD, UNLESS OTHERWISE NOTED
 - DO NOT USE CARBON STEEL BRUSHES OR BRUSHES CONTAMINATED WITH CARBON STEEL ON STAINLESS OR ALUMINUM MATERIAL GRINDING TO INTERNAL VACUUM BOUNDARY SURFACES IS NOT ALLOWED
 - DIMENSIONS SHOWN IN PARENTHESES ARE IN MILLIMETERS
 - HEADS ARE ASME F&D
 - CHAMBER FABRICATION TO BE IN ACCORDANCE WITH SPEC V049-2-096
 - FOR FLANGE DETAILS SEE DWG V049-4-017 & V049-4-132
 - THESE FLANGES EACH INCLUDE AN ANNULAR CHANNEL BETWEEN O-RINGS, MANIFOLD TO A SINGLE PUMPOUT PORT ON EACH CHAMBER.
 - WDS NO'S REFER TO WELD DATA SPEC V049-2-084

SYMBOL	CHARACTERISTIC	UNLESS OTHERWISE SPECIFIED DIMENSIONS ARE IN INCHES
□	FLATNESS	TOLERANCES: FRACTIONAL ± .1, ANGULAR ± 1°, TWO PLACE DECIMAL ± .03, THREE PLACE DECIMAL ± .015, FINISHED SURFACE RYS 6.3, BREAK CORNERS IN OUT REMOVE ALL BURRS
○	CYLINDRICITY	
∥	PARALLELISM	
⊥	PERPENDICULARITY	
∠	ANGULARITY	DO NOT SCALE THIS DRAWING
⊕	TRUE POSITION	USED ON:
⊙	CONCENTRICITY	NEXT ASSY:

PROCESS SYSTEMS INTERNATIONAL INC.
20 WALKUP DR. WESTBOROUGH, MASSACHUSETTS 01581 USA

80K PUMP GENERAL ARRG-LONG-RIGHT

LIGD VACUUM EQUIPMENT

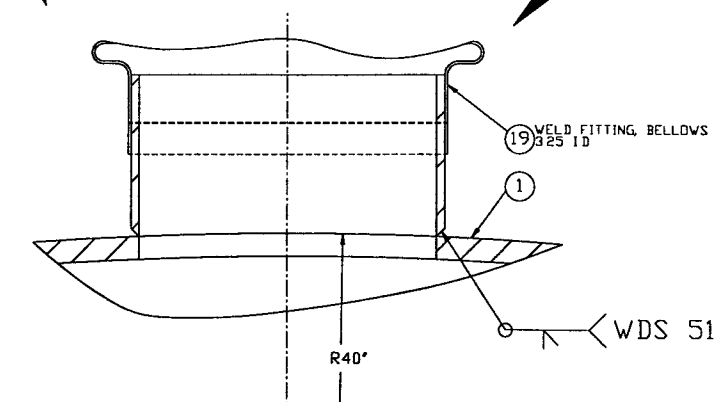
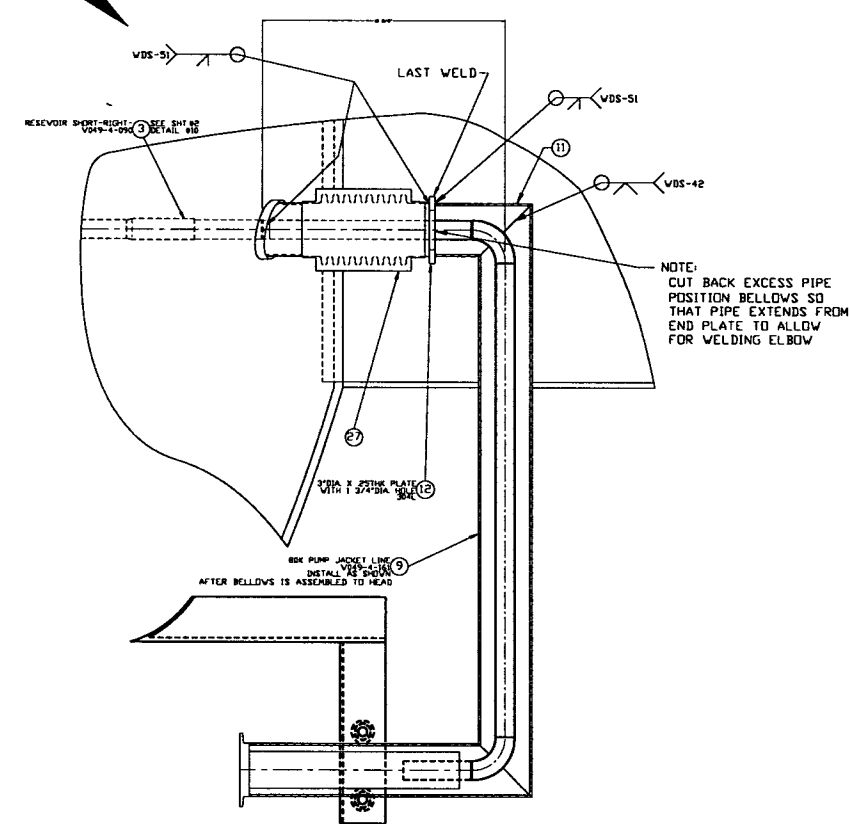
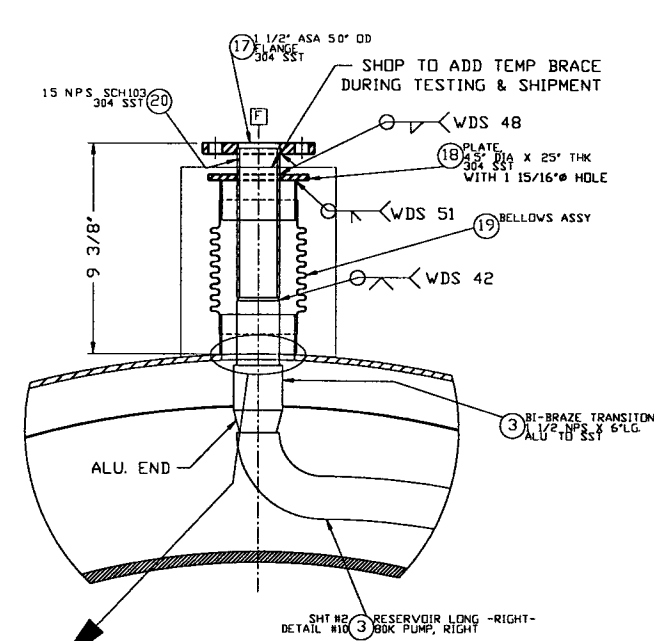
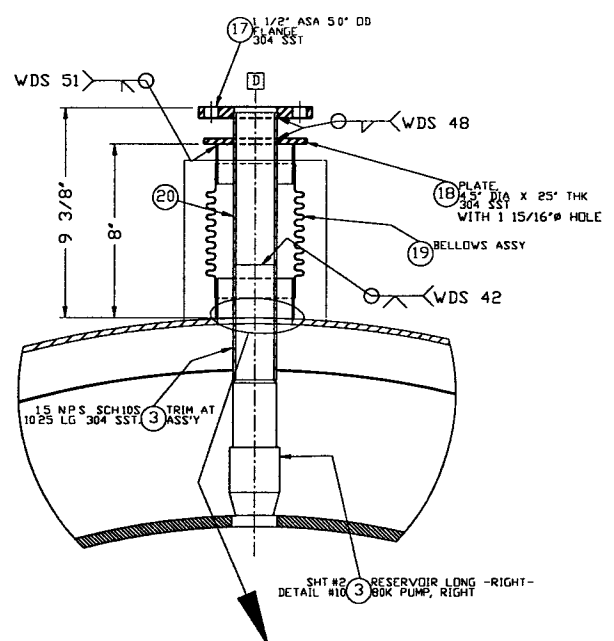
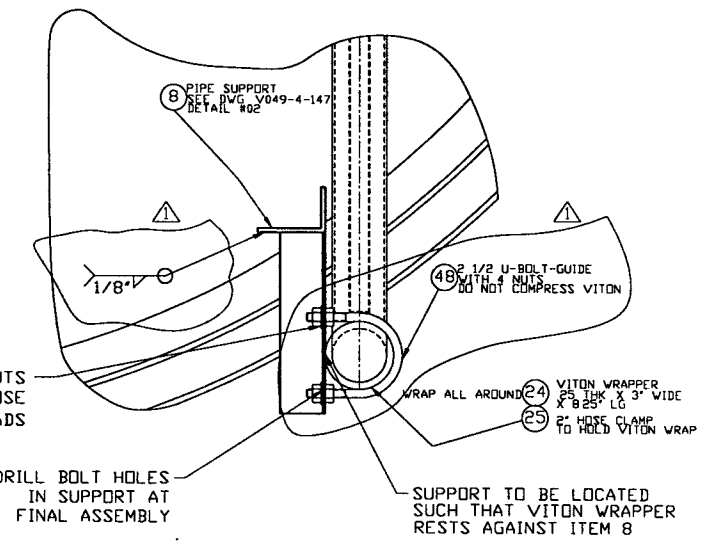
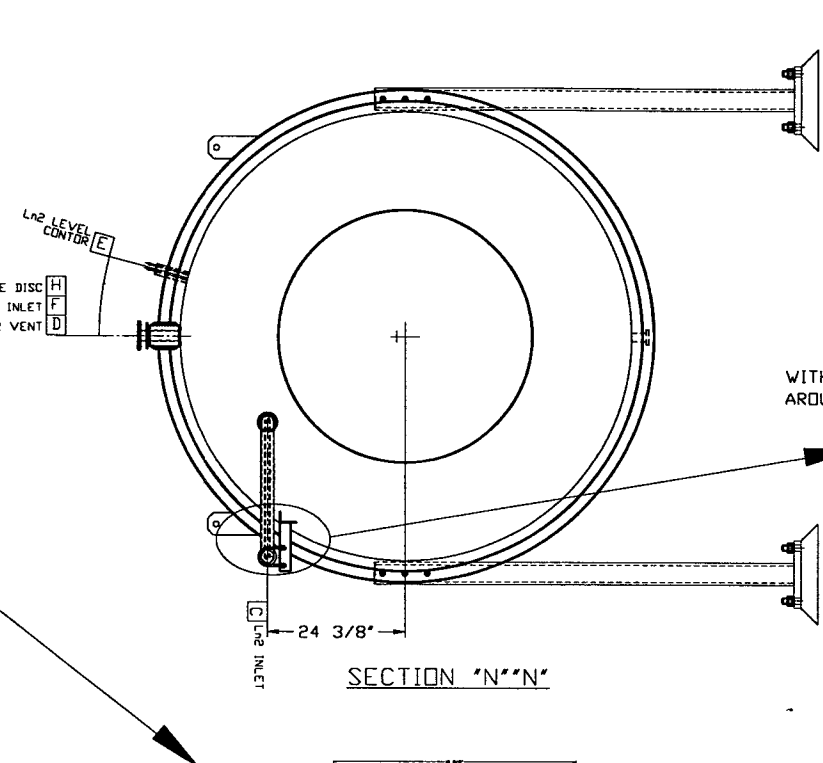
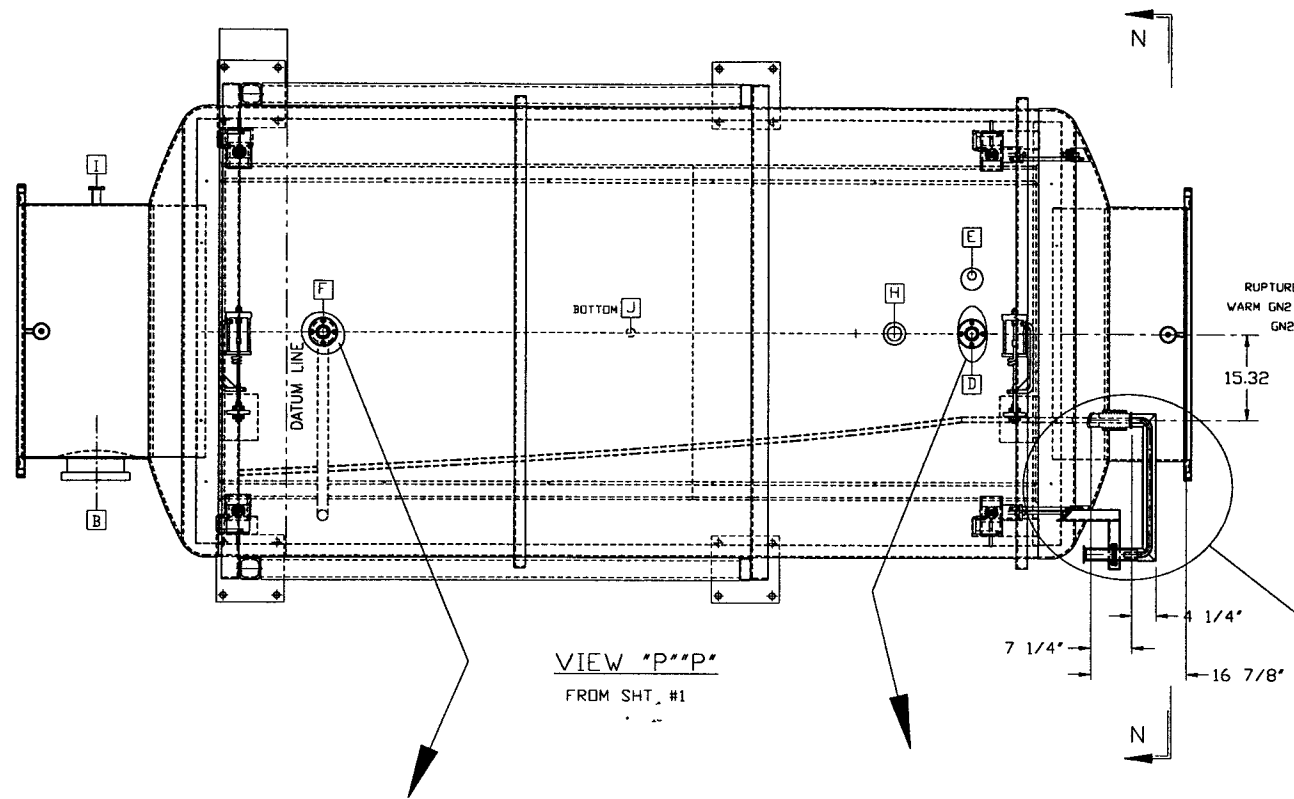
SCALE: NONE SHEET: 1 OF 2

REV 1 DATE 12/31/96

CHKD: DMW/PEF, GS, RDC/REC, PV, TOV

DATE: 1/15/97

DEC# 0400, 0346



RAYMOND D. CIATTO
STATE OF WASHINGTON
REGISTERED ENGINEER
15714

STATE OF LOUISIANA
RAYMOND D. CIATTO
REG. No. 26750
REGISTERED PROFESSIONAL ENGINEER
IN CIVIL ENGINEERING

EXPIRES 8/5/97

11/24/97

SEE SHEET 1 FOR REVISIONS

PROCESS SYSTEMS INTERNATIONAL INC. 20 WALKUP DR. WESTBOROUGH, MASSACHUSETTS 01581 USA				
80K PUMP GENERAL ARR'G-LONG-RIGHT				
LIGD VACUUM EQUIPMENT				
CAD FILE 494006S2	SIZE D	DWG NO. V049-4-006	REV 1	
SCALE NONE	SHEET 2	OF 2		