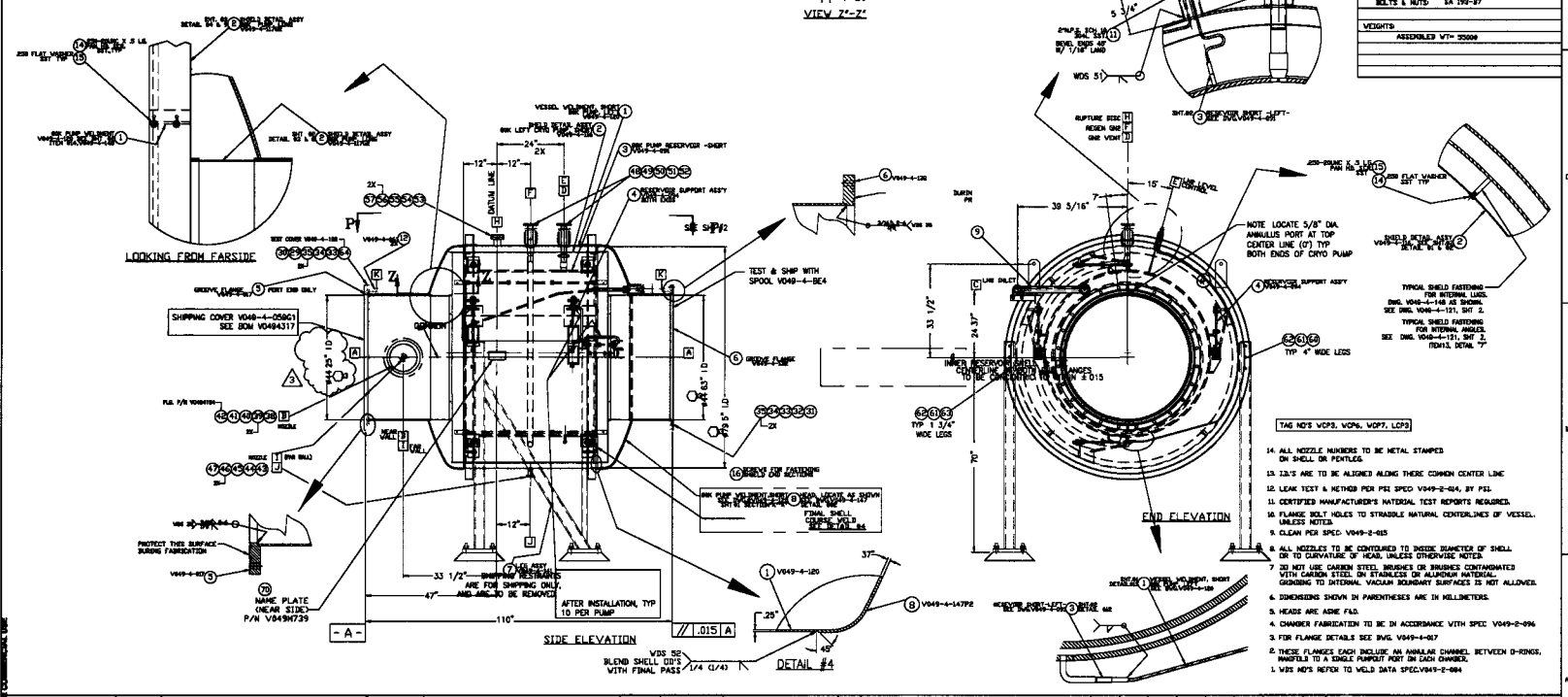


NOZZLE SCHEDULE				
MARK	QTY	SIZE	TYPE	DESCRIPTION
A	2	4483 LR	1/2" DIA. STAINLESS	LASER BEAM / ACCESS
B	1	1070 TIME	1/2" DIA. STAINLESS	PUMPOUT PORT
C	1	1/2" 3 F	1/2" DIA. STAINLESS	LN2 INLET
E	1	1" OD PIPE	1/2" DIA. STAINLESS	GN2 VENT
F	1	1 1/2" DIA. PIPE	1/2" DIA. STAINLESS	SEE L1 & L2
G	1	1 1/2" DIA. PIPE	1/2" DIA. STAINLESS	REGEN GN2
I	1	1 1/2" DIA. PIPE	1/2" DIA. STAINLESS	VACUUM GAUGE PAIR
J	1	1 1/2" DIA. PIPE	1/2" DIA. STAINLESS	PURGE AIR
H	1	2 1/2" DIA. PIPE	1/2" DIA. STAINLESS	RUPTURE DISC.
K	2	3/4" OD TUBE	1/2" DIA. STAINLESS	FLANGE ANNULUS PUMPOUT PORT

DESIGN DATA	
CONSTRUCTION ALLOWANCES	3
POSTWELD HEAT TREATMENT	MB3
FIBROSCOPING	NA
RADIOGRAPHING	NONE
MATERIALS	
HEADS	SA 240-204L
SHELLS	SA 240-204L 304L
FLANGES	SA 182 GRADE F, 304L
PIPE WELDS	SA 240-204L SA 240-304L
REINFORCING	SA 240-204L
BOLTS & NUTS	SA 192-87
WEIGHTS	
ASSEMBLED WT*	32000



SYMBOL	CHARACTERISTIC	WALSH GENESEE SPECIFIER
[Symbol]	FLANGES	WALSH GENESEE SPECIFIER
[Symbol]	CYLINDRICITY	WALSH GENESEE SPECIFIER
[Symbol]	PARALLELISM	WALSH GENESEE SPECIFIER
[Symbol]	PERPENDICULARITY	WALSH GENESEE SPECIFIER
[Symbol]	ANGULARITY	WALSH GENESEE SPECIFIER
[Symbol]	TRUE POSITION	WALSH GENESEE SPECIFIER
[Symbol]	CONCENTRICITY	WALSH GENESEE SPECIFIER

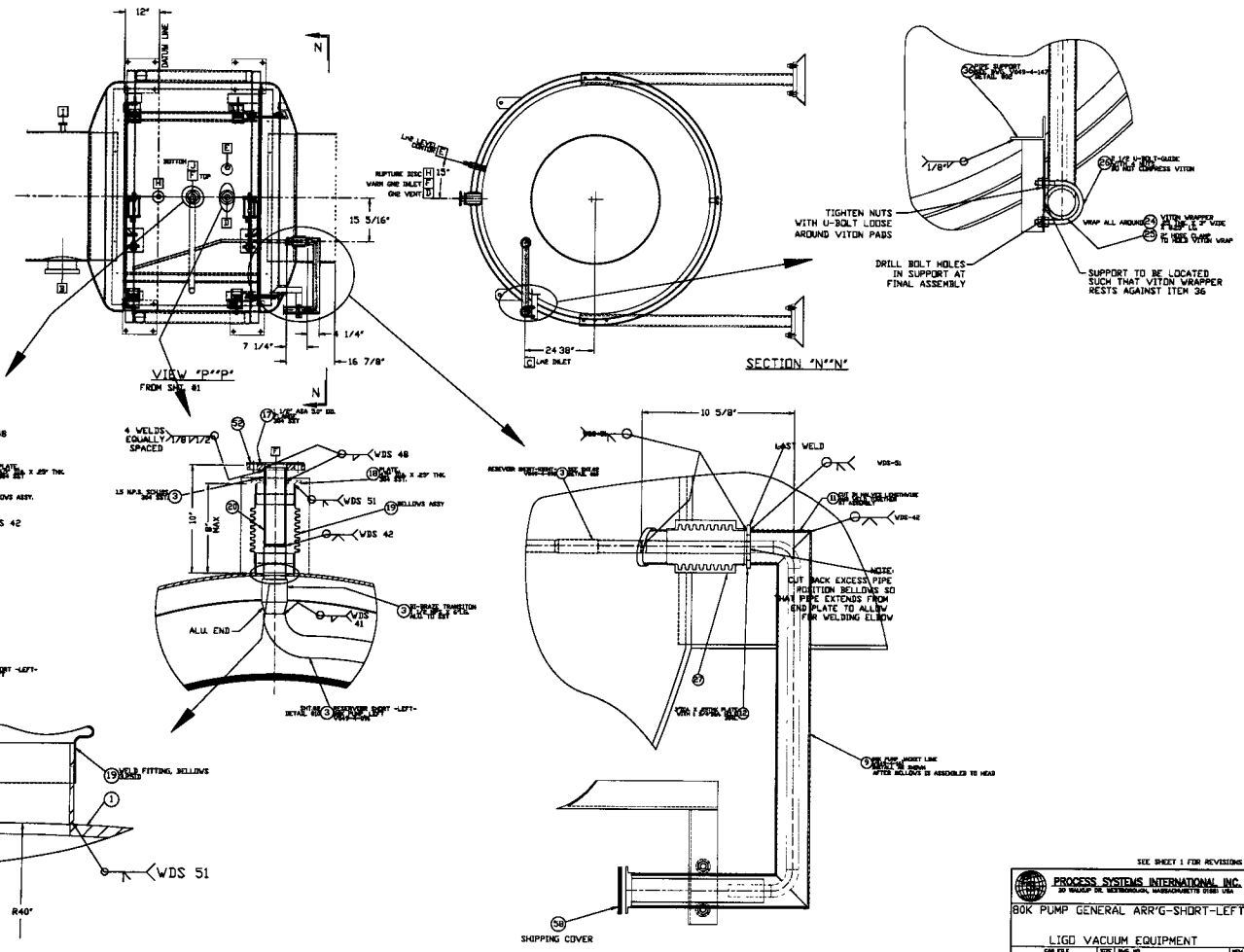
REV	DESCRIPTION	ISSUE DESCRIPTION
3	REVISED FOR FABRICATION AS NOTED	
2	REVISED FOR FABRICATION AS NOTED	
1	REVISED FOR FABRICATION	
0	ISSUED FOR FABRICATION	

PROCESS SYSTEMS INTERNATIONAL INC.
 20 WALSH DR. WILMINGTON, MASSACHUSETTS 01897 USA

80K PUMP GENERAL ARR'G - SHORT-LEFT

LIGO VACUUM EQUIPMENT

CAD FILE: V494-4-007
 4/26/97
 SHEET 1 OF 2



SEE SHEET 1 FOR REVISIONS

PROCESS SYSTEMS INTERNATIONAL, INC.
 25 WALKER ST., BOSTON, MASSACHUSETTS 02108

80K PUMP GENERAL ARR'G-SHORT-LEFT

LIGO VACUUM EQUIPMENT

DWG FILE	REV. NO.	REV. DATE	REV. BY
49408728	3	V049-4-007	3
DATE	REVISED	BY	DATE
			2 12 82

SHEET 2 OF 2