

ELEVATION K
V049-5-040, SHT 1

PROPRIETARY AND CONFIDENTIAL
THIS DOCUMENT CONTAINS PROPRIETARY INFORMATION RELAYING TO PROCESS SYSTEMS INTERNATIONAL, INC. OR ITS AFFILIATED COMPANIES AND SHALL BE USED ONLY FOR THE PURPOSES FOR WHICH IT WAS CREATED. IT SHALL NOT BE COPIED, REPRODUCED, OR DISCLOSED TO OTHERS WITHOUT THE WRITTEN CONSENT OF PROCESS SYSTEMS INTERNATIONAL, INC. AND SHALL BE RETURNED UPON REQUEST.

SYMBOL	DESCRIPTION	SYMBOL	DESCRIPTION
V049-5-040	PIPING ARRANGEMENT PLAN CORNER STATION		
V049-5-041	EQUIPMENT ARRANGEMENT CORNER STATION		
L1001	LIGO VACUUM EQUIPMENT CORNER STATION		

UNLESS OTHERWISE SPECIFIED DIMENSIONS ARE IN INCHES
TOLERANCES
FRACTIONS
DECIMALS
THREE PLACE DECIMALS
FRACTIONS
ROUND UP
DO NOT SCALE THIS DRAWING
USED ON
NEXT ASS'Y

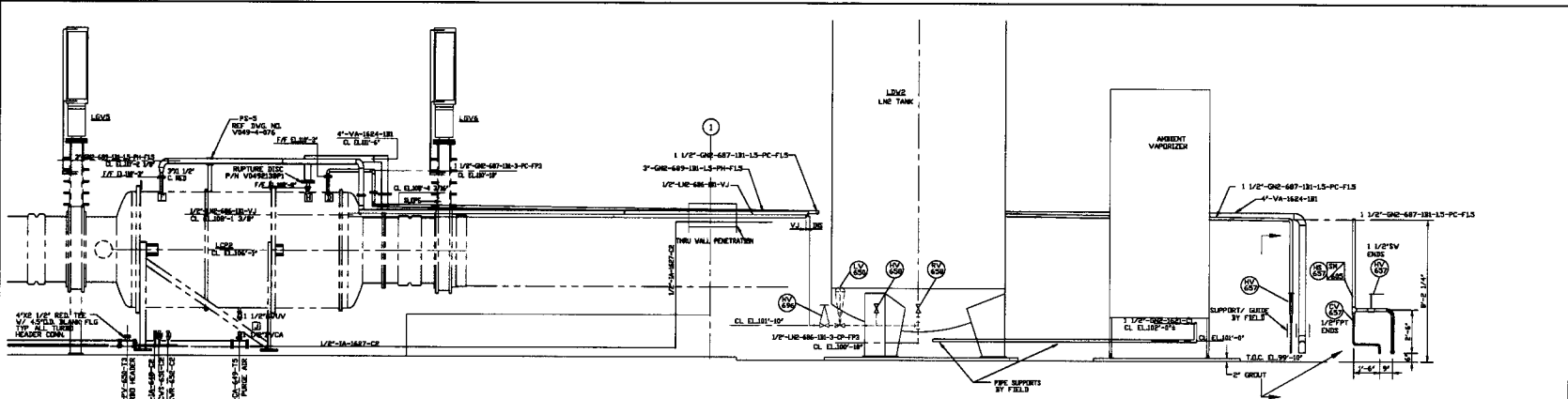
REV	DESCRIPTION	ISSUE DESCRIPTION
2	AS BUILT	CS 51/08/99 0640
1	ISSUED FOR CONSTRUCTION	RDC REC DA 05/02/98 0377
0	ISSUED FOR FIRM	SH DNV RDC REC RM 11/27 0406

PROCESS SYSTEMS INTERNATIONAL, INC. 25 WILSON BL. HOUSTON, TEXAS 77058-1178 USA	
PIPING ARRANGEMENT ELEVATIONS CORNER STATION LOUISIANA LIGO VACUUM EQUIPMENT	
DWG FILE: V0495041/041131 SHEET NO: 1 TOTAL SHEETS: 2	REV: 2 SHEET: 1 OF 2

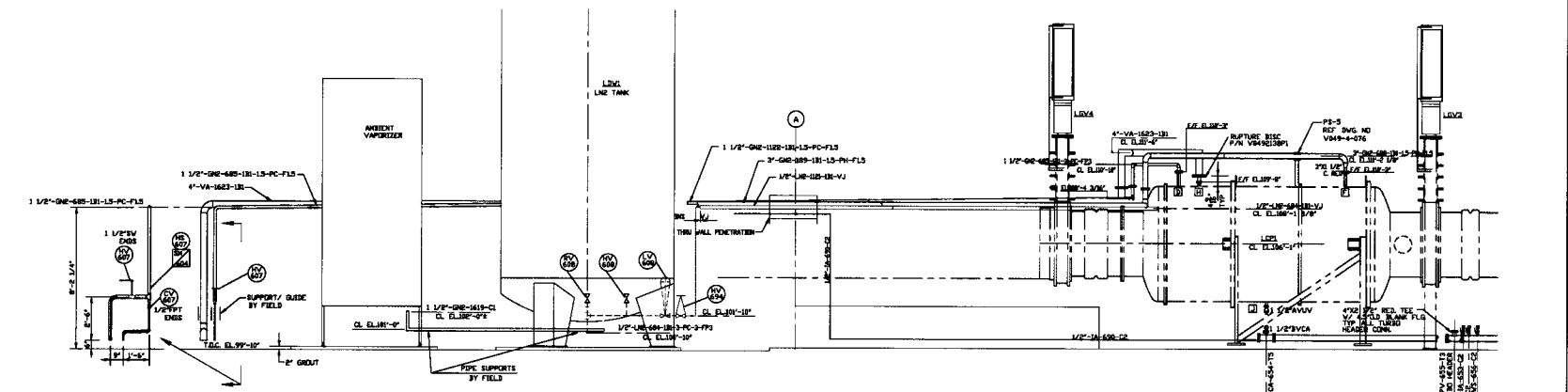
LIGO-D970392-02-V

REPRODUCTION PROHIBITED - NOT FOR COMMERCIAL USE

Feb 04, 1999 - 15:28:53



ELEVATION A (RIGHT ARM)
V049-5-040, SHT 3



ELEVATION P (LEFT ARM)
V049-5-040, SHT 4

PROCESS SYSTEMS INTERNATIONAL INC. 20 MILKUP DR. WESTBOROUGH, MASSACHUSETTS 01581 USA			
PIPING ARRANGEMENT ELEVATIONS CORNER STATION LOUISIANA LIGO VACUUM EQUIPMENT			
JOB FILE V049-5-040/152	SHEET D	DRAWING NO. V049-5-041	NO. 2 OF 2

ELEVATION NUMBER - NOT FOR COMMERCIAL USE

May 15, 1988 - 093713